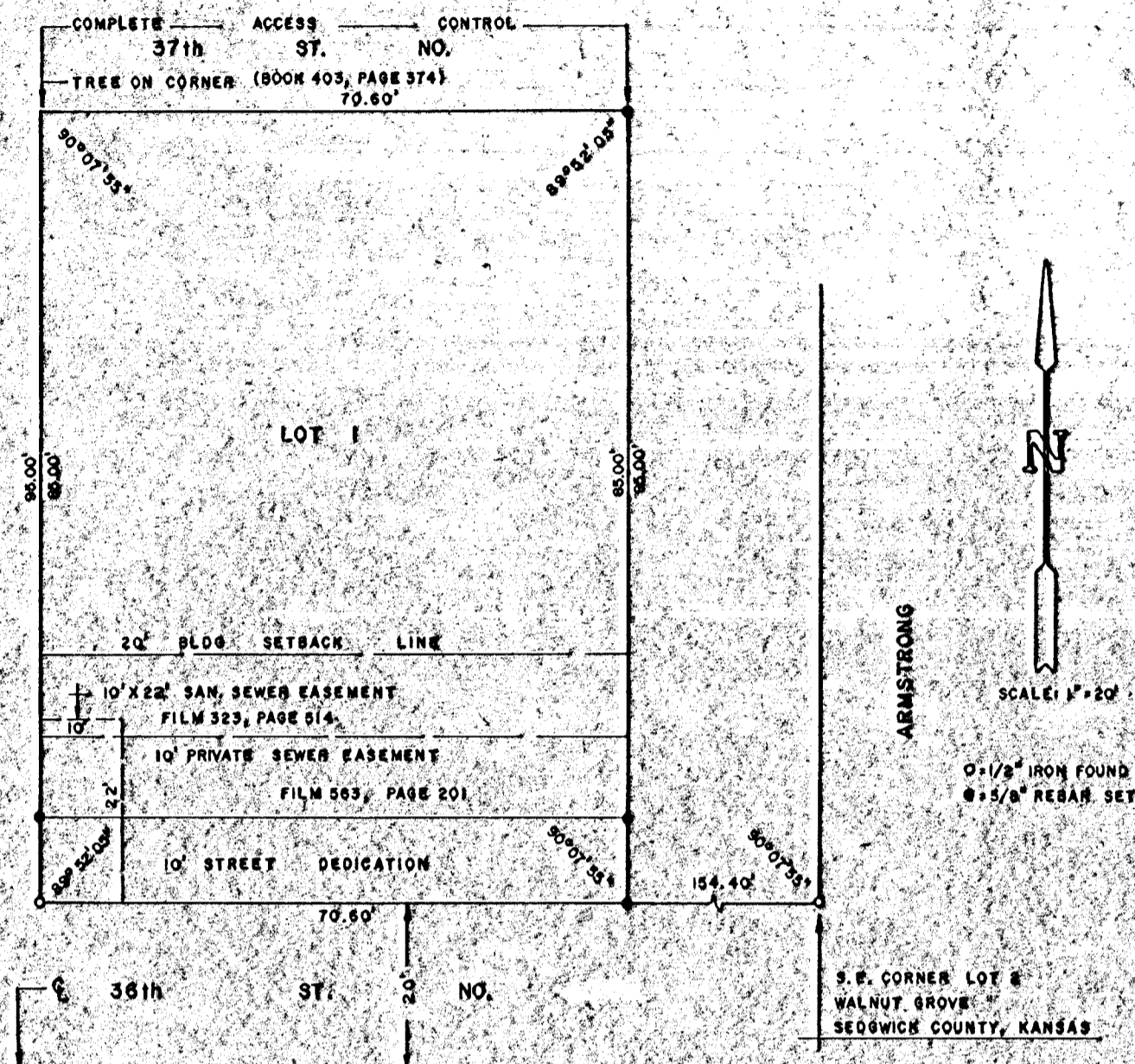


COLGAN ADDITION

WICHITA, SEDGWICK COUNTY, KANSAS



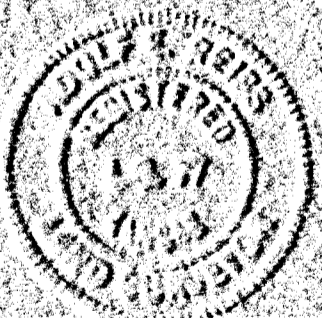
LEGAL DESCRIPTION:

The West 70.60 feet of the East 225.00 feet of the South 95.00 feet of Lot 2, Walnut Grove, Sedgwick County, Kansas, being located in the Southwest Quarter of Section 29, Township 26 South, Range 1 East of the Sixth Principal Meridian.

STATE OF KANSAS)
COUNTY OF SEDGWICK) SS

I, Adolf E. Reiss, a licensed land surveyor in the aforesaid County and State, do hereby certify that I have caused the tract of land as set forth in the Legal Description to be surveyed and platted and that said survey and the accompanying exhibit are true and correct to the best of my knowledge and information available.

Adolf E. Reiss LS#777
Date 2/8/83



Know all men by these presents that we, C.E. Colgan and Juanita W. Colgan, husband and wife, have caused the tract of land as set forth in the Legal Description to be surveyed and platted into one lot and a street to be known as "COLGAN ADDITION" Wichita, Sedgwick County, Kansas. Utility easements, if any, are for the construction and maintenance of all public utilities. The street is hereby dedicated to and for the use of the public. All abutter's rights of access to 37th Street North over and across the North line of Lot 1 are hereby granted to the appropriate governing body.

C. E. Colgan
C.E. Colgan

Juanita W. Colgan
Juanita W. Colgan

STATE OF KANSAS)
COUNTY OF SEDGWICK) SS

Be it remembered that on this 11th day of February, 1983, before me, a Notary Public in and for the said County and State, came C.E. Colgan and Juanita W. Colgan, to me personally known to the same person who executed the foregoing instrument of writing and duly acknowledged the same. In testimony whereof I have hereunto set my hand and affixed my Notarial Seal, the day and year above written.

Dellie Deedlund
Notary Public
1-20-86

My appointment expires 20 January, 1986

This plat of "COLGAN ADDITION" Wichita, Sedgwick County, Kansas, has been submitted to and approved by the Wichita-Sedgwick County Metropolitan Area Planning Commission, Wichita, Kansas.

Dated this 10th day of February, 1983.

WICHITA, SEDGWICK COUNTY METROPOLITAN AREA PLANNING COMMISSION

David Bayouth, Chairman

Robert A. Lakin, Secretary

This plat approved and all dedications shown hereon, if any, accepted by the Board of City Commissioners of the City of Wichita, Kansas, this 12th day of FEB, 1983.

Albert J. Kirk, Mayor

Donald C. Gistic, City Clerk



This plat approved and all dedications shown hereon, if any, accepted by the Board of County Commissioners of Sedgwick County, Kansas, this ___ day of _____, 19__.

Jack Spratt, Commissioner

Tom Scott, Commissioner

Donald E. Gragg, Commissioner

ATTEST: Dorothy K. White, County Clerk

Entered on transfer record this ___ day of _____, 19__.

Dorothy K. White, County Clerk

STATE OF KANSAS)
COUNTY OF SEDGWICK) SS

This is to certify that this instrument was filed for record in the Register of Deeds Office, at ___ o'clock ___, M., on the ___ day of _____, 19__.

Bette F. McCart, Register of Deeds

Pat Kattler, Deputy