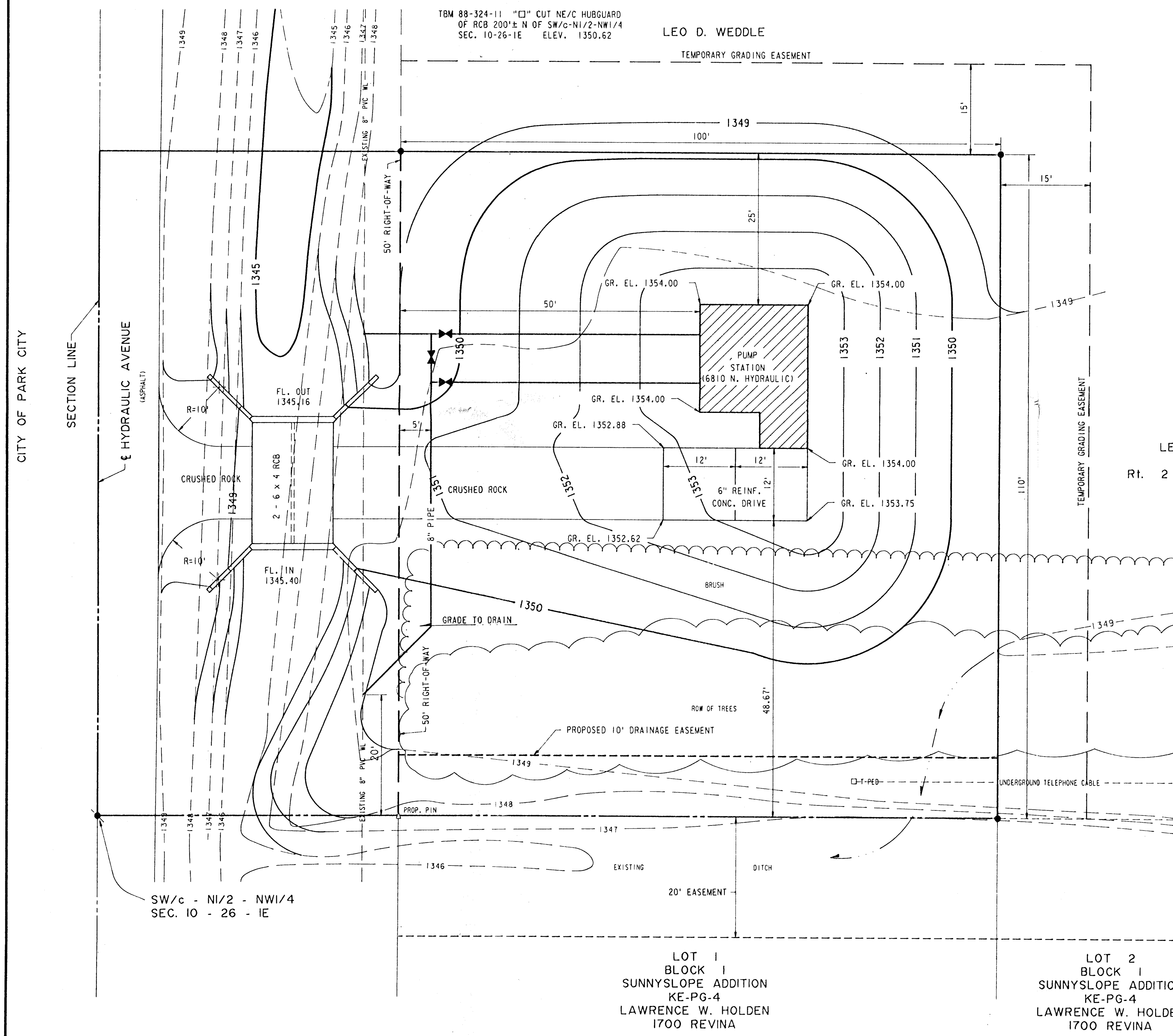


TOPOGRAPHIC SKETCH of "COLISEUM BOOSTER PUMP STATION ADDITION" in SECTION 10, T26S - R1E of the 6th P.M. SEDGWICK COUNTY, KANSAS

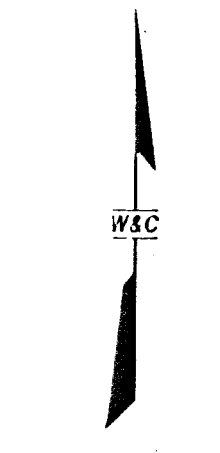


TBM 88-324-11 "□" CUT NE/C HUBGUARD
OF RCB 200'± N OF SW/C-N1/2-NW1/4
SEC. 10-26-1E ELEV. 1350.62

LEO D. WEDDLE

TEMPORARY GRADING EASEMENT

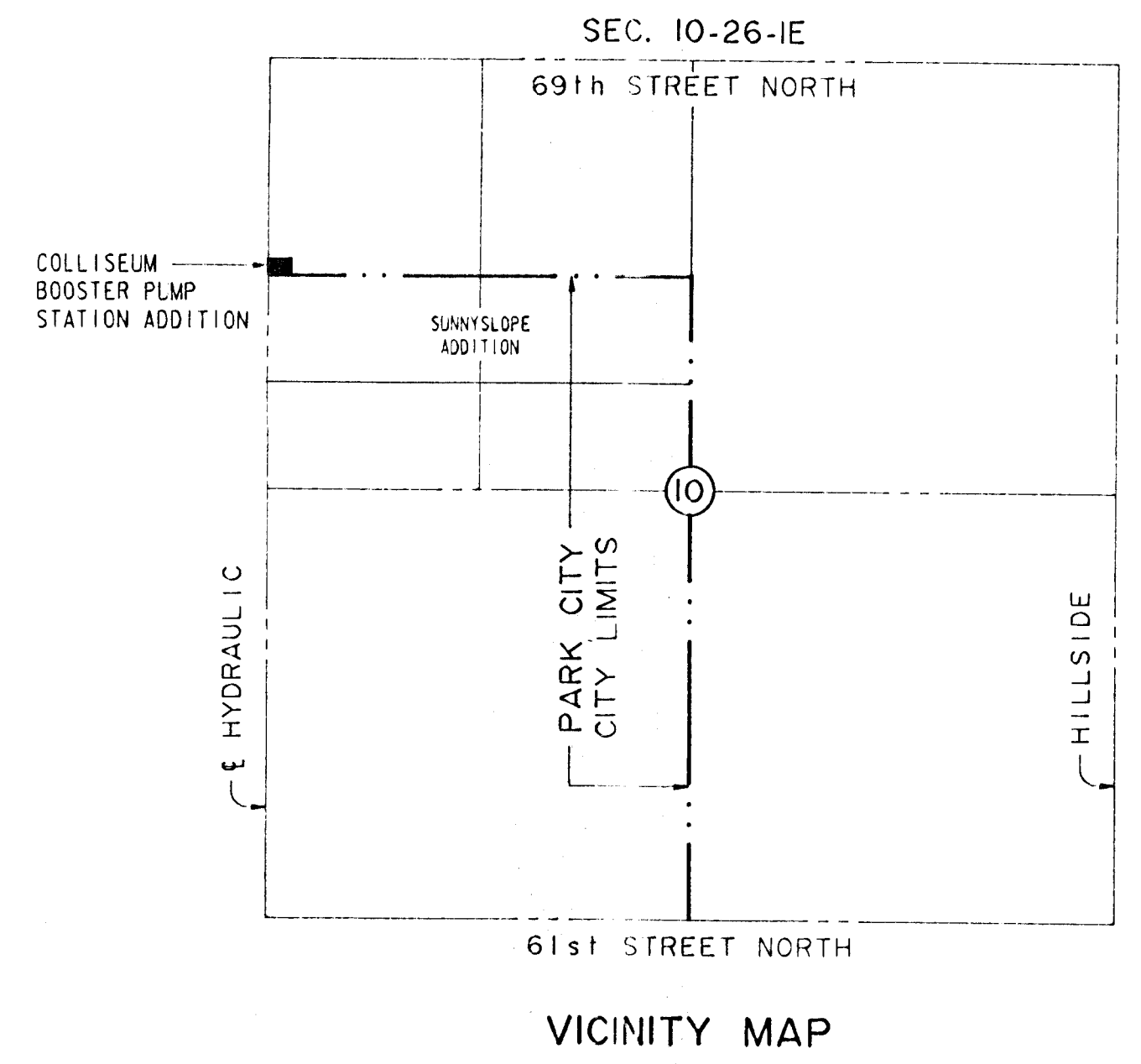
LEO D. WEDDLE
KE-80
RI. 2 VALLEY CENTER



1" = 10'-0"

LEGEND

- △ FOUND 1/2" REBAR
- SET 5/8" REBAR W/CAP



VICINITY MAP

LOT 1
BLOCK 1
SUNNYSLOPE ADDITION
KE-PG-4
LAWRENCE W. HOLDEN
1700 REVINA

LOT 2
BLOCK 1
SUNNYSLOPE ADDITION
KE-PG-4
LAWRENCE W. HOLDEN
1700 REVINA