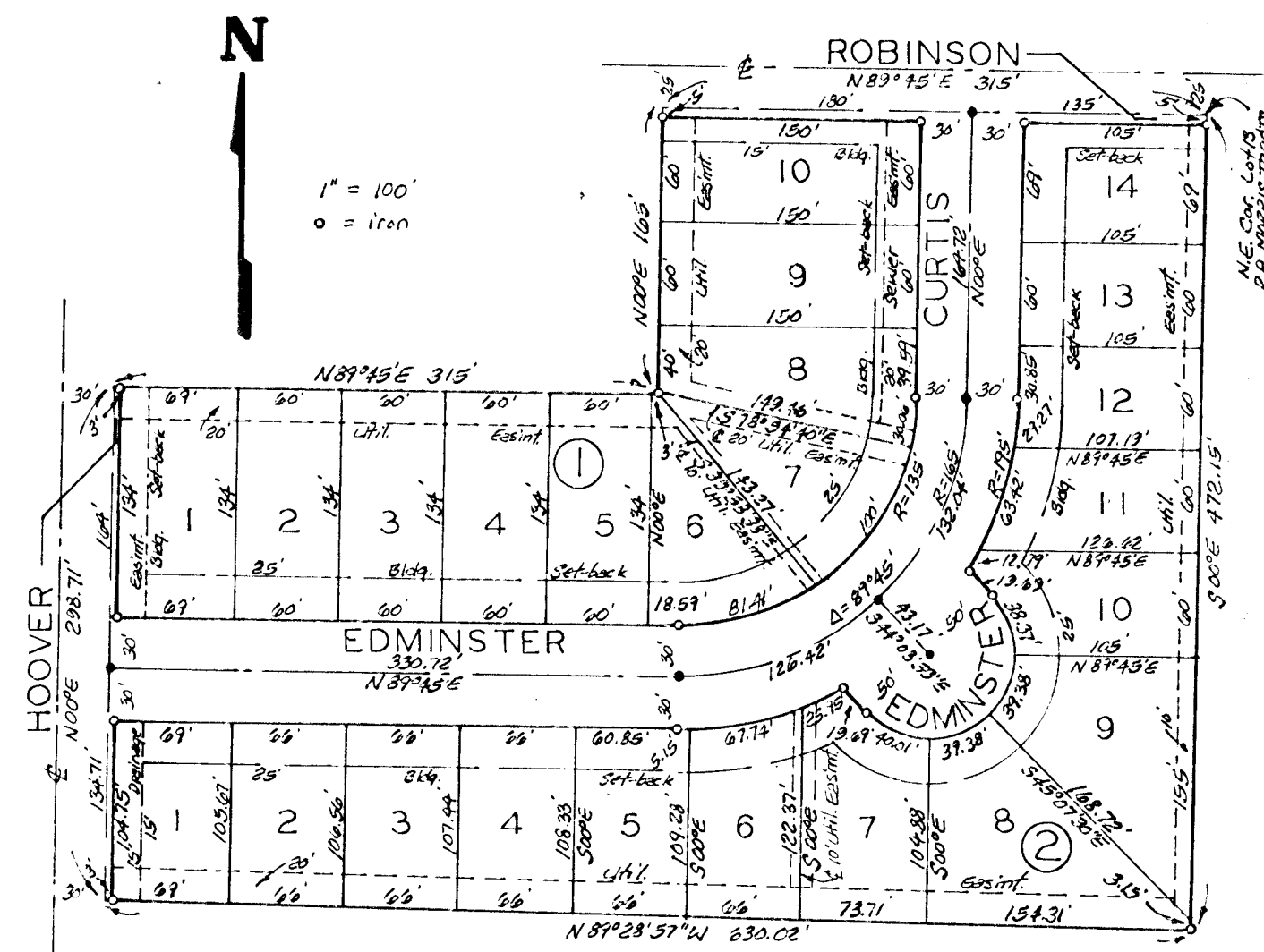


# COMFORT WEST ADDITION

WICHITA, KANSAS.



State of Kansas }  
 Sedwick County } S.S. We, Baughman Company, P.A., Surveyors  
 in abovesaid county and state do hereby certify that we have  
 surveyed and platted "COMFORT WEST ADDITION",  
 Wichita, Kansas and that the accompanying plat is a  
 true and correct exhibit of the property surveyed desc-  
 ribed as and being a replat of Lot 13, except the  
 north 165 feet of the west 315 feet thereof and the N 1/2  
 of Lot 14, R.A. Morris Tracts, Sedwick County, Kansas.  
 All being situated in the NW 1/4 of Sec. 14, Twp. 27S, R-1-W.

Baughman Company, P.A.

2/4/92  
Date

William L. Korber Surveyor  
William L. Korber

Know all men by these presents that  
 we, the undersigned, have caused the land described in  
 the surveyors certificate to be platted into Lots, Blocks,  
 and streets to be known as "COMFORT WEST ADDITION",  
 Wichita, Kansas. The streets are hereby dedicated to  
 and for the use of the public. Easements are hereby  
 granted for the construction and maintenance of all public  
 utilities. The drainage easement is hereby granted for  
 drainage purposes.

Comfort Homes, Inc.

Richard A. Neidens President  
Richard A. Neidens

This plat of "COMFORT WEST ADDITION",  
 Wichita, Kansas has been submitted to and approved by the  
 Wichita-Sedwick County Metropolitan Area Planning Commission,  
 Wichita, Kansas. Dated this 3rd day of December, 1981.

Wichita-Sedwick County Metropolitan Area Planning Commission.

James G. Grogg Chairman  
James G. Grogg  
Robert A. Lakin Secretary  
Robert A. Lakin

This plat approved and all dedications  
 shown hereon accepted by the Board of Commissioners of  
 the City of Wichita, Kansas, this \_\_\_ day of \_\_\_ 198\_\_.

Walter J. ... Mayor  
Donald C. ... City Clerk  
Donald C. ...

This plat approved and all dedications  
 shown hereon accepted by the Board of Commissioners of  
 Sedwick County, Kansas, this \_\_\_ day of \_\_\_ 198\_\_.

Jack Spratt Chairman  
Tom Scott Commissioner  
Donald G. Grogg Commissioner  
Carolyn K. White County Clerk  
Carolyn K. White

Entered on transfer record this \_\_\_ day of \_\_\_ 198\_\_.

Carolyn K. White County Clerk  
Carolyn K. White

State of Kansas }  
 Sedwick County } S.S. The foregoing instrument was ack-  
 nowledged before me this 8th day of February, 1982,  
 by Richard A. Neidens, President of Comfort Homes, Inc.

My App't. Exp. 12/24/84 Mark A. Saway Notary Public  
Mark A. Saway

We, the undersigned, holders of  
 a mortgage on the above described property do here-  
 by consent to this plat of "COMFORT WEST ADDITION",  
 Wichita, Kansas.

State Bank of Colwich, Kansas  
C. J. Suelentrop Vice-President  
C. J. Suelentrop

State of Kansas }  
 Sedwick County } S.S. The foregoing instrument was ack-  
 nowledged before me, this 18th day of February, 1982,  
 by C. J. Suelentrop, Vice-President of State Bank  
 of Colwich, Kansas.

My App't. Exp. 3/2/85 Frank A. ... Notary Public  
Frank A. ...

State of Kansas }  
 Sedwick County } S.S. This is to certify that this plat  
 has been filed for record in the office of the  
 Register of Deeds, this \_\_\_ day of \_\_\_ 198\_\_,  
 at \_\_\_ o'clock \_\_\_ M.; and is duly recorded.

Bette F. ... Register of Deeds  
Bette F. ...  
Pat Kettler Deputy  
Pat Kettler