

ELEVATION REFERENCE MARKS

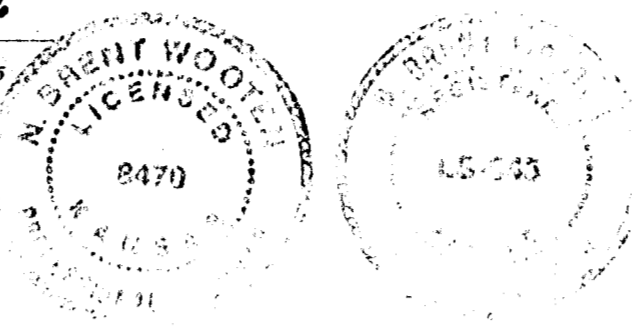
RM 76 - Railroad spike in power pole located east of Wheatland Drive, about 2000' south of Central Avenue. Elev. 1340.72 (NGVD)

RM 77 - Top of iron in thimble on the north side of Maple Street, one half mile east of 135th Street West. Elev. 1321.81 (NGVD)

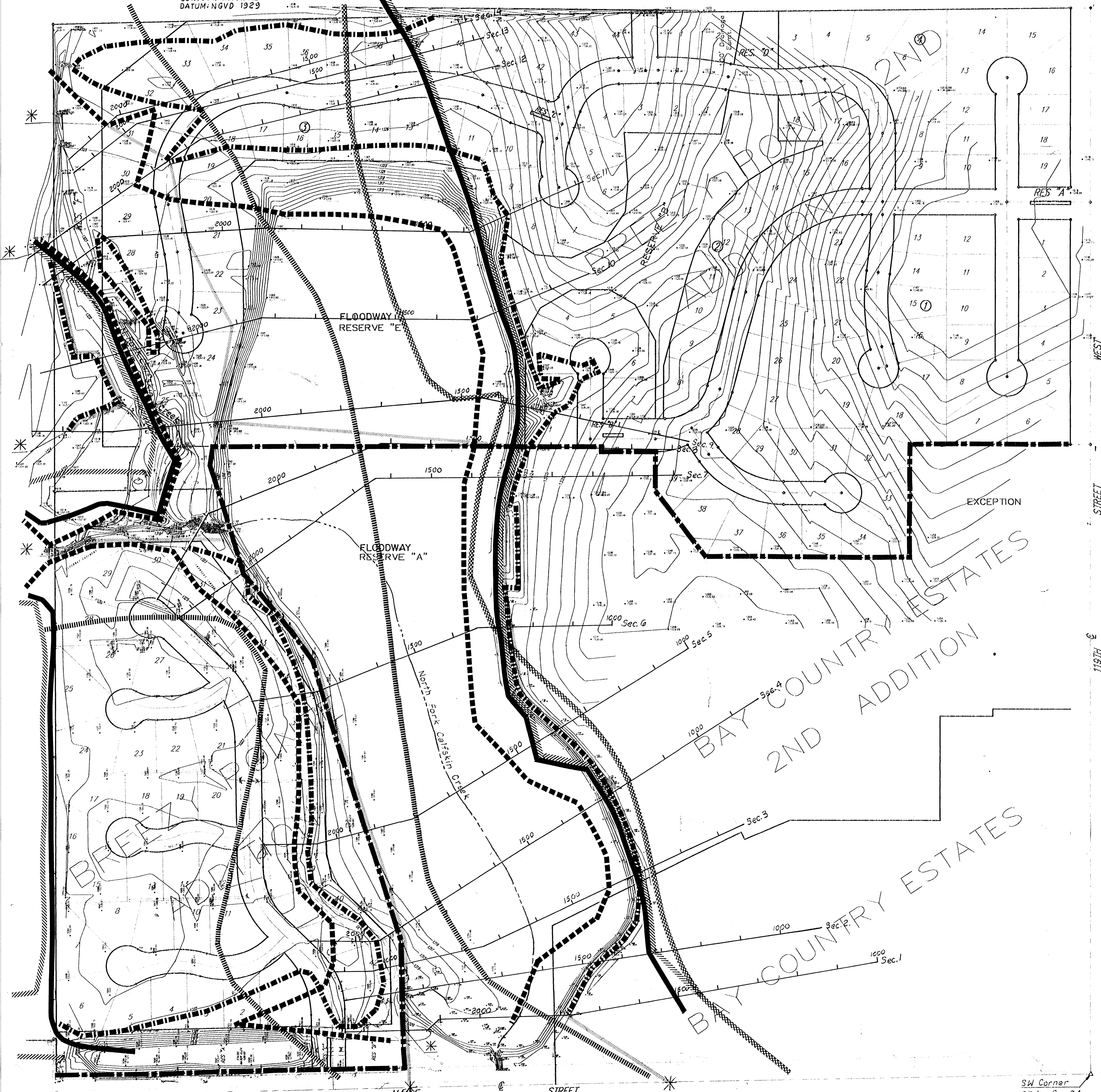
BENCH MARK
 20' Stake in S. Face of light pole
 30' N & 45' W of center-line of
 1500' S. W. and 450' E.
 Elevation = 1329.72 M.S.L.
 Datum = 142.32 City Datum

L. N. BRENT WOOTEN, A REGISTERED PROFESSIONAL ENGINEER IN THE STATE OF KANSAS, DO HEREBY CERTIFY TO THE BEST OF MY KNOWLEDGE THAT THIS TOPOGRAPHIC MAP REPRESENTS WITHIN U.S. NATIONAL MAP STANDARDS TRUE ELEVATIONS ON THE GROUND AS OF FEBRUARY 25, 1993

L. N. Brent Wooten
 L. N. BRENT WOOTEN
 P.E. NO. 5474 U.S. NO. 245
 GAUGHMAN COMPANY, P.A.



Scale 1" = 100'
 0 100 200 300 400
 CONTOUR INTERVAL 1 FOOT
 DATUM: NGVD 1929



LEGEND

- ▬▬▬ Applicant's Property Boundary
 - ▬▬▬ Effective 100 Year Floodway Limit (From Panel 200328-0020)
 - ▬▬▬ Effective 100 Year Floodplain Limit (From Panel 200328-0020)
 - ▬▬▬ Existing Conditions Floodway Limit ≠
 - ▬▬▬ Existing Conditions 100 Year Floodplain Limit
 - ▬▬▬ Existing Conditions 500 Year Floodplain Limit
 - ▬▬▬ Revised Conditions Floodplain Limit
 - ▬▬▬ Revised Conditions Floodway Limit
 - * Match C.L.O.M.R. "Existing Conditions" Floodway Limits
- ≠ Existing Conditions Refers to the Limits set for the C.L.O.M.R. as submitted in April, 1988.

TOPOGRAPHIC WORK MAP
 SE QUARTER, SECTION 24, T27S, R2W
 CITY OF WICHITA, KANSAS
PROFESSIONAL ENGINEERING CONSULTANTS, P.A.
 ENGINEERS
 WICHITA, KANSAS

Designed by *MWB, PDF* Job No. *93122* Sh. *1* of *1*
 Drawn by *JGP* Date *March, 93*

FILL SURVEY
 BREEZY POINT AND BREEZY POINT 2ND ADDITION

BAUGHMAN COMPANY P. A.
 ENGINEERING & SURVEYING
 316/282-7271 • 315 ELLIS • WICHITA, KANSAS 67211

PROJECT NUMBER _____ SHEET _____ OF _____

DESIGN	DRAWN	UTIL. CHECKED	DATE	SCALE	OF
	BP				

SW Corner
 SE 1/4 Sec. 24,
 T27S, R2W