

# GENERAL NOTES

A saw cut of at least one-half the depth of existing surface courses or one-fourth the depth of existing total pavement thickness shall be provided at locations where proposed construction abuts an existing surface course or pavement for which partial removal of that surface or pavement is required, except when such saw cuts are within three (3) feet of an existing joint the limits of removal shall be extended to the existing joint. Such saw cuts will not be paid for directly and this cost shall be considered as subsidiary to the removal of the surface or pavement.

Rubble from the removal of miscellaneous structures and excess excavation which is to be wasted shall be disposed of on sites to be provided by the Contractor. These sites shall be approved by the Engineer as to suitability, appearance and site location. Locations that, in the opinion of the Engineer, will leave an unsightly appearance will not be approved.

All disposal sites must be approved by the Kansas Department of Health and Environment. Material either stockpiled or disposed of in a flood plain would require a Kansas State Board of Agriculture permit. Any material dumped in waters of the United States or wetlands is subject to U.S. Corps permitting regulations. Any material buried or stockpiled beyond approved of Engineers construction limits would require additional archeological investigations unless buried in a previously approved borrow location.

The Contractor shall notify pipeline companies at least 24 hours in advance of any work being performed across and/or adjacent to pipelines.

Trees and shrubs in public right-of-way which are in direct conflict with proposed new construction shall be removed by the Contractor with the Engineer's approval. Trees and shrubs which are not in direct conflict with proposed new construction shall be saved and protected from damage.

Limits of earthwork shall match existing ground elevations at the right-of-way line unless otherwise noted on the plans with a new finished grade elevation. When a new finished grade elevation is shown, the earthwork shall extend one foot beyond the right-of-way line and then sloped up or down using permissible slopes to match the existing ground surface.

The Contractor shall be responsible for preserving property irons. The Contractor will be required to re-establish any property irons which are damaged or destroyed by his construction operations. Such irons shall be re-established by a licensed land surveyor in accordance with state laws.

Contractor will be required to provide a minimum advance notice of twenty-four (24) hours to utility companies prior to starting any excavation as follows:

- Kansas One-Call 687-2470
- The Contractor must notify the following in case of an emergency:
- Cablevision 262-4270 or 263-2061
  - K.C. & E. Gas 383-8650
  - K.C. & E. Electric 383-8600
  - People's Natural Gas Company 942-8350 or 263-8161
  - Southwestern Bell Telephone Company 1-571-2611
  - City of Wichita Water Department 268-4009
  - City of Wichita Sewer Maintenance 268-4071

The Contractor will provide temporary seeding of the R/W with ryegrass at a rate of 100lbs/acre.

Contractor Shall Contact Steve Miller @ 720-6600 Prior to Construction to arrange locations from which Borrow Can be obtained.

TOTAL PROJECT LENGTH = 1779 FT

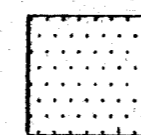
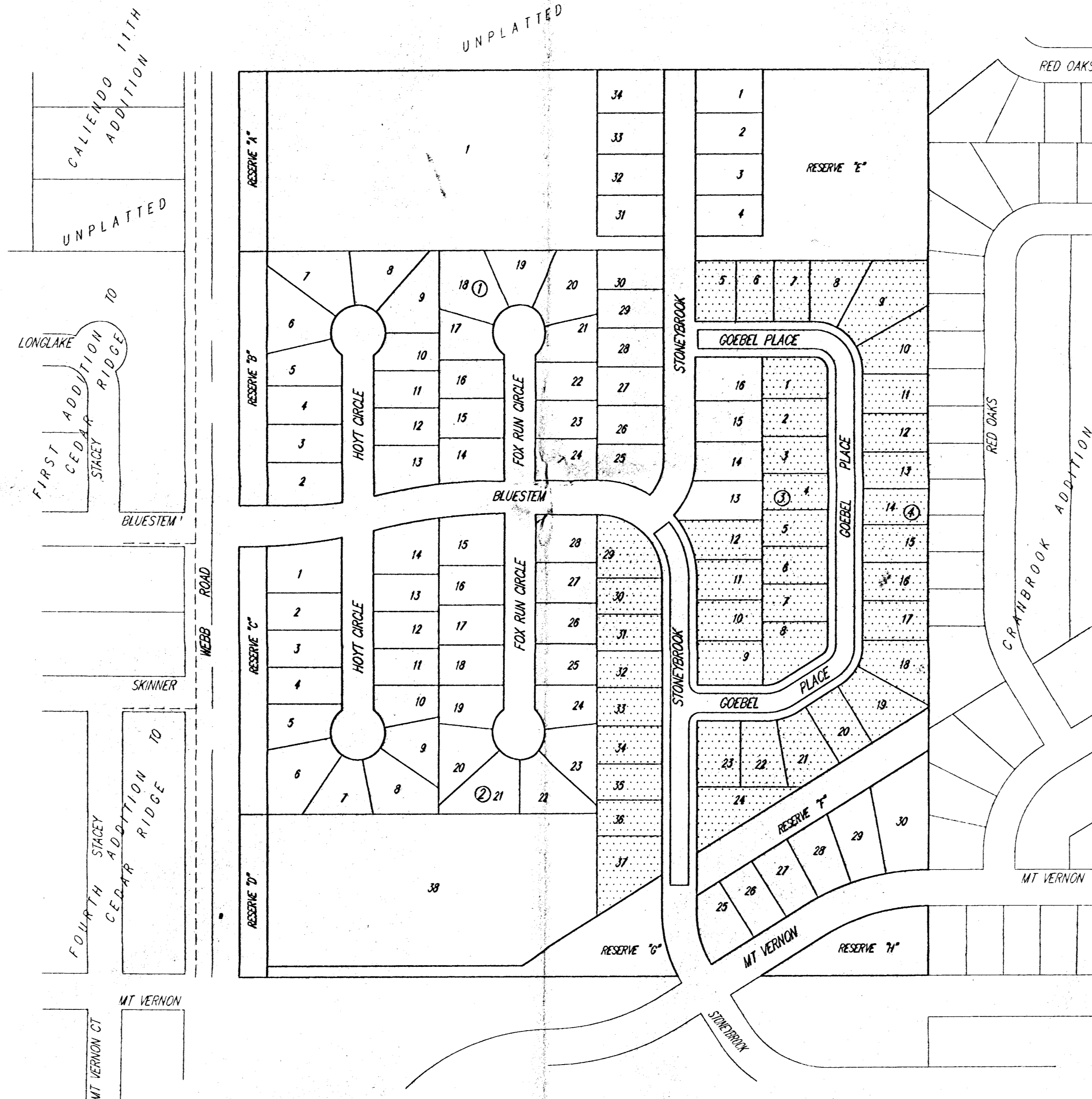
EARTHWORK SUMMARY		
EXCAVATION	868.4	C.Y.
LOOSE FILL	2979.8	C.Y.
COMPACTED FILL	2214.7	C.Y.
BORROW	4328.1	C.Y.

# PHASE 2 STREET IMPROVEMENTS BRENTWOOD VILLAGE ADDITION

PROJECT NO. 472-82796

INDEX 764902

**GOEBEL PLACE: FROM THE E.L. OF STONEYBROOK TO THE E.L. OF STONEYBROOK**  
**STONEYBROOK: FROM THE E.L. OF STONEYBROOK TO THE C.L. OF PIPELINE EASEMENT**



**IMPROVEMENT DISTRICT**

**CITY OF WICHITA, KANSAS**  
**MICHAEL E. LINDEBAK, P.E.**

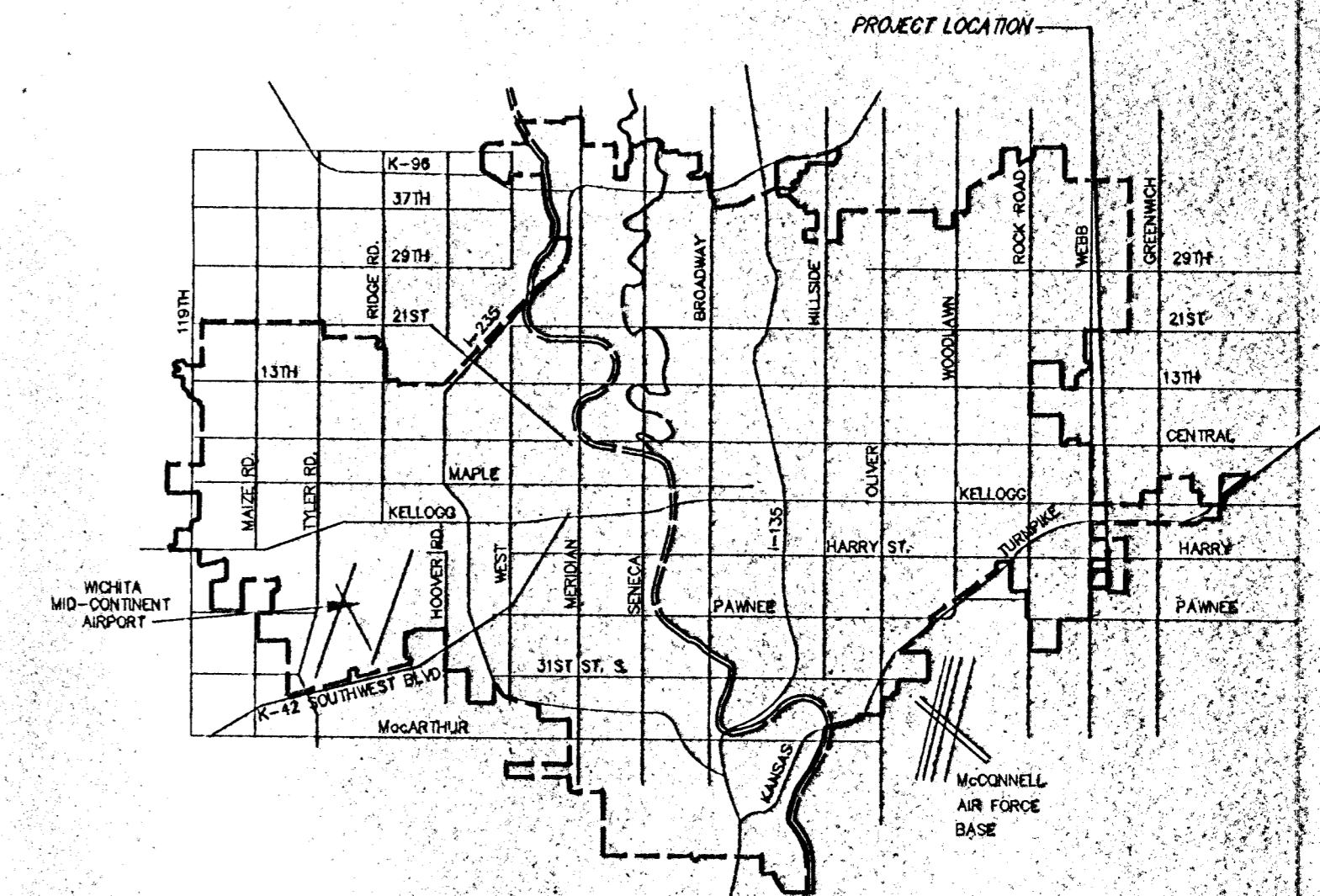
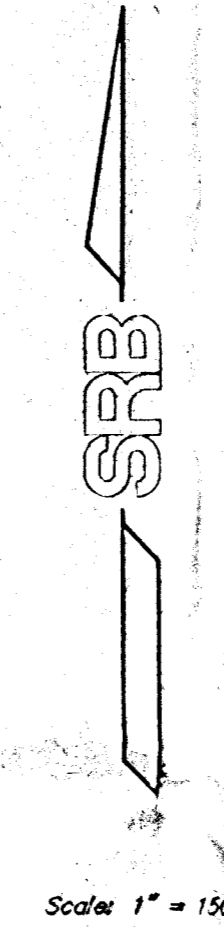
# BENCH MARKS

BM #1 - WEBB ROAD AND MT. VERNON, 1/2 MILE SOUTH OF HARRY COV. BM. 47' W AND 44' S OF 1/4 SEC. CORNER 37.2' N OF N FACE SIDEWALK E/W. 64.4' NW OF 1/4 SEC. CORNER 3.6' E OF 6' TALL CONC. FENCE. CITY DATUM = 182.49

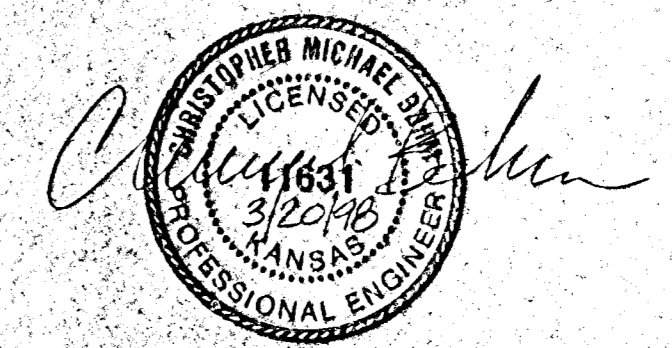
BM #2 - SQUARE CUT TOP OF SOUTH ON FUNSTON APPROXIMATELY 38' WEST OF N.E. CORNER OF LOT 1 BLOCK 1 CRANBROOK ADDITION. CITY DATUM = 173.18

# INDEX OF SHEETS

1. TITLE SHEET
2. TYPICAL 35' PAVEMENT DETAILS
3. VALLEY GUTTER DETAILS
- 4-5. STONEYBROOK
- 6-8. GOEBEL PLACE
- 7-8. STONEYBROOK
9. SIGNING DETAIL
- 10-12. CROSS SECTIONS
13. PLAT



VICINITY MAP



**SRB** 924 NORTH MAIN WICHITA, KANSAS 67203 316-264-8008 FAX 316-264-4621  
**SAVOY, RUGGLES & BOHM, P.A.**  
 ENGINEERING & SURVEYING