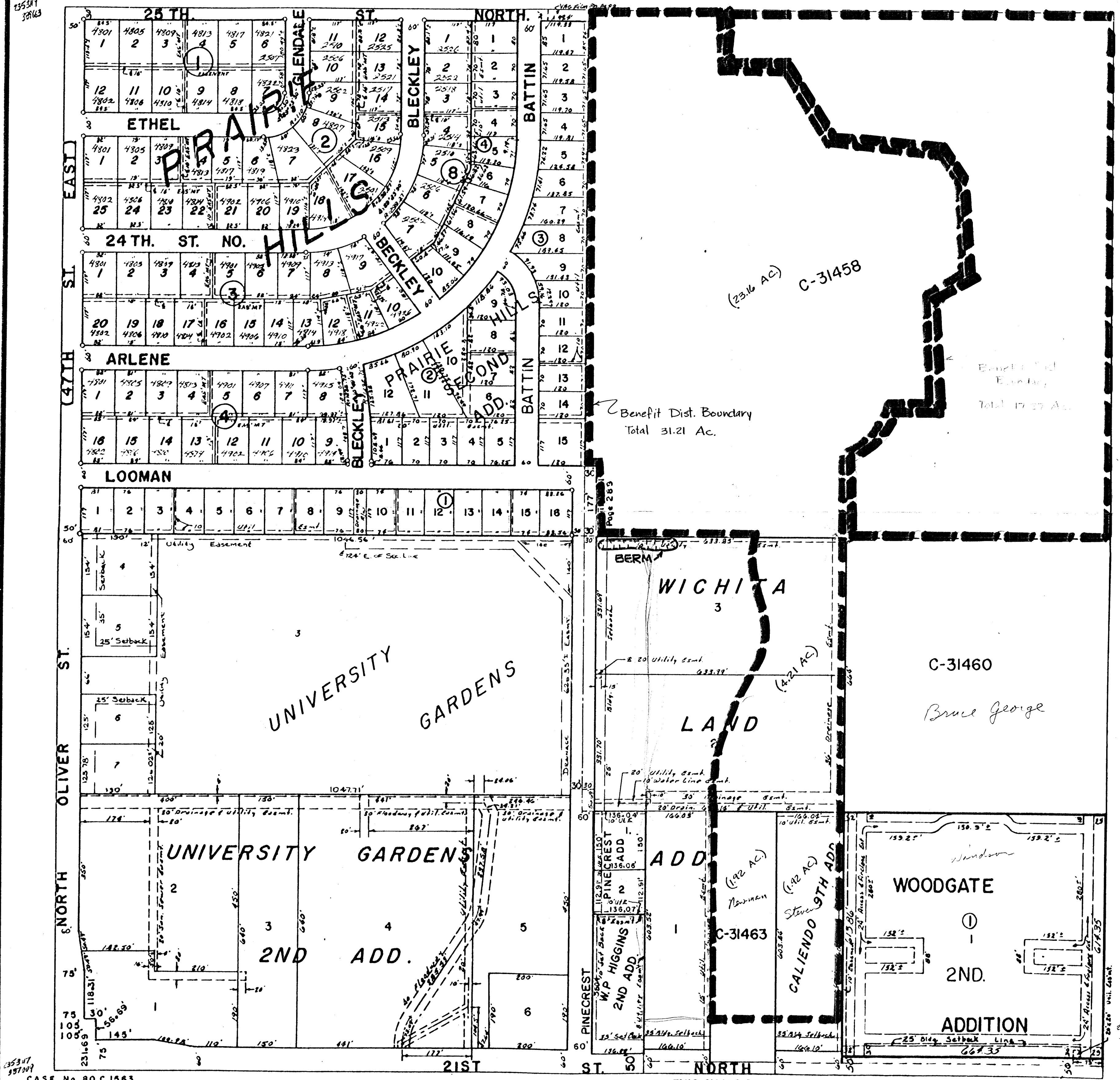


S.W. 1/4 SEC. 1, TWP. 27S. R. 1 E. 2355790
389675

MAP STATUS * DATE: ()
Dwg. Streets ()
Dwg. Boundaries ()
Dwg. Parcels ()



CASE No 80 C 1563

THIS SHEET PREPARED UNDER SUPERVISION OF
DON WRIGHT, SEDGWICK COUNTY CLERK