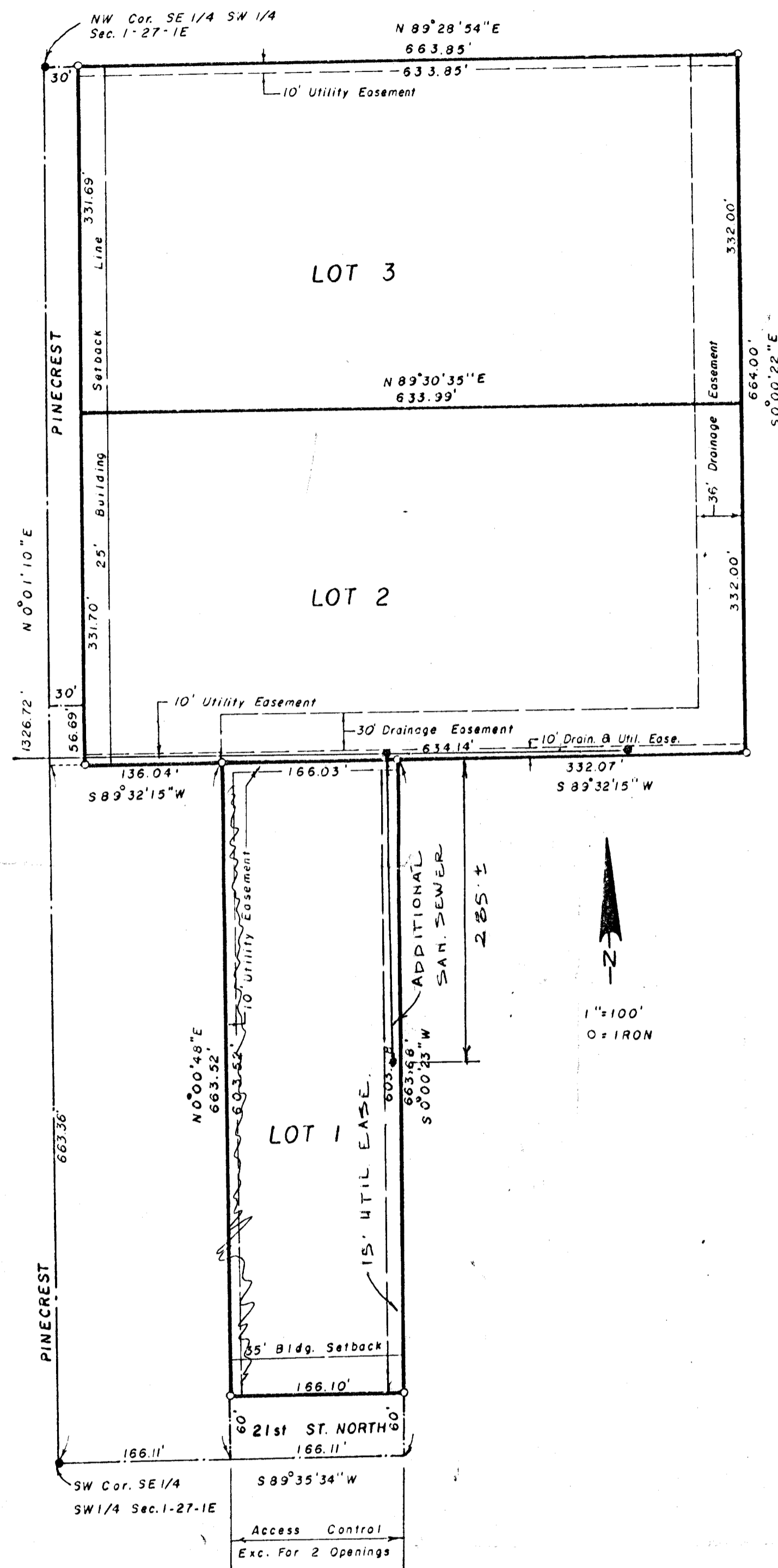


WICHITA LAND ADDITION

WICHITA, SEDGWICK COUNTY, KANSAS



State of Kansas, County of Sedgwick, SS.

The foregoing instrument was acknowledged before me this _____ day of _____, 1983, by _____ of Fourth National Bank and Trust Company, Wichita, Kansas, a Kansas Corporation, on behalf of the corporation.

_____, Notary Public

My Commission expires: _____

This plat of "Wichita Land Addition", Wichita, Sedgwick County, Kansas has been submitted to and approved by the Wichita-Sedgwick County Metropolitan Area Planning Commission, Wichita, Kansas.

Dated this _____ day of _____, 1983.

Wichita-Sedgwick County Metropolitan Area Planning Commission

_____, Chairman

David Bayouth

_____, Secretary

Robert A. Lakin

This plat approved and all dedications shown hereon, if any, accepted by the Board of City Commissioners of the City of Wichita, Kansas, this _____ day of _____, 1983.

_____, Mayor

Margaloe Wright

_____, City Clerk

Donald C. Gisick

This plat approved and all dedications shown hereon, if any accepted by the Board of County Commissioners of Sedgwick County, Kansas, this _____ day of _____, 1983.

_____, Chairman

Jack Spratt

_____, Commissioner

Tom Scott

_____, Commissioner

Donald E. Gragg

ATTEST:

_____, County Clerk

Entered on transfer record this _____ day of _____, 1983.

_____, County Clerk

Dorothy K. White

State of Kansas, County of Sedgwick, SS.

This is to certify that this instrument was filed for record in the Register of Deeds Office, at _____ o'clock, _____ m., on the _____ day of _____, 1983

_____, Register of Deeds

Bette F. McCart

_____, Deputy

State of Kansas, County of Sedgwick, SS.

I, Lowell D. High, Land Surveyor in the State of Kansas do hereby certify that I have surveyed and platted "Wichita Land Addition", Wichita, Sedgwick County, Kansas and that the accompanying plat is a true and correct exhibit of said survey described as follows: The South Half of the Northwest Quarter of the Southeast Quarter of the Southwest Quarter of Section 1, Township 27 South, Range 1 East of the 6th P.M., except the West 30 feet of the South 56.69 feet thereof, Sedgwick County, Kansas; and the East Half of the West Half of the South Half of the West Half of the Southeast Quarter of the Southwest Quarter of Section 1, Township 27 South, Range 1 East of the 6th P.M., Sedgwick County, Kansas; and the North Half of the Northwest Quarter of the Southeast Quarter of the Southwest Quarter of Section 1, Township 27 South, Range 1 East of the 6th P.M., Sedgwick County, Kansas.

Lowell D. High, L.S.

Know all men by these presents that Wichita Land Associates, Inc., a Kansas Corporation, by Aleksandar Hadijski, President, has caused the land described in the Land Surveyor's Certificate to be platted into Lots and Streets to be known as "Wichita Land Addition", Wichita, Sedgwick County, Kansas.

The streets are hereby dedicated to and for the use of the public. Utility easements as indicated on the plat are hereby granted for the construction and maintenance of all public utilities. The drainage easement as indicated on the plat is hereby granted for drainage purposes. The drainage and utility easement as indicated on the plat is hereby granted for drainage purposes and construction and maintenance of all public utilities.

All abutter's rights of access to or from 21st Street North, over and across the south line of Lot 1, are hereby granted to the City of Wichita, provided, however, that Lot 1 shall have access to 21st Street North at two locations to be designated by the City Engineer of Wichita, Kansas.

Wichita Land Associates, Inc.,
a Kansas Corporation.

_____, President

Aleksandar Hadijski

Attest:

_____, Secretary

Patricia M. Stevenson

State of Kansas, County of Sedgwick, SS.

Be it remembered that on this _____ day of _____, 1983, before me a notary public in aforesaid county and state name Aleksandar Hadijski, President and to me known to be the same persons who executed the foregoing instrument of writing and duly acknowledged the execution of the same for and on behalf and as the act and deed of said corporation. In testimony thereof I have hereunto set my hand and affixed my notarial seal the day and year above written.

_____, Notary Public

My commission expires: _____

The Fourth National Bank and Trust Company, Wichita, Kansas, by _____, mortgagee to the land described in the Land Surveyor's Certificate, does hereby consent to the platting of "Wichita Land Addition", Wichita, Sedgwick County, Kansas.

Fourth National Bank and Trust Company, Wichita, Kansas

ATTEST: