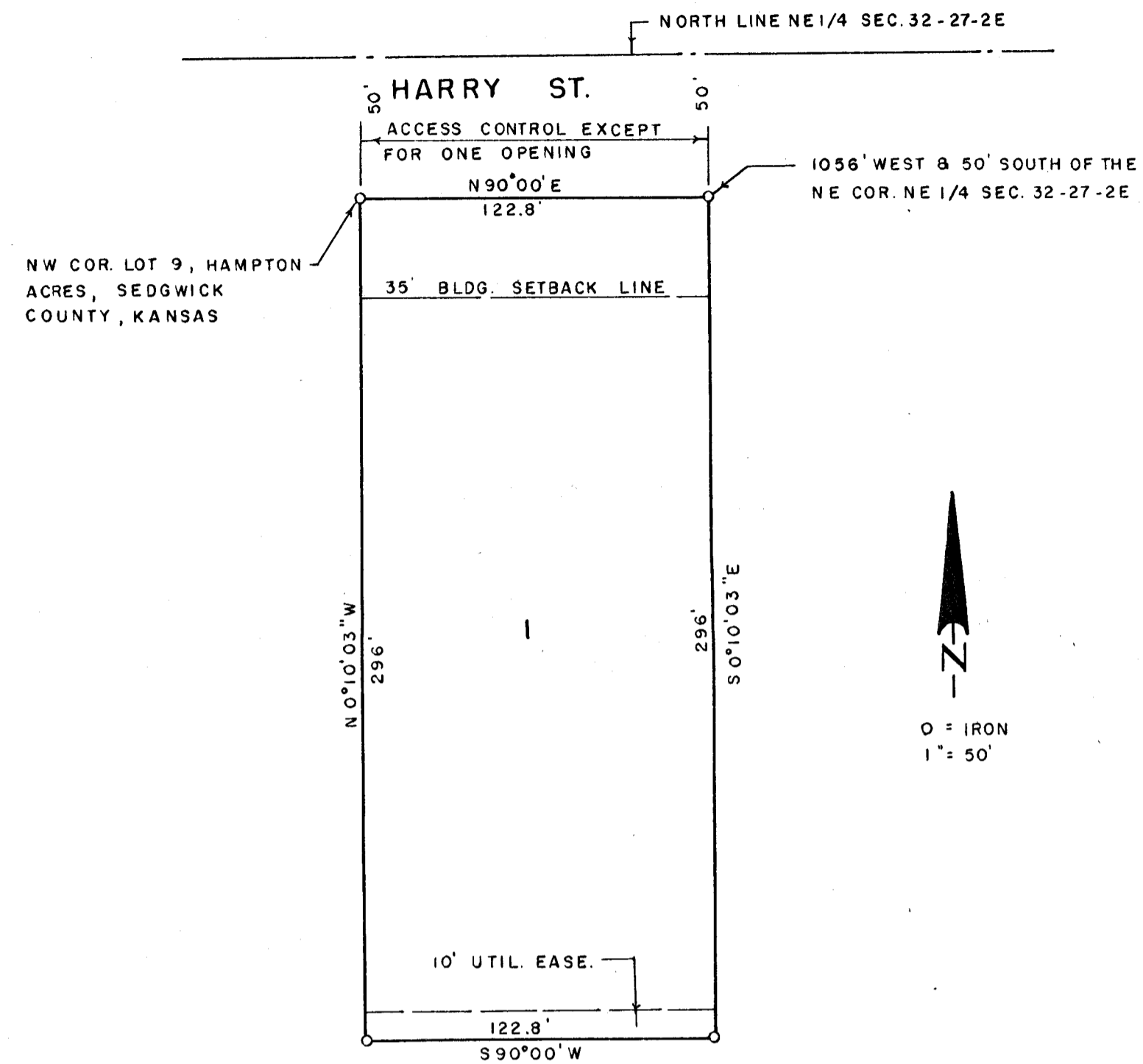


CEDAR LAKES PLAZA SECOND ADDITION

WICHITA, SEDGWICK COUNTY, KANSAS



State of Kansas, County of Sedgwick, SS.

I, Lowell D. High, Land Surveyor in said State and County do hereby certify that I have surveyed and platted "CEDAR LAKES PLAZA SECOND ADDITION", Wichita, Sedgwick County, Kansas and that the accompanying plat is A REPLAT OF and a true and correct exhibit of said survey described as follows: Lot 9, Hampton Acres, Sedgwick County, Kansas.

Lowell D. High
Lowell D. High 5-4-81
Land Surveyor



Know all men by these presents that we, Aleksandar Hadijski and Glenda A. Hadijski, husband and wife, have caused the land described in the Land Surveyor's certificate to be platted into a lot to be known as "CEDAR LAKES PLAZA SECOND ADDITION", Wichita, Sedgwick County, Kansas. Utility easements as indicated on the plat are hereby granted for the construction and maintenance of all public utilities.

All abutter's rights of access to or from Harry Street over and across the north line of Lot 1, are hereby granted to the City of Wichita, provided, however, that Lot 1 shall have access to Harry Street at one location to be designated by the City Engineer of Wichita, Kansas.

Aleksandar Hadijski *Glenda A. Hadijski*
Aleksandar Hadijski Glenda A. Hadijski

State of Kansas, County of Sedgwick, SS.

The foregoing instrument was acknowledged before me this 7 day of May , 19 81 by Aleksandar Hadijski and Glenda A. Hadijski, husband and wife.

Wm. W. Harrison
Notary Public
My Comm. Expires: 5-1-85
Wichita, Kansas

This plat of "CEDAR LAKES PLAZA SECOND ADDITION", Wichita, Sedgwick County, Kansas has been submitted to and approved by the Wichita-Sedgwick County Metropolitan Area Planning Commission, Wichita, Kansas.

Dated this 7TH day of May , 1981.

Wichita-Sedgwick County Metropolitan
Area Planning Commission

Alvin F. Hennessey, Jr. Chairman
Alvin F. Hennessey, Jr.
Robert A. Lakin Secretary
Robert A. Lakin

This plat approved and all dedications shown hereon accepted by the Board of City Commissioners of the City of Wichita, Kansas, this 19TH day of May , 1981.

R.C. Brown Mayor
R.C. Brown
Donald C. Gisick City Clerk
Donald C. Gisick

This plat approved and all dedications shown hereon accepted by the Board of County Commissioners of Sedgwick County, Kansas, this day of , 1981.

_____, Chairman
Donald E. Gragg
_____, Commissioner
Jack Spratt
_____, Commissioner
Tom Scott
_____, County Clerk
Dorothy K. White

Entered on transfer record this day of , 19 81 .
_____, County Clerk
Dorothy K. White

State of Kansas, County of Sedgwick, SS.

This is to certify that this instrument was filed for record in the Register of Deeds Office at o'clock a. m., on the day of , 19 81 .

_____, Register of Deeds
Bette F. McCart
_____, Deputy
Pat Kettler