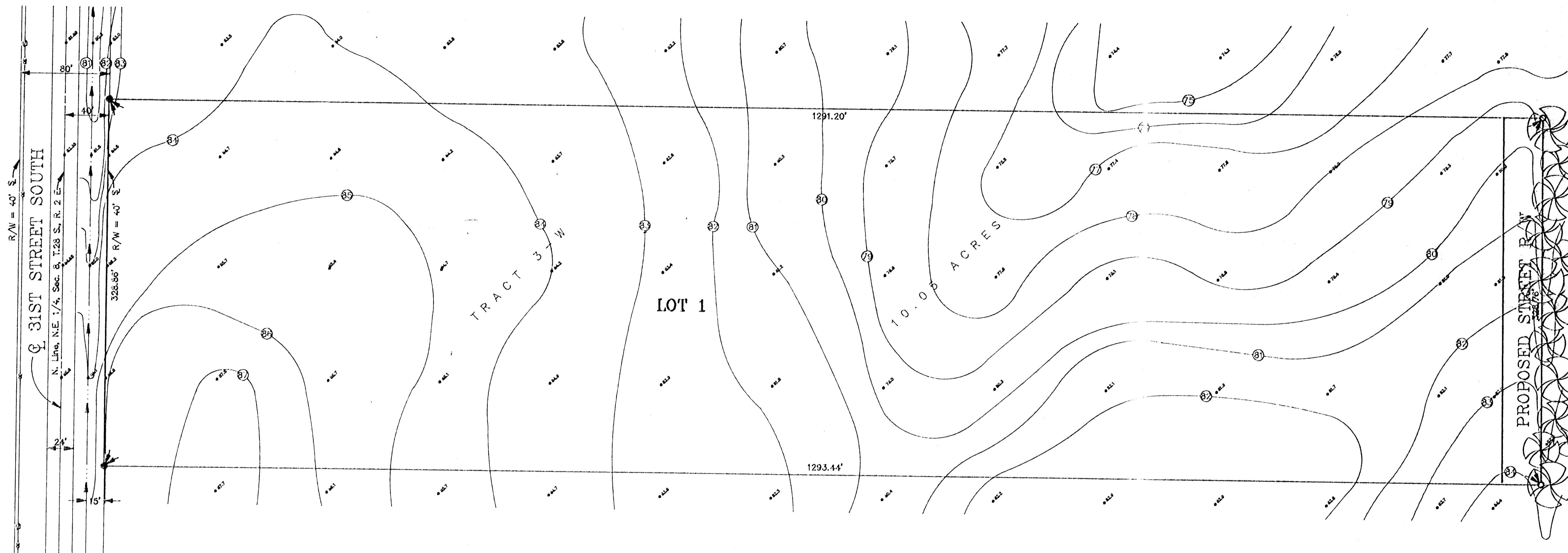
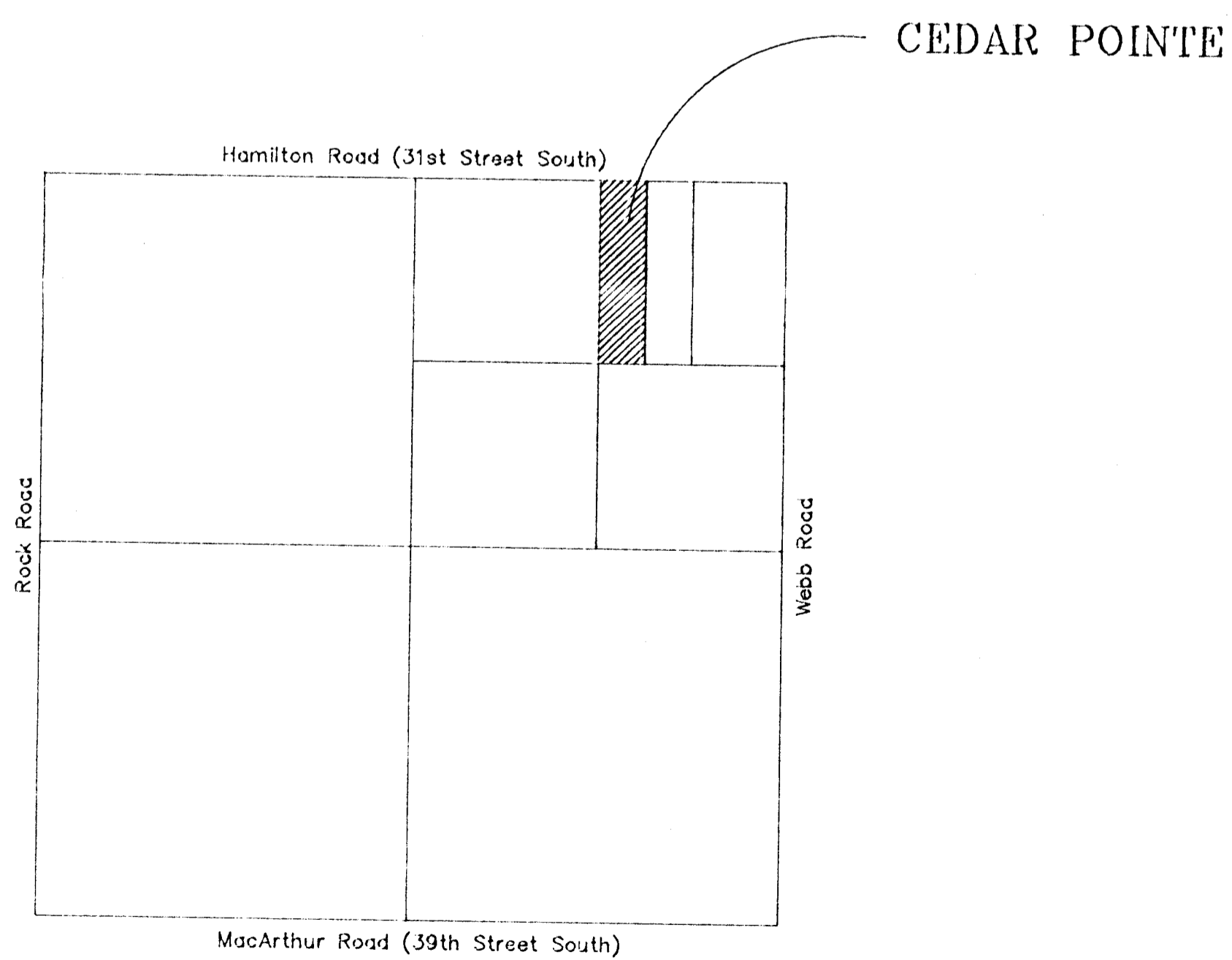


# sketch plat CEDAR POINTE

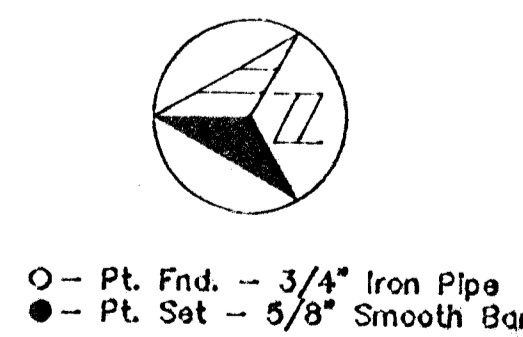


DESCRIPTION:  
Tract 3-W, in the West Half of the West Half of the Northeast Quarter of the Northeast Quarter, Section 8, Township 28 South, Range 2 East of the 6th Principal Meridian, Sedgwick County, Kansas, containing 10.05 Acre(s), more or less.



VICINITY MAP  
No Scale

FOR: CEDAR POINTE BAPTIST CHURCH  
C/O HANNEY & ASSOCIATES, ARCHITECTS  
1726 SOUTH HILLSIDE  
WICHITA, KS 67211  
683-8965



**GARRY E. SMITH**  
ENGINEERS / SURVEYORS  
107 N. SUMMIT - P.O. BOX 698 - ARKANSAS CITY, KS 67208 - (316) 442-4756  
DATE: 6/22/90 PROJECT: 10-054 SCALE: 1" = 50' SHEET: 1 OF 1 DRAWN: EGR

BM -- Sat. Step Spike in  
Power Pole NE of NE Cor.  
of Tract 3-W. Elev. = 1383.77

Ref. BM -- "□" Chisled on Ctr. E.  
Hubguard RCB @ 100' N. and 18' E.  
of NE Cor. Sec. 8, T.28S., R.2E.  
Elev. = 1388.11

CEDAR POINTE BAPTIST CHURCH  
SEC. 8, T.28S., R.2E., SEDGWICK CO., KANSAS