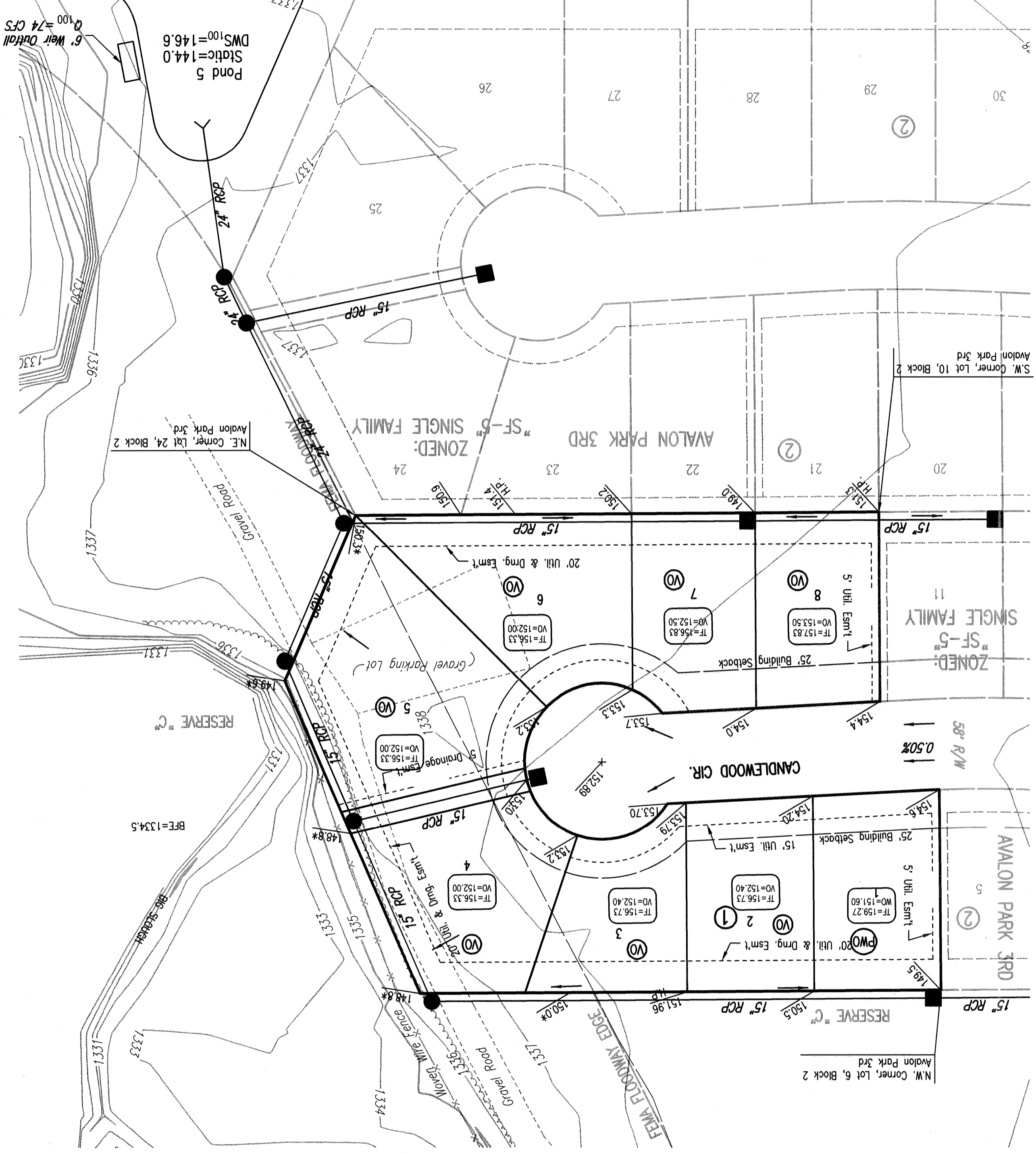


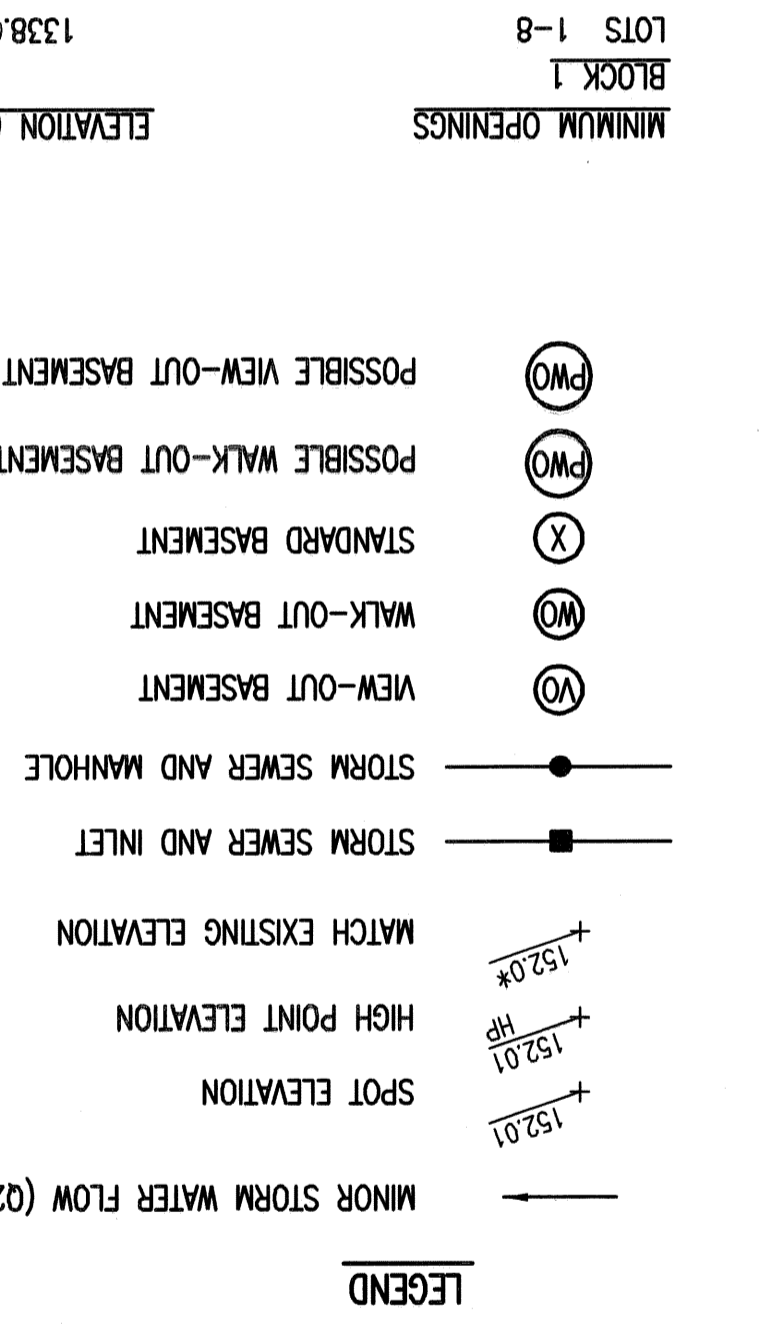
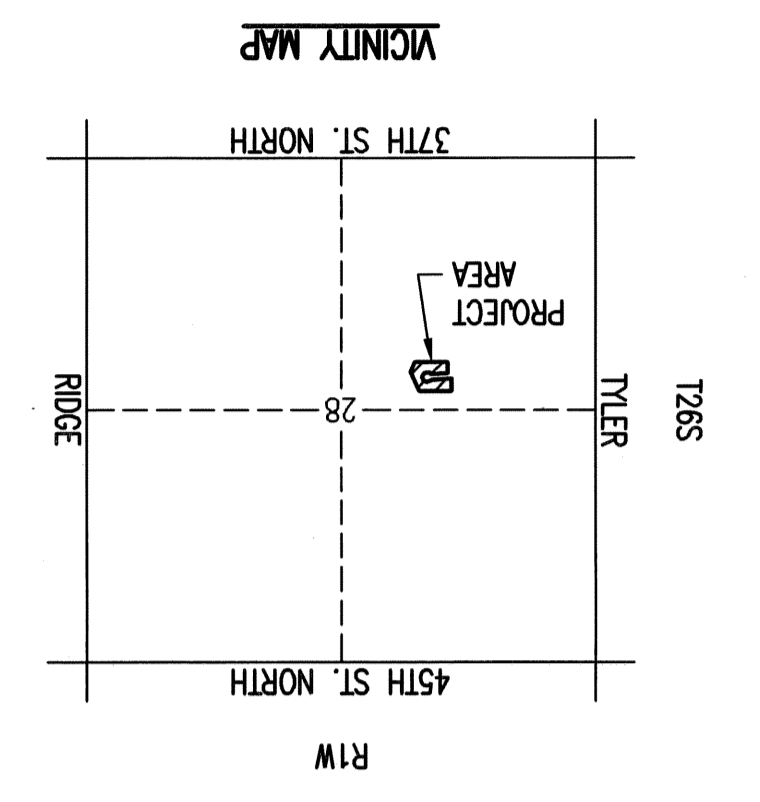
# FOUR CORNER PLAN FOR AVALON PARK 4TH AN ADDITION TO WICHITA, SEDGWICK COUNTY, KANSAS



DATE OF PREPARATION: JUNE 6, 2006  
 DATE OF TOPOGRAPHIC SURVEY: NOVEMBER 10, 2004  
 OWNER: AVALON PARK, LLC  
 7926 W. 21ST ST., STE. 200  
 WICHITA, KANSAS 67205  
 SUBDIVIDER: PROFESSIONAL ENGINEERING CONSULTANTS, P.A.  
 303 S. TOPEKA  
 WICHITA, KS 67202

**BENCHMARKS:**  
 BM #55 - R.R. Spike in E. face Power Pole W. side  
 Tyler Rd. at House #3915  
 Elev.=1340.28 N.G.V.D.  
 Elev.=152.88 CITY DATUM  
 BM #56 - R.R. Spike in E. face Power Pole W.  
 side Tyler Rd. 2nd Pole S. of R.R. Tracks  
 Elev.=1339.98 N.G.V.D.  
 Elev.=152.58 CITY DATUM  
 BM #57 - Chiseled "d" on S. end RCP at entrance  
 to "the edge" Paintball Adventures,  
 E. side Tyler Rd. between R.R. Tracks  
 and K96 Highway.  
 Elev.=1340.74 N.G.V.D.  
 Elev.=153.34 CITY DATUM  
 BM #58 - Chiseled "d" on S. end concrete headwall,  
 E. end RCB under Tyler Rd. at 1/2 mile  
 line, S. of K96 Highway.  
 Elev.=1342.03 N.G.V.D.  
 Elev.=154.63 CITY DATUM

NOTE: PROPOSED ELEVATIONS ARE SHOWN IN CITY OF WICHITA VERTICAL DATUM, EXISTING ELEVATIONS ARE SHOWN IN NAD29 VERTICAL DATUM, CONVERSION: NAD29-1187.4=C.O.W.DATUM



ELEVATION (N.G.V.D.) City Datum  
 1338.00  
 151.60



REVISED 7-6-06

Professional Engineering Consultants, P.A.  
 303 S. TOPEKA • WICHITA, KANSAS 67202  
 316-262-2691 • FAX 316-262-3003