

DRAINAGE PLAN AVALON PARK 3RD AN ADDITION TO WICHITA, SEDGWICK COUNTY, KANSAS

SCALE: 1" = 100'
● = 1/2" REBAR W/PEC CAP UNLESS OTHERWISE NOTED

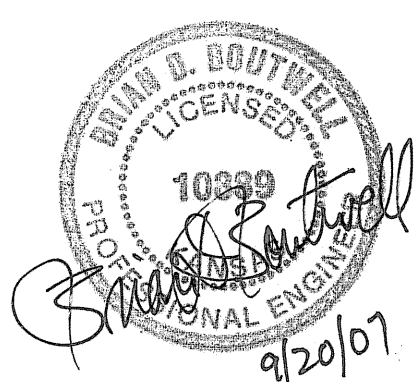
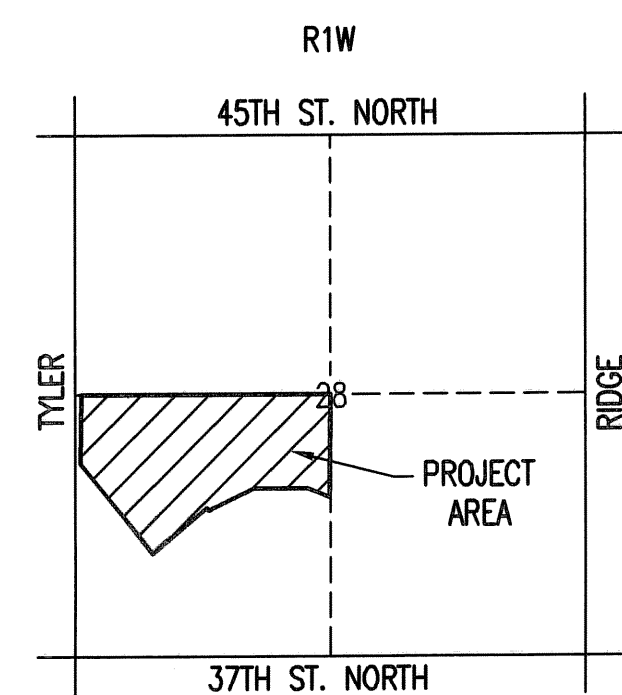
BENCHMARKS:

- BM #55 - R.R. Spike in E. face Power Pole W. side Tyler Rd. at House #3915
Elev.=1340.28 N.G.V.D.
Elev.=152.86 CITY DATUM
- BM #56 - R.R. Spike in E. face Power Pole W. side Tyler Rd. 2nd Pole S. of R.R. Tracks
Elev.=1339.98 N.G.V.D.
Elev.=152.58 CITY DATUM
- BM #57 - Chiseled "d" on S. end RCP at entrance to "the edge" Paintball Adventures. E. side Tyler Rd. between R.R. Tracks and K96 Highway.
Elev.=1340.74 N.G.V.D.
Elev.=153.34 CITY DATUM
- BM #58 - Chiseled "d" on S. end concrete headwall, E. end RCB between Tyler Rd. at 1/2 mile line, S. of K96 Highway.
Elev.=1342.03 N.G.V.D.
Elev.=154.63 CITY DATUM

OWNER: HONGS EQUIPMENT LEASING, INC.
UNPLATTED
ZONED: *SF-20*

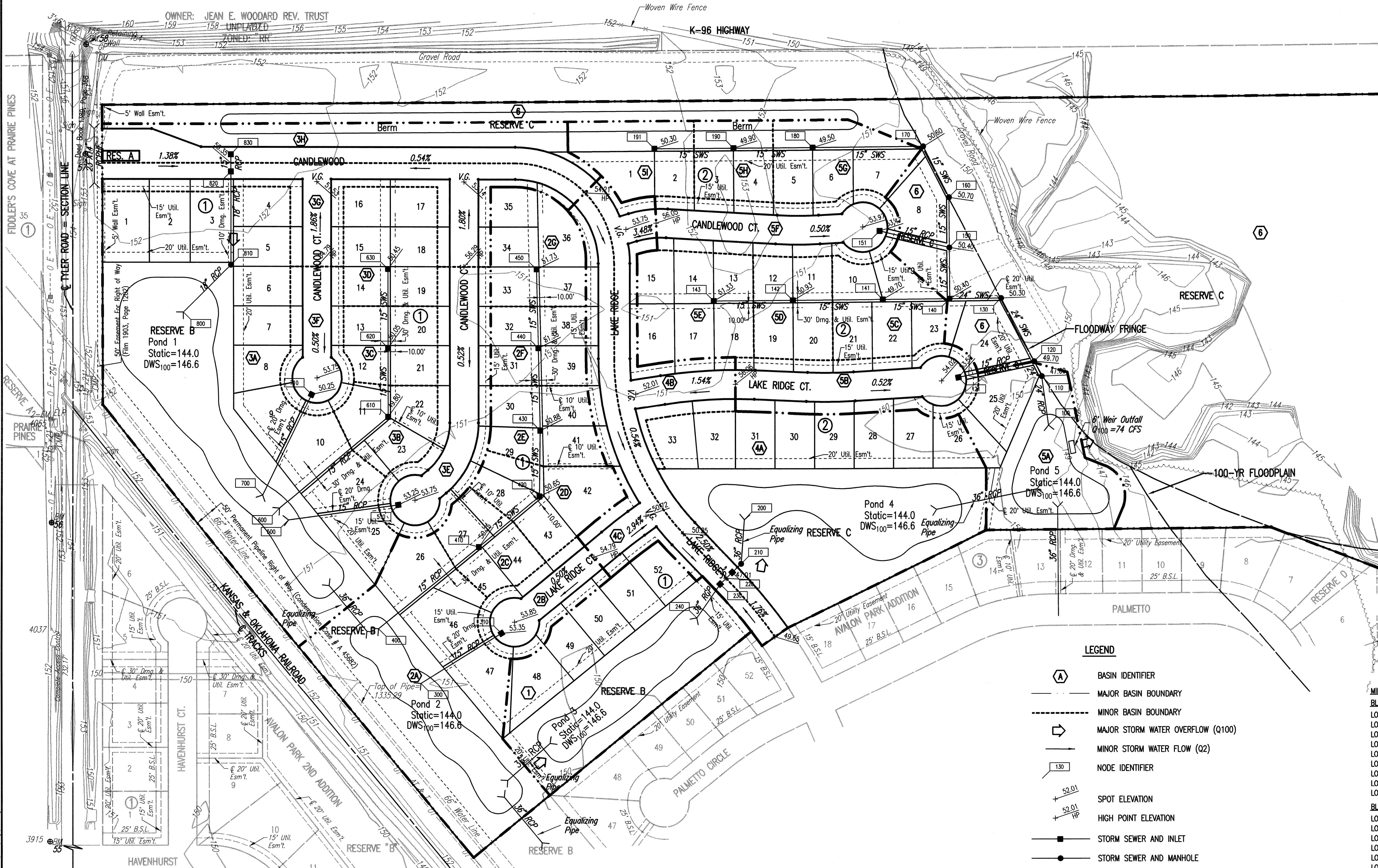
OWNER: COF, L.L.C.
UNPLATTED
ZONED: *SF-20*

ITCHIE INVESTMENT CO. INC.
UNPLATTED
ZONED: *SF-20*



- LEGEND**
- A BASIN IDENTIFIER
 - MAJOR BASIN BOUNDARY
 - - - MINOR BASIN BOUNDARY
 - ➡ MAJOR STORM WATER OVERFLOW (Q100)
 - ➡ MINOR STORM WATER FLOW (Q2)
 - 130 NODE IDENTIFIER
 - + 52.01 SPOT ELEVATION
 - + 52.01 HIGH POINT ELEVATION
 - STORM SEWER AND INLET
 - STORM SEWER AND MANHOLE
- SEE SUPPORTING CALCULATIONS FOR HYDROLOGY

MINIMUM OPENINGS	ELEVATION (N.G.V.D.)	City Datum
BLOCK 1		
LOTS 1-10, 24-26, 46-52	1337.00	149.60
LOTS 11, 22-23	1338.70	151.30
LOTS 12-13, 20-21	1338.85	151.45
LOTS 14-19	1339.25	151.85
LOTS 27, 44-45	1339.00	151.60
LOTS 28, 42-43	1339.45	152.05
LOTS 29-30, 40-41	1339.65	152.25
LOTS 31-32, 38-39	1340.13	152.73
LOTS 33-35, 36-37	1340.53	153.13
BLOCK 2		
LOTS 1-2	1339.10	151.70
LOTS 3-7	1339.00	151.60
LOTS 8-10, 21-23	1338.80	151.40
LOTS 24-33	1337.00	149.60
LOTS 11-12, 19-20	1339.73	152.33
LOTS 13-18	1340.13	152.73



SECTION LINE = 37TH STREET NORTH

Sheet 12-15-2004, 504-34, PM by JMB
Plot Scale 1:100 09-20-2007 10:41:49 AM by JMB
C:\2003\03801\000\dwg\Drainage Plan