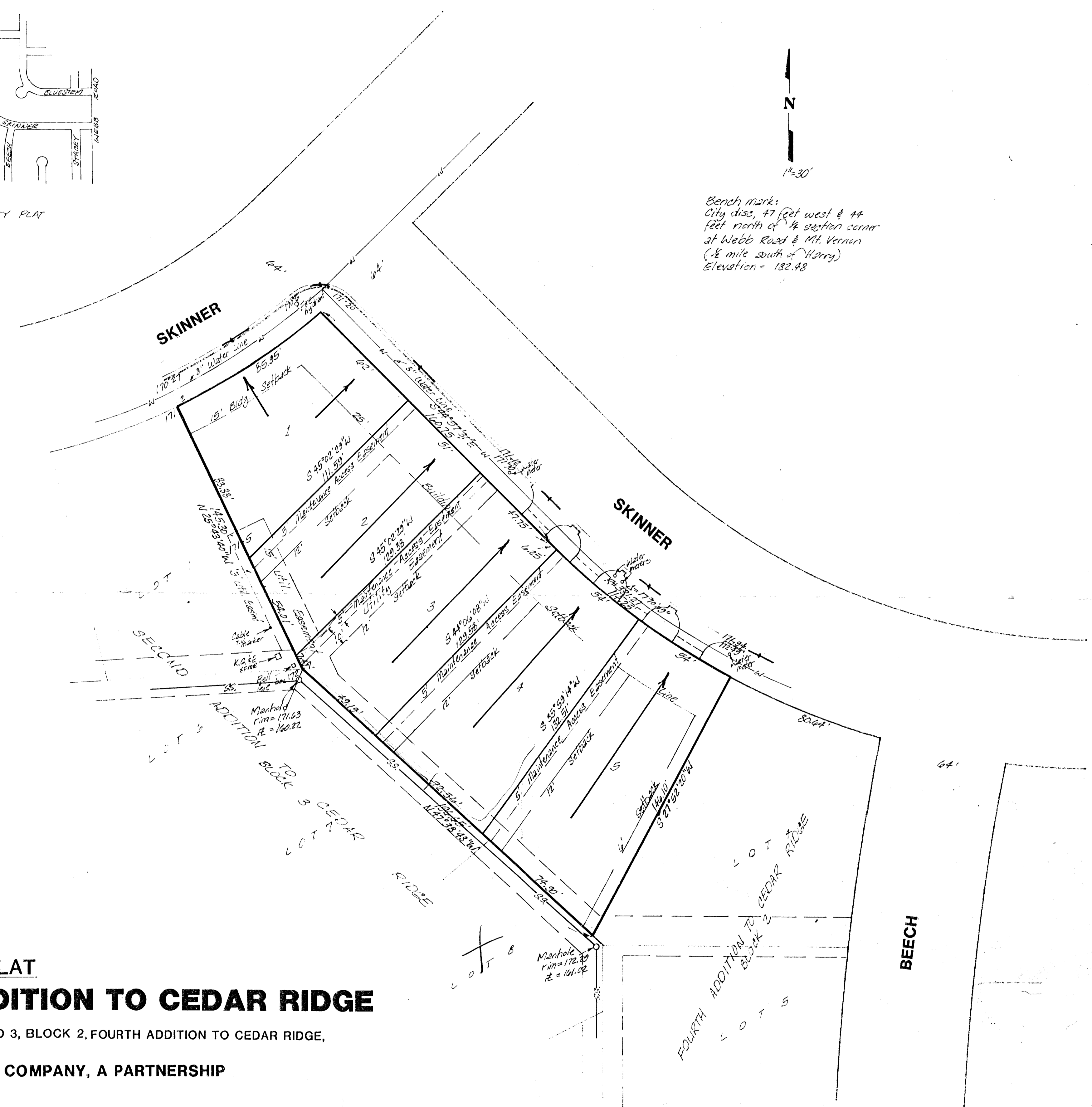


VICINITY PLAT



Bench mark:
City disc, 47 feet west & 44
feet north of 1/4 section corner
at Webb Road & Mt. Vernon
(1/2 mile south of Harry)
Elevation = 182.98



PRELIMINARY PLAT
SIXTH ADDITION TO CEDAR RIDGE

REPLAT OF LOTS 1,2, AND 3, BLOCK 2, FOURTH ADDITION TO CEDAR RIDGE,
WICHITA, KANSAS

OWNER: PEMBROOK COMPANY, A PARTNERSHIP

DRAINAGE PLAN

*Lot will drain to the street pavement
with a 1% slope.*