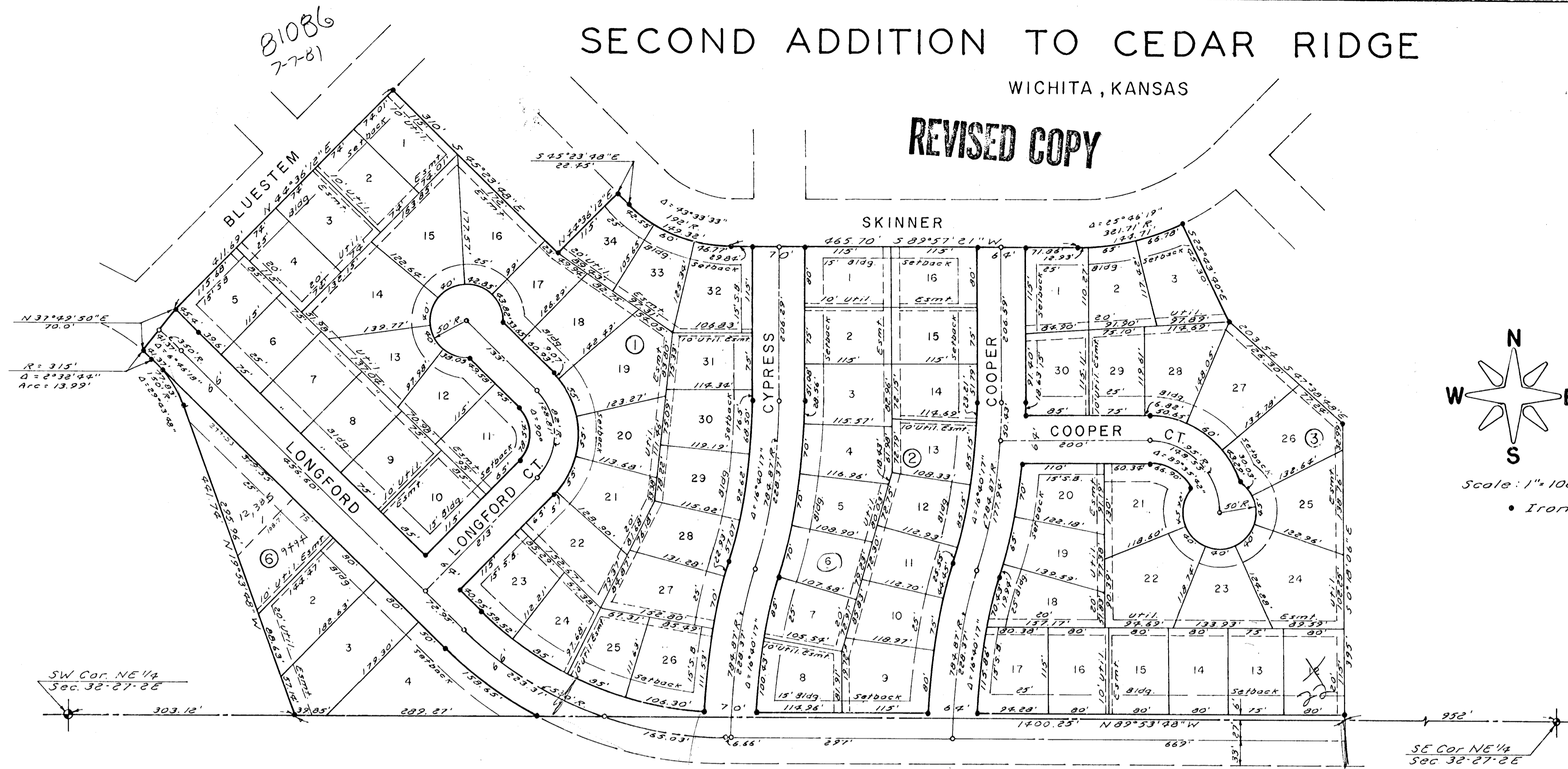


# SECOND ADDITION TO CEDAR RIDGE

WICHITA, KANSAS

REVISED COPY



State of Kansas } S.S.  
Sedgwick County } We, Baughman Company, P.A.,  
Surveyors in aforesaid county and state do hereby  
certify that we have surveyed and platted  
"SECOND ADDITION TO CEDAR RIDGE", Wich-  
ita, Kansas, and that the accompanying plat  
is a true and correct exhibit of the property  
surveyed, described as a replat of Lot 5, Blk.  
4 of Fourth Addition to Cherry Creek Hills,  
Wichita, Kansas, and all that part of the NE  
1/4 of Section 32, T27S, R2E of the 6th P.M.,  
Sedgwick County, Kansas, lying south and east  
of the Fourth Addition to Cherry Creek Hills, Wich-  
ita, Kansas, south of First Addition to Cedar Ridge,  
Wichita, Kansas, east of Hedgecliff Addition, Wichita,  
Kansas, and west of the following described line:  
Beginning at a point on the south line of said NE 1/4,  
said point being 252 feet west of the SE corner  
thereof; thence N 0° 18' 06" W, parallel with the  
east line of said NE 1/4, 325 feet; thence N 47°  
38' 48" W, 203.54 feet; thence N 25° 43' 40" W, 145.30  
feet to the south line of Skinner St. as platted  
in said First Addition to Cedar Ridge.

Date \_\_\_\_\_ Baughman Company, P.A.  
\_\_\_\_\_  
John E. Lundblade Surveyor

Know all men by these presents, that  
we, the undersigned, have caused the land des-  
cribed in the surveyors certificate to be plat-  
ted into lots, blocks and streets to be known  
as "SECOND ADDITION TO CEDAR RIDGE", Wichita,  
Kansas. The easements are hereby granted as  
indicated for the construction and mainte-  
nance of public utilities. The streets are  
hereby dedicated to and for the use of the  
public.

Cherry Creek Development, Inc.  
\_\_\_\_\_  
Clifford A. Nies President

State of Kansas } S.S.  
Sedgwick County } The foregoing instrument  
was acknowledged before me this \_\_\_\_\_ day of  
\_\_\_\_\_, 1981, by Cherry Creek Development,  
Inc., by Clifford A. Nies, President. In testimony  
whereof, I have hereunto set my hand and  
affixed my notarial seal the day and year  
above written.

\_\_\_\_\_  
Notary Public  
My Commission Expires \_\_\_\_\_

This plat of "SECOND ADDITION TO  
CEDAR RIDGE", Wichita, Kansas, has been sub-  
mitted to and approved by the Wichita-Sedg-  
wick County Metropolitan Area Planning Co-  
mmission, Wichita, Kansas. Dated this \_\_\_\_\_  
day of \_\_\_\_\_, 1981.

Wichita-Sedgwick County Metropolitan  
Area Planning Commission

\_\_\_\_\_  
Michael J. Savina Chairman  
\_\_\_\_\_  
Robert A. Lakin Secretary

This plat approved and all dedications  
shown hereon accepted by the Board of City  
Commissioners, Wichita, Kansas, this \_\_\_\_\_  
day of \_\_\_\_\_, 1981.

\_\_\_\_\_  
Robert G. Knight Mayor  
\_\_\_\_\_  
Donald E. Gisick City Clerk

This plat approved and all dedications  
shown hereon accepted by the Board of County  
Commissioners, Sedgwick County, Kansas, this  
\_\_\_\_\_ day of \_\_\_\_\_, 1981.

\_\_\_\_\_  
Donald E. Gregg Chairman  
\_\_\_\_\_  
Tom Scott Commissioner  
\_\_\_\_\_  
Jack Spratt Commissioner  
\_\_\_\_\_  
Dorothy K. White County Clerk

Entered on transfer record this \_\_\_\_\_  
day of \_\_\_\_\_, 1981.

\_\_\_\_\_  
Dorothy K. White County Clerk

State of Kansas } S.S.  
Sedgwick County } This is to certify that  
this plat has been filed for record in the  
Office of the Register of Deeds this \_\_\_\_\_  
day of \_\_\_\_\_, 1981, at \_\_\_\_\_ o'clock, \_\_\_\_\_ M.,  
and is duly recorded.

\_\_\_\_\_  
Doris F. McCarr Register of Deeds  
\_\_\_\_\_  
Ray Kettler Deputy