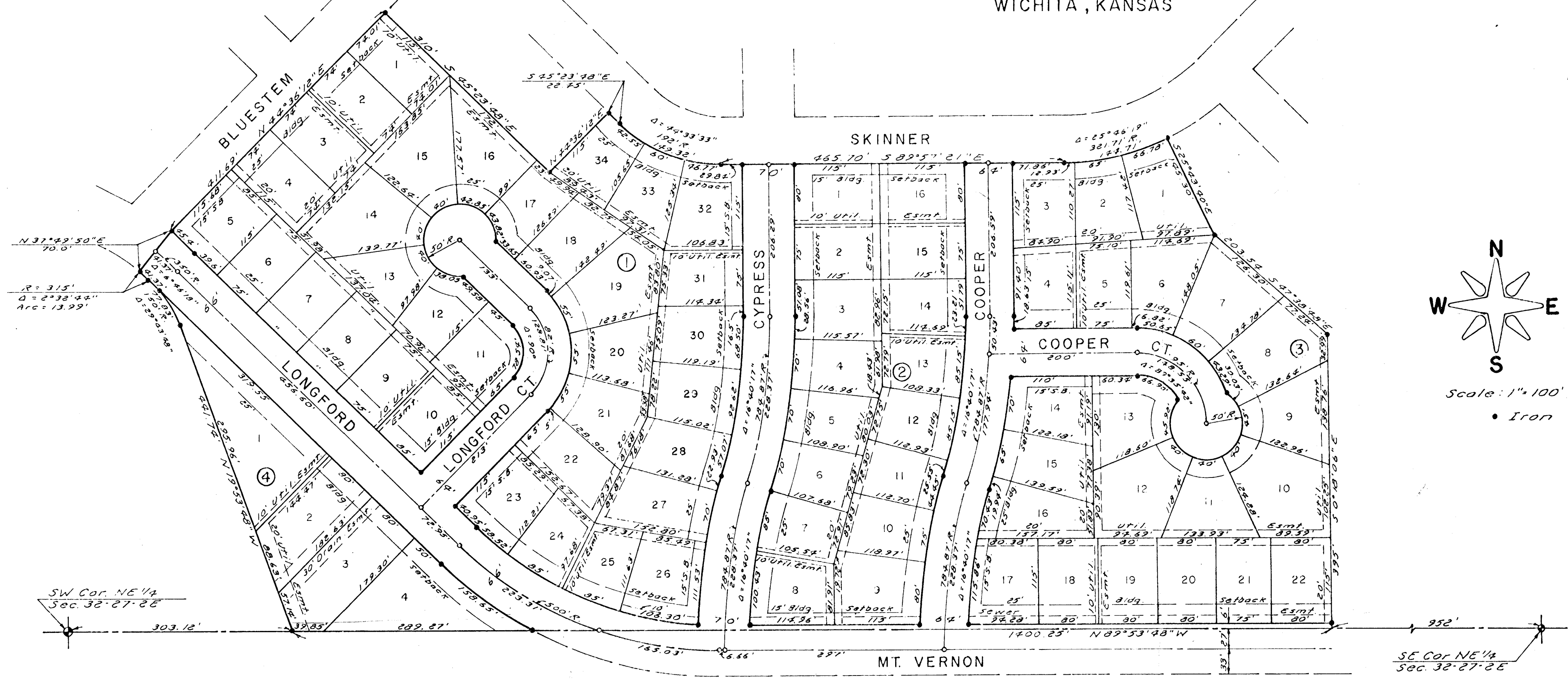


SECOND ADDITION TO CEDAR RIDGE

WICHITA, KANSAS



State of Kansas 3 S. 5. Sedgwick County, We, Baughman Company, P.A. Surveyors in aforesaid county and state do hereby certify that we have surveyed and platted "SECOND ADDITION TO CEDAR RIDGE", Wichita, Kansas, and that the accompanying plat is a true and correct exhibit of the property surveyed, described as a replat of Lot 5, Blk 4 of Fourth Addition to Cherry Creek Hills, Wichita, Kansas, and all that part of the NE 1/4 of Section 32, T21S, R2E of the 6th PM, Sedgwick County, Kansas, lying south and east of the Fourth Addition to Cherry Creek Hills, Wichita, Kansas, east of Hedgecliff Addition, Wichita, Kansas, and west of the following described line: Beginning at a point on the south line of said NE 1/4, said point being 952 feet west of the SE corner thereof; thence N0°18'06"W, parallel with the east line of said NE 1/4, 395 feet; thence N47°38'48"W, 203.54 feet; thence N25°43'40"W, 145.30 feet to the south line of Skinner St. as platted in said First Addition to Cedar Ridge.

Date June 10, 1981 Baughman Company, P.A.
Joh E Lundblad Surveyor
Joh E. Lundblad

Know all men by these presents, that we, the undersigned, have caused the land described in the surveyors certificate to be platted into lots, blocks and streets to be known as "SECOND ADDITION TO CEDAR RIDGE", Wichita, Kansas. The easements are hereby granted as indicated for the construction and maintenance of public utilities. The streets are hereby dedicated to and for the use of the public.

Cherry Creek Development, Inc.
Clifford A. Nies President
Clifford A. Nies

State of Kansas 3 S. 5. Sedgwick County, The foregoing instrument was acknowledged before me this 10th day of JUNE, 1981, by Cherry Creek Development, Inc., by Clifford A. Nies, President. In testimony whereof, I have hereunto set my hand and affixed my notarial seal the day and year above written.

Mark A. Sney Notary Public
Mark A. Sney
 My Commission Expires 5/12/84

This plat of "SECOND ADDITION TO CEDAR RIDGE", Wichita, Kansas, has been submitted to and approved by the Wichita-Sedgwick County Metropolitan Area Planning Commission, Wichita, Kansas. Dated this TEN day of JULY, 1980.

Wichita-Sedgwick County Metropolitan Area Planning Commission
William J. Fossell Chairman
Robert A. Loxin Secretary
William J. Fossell
Robert A. Loxin

This plat approved and all dedications shown hereon accepted by the Board of City Commissioners, Wichita, Kansas, this 10th day of JULY, 1981.

W.C. Brown Mayor
Donald G. Dister City Clerk
W.C. Brown
Donald G. Dister

This plat approved and all dedications shown hereon accepted by the Board of County Commissioners, Sedgwick County, Kansas, this 10th day of JULY, 1981.

Andria G. G. 1981 Chairman
Jack Starnes Commissioner
Pam Scott Commissioner
Carolee K. White County Clerk
Andria G. G. 1981
Jack Starnes
Pam Scott
Carolee K. White

Entered on transfer record this 21 day of July, 1981.

Carolee K. White County Clerk
Carolee K. White

State of Kansas 3 S. 5. Sedgwick County, This is to certify that this plat has been filed for record in the Office of the Register of Deeds this 10th day of JULY, 1981, at 11 o'clock, A.M. and is duly recorded.

Bella R. McCart Register of Deeds
Pat Kettler Deputy
Bella R. McCart
Pat Kettler

