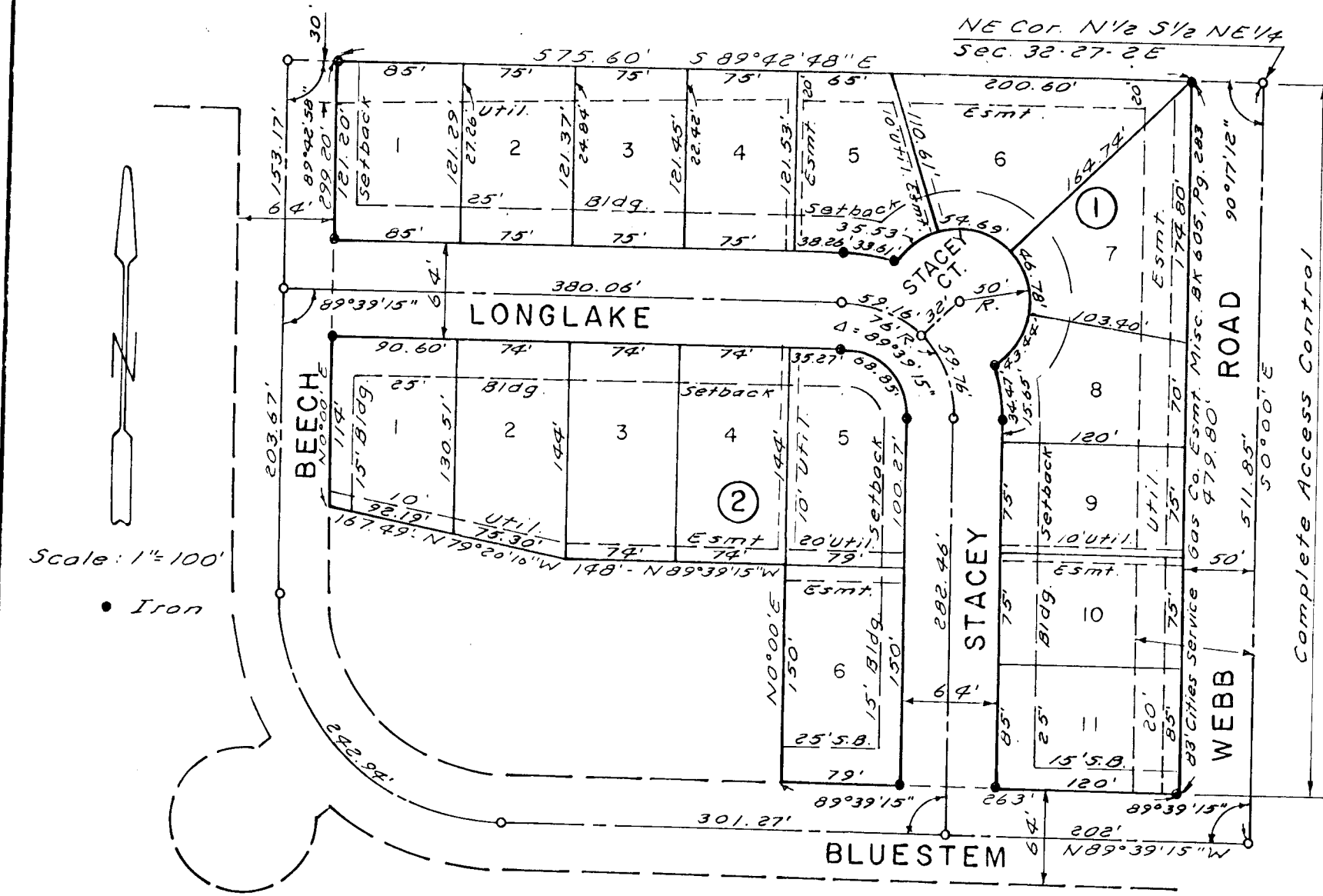


THIRD ADDITION TO CEDAR RIDGE

WICHITA, KANSAS



This plat of "THIRD ADDITION TO CEDAR RIDGE", Wichita, Kansas, has been submitted to and approved by the Wichita-Sedgwick County Metropolitan Area Planning Commission, Wichita, Kansas. Dated this 23rd day of April, 1981.

Wichita-Sedgwick County Metropolitan Area Planning Commission

Clifford A. Nies Chairman
Robert A. Larkin Secretary

This plat approved and all dedications shown hereon accepted by the Board of City Commissioners, Wichita, Kansas, this day of April, 1981.

Donald C. Bixick Mayor
 Donald C. Bixick City Clerk

This plat approved and all dedications shown hereon accepted by the Board of County Commissioners, Sedgwick County, Kansas, this day of April, 1981.

Donald C. Bragg Chairman
Jack Spratt Commissioner
Yam Scott Commissioner
Dorothy K. White County Clerk

Entered on transfer record this day of April, 1981.

Dorothy K. White County Clerk

State of Kansas } S.S. This is to certify that Sedgwick County } this plat has been filed for record in the Office on the Register of Deeds this day of April, 1981, at o'clock, P.M., and is duly recorded.

Bette F. McCort Register of Deeds
Pat Kattler Deputy

State of Kansas } S.S. We, Baughman Company, P.A. Sedgwick County } Surveyors in aforesaid county and state, do hereby certify that we have surveyed and platted "THIRD ADDITION TO CEDAR RIDGE", Wichita, Kansas, and that the accompanying plat is a true and correct exhibit of the property surveyed, described as a replat of Lots 1 thru 6, Blk. A, all of Block 5, and Longlake, Stacey and Beech Ct. as platted in First Addition To Cedar Ridge, Wichita, Kansas.

Date Apr 24, 1981 Baughman Company, P.A.

John E. Lundblade Surveyor
Vann C. Lundblade

Know all men by these presents, that we, the undersigned, have caused the land described in the surveyors certificate to be platted into lots, blocks and streets to be known as "THIRD ADDITION TO CEDAR RIDGE", Wichita, Kansas. The easements are hereby granted as indicated for the construction and maintenance of public utilities. The streets are hereby dedicated to and for the use of the public. All abutters rights of access to Webb Rd. over and across the east line of Blk. 1 are hereby granted to the City of Wichita, Kansas.

Clifford A. Nies Betty J. Nies

State of Kansas } S.S. The foregoing instrument Sedgwick County } was acknowledged before me this 14th day of May, 1981, by Clifford A. Nies and Betty J. Nies, his wife.

Mark A. Sawyer Notary Public
 My Commission Expires 5/12/88

We, the East Side Bank and Trust of Wichita, Kansas, holder of a mortgage on part of the above described property, do hereby consent to the plat of "THIRD ADDITION TO CEDAR RIDGE"

East Side Bank and Trust
John W. ... President

State of Kansas } S.S. The foregoing instrument was Sedgwick County } acknowledged before me this day of 1981, by the East Side Bank and Trust by

Notary Public
 My Commission Expires