

This layout was done by
Doris J. Schrader
Sanitary Sewer Design Engineer
on February 17, 1931

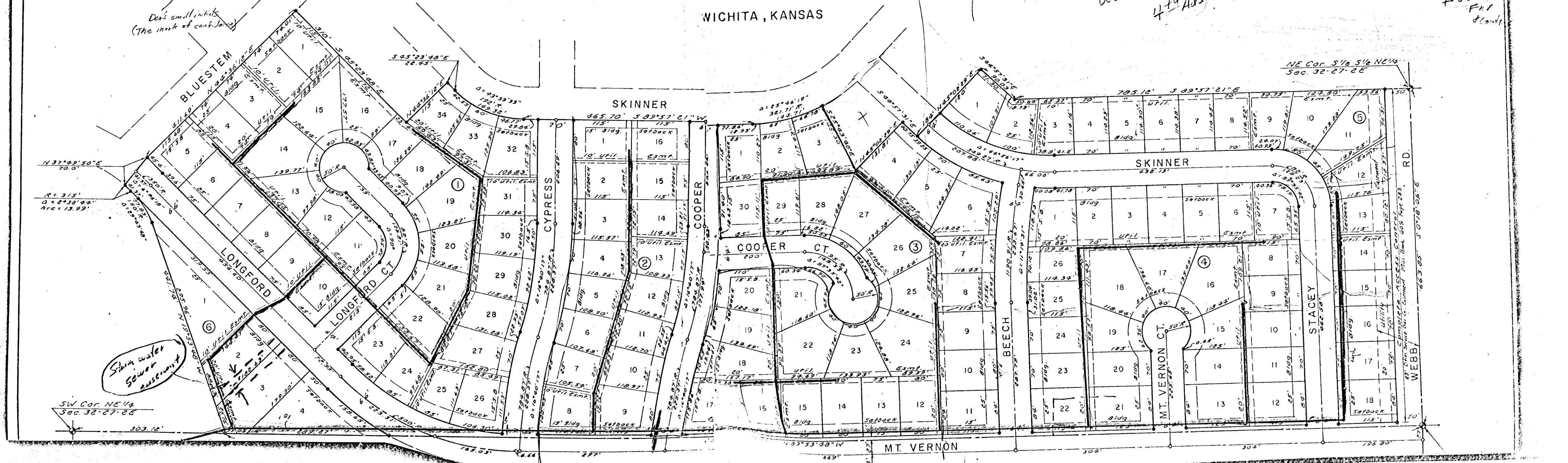
Doris small initials
(The mark of confidence)

SECOND ADDITION TO CEDAR RIDGE

WICHITA, KANSAS

use new plot
4th Addition Addn to Cedar Ridge

M.H. = 2000
8' P.I.
+ 25' 7 1/2'
F.H.I.
8' Cont.



SW Cor. NE 1/4
Sec. 32-27-26

NE Cor. S 1/4 S 1/4 NE 1/4
Sec. 32-27-26

Storm water
sewer easement

33" diam. concrete pipe access control
This block 605' Apr 28, 1931
43" diam. concrete pipe access control
This block 605' Apr 28, 1931