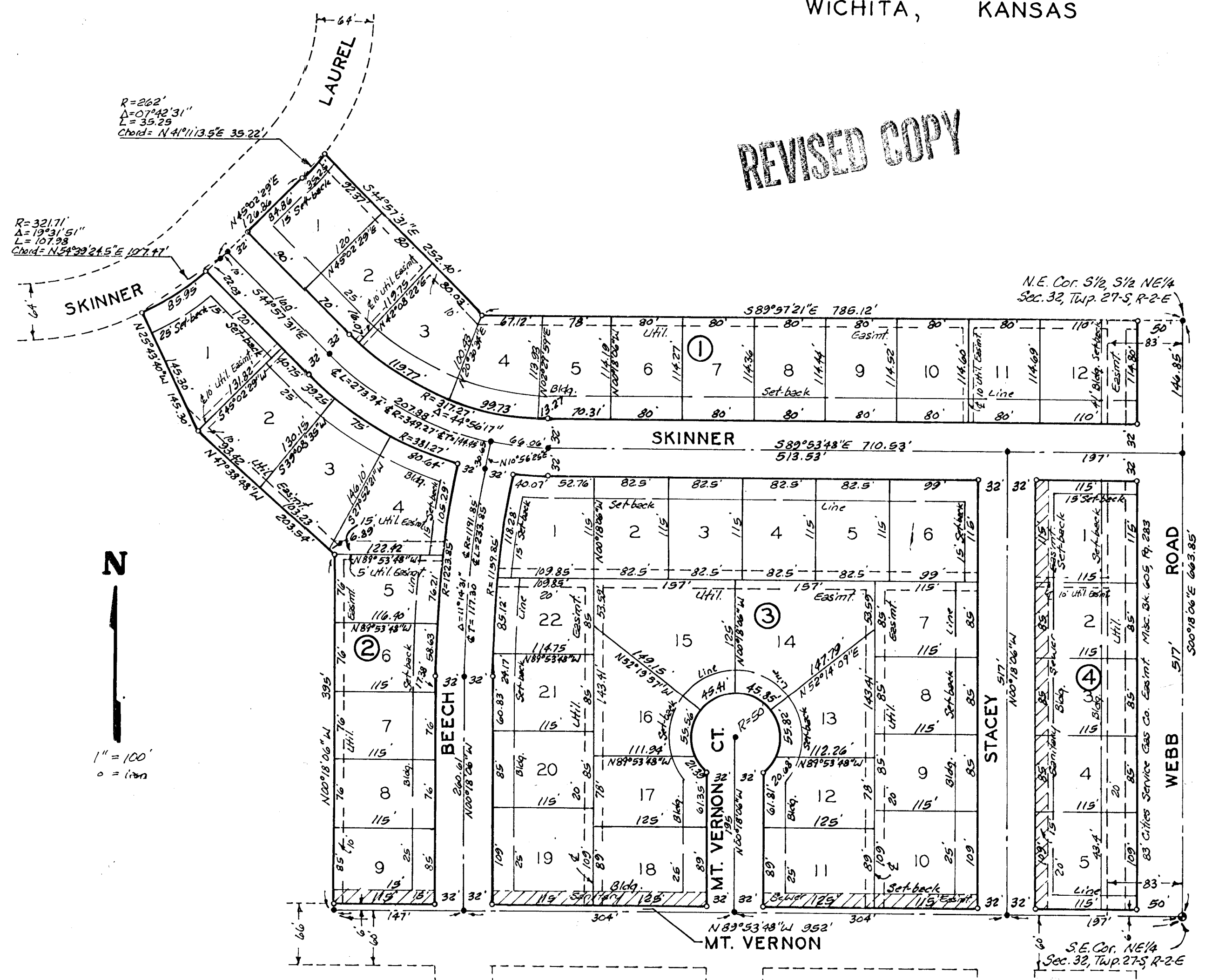


# FOURTH ADDITION TO CEDAR RIDGE

WICHITA, KANSAS

REVISED COPY



State of Kansas? S.S. We, Baughman Company, P.A., Surveyors in aforesaid county and state do hereby certify that we have surveyed and platted "FOURTH ADDITION TO CEDAR RIDGE" Wichita, Kansas and that the accompanying plat is a true and correct exhibit of the property surveyed, described as and being a replat of Lot 1, Block 2 and lots 1 and 2, Block 3 and part of Skinner as platted in First Addition to Cedar Ridge, Wichita, Kansas and part of the S 1/2 of the NE 1/4 of Sec. 32, Twp. 27-S, R-2-E of the 6th P.M., Sedgewick County, Kansas, all being described as follows:

Beginning at the S.E. corner of said NE 1/4; thence N 89° 53' 48" W, along the south line of said NE 1/4, 95.2 feet; thence N 20° 18' 06" W, parallel with the east line of said NE 1/4, 395 feet; thence N 47° 38' 48" W, 203.54 feet; thence N 25° 43' 40" W, 145.30 feet to a point on a curve to the left, having a radius of 321.71 feet, a central angle of 19° 13' 51" and an arc length of 107.98 feet; thence northeasterly, along said curve, having a chord bearing N 54° 39' 24.5" E, 107.47 feet to the point of tangency of said curve; thence N 45° 02' 29" E, along the tangent of said curve, 126.86 feet to the point of curvature of a curve to the left, having a radius of 262 feet; thence northeasterly along said curve, through a central angle of 07° 42' 31", an arc distance of 35.25 feet and having a chord bearing N 41° 11' 13.5" E, 35.22 feet; thence S 44° 57' 31" E, 252.40 feet to a point on the north line of the S 1/2 of the NE 1/4 of said NE 1/4; thence S 89° 57' 21" E, along the north line of the S 1/2 of the NE 1/4 of said NE 1/4, 785.12 feet to the NE corner thereof; thence S 00° 19' 06" E, 663.85 feet to the place of beginning. Skinner Street being vacated by virtue of K.S.A. 12-512(c).

Baughman Company, P.A.

William L. Kerber, Surveyor

1-19-84  
1984

This plat of "FOURTH ADDITION TO CEDAR RIDGE" Wichita, Kansas, has been submitted to and approved by the Wichita-Sedgewick County Metropolitan Area Planning Commission, Wichita, Kansas. Dated this 17th day of November, 1983.

Wichita-Sedgewick County Metropolitan Area Planning Commission.  
 Robert K. Chisholm, Chairman  
 Robert H. Lakin, Secretary



This plat approved and all dedications shown hereon accepted by the Board of Commissioners of Wichita, Kansas, this day of 1984.

Margabe Wright, Mayor  
 Donald C. Giesick, City Clerk

This plat approved and all dedications shown hereon, accepted by the Board of Commissioners of Sedgewick County, Kansas, this day of 1984.

Jack Spratt, Chairman  
 Donald E. Gragg, Commissioner  
 Tom Scott, Commissioner  
 Dorothy K. White, County Clerk

Entered on transfer record this day of 1984.

Dorothy K. White, County Clerk

State of Kansas? S.S. This is to certify that this plat has been filed for record in the office of the Register of Deeds, this day of 1984, at o'clock M; and is duly recorded.

Bette F. Mccart, Register of Deeds  
 Pat Kettler, Deputy

Know all men by these presents, that we the undersigned, have caused the land described in the surveyors certificate to be platted into lots, blocks and streets to be known as "FOURTH ADDITION TO CEDAR RIDGE" Wichita, Kansas. Easements are hereby granted as indicated for the construction and maintenance of all public utilities. The streets are hereby dedicated to and for the use of the public. All abutters rights of access to or from Webb Rd. over and across the east line of lot 12, Block 1, and the east line of lots 1, 2, 3, 4 and 5, Block 2, are hereby granted to the city of Wichita, Kansas.

Cherry Creek Development, Inc.  
 Clifford A. Nies, President  
 Stephen Russell, President

State of Kansas? S.S. The foregoing instrument was acknowledged before me, this 2nd day of February, 1984, by Clifford A. Nies, President of Cherry Creek Development, Inc., on behalf of the corporation and by Stephen Russell, President of Red Oaks, Inc., on behalf of the corporation.

Mark A. Sawyer, Notary Public  
 My Appt. Exp. 12/04/1984