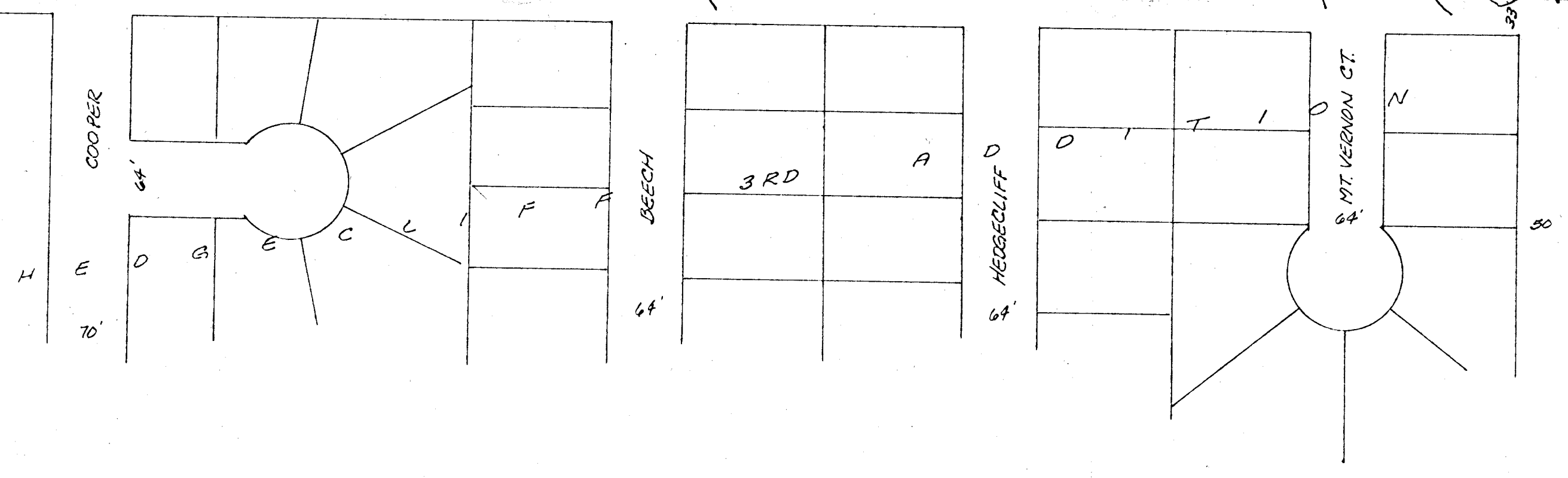
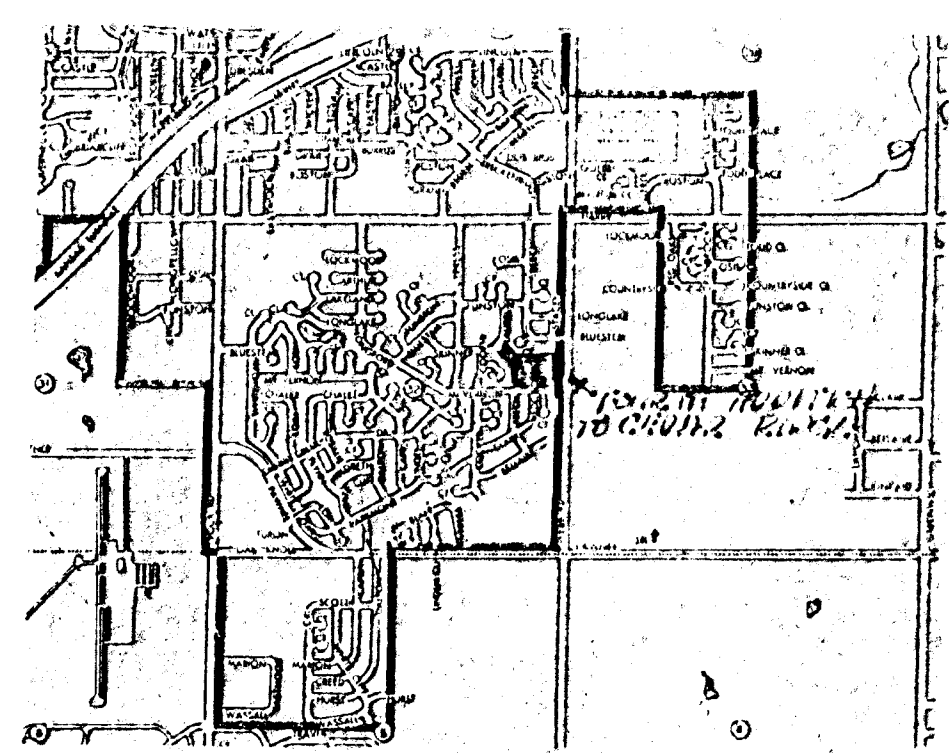
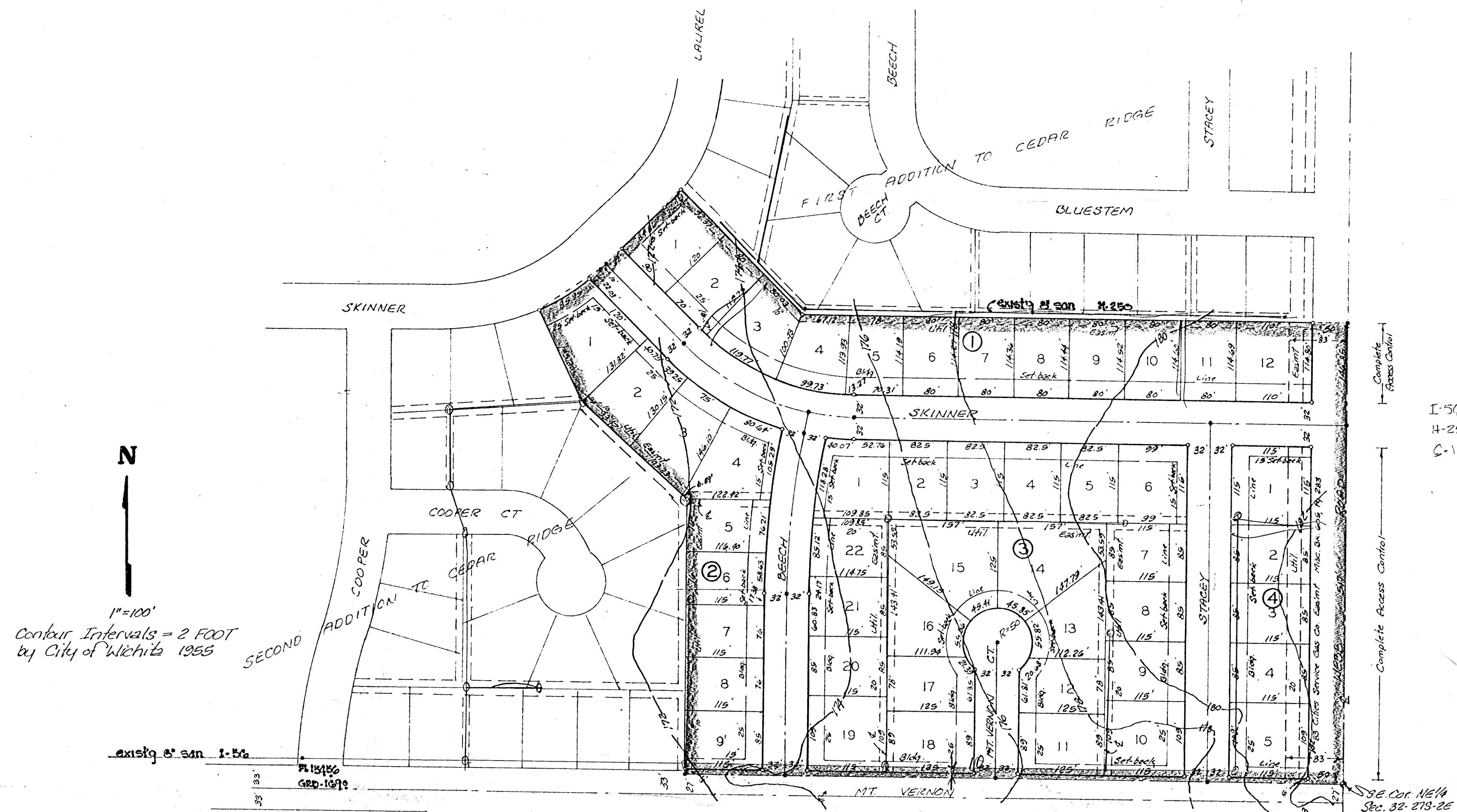


REVISED PRELIMINARY PLAT FOURTH ADDITION TO CEDAR RIDGE

PART OF THE NE 1/4 OF SEC. 32, TWP. 27-S, R-2-E AND A REPLAT OF LOT 1, BLOCK 2,
AND LOTS 1 AND 2, BLOCK 3 AND PART OF SKINNER, IN FIRST ADDITION TO CEDAR RIDGE

OWNER: CHERRY CREEK DEV., INC. CLIFFORD NIES, PRESIDENT
CONTRACT PURCHASER: RED OAKS, INC. PETE RUSSELL, PRESIDENT



Complete Access Center
I-54
H-250
C-167
Complete Access Center
S.E. Cor. NE 1/4
Sec. 32-27S-2E