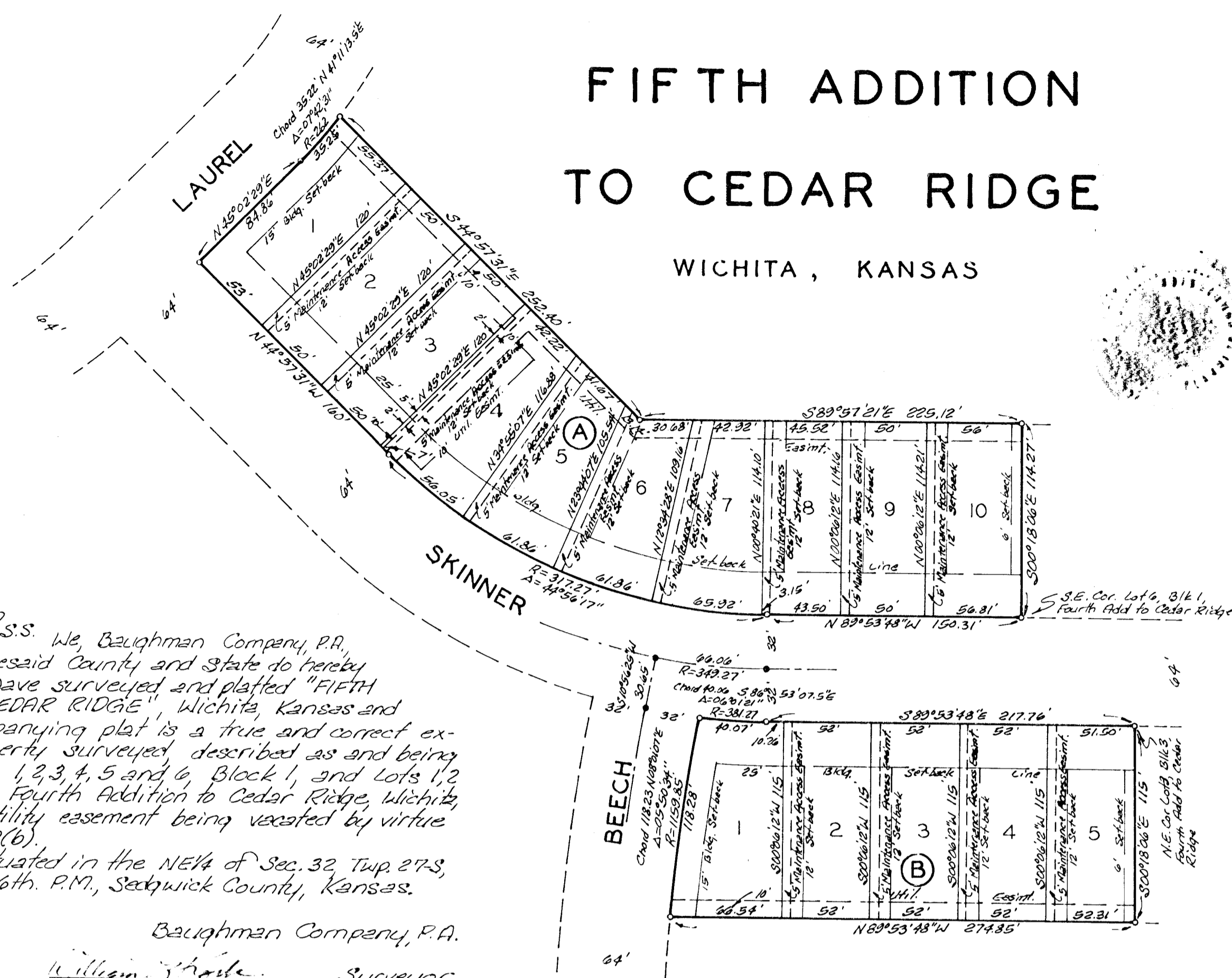


# FIFTH ADDITION TO CEDAR RIDGE

WICHITA, KANSAS



State of Kansas }  
Sedgewick County } s.s. We, Baughman Company, P.A.,  
Surveyors in aforesaid County and State do hereby  
certify that we have surveyed and platted "FIFTH  
ADDITION TO CEDAR RIDGE" Wichita, Kansas and  
that the accompanying plat is a true and correct ex-  
hibit of the property surveyed, described as and being  
a replat of Lots 1, 2, 3, 4, 5 and 6, Block 1, and Lots 1, 2  
and 3, Block 3, Fourth Addition to Cedar Ridge, Wichita,  
Kansas. The utility easement being vacated by virtue  
of K.S.A. 12-512(b).  
All being situated in the NE 1/4 of Sec. 32, Twp. 27 S.,  
R. 2-E of the 6th. P.M., Sedgewick County, Kansas.

1/2/88  
Date  
Baughman Company, P.A.  
William L. Korber, Surveyor

Know all men by these presents  
that we, the undersigned, have caused the land describ-  
ed in the surveyors certificate to be platted into Lots  
and Blocks to be known as "FIFTH ADDITION TO CEDAR  
RIDGE", Wichita, Kansas. The utility easements are  
hereby granted for the construction and maintenance  
of all public utilities. The maintenance access  
easement is hereby granted for access by the adjoining  
property owner for maintenance of their structures and  
roof overhang encroachment. The westerly 2' of said easement  
as shown on Lot 4, Block A, reserved for roof overhang en-  
croachment.

Pembroke Company, a Partnership  
Buchanan Homes, Inc., Tim Buchanan, President  
Messner-Roberts, Inc., R. Larry Roberts, President

State of Kansas }  
Sedgewick County } s.s. The foregoing instrument ack-  
nowledged before me, this 21th day of January,  
1988, by Tim Buchanan, President of Buchanan Homes,  
Inc. and by R. Larry Roberts, President of  
Messner-Roberts, Inc., Partners of Pembroke  
Company, a Partnership, on behalf of the partnership.  
Mark A. Sawyer, Notary Public  
My Appt. Exp. 12 MAY 1988

We, the undersigned, holders of a  
mortgage on the above described property do hereby  
consent to this plat of "FIFTH ADDITION TO CEDAR  
RIDGE", Wichita, Kansas  
American Savings Association of Kansas  
Gary E. Read, Senior Vice-Pres.

State of Kansas }  
Sedgewick County } s.s. The foregoing instrument acknowl-  
edged before me, this 21th day of January, 1988,  
by Gary E. Read, Senior Vice-Pres. of American  
Savings Association of Kansas, on behalf of the  
corporation.  
Mark A. Sawyer, Notary Public  
My Appt. Exp. 12 May 1988

This plat of "FIFTH ADDITION TO  
CEDAR RIDGE", Wichita, Kansas, has been submitted  
to and approved by the Wichita-Sedgewick County  
Metropolitan Area Planning Commission, Wichita, Kansas.  
Dated this 4th day of January, 1988.

Wichita-Sedgewick County Metropolitan Area Planning Commission  
William J. Gogbel, Chairman  
Michael E. Lindebak, Secretary

This plat approved and all ded-  
ications shown hereon accepted by the Board of  
Commissioners of the City of Wichita, Kansas,  
this 4th day of January, 1988.

Robert C. Brown, Mayor  
Donald C. Wisick, City Clerk

Entered on transfer record this  
\_\_\_\_\_ day of \_\_\_\_\_, 1988.  
Don Wright, County Clerk

State of Kansas }  
Sedgewick County } s.s. This is to certify that this plat  
has been filed for record in the office of the  
Register of Deeds this \_\_\_\_\_ day of \_\_\_\_\_, 1988,  
at \_\_\_\_\_ o'clock \_\_\_\_\_ M.; and is duly recorded.  
Pat Kettler, Registered Deeds  
Ed Reza, Deputy