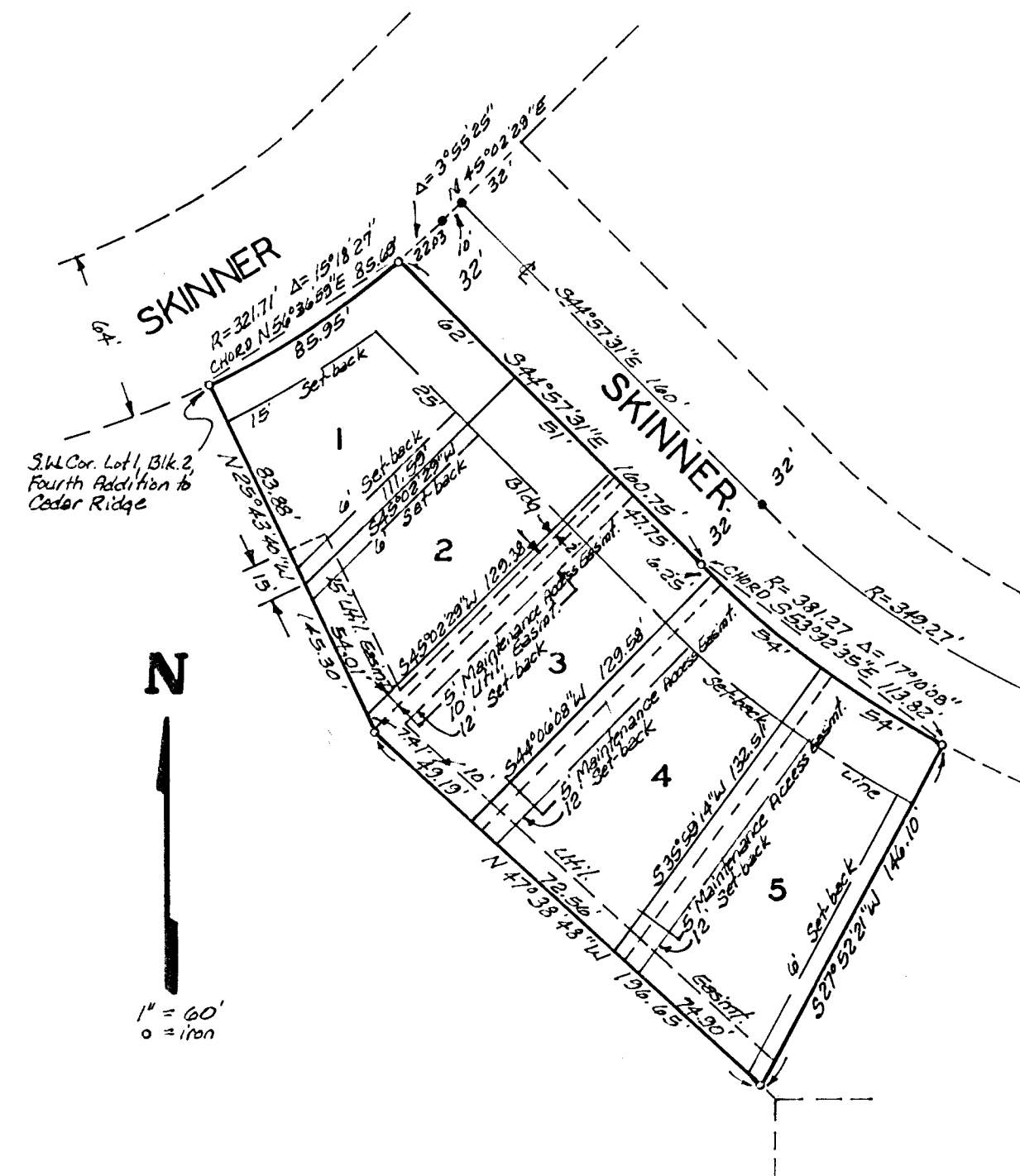


# SIXTH ADDITION TO CEDAR RIDGE

WICHITA, KANSAS.



State of Kansas } S.S. We, Baughman Company, P.A., Surveyors in aforesaid county and state do hereby certify that we have surveyed and platted "SIXTH ADDITION TO CEDAR RIDGE" Wichita, Kansas and that the accompanying plat is a true and correct exhibit of the property surveyed, described as and being a replat of Lots 1, 2 and 3, Block 2, Fourth Addition to Cedar Ridge, Wichita, Kansas.

All being situated in the NE1/4 of Sec. 32, T4P. 27-S, R-2-E of the 6th. P.M., Sedquick County, Kansas.

Building setback lines being vacated by virtue of K.S.A. 12-512(d).

Baughman Company, P.A.  
 Date 28 Oct 1986 Surveyor  
 Mark Nrsavoff

This plat of "SIXTH ADDITION TO CEDAR RIDGE" Wichita, Kansas has been submitted to and approved by the Wichita-Sedquick County Metropolitan Area Planning Commission, Wichita, Kansas. Dated this 18th day of September, 1986.

Wichita-Sedquick County Metropolitan Area Planning Commission.  
 Chairman  
 Secretary  
 Michael E. Underbak

This plat approved and all dedications shown hereon accepted by the Board of Commissioners of the City of Wichita, Kansas, this 19th day of October, 1986.

Mayor  
 City Clerk  
 Donald O. Giesek

Entered on transfer record this 19th day of October, 1986.  
 County Clerk  
 Tom Wright

State of Kansas } S.S. This is to certify that this plat has been filed for record in the office of the Register of Deeds, this 19th day of October, 1986, at 10 o'clock A.M.; and is duly recorded.

Register of Deeds  
 Deputy

Know all men by these presents that we, the undersigned, have caused the land described in the surveyors certificate to be platted into Lots to be known as "SIXTH ADDITION TO CEDAR RIDGE", Wichita, Kansas. The utility easements are hereby granted as indicated for the construction and maintenance of all public utilities. The maintenance access easements are hereby granted for access by the adjoining property owner for maintenance of their structure and for roof overhang encroachment. (The westerly 2 feet of said easement as shown on Lot 3, is reserved for roof overhang encroachment.)

Pembrook Company, a Partnership  
 Partner  
 Buchanan Homes, Inc. / Tim Buchanan, President  
 Partner  
 Messner-Roberts, Inc. / R. Larry Roberts, President

State of Kansas } S.S. The foregoing instrument acknowledged before me, this 28th day of October, 1986, by Tim Buchanan, President of Buchanan Homes, Inc. and by R. Larry Roberts, President of Messner-Roberts, Inc., Partners of Pembrook Company, a Partnership, on behalf of the partnership

Notary Public  
 My Appt. Exp. 1-12-87

We, the undersigned holders of a mortgage on the above described property do hereby consent to this plat of "SIXTH ADDITION TO CEDAR RIDGE", Wichita, Kansas.

American Savings Association of Kansas.  
 Vice-Pres.  
 Samuel E. Trummel

State of Kansas } S.S. The foregoing instrument acknowledged before me, this 19th day of October, 1986, by Samuel E. Trummel Vice-President of American Savings Association of Kansas, on behalf of the corporation.

Notary Public  
 My Appt. Exp. \_\_\_\_\_