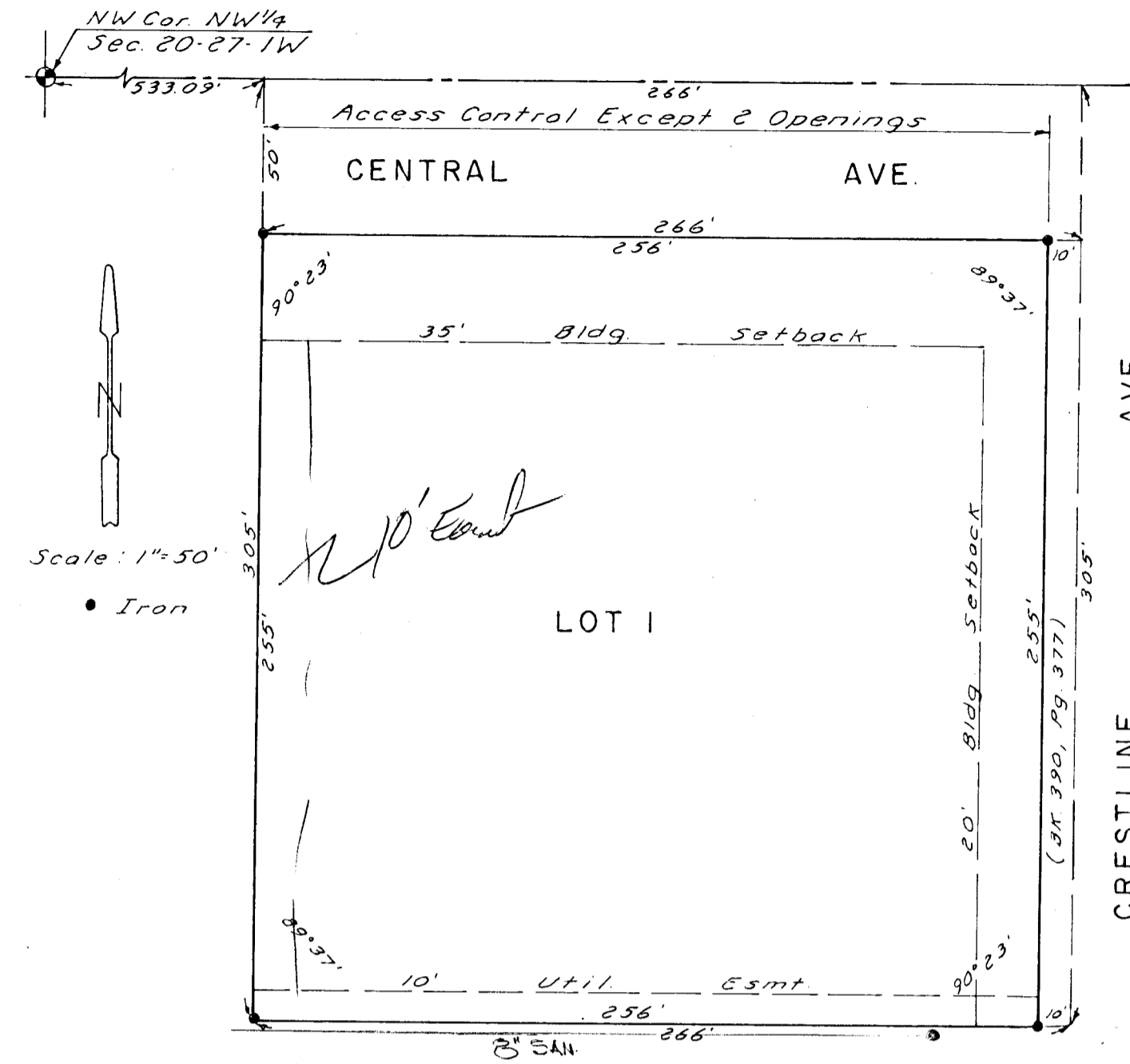


# CENCREST ADDITION

WICHITA, KANSAS



State of Kansas } S.S. We, Baughman Company, P.A.,  
Sedgwick County }  
Surveyors in aforesaid county and state, do hereby  
certify that we have surveyed and platted  
"CENCREST ADDITION", Wichita, Kansas, and that  
the accompanying plat is a true and correct  
exhibit of the property surveyed described as  
the east 276 feet of the west 799.09 feet of  
the north 305 feet of the NW 1/4 of Section  
20, T-27S, R-1W, Sedgwick County, Kansas, except  
the east 10 feet taken for Crestline and that  
part taken for Central.

Date \_\_\_\_\_ Baughman Company, P.A.

\_\_\_\_\_  
John E. Lundblada Surveyor

Know all men by these presents that  
we, the undersigned, have caused the land  
described in the surveyors certificate to  
be platted into a lot and street to be known  
as "CENCREST ADDITION", Wichita, Kansas.  
The easement is hereby granted as indicated  
for the construction and maintenance of  
public utilities. The street is hereby dedicated  
to and for the use of the public. All abutters  
rights of access to Central Ave are hereby  
granted to the City of Wichita, Kansas, ex-  
cept, however, that Lot I shall have access  
to Central Ave at two locations, said locat-  
ions to be determined by the City Engineer.

\_\_\_\_\_  
Harley J. Voth

\_\_\_\_\_  
Geraldine A. Voth

State of Kansas } S.S. The foregoing instrument  
Sedgwick County }  
was acknowledged before me this \_\_\_\_\_  
day of \_\_\_\_\_, 1980, by Harley J. Voth and  
Geraldine A. Voth, his wife. In testimony  
whereof, I have hereunto set my hand and  
affixed my notarial seal the day and year  
above written.

\_\_\_\_\_  
Notary Public  
My Commission Expires \_\_\_\_\_

This plat of "CENCREST ADDITION",  
Wichita, Kansas, has been submitted to and  
approved by the Wichita-Sedgwick County  
Metropolitan Area Planning Commission,  
Wichita, Kansas. Dated this \_\_\_\_\_ day of  
\_\_\_\_\_, 1980.

Wichita-Sedgwick County Metropolitan  
Area Planning Commission

\_\_\_\_\_  
William J. Goebel Chairman

\_\_\_\_\_  
Robert A. Lorin Secretary

This plat approved and all dedications  
shown hereon accepted by the Board of City  
Commissioners, Wichita, Kansas, this \_\_\_\_\_ day  
of \_\_\_\_\_, 1980.

\_\_\_\_\_  
Tony Casado Mayor

\_\_\_\_\_  
Donald C. Bizick City Clerk

This plat approved and all dedications  
shown hereon accepted by the Board of County  
Commissioners, Sedgwick County, Kansas, this  
\_\_\_\_\_ day of \_\_\_\_\_, 1980.

\_\_\_\_\_  
Tom Scott Chairman

\_\_\_\_\_  
Everett Patrick Commissioner

\_\_\_\_\_  
Donald E. Gragg Commissioner

\_\_\_\_\_  
Dorothy K. White County Clerk

Entered on transfer record this \_\_\_\_\_  
day of \_\_\_\_\_, 1980.

\_\_\_\_\_  
Dorothy K. White County Clerk

State of Kansas } S.S. This is to certify that  
Sedgwick County }  
this plat has been filed for record in the  
Office of the Register of Deeds this \_\_\_\_\_  
day of \_\_\_\_\_, 1980, at \_\_\_\_\_ o'clock, \_\_\_\_\_ M.,  
and is duly recorded.

\_\_\_\_\_  
Betty E. McCart Register of Deeds

\_\_\_\_\_  
Pat Kettler Deputy