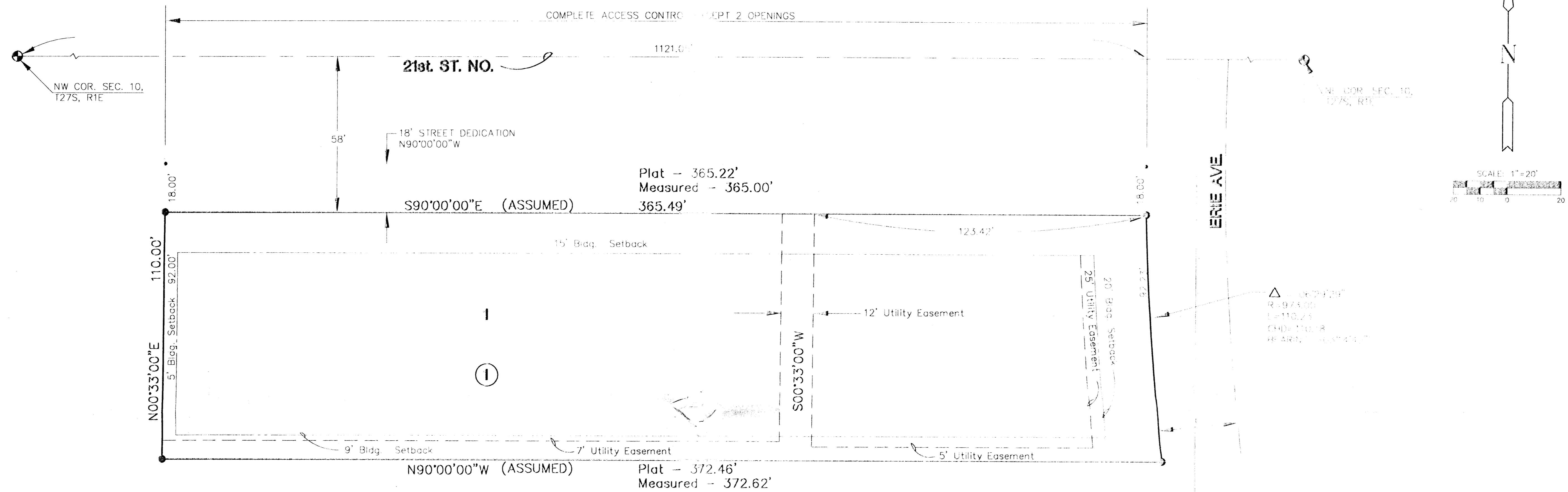


FINAL PLAT

CENTER FOR HEALTH AND WELLNESS ADDITION

AN ADDITION TO WICHITA, SEDGWICK COUNTY, KANSAS



I, Gregory J. Allison, a Civil Engineer and Registered Land Surveyor in Kansas, do hereby certify that I have been in responsible charge of surveying and platting of "CENTER FOR HEALTH AND WELLNESS ADDITION", an addition to Wichita, Sedgwick County, Kansas, into lots and a block, the same being accurately set forth in the accompanying plat and described herein.

A replat of Lots 14 thru 19, Block 4, SHADYBROOK, an addition to Wichita, Sedgwick County, Kansas.

All lots, blocks, easements, building setbacks lying within the above described property are hereby vacated and replatted by virtue of K.S.A. 12-512(b).

I hereby certify that the details of this plat are correct to the best of my knowledge and belief this 27TH day of JANUARY, 1998.

Gregory J. Allison, P.E., R.L.S. #1257
Mid-Kansas Engineering Consultants, Inc.
411 North Webb Road
Wichita, KS 67206

Know all men by these presents that we the undersigned property owners of the lands as above set forth in the Civil Engineer's and Registered Land Surveyor's Certificate, have caused the same to be surveyed and platted into a lot and a block, the same to be known as "CENTER FOR HEALTH AND WELLNESS ADDITION" an addition to Wichita, Sedgwick County, Kansas. Easements for the construction and maintenance of public utilities and drainage as indicated on the accompanying plat are hereby granted.

All egress right of access to or from Lot 1 over and across the south line to 21st Street North are hereby granted, to the approval of the governing body, provided however Lot 1 shall have access to 21st Street at two locations as indicated on face of plat and as approved by the City Engineer.

The City of Wichita:

Bob Knight, Mayor

STATE OF KANSAS: 1998
SEDGWICK COUNTY:

BE IT REMEMBERED, that on this _____ day of _____, 1998, before me the undersigned, a Notary Public in and for the County of _____ State aforesaid, came Bob Knight, Mayor of the City of Wichita, to me personally known to be the same person who executed the foregoing instrument of writing and duly acknowledged the execution of the same.

IN WITNESS WHEREOF, I have hereunto set my hand and affixed my official seal, the day and year last above written.

Notary Public
My appointment expires:

This plat of "CENTER FOR HEALTH AND WELLNESS ADDITION" was prepared, submitted to and approved by the Wichita Sedgwick County Metropolitan Area Planning Commission, Wichita, Kansas.

Dated this _____ day of _____, 1998.

WICHITA-SEDGWICK COUNTY METROPOLITAN PLANNING COMMISSION

Richard Lopez, Chairman

Marvin S. Kroy, Secretary

This plat approved and all dedications shown therein, hereby accepted by the City Council of the City of Wichita, Kansas, this _____ day of _____, 1997.

Bob Knight, Mayor

Pat Burnett, City Clerk

