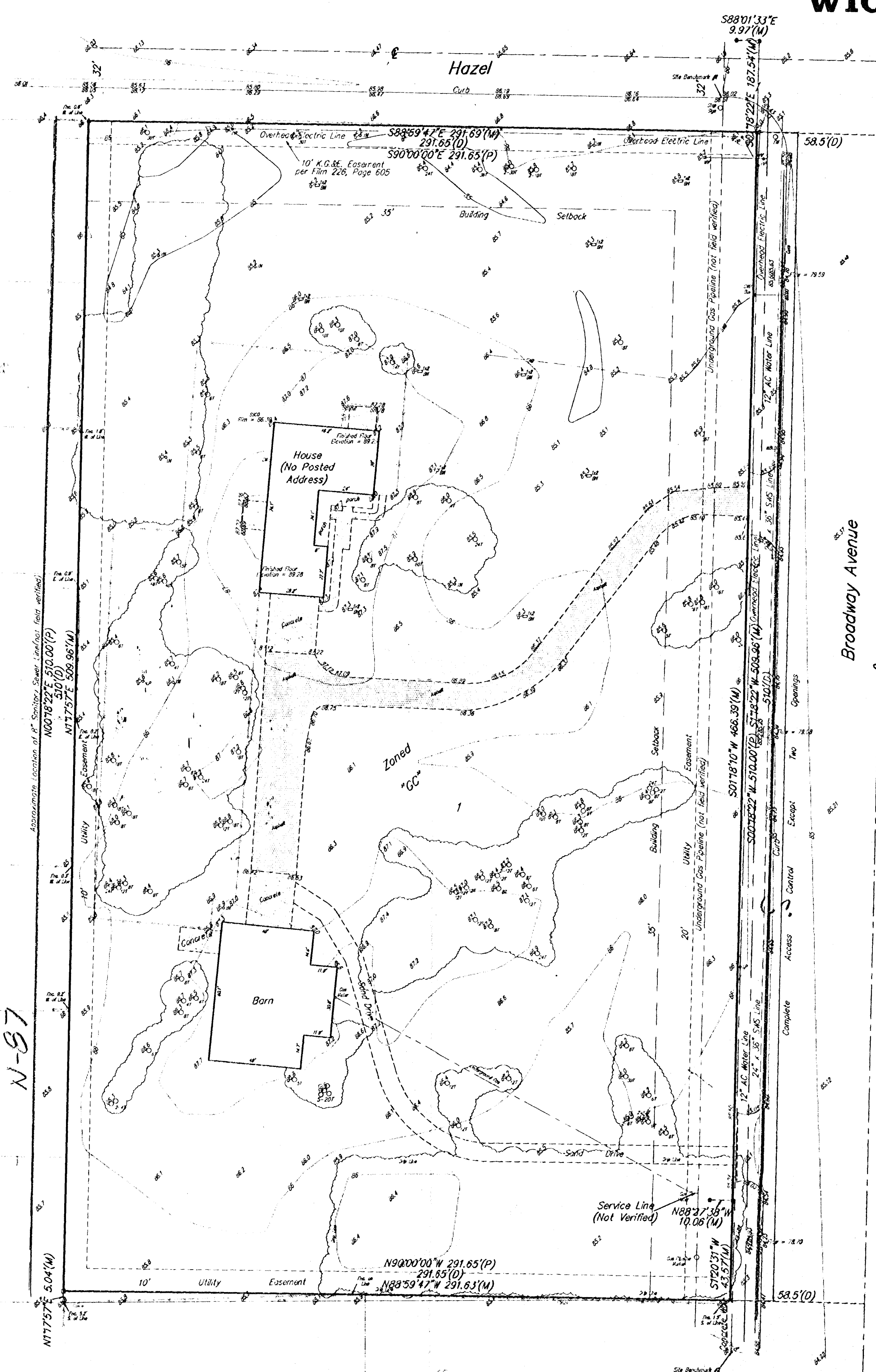


SKETCH PLAT AUTOZONE ADDITION WICHITA, SEDGWICK COUNTY, KANSAS



(P) = Platted per Stoneborough, An Addition to Wichita, Sedgwick County, Kansas
 (D) = Described per Deed
 (M) = Measured

- = Iron Pipe Found
- = #4 Baughman Rebar Found
- ◻ = #4 Baughman Rebar Set
- ▲ = #4 Anderson Rebar Found
- x = 3/4" Iron Pipe Found

LEGEND

- FH = Fire Hydrant
- LP = Light Pole
- MB = Mailbox
- SWB = Southwestern Bell
- SWS = Storm Water Sewer
- YH = Yard Hydrant
- WM = Water Meter
- WV = Water Vault
- WVW = Water Valve
- CB = Catch Basin
- BH = Bore Hole
- EM = Electric Meter
- SSCO = Sanitary Sewer Cleanout

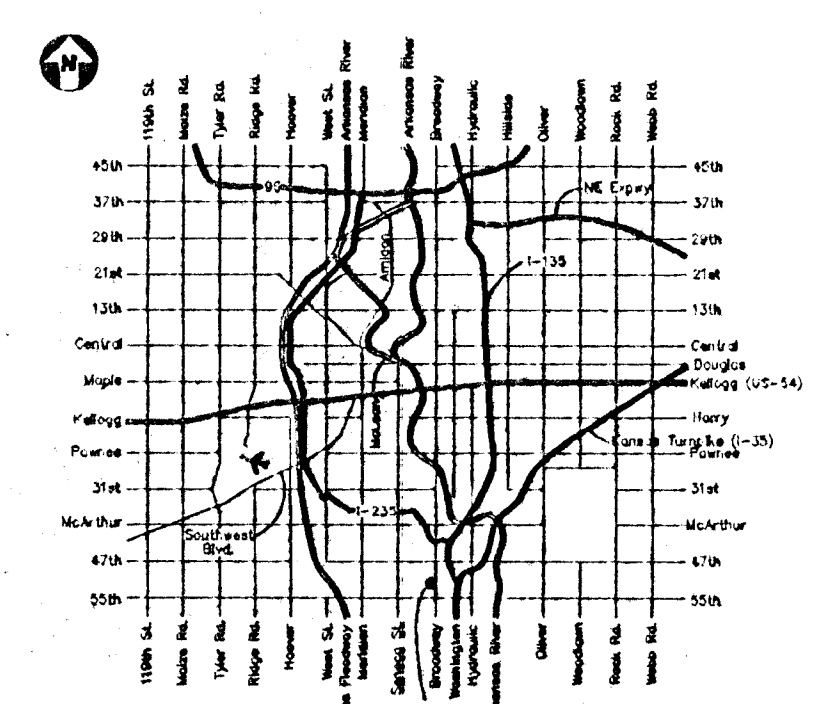
OWNER
 Robbins Realty, a Partnership
 247 W. 54th S.
 Wichita, Kansas 67217

LEGAL DESCRIPTION:
 The north 510 feet of the south 2245 feet of the east 350.15 feet of the SE 1/4 of Sec. 20, Twp. 28-S, R-1-E of the 6th P.M., Sedgwick County, Kansas, except the east 58.5 feet thereof deemed for highway purposes.

DATUM BENCHMARK
 Chiseled "□" in top of curb at the intersection of Hazel and Main near the NE corner of Lot 1, Block 3, Stoneborough Addition. (Elev. = 86.28)

SITE BENCHMARK #1
 Chiseled "□" in top of curb 21.7'± northwesterly of the NE corner of subject property. (Elev. = 86.51)

SITE BENCHMARK #2
 Railroad spike in the west face of an utility pole on the west side of Broadway Avenue 22.5'± south of the SE corner of subject property. (Elev. = 86.20)



VICINITY MAP