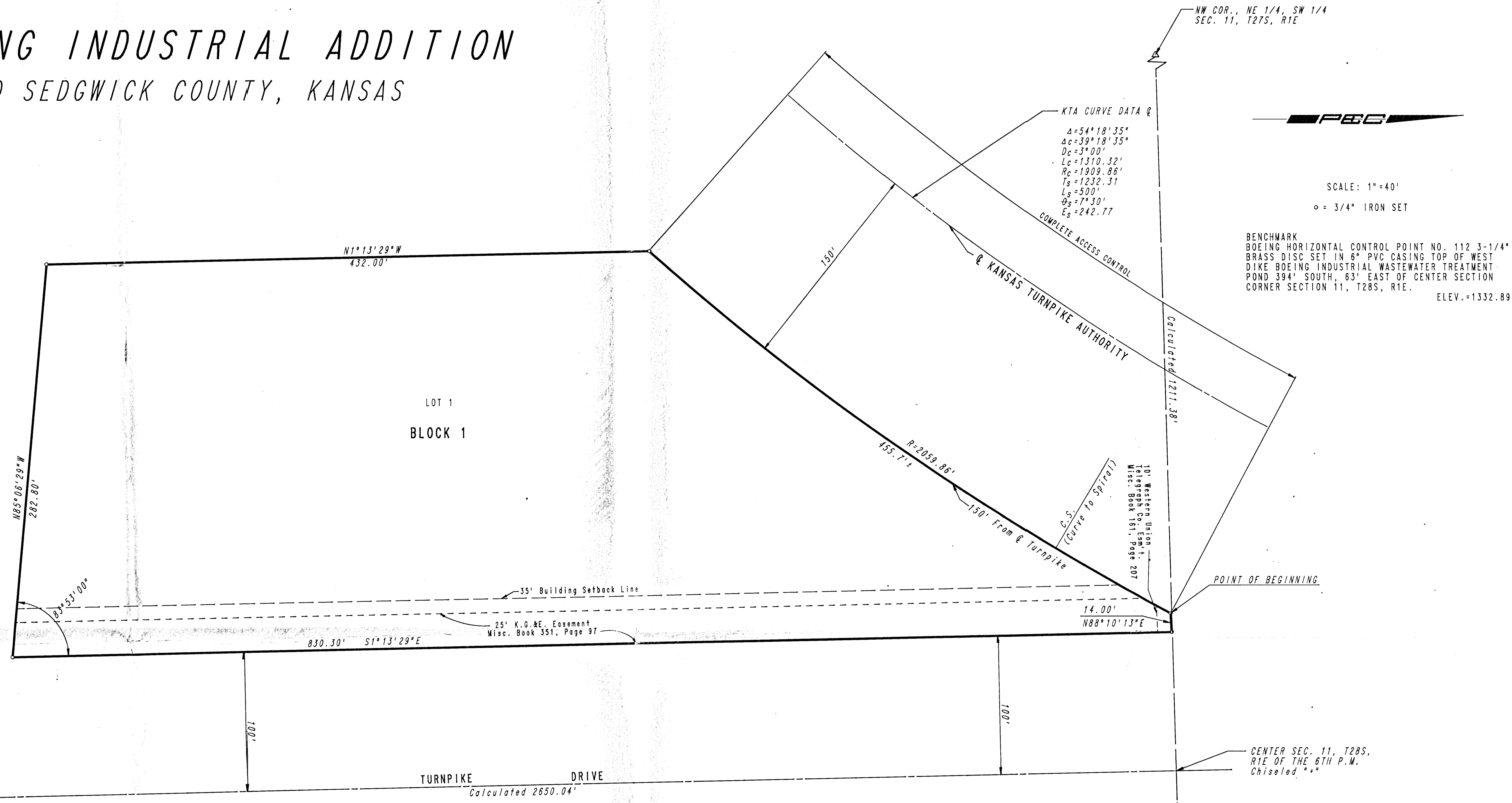


BOEING INDUSTRIAL ADDITION TO SEDGWICK COUNTY, KANSAS



NW COR., NE 1/4, SW 1/4
SEC. 11, T27S, R1E

SCALE: 1"=40'
○ = 3/4" IRON SET

BENCHMARK
BOEING HORIZONTAL CONTROL POINT NO. 112 3-1/4"
BRASS DISC SET IN 6" PVC CASING TOP OF WEST
DIKE BOEING INDUSTRIAL WASTEWATER TREATMENT
POND 394' SOUTH, 63' EAST OF CENTER SECTION
CORNER SECTION 11, T28S, R1E. ELEV.=1332.89

SE COR., SW 1/4,
SEC. 11, T27S, R1E
Found 1" Iron Pipe

STATE OF KANSAS)
COUNTY OF SEDGWICK) SS

I, MICHAEL W. BERRY, A REGISTERED LAND SURVEYOR IN AFORESAID STATE AND COUNTY, DO HEREBY CERTIFY THAT ON THIS 31 DAY OF FEBRUARY, 1993, I HAVE BEEN IN RESPONSIBLE CHARGE OF SURVEYING AND PLATTING OF BOEING INDUSTRIAL ADDITION, TO SEDGWICK COUNTY, KANSAS INTO A LOT AND A BLOCK, THE SAME BEING A TRACT OF LAND IN THE NORTHEAST QUARTER OF THE SOUTHWEST QUARTER OF SECTION 11, TOWNSHIP 28 SOUTH, RANGE 1 EAST OF THE 6TH P.M. DESCRIBED AS FOLLOWS: BEGINNING AT A POINT ON THE NORTH LINE AND 114 FEET WEST OF THE NORTHEAST CORNER OF THE SAID SOUTHWEST QUARTER; THENCE EAST ALONG SAID NORTH LINE 14 FEET; THENCE SOUTH PARALLEL TO THE EAST LINE OF SAID SOUTHWEST QUARTER A DISTANCE OF 830.3 FEET; THENCE NORTHWEST WITH INTERIOR ANGLE OF 83°53' A DISTANCE OF 282.8 FEET; THENCE NORTH PARALLEL TO SAID EAST LINE 432 FEET; THENCE NORTHEAST ALONG A LINE 150' SOUTHEAST AT RIGHT ANGLES FROM THE CENTERLINE OF THE KANSAS TURNPIKE A DISTANCE OF 455.7 FEET MORE OR LESS TO THE POINT OF BEGINNING.

Michael W. Berry
MICHAEL W. BERRY, R.S. NO. 948
PROFESSIONAL ENGINEERING CONSULTANTS, P.A.



KNOW ALL MEN BY THESE PRESENTS THAT WE, THE CITY OF WICHITA, A MUNICIPAL CORPORATION, OWNER OF THE LAND AS ABOVE SET FORTH IN THE SURVEYOR'S CERTIFICATE HAVE CAUSED THE LAND TO BE SURVEYED AND PLATTED INTO A LOT AND A BLOCK, THE SAME TO BE KNOWN AS BOEING INDUSTRIAL ADDITION, TO SEDGWICK COUNTY, KANSAS.

ALL ABUTTER'S RIGHTS OF ACCESS OVER AND ACROSS THE NORTHWESTERLY LINE OF BLOCK 1 ALONG THE SOUTHEASTERLY RIGHT-OF-WAY OF THE KANSAS TURNPIKE AUTHORITY ARE HEREBY GRANTED TO THE APPROPRIATE GOVERNING BODY.

OWNER: THE CITY OF WICHITA, A MUNICIPAL CORPORATION

Frank W. Ojile
FRANK W. OJILE, MAYOR

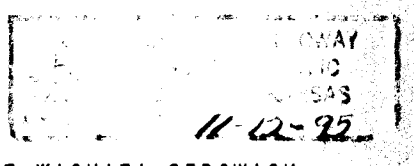
Pat Burnett
PAT BURNETT, DEPUTY CITY CLERK



BE IT REMEMBERED THAT ON THIS 9th DAY OF MARCH, 1993 BEFORE ME, A NOTARY PUBLIC IN AFORESAID STATE AND COUNTY, CAME FRANK W. OJILE, MAYOR; AND PAT BURNETT, DEPUTY CITY CLERK, OF THE CITY OF WICHITA, A MUNICIPAL CORPORATION; TO ME PERSONALLY KNOWN TO BE THE SAME PERSONS WHO EXECUTED THE FOREGOING INSTRUMENT OF WRITING AND DULY ACKNOWLEDGE THE EXECUTION OF SAME, FOR AND ON BEHALF AND AS THE VOLUNTARY ACT AND DEED OF SAID MUNICIPAL CORPORATION, IN TESTIMONY WHEREOF I HAVE HEREUNTO SET MY HAND AND AFFIXED MY NOTARIAL SEAL THE DAY AND YEAR ABOVE WRITTEN.

Charles H. Spillman
NOTARY PUBLIC

MY COMMISSION EXPIRES December 19, 1995



THIS PLAT HAS BEEN SUBMITTED TO AND APPROVED BY THE WICHITA-SEGWICK COUNTY METROPOLITAN AREA PLANNING COMMISSION, WICHITA, KANSAS, DATED THIS 7-1-92 DAY OF DECEMBER, 1992.

L. O. Breckenridge, Jr.
L. O. BRECKENRIDGE, JR., CHAIRMAN

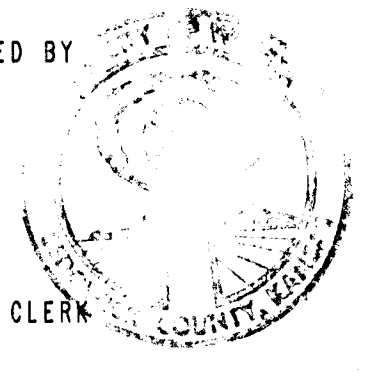
Marvin S. Krout
MARVIN S. KROUT, SECRETARY



THIS PLAT APPROVED AND ALL DEDICATIONS SHOWN HEREON ARE ACCEPTED BY THE CITY COUNCIL OF THE CITY OF WICHITA, KANSAS. DATED THIS _____ DAY OF _____, 1993.

Frank W. Ojile
FRANK W. OJILE, MAYOR

Pat Burnett
PAT BURNETT, DEPUTY CITY CLERK



THIS PLAT APPROVED AND ALL DEDICATIONS SHOWN HEREON, IF ANY, ACCEPTED BY THE BOARD OF COUNTY COMMISSIONERS OF SEDGWICK COUNTY, KANSAS THIS _____ DAY OF _____, 1993.

MARK F. SCHROEDER, CHAIRMAN

BILLY Q. MCCRAY, CHAIRMAN PRO TEM

BETSY GWINN, COMMISSIONER

PAUL W. HANCOCK, COMMISSIONER

THOMAS G. WINTERS, COMMISSIONER

SUSAN E. CROCKETT-SPOON, COUNTY CLERK

ENTERED ON TRANSFER RECORD THIS _____ DAY OF _____, 1993.

SUSAN E. CROCKETT-SPOON, COUNTY CLERK

THIS IS TO CERTIFY THAT THIS INSTRUMENT WAS FILED FOR RECORD IN THE REGISTER OF DEEDS OFFICE AT _____ M., ON THIS _____ DAY OF _____, 1993.

PAT KETTLER, REGISTER OF DEEDS

ED RESA, DEPUTY