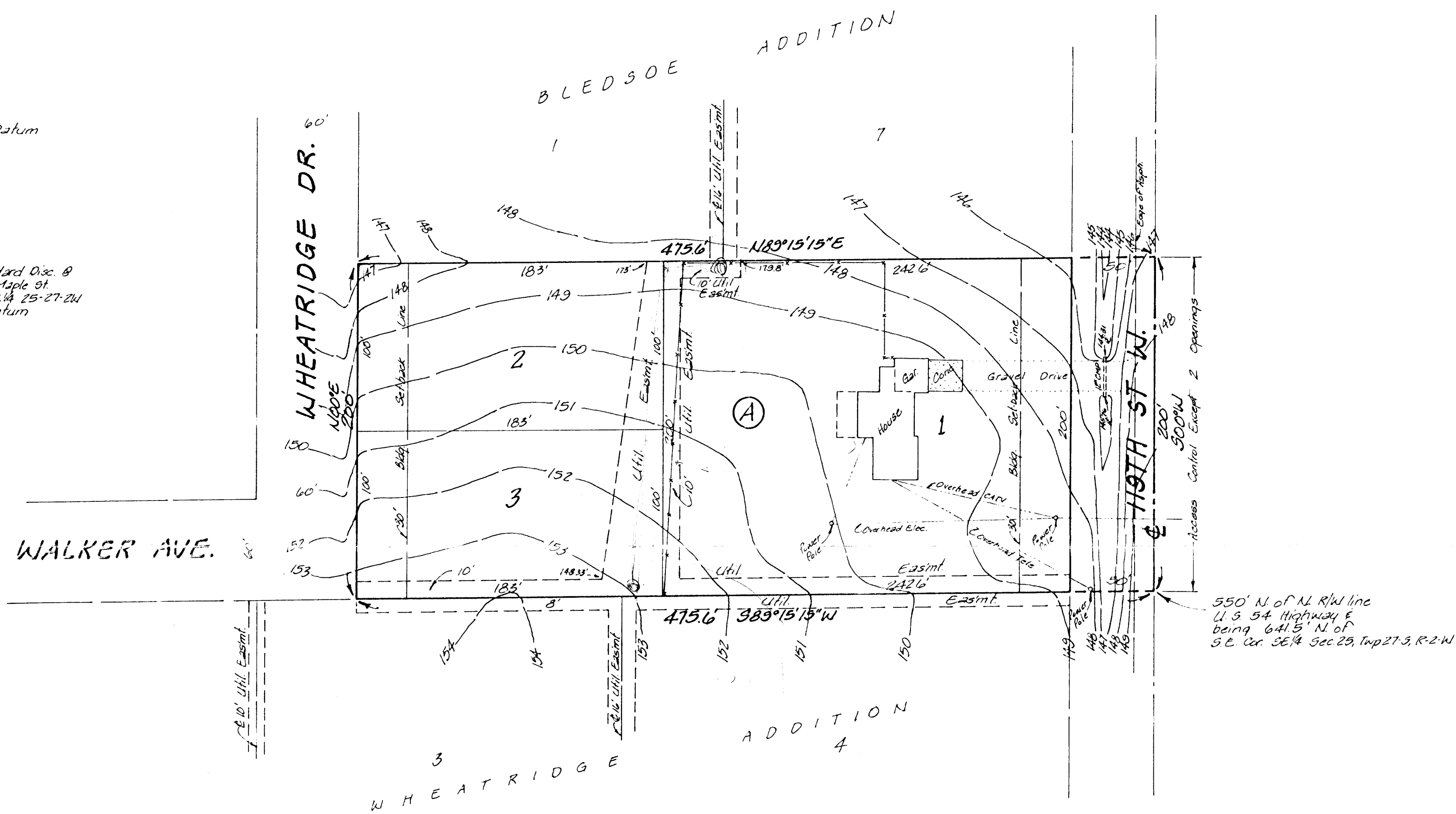


BENCH MARK: City Standard Disc @  
 113TH ST. W. 1/4 Mile S. of Maple St.  
 33' E. 5' S. of N.E. Cor. Sec. 14, 25-27-2W  
 Elevation = 130.36 City Datum



SKETCH PLAT

**BOLTON ADDITION**

A TRACT IN THE SE 1/4, SEC 25, TWP 27-S, R-2-W

OWNER: G. C. BOLTON