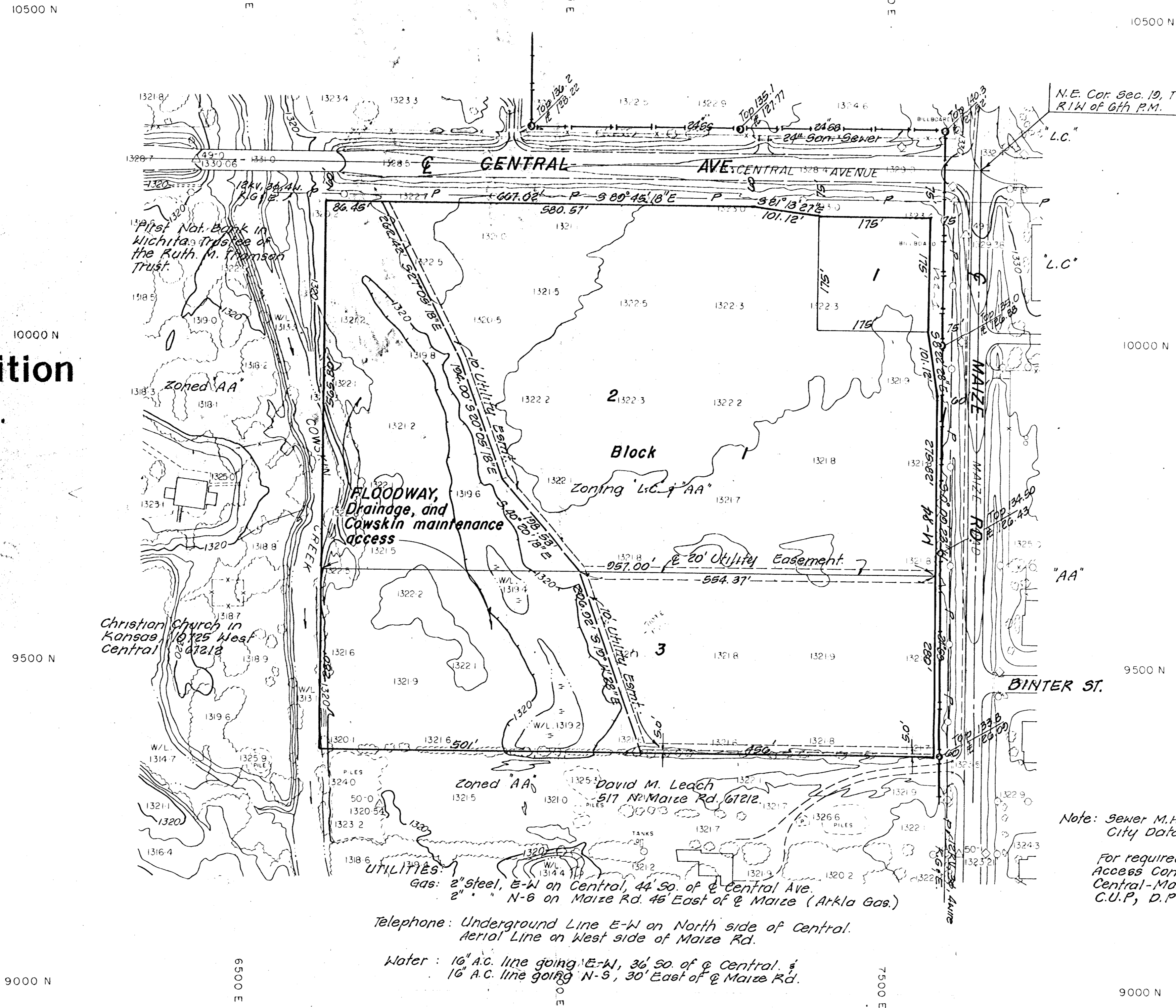



# PRELIMINARY PLAT of Central-Maize 2nd Addition WICHITA, SEDGWICK COUNTY, KANSAS.

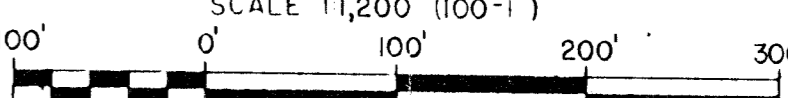
OWNER: HIGHLAND HOUSE, A PARTNERSHIP,  
c/o Nestor Weigand Jr  
150 N. Market, Wichita, Ks. 67202

ENGINEER: P.E.C. p.a.  
1440 E. English  
Wichita, Ks. 67211



  
 City of Wichita B.M. Disc 41.3 ft. South &  
 52.5 ft. East of centerline intersection  
 of Central Ave. & Maize Rd.  
 Elev. = 142.257 City data.

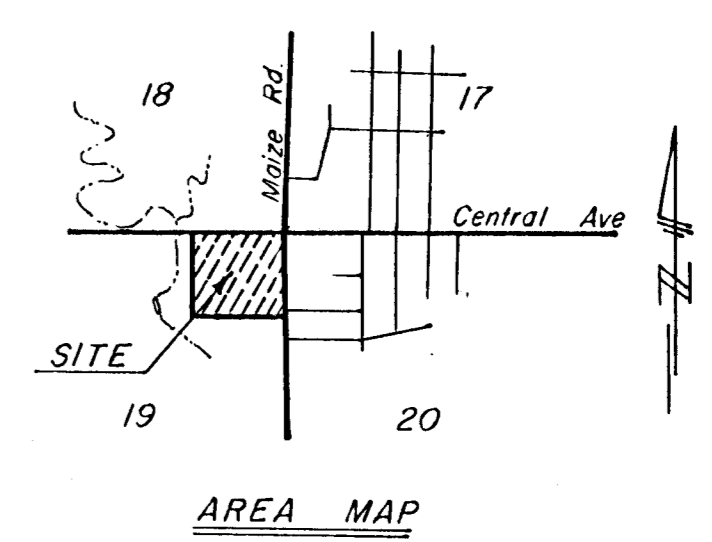
TOPOGRAPHIC MAP OF LANDS LOCATED AT  
**N.E. 1/4 SECTION 19, T-27S, R-1W.**  
**SEDGWICK COUNTY, KANSAS**  
 SURVEYING & ENGINEERING  
**P. E. C. - ALLIED LABORATORIES**

SCALE 1:1,200 (100'-1")  
  
 CONTOUR INTERVAL 2 FT.

PHOTOCURAMETRY BY:  
MILES & R PHOTO SURVEY  
DA GHT, KANSAS 66843  
(913) 482-1550 FILE M 97 P 40

AERIAL PHOTOGRAPHY  
TYPE VERTICAL AT 40% F.G.  
ALTITUDE 3,000 FEET A.M.S.L.  
DATE 5/5 OBTAINED DEC 1981

June, 1983



Note: Sewer M.H. Elev. on  
City Data.

For required Setbacks &  
Access Control See  
Central-Maize 2nd Add.  
C.U.P., D.P. No. 120.

UTILITIES:  
Gas: 2" steel, E-W on Central, 44' So. of Central Ave.  
2" N-6 on Maize Rd. 45' East of E Maize (Arkla Gas.)

Telephone: Underground Line E-W on North side of Central.  
Aerial Line on West side of Maize Rd.

Water: 16" A.C. line going E-W, 36' So. of Central.  
16" A.C. line going N-S, 30' East of E Maize Rd.