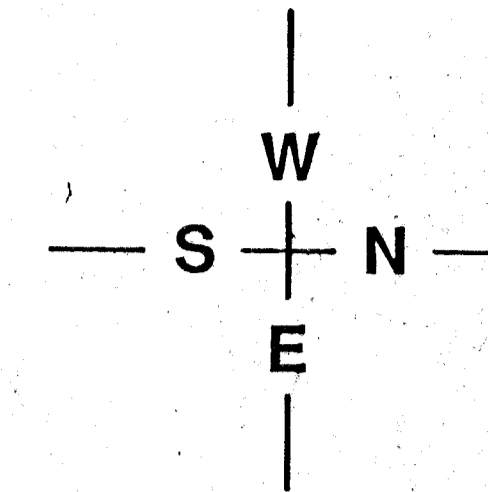
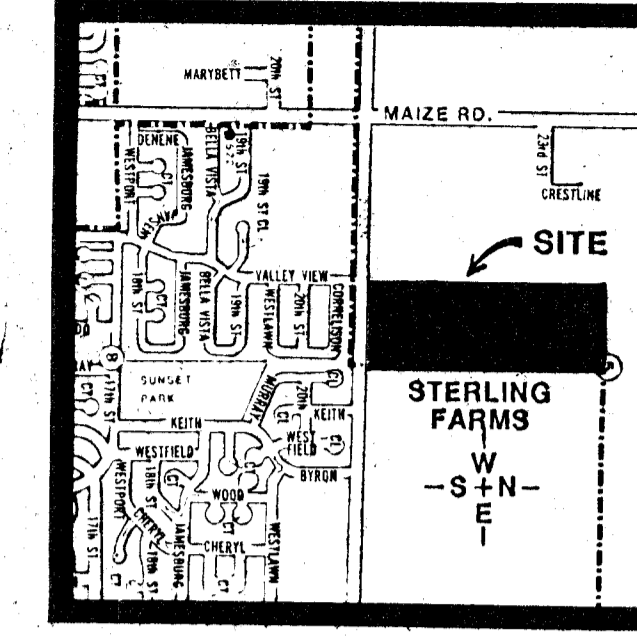


**NOTES:**

- 1) DRAINAGE CONCEPT PLAN TO BE PREPARED AND SUBMITTED TO CITY ENGINEER BY BAUGHMAN CO.
- 2) B.M. CITY DISC. 84' E. 99' S. CENTERLINE MAIZE & 21ST NO. ELEV. 164.30 CITY DATUM.
- 3) RESERVES "A" & "D" TO PERMIT LAKES, DRNG. STRUCTURES, LANDSCAPING, WALKS, GAZEBOS, FLAGS AND UTILITIES CONFINED TO EASEMENTS.
- 4) RESERVES "B" & "C" TO PERMIT LANDSCAPING, ENTRY MONUMENTS, FLAGS, AND UTILITIES CONFINED TO EASEMENTS.
- 5) RESERVE "E" TO PERMIT LANDSCAPING AND UTILITIES CONFINED TO EASEMENTS.
- 6) TOTAL AREA- 57.9 AC.



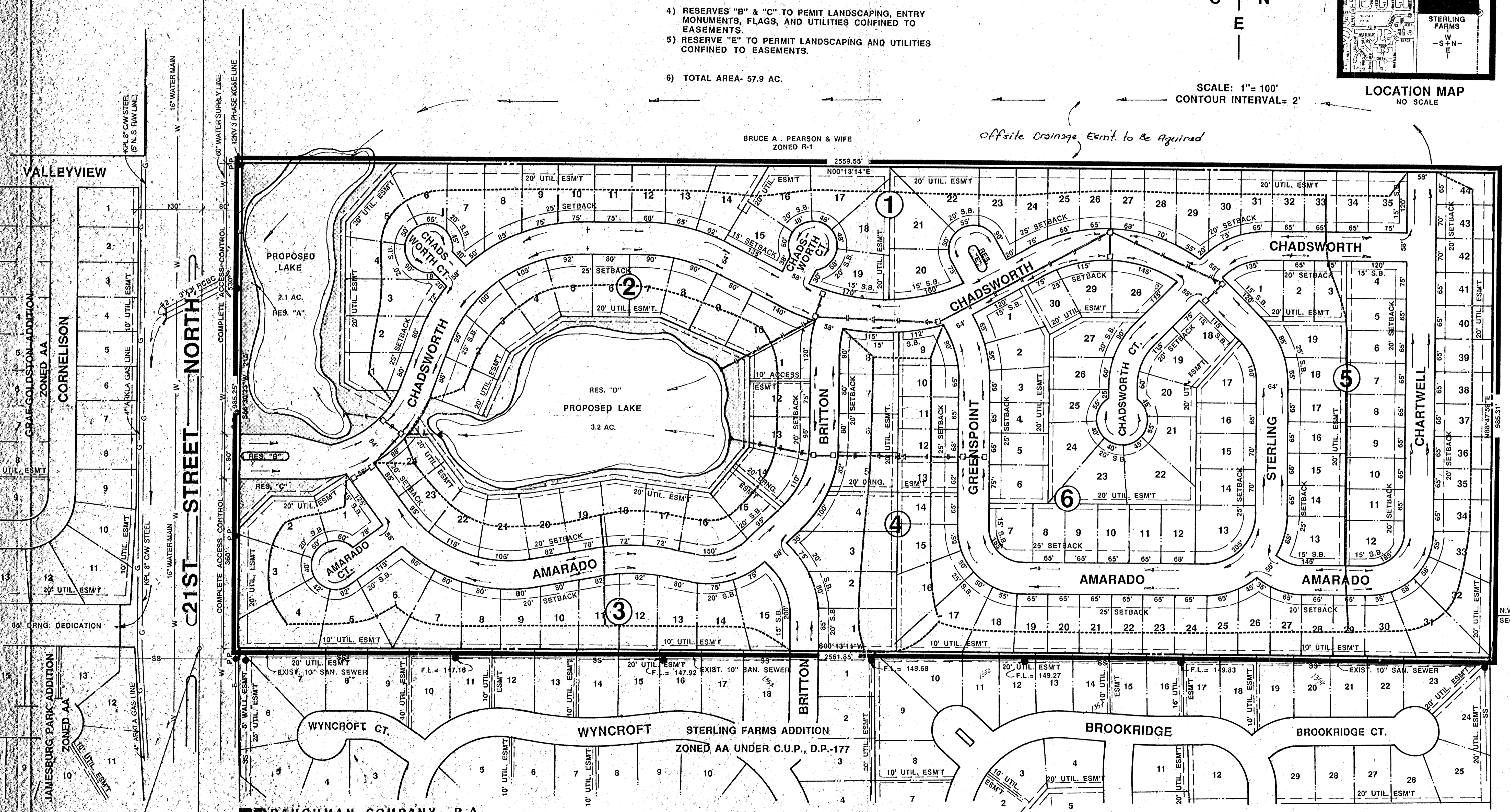
SCALE: 1" = 100'  
CONTOUR INTERVAL = 2'



LOCATION MAP  
NO SCALE

BRUCE A. PEARSON & WIFE  
ZONED R-1

*Offsite Drainage Esmt. to be Acquired*

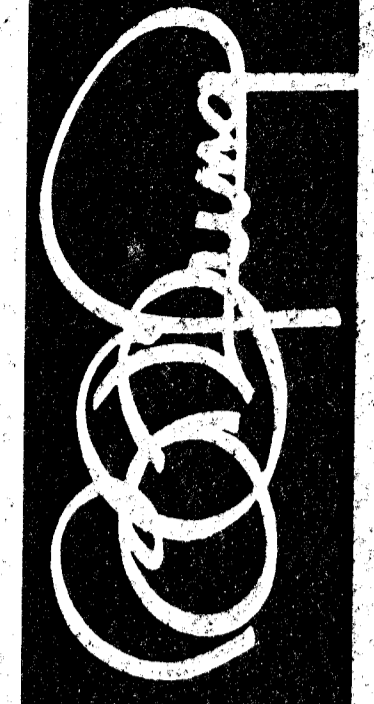


**BAUGHMAN COMPANY, P.A.**  
SURVEYING & ENGINEERING  
316-269-7271 • 315 ELLIS • WICHITA, KANSAS 67211

DRAINAGE CONCEPT 11/10/90  
PRELIMINARY PLAT

# CHADSWORTH ADDITION

OWNER: THREE A H CORPORATION, P.O. BOX 9007, WICHITA, KS 67277-0007 PH: 722-2417



**BILL G. YUNG DESIGN**  
442 E. 29TH STREET-NORTH WICHITA, KS 67201  
316-693-6567 FAX 316-693-6286

DATE NOV. 9, 1990  
REV.

SHEET TITLE  
PRELIMINARY PLAT

PROJECT  
CHADSWORTH ADDITION

SHEET  
OF