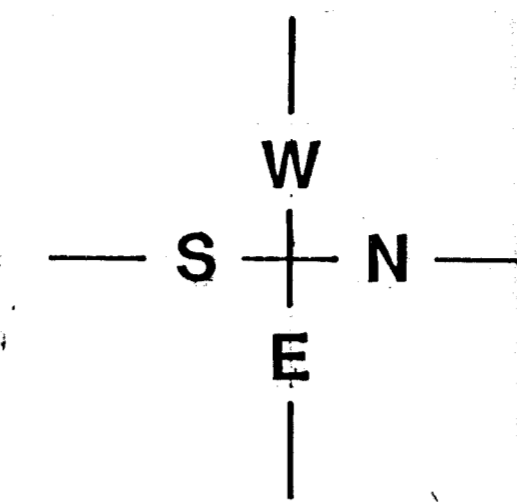
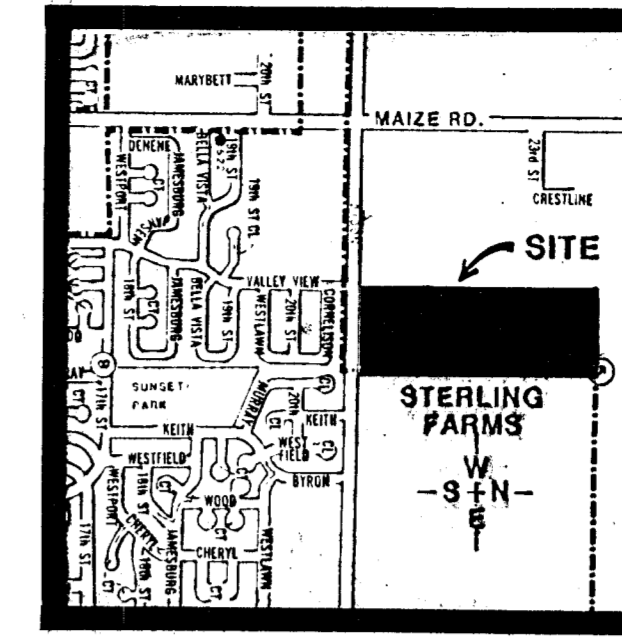


NOTES:

- 1) DRAINAGE CONCEPT PLAN TO BE PREPARED AND SUBMITTED TO CITY ENGINEER BY BAUGHMAN CO.
- 2) B.M.- CITY DISC. 64' E. 99' S. CENTERLINE MAIZE & 21ST NO. ELEV.- 164.30 CITY DATUM.
- 3) RESERVES "A" & "D" TO PERMIT LAKES, DRNG. STRUCTURES, LANDSCAPING, WALKS, GAZEBOS, FLAGS AND UTILITIES CONFINED TO EASEMENTS.
- 4) RESERVES "B" & "C" TO PERMIT LANDSCAPING, ENTRY MONUMENTS, FLAGS, AND UTILITIES CONFINED TO EASEMENTS.
- 5) RESERVE "E" TO PERMIT LANDSCAPING AND UTILITIES CONFINED TO EASEMENTS.
- 6) TOTAL AREA- 57.9 AC.

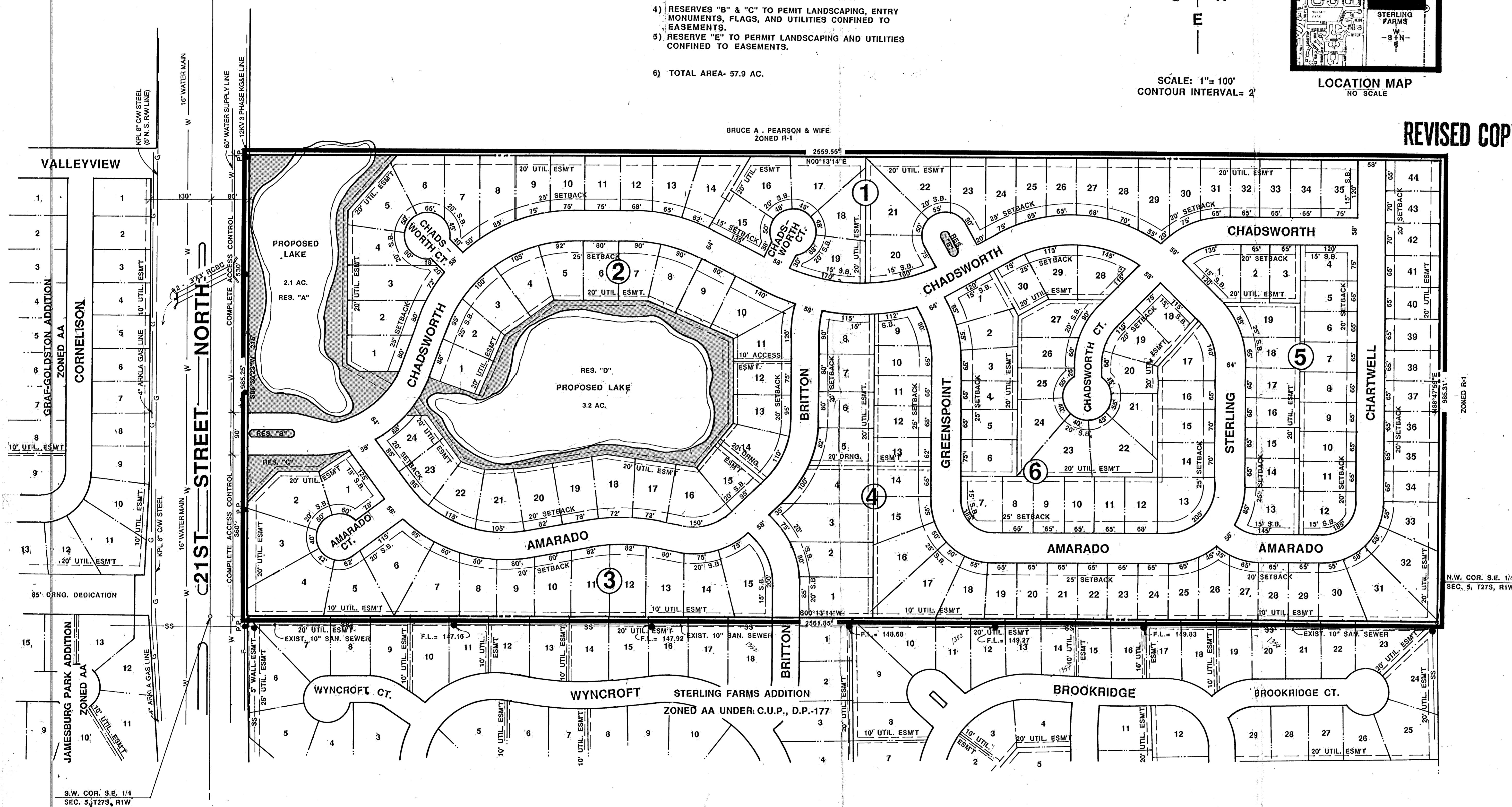


SCALE: 1" = 100'
CONTOUR INTERVAL = 2'



LOCATION MAP
NO SCALE

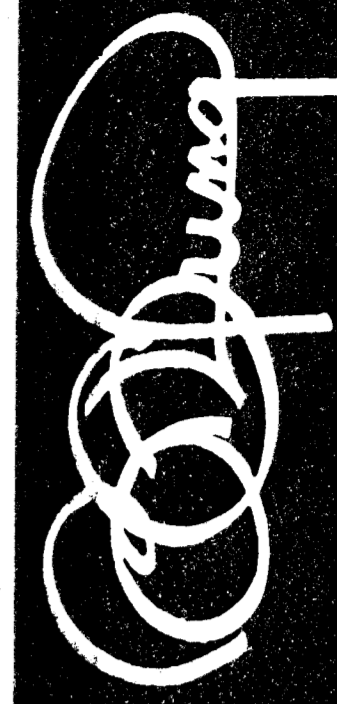
REVISED COPY



PRELIMINARY PLAT

CHADSWORTH ADDITION

OWNER: THREE A H CORPORATION, P.O. BOX 9007, WICHITA, KS 67277-0007 PH: 722-2417



BILL G. YUNG DESIGN
WICHITA, KS. 67220
4912 E. 29TH STREET NORTH
316-685-5567 FAX 316-685-9296

DATE NOV. 9, 1990
REV.

SHEET TITLE
PRELIMINARY PLAT

PROJECT
CHADSWORTH ADDITION

SHEET
OF