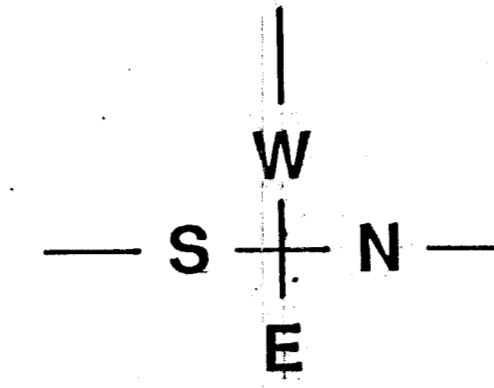
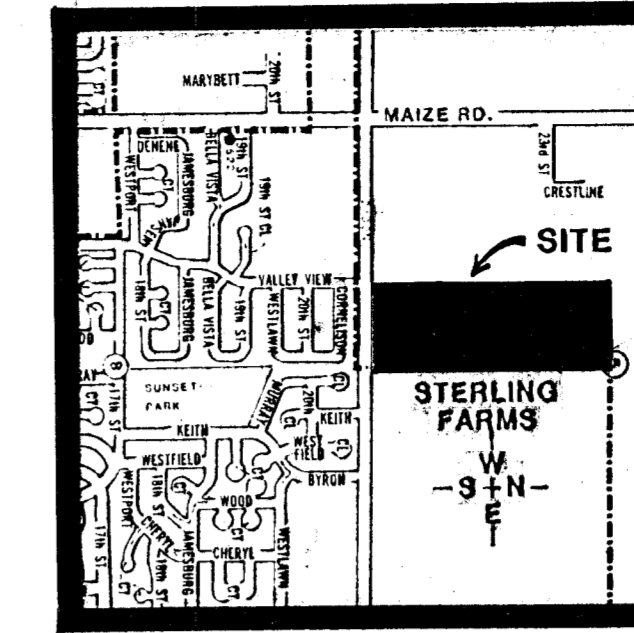


NOTES:

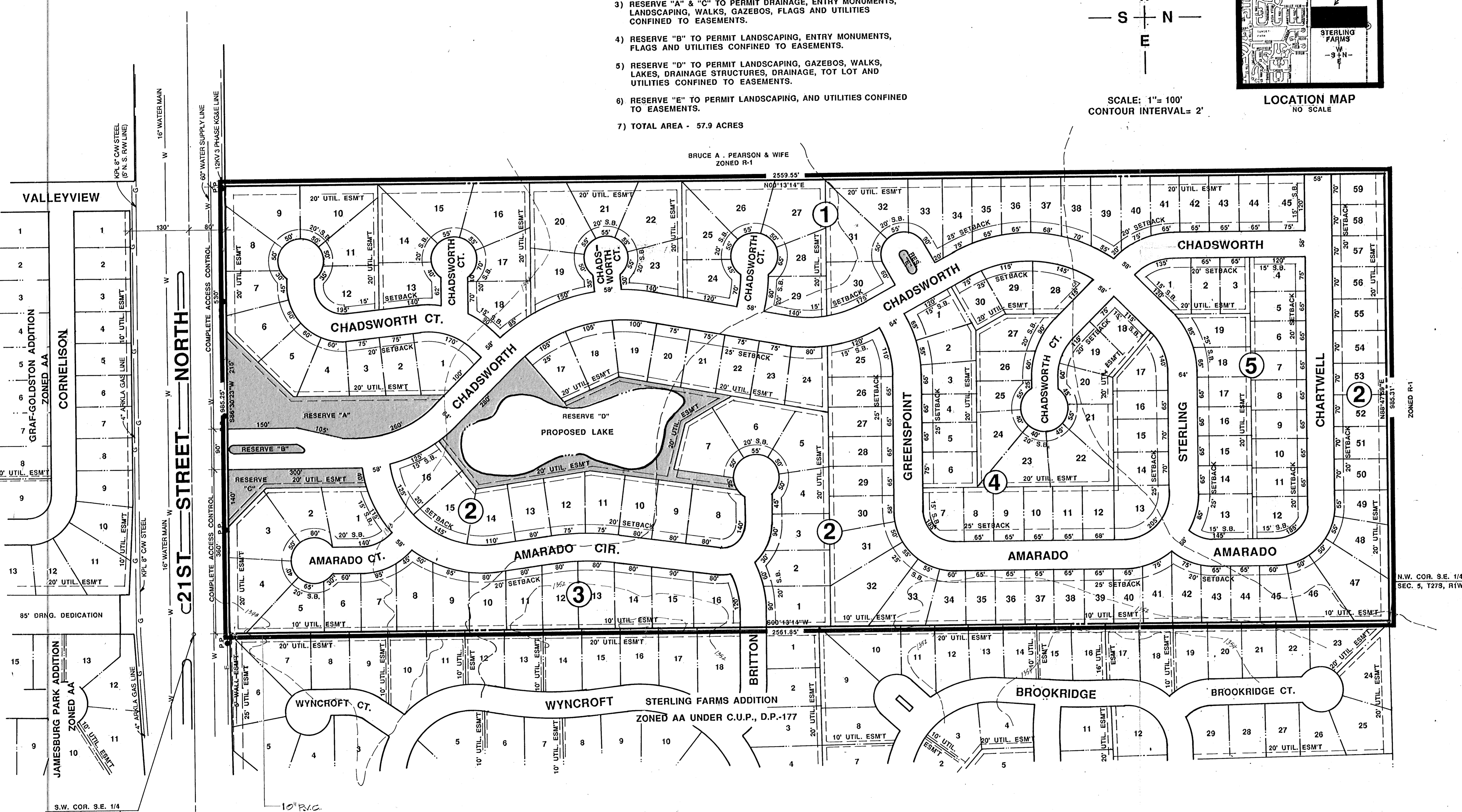
- 1) DRAINAGE CONCEPT PLAN TO BE PREPARED AND SUBMITTED TO CITY ENGINEER BY BAUGHMAN CO.
- 2) B.M.- CITY DISC. 64' E. 99' S. CENTERLINE MAIZE & 21ST NO. ELEV.- 164.30 CITY DATUM.
- 3) RESERVE "A" & "C" TO PERMIT DRAINAGE, ENTRY MONUMENTS, LANDSCAPING, WALKS, GAZEBOS, FLAGS AND UTILITIES CONFINED TO EASEMENTS.
- 4) RESERVE "B" TO PERMIT LANDSCAPING, ENTRY MONUMENTS, FLAGS AND UTILITIES CONFINED TO EASEMENTS.
- 5) RESERVE "D" TO PERMIT LANDSCAPING, GAZEBOS, WALKS, LAKES, DRAINAGE STRUCTURES, DRAINAGE, TOT LOT AND UTILITIES CONFINED TO EASEMENTS.
- 6) RESERVE "E" TO PERMIT LANDSCAPING, AND UTILITIES CONFINED TO EASEMENTS.
- 7) TOTAL AREA - 57.9 ACRES



SCALE: 1"= 100'
CONTOUR INTERVAL= 2'

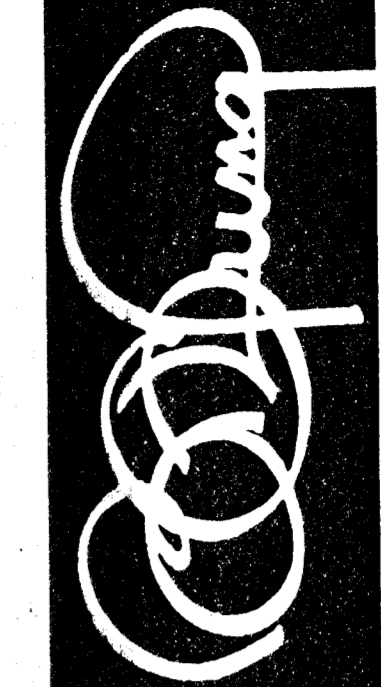


LOCATION MAP
NO SCALE



PRELIMINARY PLAT
CHADSWORTH ADDITION

OWNER: THREE A H CORPORATION, P.O. BOX 9007, WICHITA, KS 67277-0007 PH: 722-2417



BILL G. YUNG DESIGN
WICHITA, KS 67220
4610 E. 28TH STREET NORTH
316-653-6567

DATE OCT. 16, 1990
REV.

SHEET TITLE
PRELIMINARY PLAT

PROJECT
CHADSWORTH ADDITION

SHEET
OF