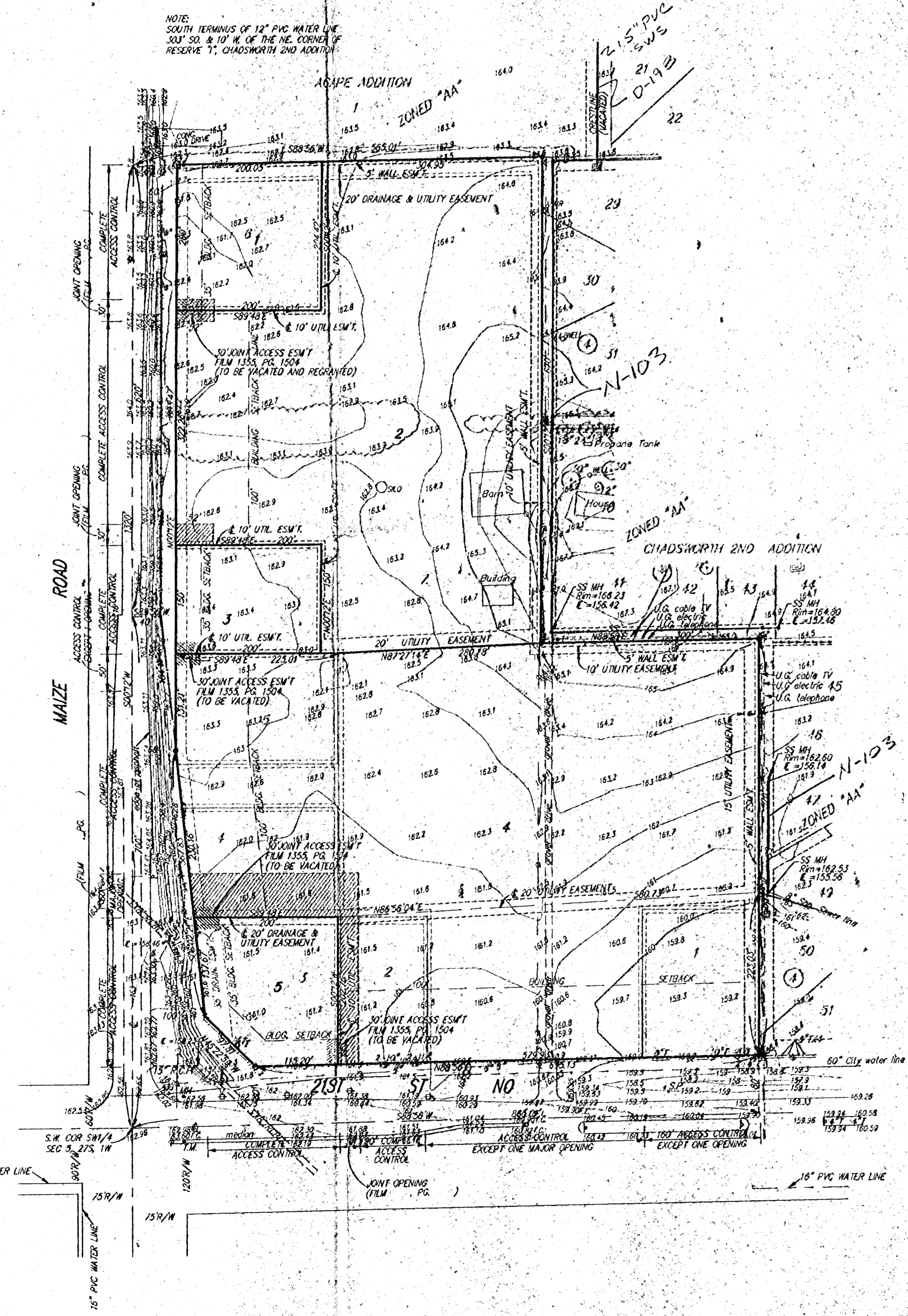


SKETCH PLAT  
**CHADSWORTH 2ND COMMERCIAL ADDITION**  
 WICHITA, SEDGWICK COUNTY, KANSAS



NOTE:  
 SOUTH TERMINUS OF 12" PVC WATER LINE  
 30' W. & 10' N. OF THE NE CORNER OF  
 RESERVE 7, CHADSWORTH 2ND ADDITION.



- 1" = 100'
- = 1/2" REBAR W/ BAUGHMAN CAP (SET)
  - = 3/4" IRON (FOUND)
  - = 1/2" IRON (FOUND)
  - \* = CROSS (FOUND)

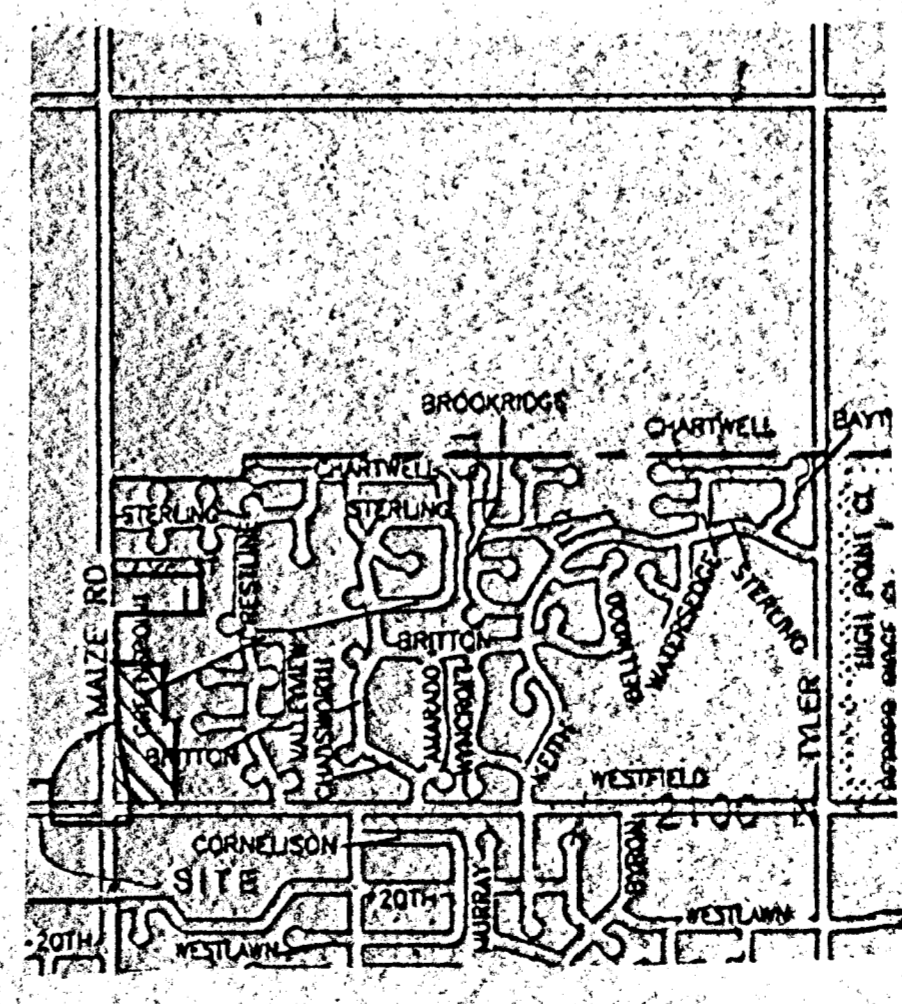
Owner:  
 Bruce A. & Esther L. Pearson  
 10128 W. 21st St. No.  
 Wichita, Kansas 67212

NOTE:  
 Additional Building Setbacks required  
 per Chadsworth Commercial Community  
 Unit Plan, Dd-204, on file in the  
 Wichita Metropolitan Area Planning  
 Department Office.

Legal Description:  
 A replat of Lots 1, 2, 3, 4, 5, 6, and 7,  
 Chadsworth Commercial Addition, Wichita,  
 Sedgwick County, Kansas.

BENCH MARK:  
 City of Wichita bench mark disc, SE corner of  
 intersection, 64' east and 29' south of the  
 centerlines of Maize and 21st St. Ss.  
 Elevation = 164.30 City Datum

- LEGEND
- ⊙ P.P. = Power Pole
  - ⊙ S.P. = Sign Pole
  - ⊙ T.S. = Traffic Signal Box
  - ⊙ S.S.M.H. = Sanitary Sewer Manhole
  - ⊙ C.T.V. = Cable Television
  - ⊙ S.W. = Southwestern Gas Telephone
  - T.M. = Traffic Manhole



VICINITY MAP