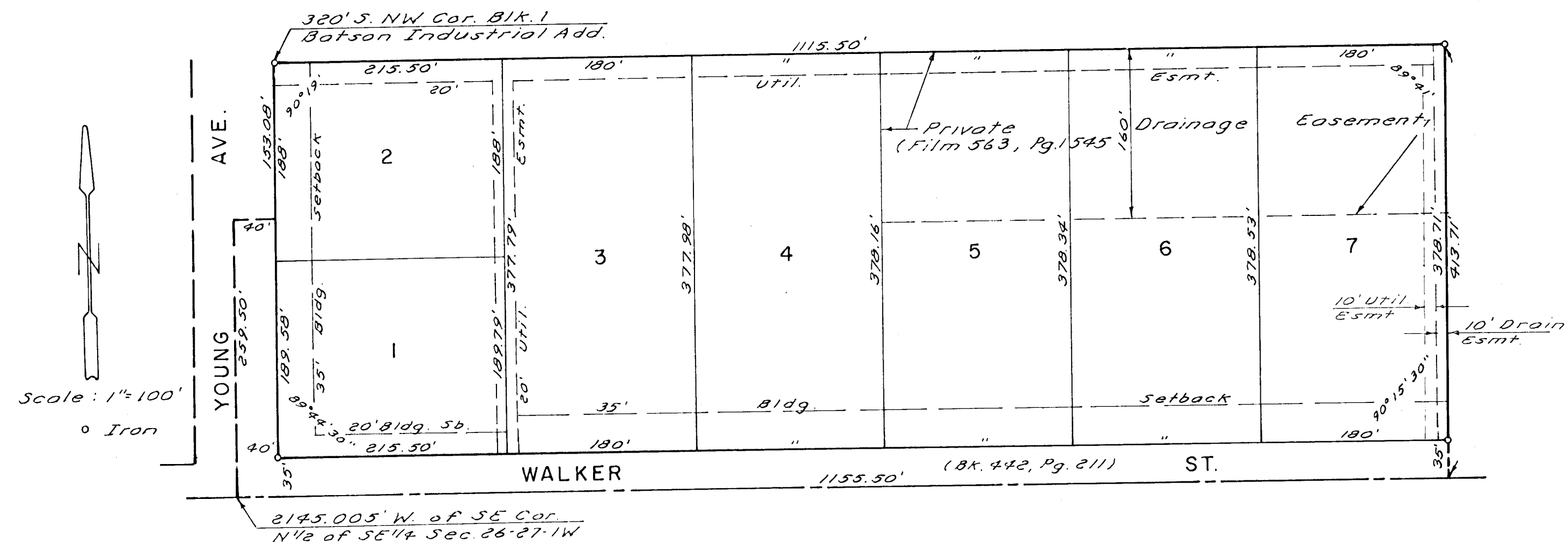


# CHANCE INDUSTRIAL PARK

WICHITA, KANSAS



This plat of "CHANCE INDUSTRIAL PARK" Wichita, Kansas, has been submitted to and approved by the Wichita-Sedgwick County Metropolitan Area Planning Commission, Wichita, Kansas. Dated this 20<sup>th</sup> day of May, 1983.

Wichita-Sedgwick County Metropolitan Area Planning Commission  
 Chairman: James L. Gargner, III  
 Secretary: Robert A. Corbin

This plat approved and all dedications shown hereon accepted by the Board of City Commissioners, Wichita, Kansas, this 30<sup>th</sup> day of June, 1983.

Mayor: Margaret Thiel  
 City Clerk: Dana C. Dierker

This plat approved and all dedications shown hereon accepted by the Board of County Commissioners, Sedgwick County, Kansas, this \_\_\_\_\_ day of \_\_\_\_\_, 1983.

Chairman: Jack Spratt  
 Commissioner: Donald E. Gloff  
 Commissioner: Tom Scott  
 County Clerk: Dorothy R. White

Entered on transfer record this \_\_\_\_\_ day of \_\_\_\_\_, 1983.

County Clerk: Dorothy R. White

State of Kansas } S.S. This is to certify that Sedgwick County } this plat has been filed for record in the Office of the Register of Deeds this \_\_\_\_\_ day of \_\_\_\_\_, 1983, at \_\_\_\_\_ o'clock, \_\_\_\_\_ M., and is duly recorded.

Register of Deeds: Bette F. McCarr  
 Deputy: Pat Kettler

State of Kansas } S.S. We, Baughman Company, Sedgwick County } P.A., Surveyors in aforesaid county and state, do hereby certify that we have surveyed and platted "CHANCE INDUSTRIAL PARK", Wichita, Kansas, and that the accompanying plat is a true correct exhibit of the property surveyed, described as a replat of the West 1115.50 feet of Lot 1, Batson Industrial Addition, Sedgwick County, Kansas, except the north 320 feet thereof, and the west 1155.50 feet of the east 2145.005 feet of the south 259.50 feet of the N 1/2 of the SE 1/4 of Section 26, T27S, R1W of the 6th P.M., Sedgwick County, Kansas, except for street dedicated in Bk. 442, Pg. 211. The existing 8 foot easement platted in said Batson Industrial Addition is being vacated by virtue of K.S.A. 1970 Supp. 12-512(b).

Date Jan. 27, 1983 Baughman Company, P.A.  
 John E. Lundblade Surveyor

Know all men by these presents that we, the undersigned have caused the land described in the surveyors certificate to be platted in lots and streets to be known as "CHANCE INDUSTRIAL PARK", Wichita, Kansas. The easements are hereby granted as indicated for the construction and maintenance of public utilities. The streets are hereby dedicated to and for the use of the public. The drainage easements are hereby granted for drainage purposes. Chance Properties, a Partnership

Richard H. Chance Managing Partner

State of Kansas } S.S. The foregoing instrument was acknowledged before me this \_\_\_\_\_ day of \_\_\_\_\_, 1983, by Chance Properties, a partnership, by Richard H. Chance, managing partner.

Notary Public  
 My Commission Expires \_\_\_\_\_