

CHANCE INDUSTRIAL PARK 2ND ADDITION

WICHITA, SEDGWICK COUNTY, KANSAS

State of Kansas) SS We, Baughman Company, P.A., Surveyors in
Sedgwick County) and state do hereby certify that we have surveyed
and platted "CHANCE INDUSTRIAL PARK 2ND ADDITION", Wichita, Sedgwick
County, Kansas, and that the accompanying plat is a true and
correct exhibit of the property surveyed, described as and being a
replat of Lots 5 and 6, Block 4, West 54 Industrial Addition, Wichita,
Sedgwick County, Kansas, and Lots 1, 2, 3, 4, 5, 6, and 7, Chance
Industrial Park, Wichita, Sedgwick County, Kansas, and the east 535.5
feet of the west 1115.5 feet of the north 320 feet of Lot 1, in Batson
Industrial Addition, Wichita, Kansas, Sedgwick County, Kansas, and that
part of Lot 1, Batson Industrial Addition, Wichita, Kansas, Sedgwick
County, Kansas, described as beginning at the S.W. Corner of the
north 320 feet of said Lot 1; thence east parallel with the north line
of said Lot 1 to a point 580 feet east of the west line of said Lot 1,
as measured at right angles to said west line; thence north parallel
with the west line of said Lot 1, 254 feet; thence west parallel with
the north line of said Lot 1, to a point on the west line of said Lot 1,
thence south 254 feet to the point of beginning.

Building setback lines and public easements except the 7 foot sanitary
sewer easement and the 8 foot utility easement as shown crossing
Lot 1 are hereby vacated by virtue of K.S.A. 1970 Supp. 12-512(b).
Being situated in the S.E. 1/4 of Sec. 26, Twp. 27-S, R-1-W
of the 6th P.M., Sedgwick County, Kansas.

1-11-72 Date
Baughman Company, P.A.

Gregory F. Severns
Surveyor

Know all men by these presents that we,
the undersigned, have caused the land described in the surveys
certificate to be platted into lots to be known as "CHANCE INDUSTRIAL
PARK 2ND ADDITION", Wichita, Sedgwick County, Kansas. The
sanitary sewer easements are hereby granted as indicated for the
construction and maintenance of public sanitary sewer lines. The
drainage and utility easement is hereby granted as indicated for the
construction and maintenance of all public utilities, and for drainage
purposes.

The City of Wichita, Kansas
Bob Knight Mayor

Pat Burnett Deputy City Clerk

Chance Properties, a Kansas general partnership
Richard H. Chance Partner

Richard G. Chance Partner

Richard H. Chance Marjorie E. Chance

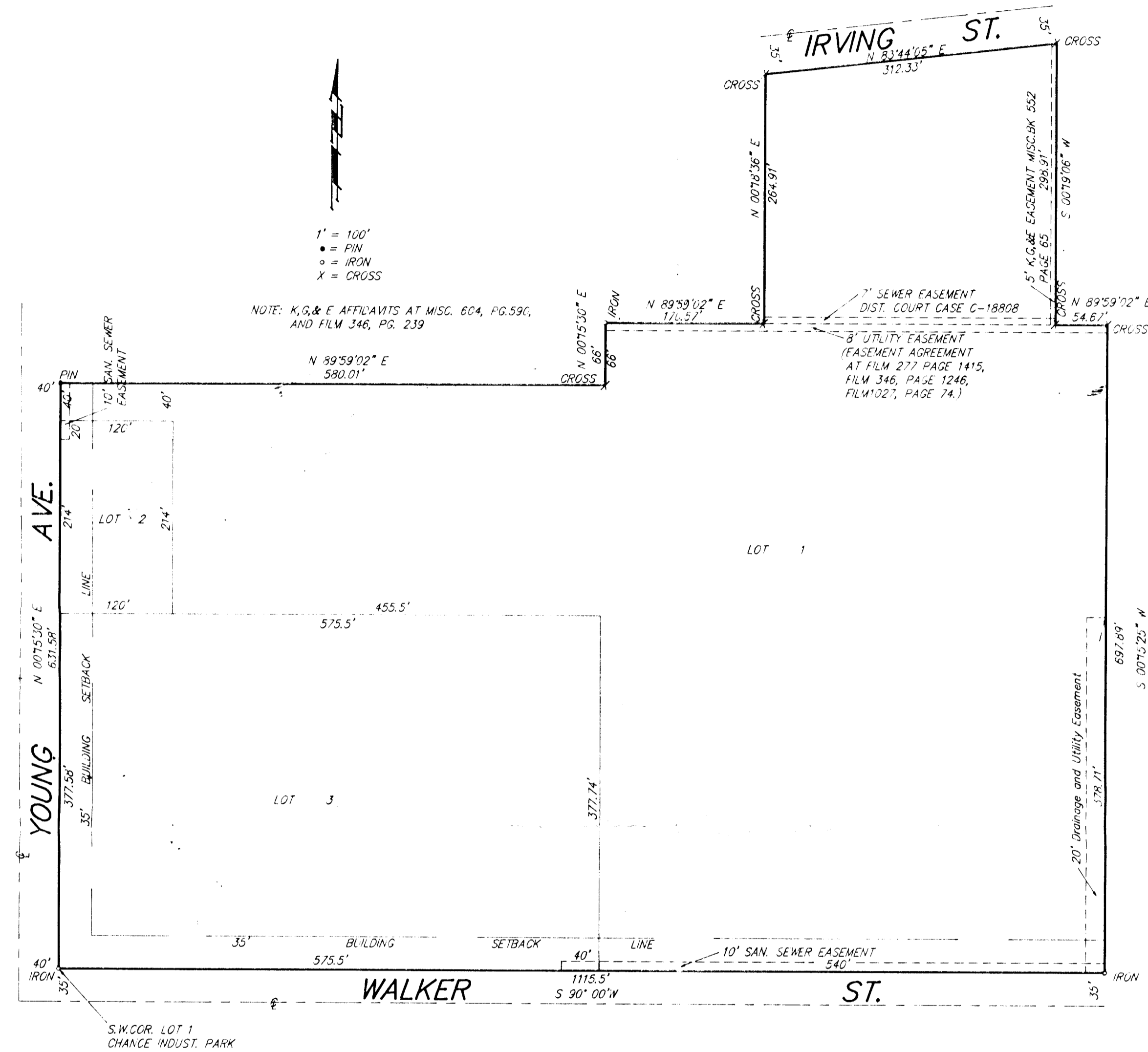
Richard G. Chance Carol L. Chance

State of Kansas) SS The foregoing instrument was acknowledged
Sedgwick County) before me this day of 199 by
Bob Knight, Mayor and Pat Burnett, Deputy City Clerk of the City of
Wichita, Kansas, on behalf of the City of Wichita, Kansas.

My App't Exp. Notary Public

State of Kansas) SS The foregoing instrument was acknowledged
Sedgwick County) before me this day of 199 by
Richard H. Chance, Partner and by Richard G. Chance, Partner of
Chance Properties, a Kansas general partnership.

My App't Exp. Notary Public



State of Kansas) SS The foregoing instrument was acknowledged
Sedgwick County) before me this day of 199 by
Richard H. Chance and Marjorie E. Chance, husband and wife, and
by Richard G. Chance and Carol L. Chance, husband and wife.

My App't Exp. Notary Public
Karen L. Armstrong

This plat of "CHANCE INDUSTRIAL PARK 2ND ADDITION"
Wichita, Sedgwick County, Kansas has been submitted to and approved
by the Wichita-Sedgwick County Metropolitan Area Planning Commission,
Wichita, Kansas.
Dated this day of 199
Wichita-Sedgwick County Metropolitan Area Planning Commission

Christopher J. Goebel Chairman

Marvin S. Krout Secretary

This plat approved and all dedications shown
hereon accepted by the City Council of the City of Wichita, Kansas,
this day of 199

Bob Knight Mayor

Pat Burnett Deputy City Clerk

Entered on transfer record this day of 199

County Clerk
Dor Wright

State of Kansas) ss This is to certify that this plat has been filed
Sedgwick County) for record in the office of the Register of Deeds this day of
199 at o'clock, M, and is duly
recorded.

Register of Deeds
Pat Kettler

Deputy
Ed Resa

