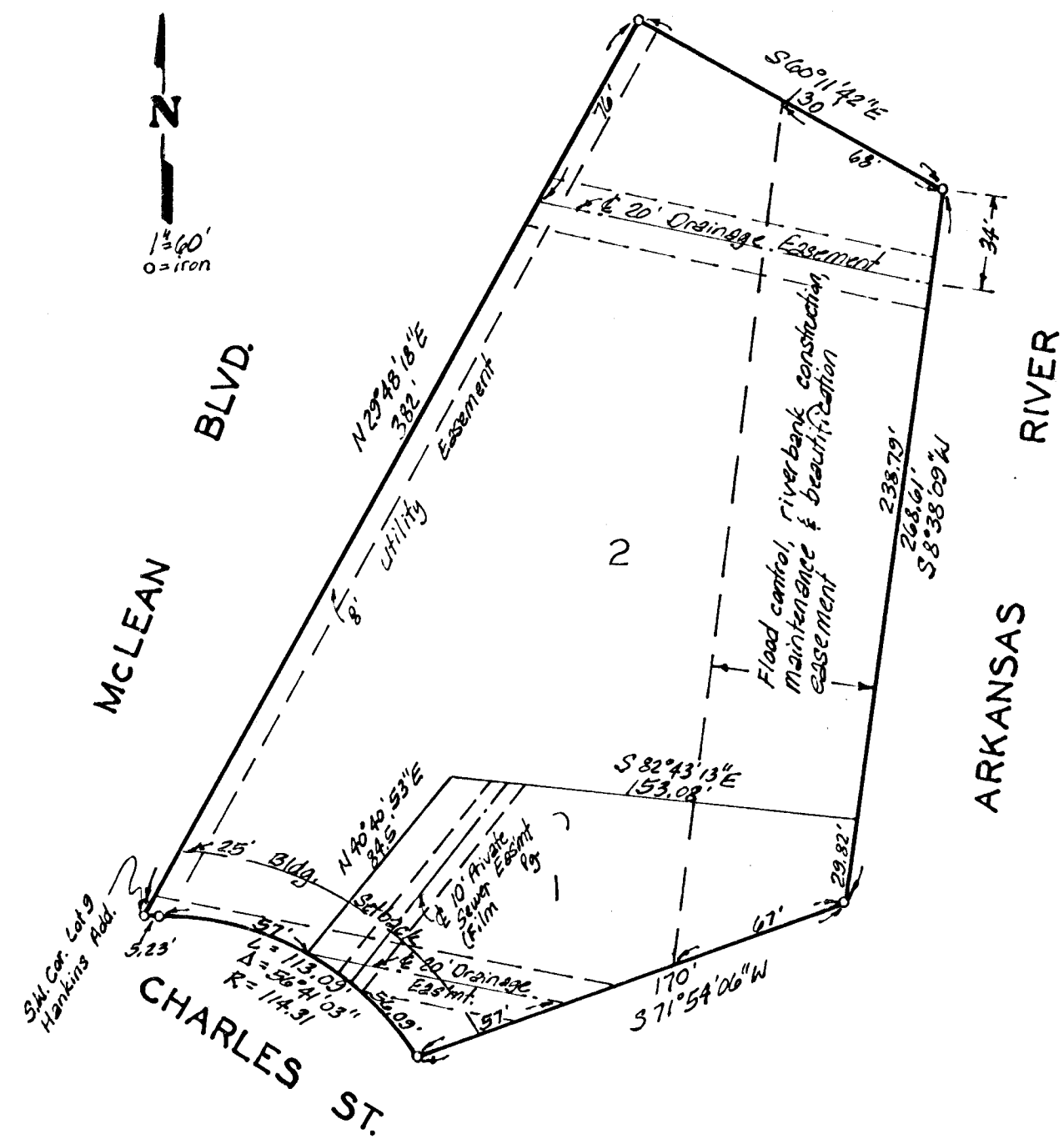


CHARLES COURT ADDITION

WICHITA, KANSAS



State of Kansas } ss. We, Baughman Company, P.A. Surveyors
 Sedgwick County } in aforesaid county and state do hereby certify that we
 have surveyed and platted "CHARLES COURT ADDITION,"
 Wichita, Kansas and that the accompanying plat is a
 true and correct exhibit of the property surveyed de-
 scribed as and being a replat of Lot 9 in Hankins
 Addition to Wichita, Sedgwick County, Kansas, except that
 part of Lot 9 lying southeasterly of a line drawn 30
 feet northwesterly from and parallel to the southeasterly
 line of said Lot 9. The flood control and riverbank con-
 struction and maintenance easement created at Film
 612, Page 208 is being vacated and released by virtue
 of K.S.A. 12-512 (b). Said property is situated in the
 S.W. 1/4 of Sec. 7, Twp. 27-S, R-1-E of the 6th P.M., Sedg-
 wick County, Kansas.

Date _____

Baughman Company P.A.

 Surveyor

Know all men by these presents
 that we, the undersigned, have caused the land de-
 scribed in the surveyors certificate to be platted
 into lots to be known as "CHARLES COURT ADDI-
 TION," Wichita, Kansas. The utility easement is here-
 by granted as indicated for the construction and
 maintenance of all public utilities. The drainage
 easements are hereby granted for drainage purposes.
 The riverbank easement is hereby granted for river-
 bank construction, maintenance and beautification.
 No structure shall be built within this easement,
 nor shall any change of grade be made without
 permission of the Wichita-Valley Center Flood
 Control Office or their successors of office.

This plat of "CHARLES COURT ADDI-
 TION," Wichita, Kansas, has been submitted to and approved
 by the Wichita-Sedgwick County Metropolitan Area Planning
 Commission, Wichita, Kansas. Dated this _____ day of
 193__.

Wichita-Sedgwick County Metropolitan Area Planning Commission

 David Bayouth Chairman

 Michael E. Lindelak Secretary

This plat approved and all dedications
 shown hereon accepted by the Board of Commissioners of
 the City of Wichita, Kansas, this _____ day of
 193__.

 Tony Cassado Mayor

 Donald C. Birk City Clerk

Entered on transfer record this
 _____ day of _____ 193__.

 Don Wright County Clerk

State of Kansas } ss. The foregoing instrument was
 Sedgwick County } acknowledged before me this _____ day of
 193__ by Wilbur F. Kruse and Mary T. Kruse,
 husband and wife.

 Notary Public

My App. Exp. _____

State of Kansas } ss. This is to certify that this
 Sedgwick County } plat has been filed for record in the office of the
 Register of Deeds this _____ day of
 193__, at _____ o'clock _____ M; and is duly recorded.

 Pat Kettler Register of Deeds

 Ed Resa Deputy