

SS M 169  
A-185  
SWS C-1

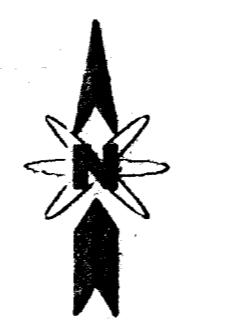
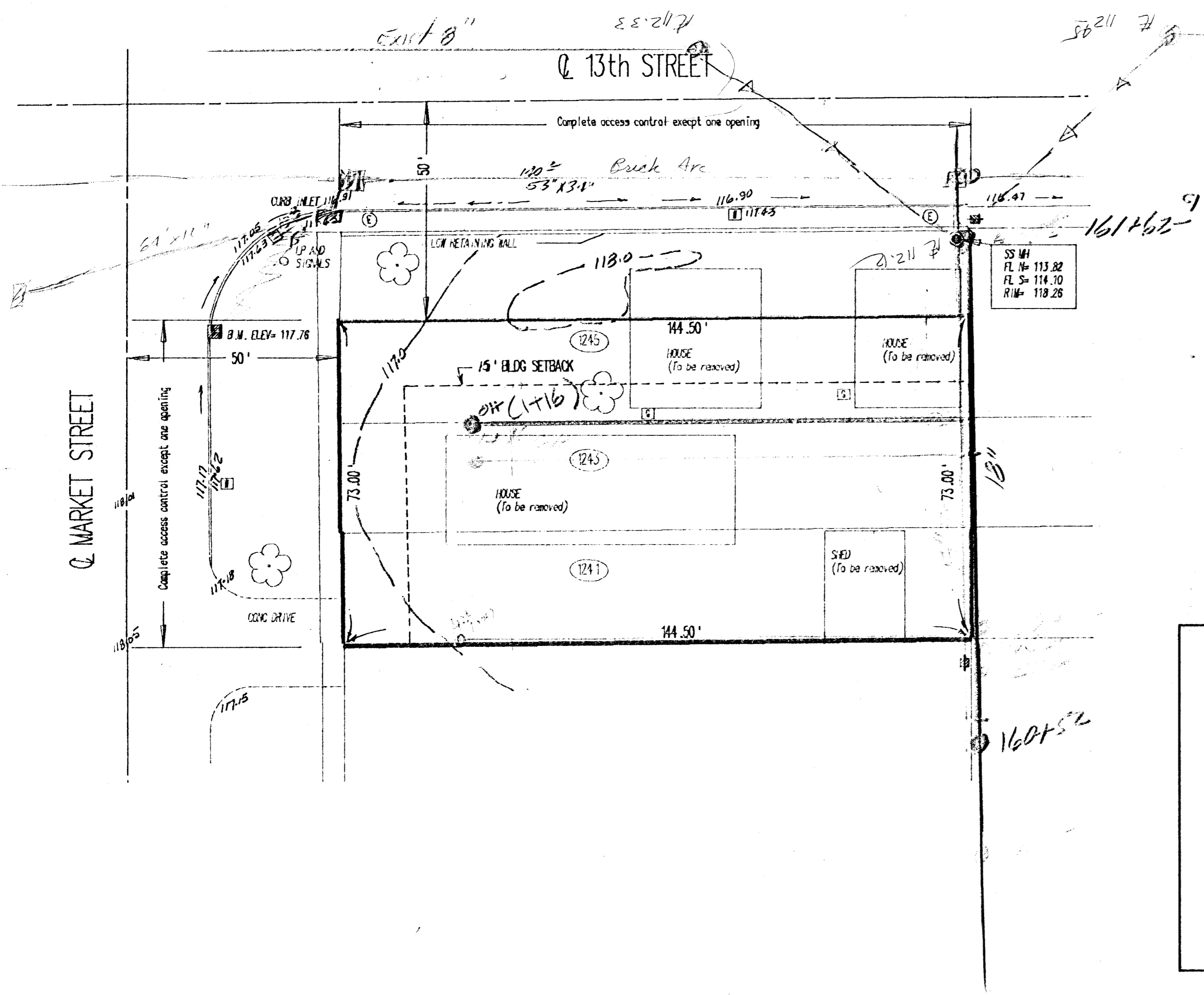
PRELIMINARY PLAT

CHAPMAN'S REPLAT

13th EL OTS TO WL St Francis  
1972

E. Sub Main "B"  
13th St. & Lot A & S.  
S.S. # 1 1889

Reconst & Relocation of SS.  
13th St.  
OTS - St. Francis



SCALE: 1"=20'

LEGEND	
	TREE
	POWERPOLE
	SANITARY SEWER MANHOLE
	ELECTRICAL MANHOLE
	WATER METER
	GAS METER

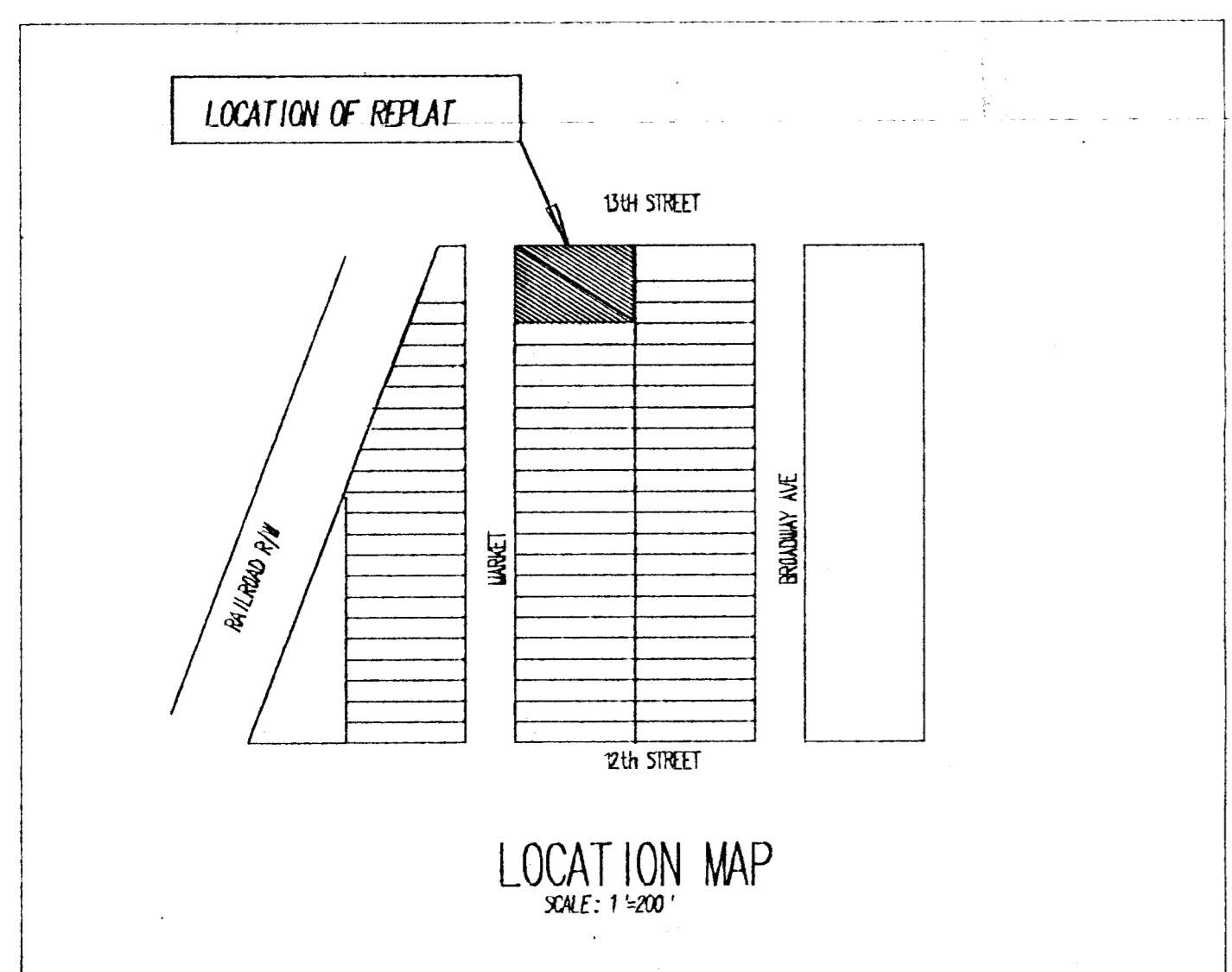
AREA - 0.242 Acres

ZONING - LC

OWNER - Patrick Chapman  
1601 N. Woodlawn  
Wichita, Kansas

ENGINEER - Dobler Surveying & Engineering  
702 E. 21st Street  
Wichita, Kansas

SURVEYED - 4/28/88



May 13, 1988

