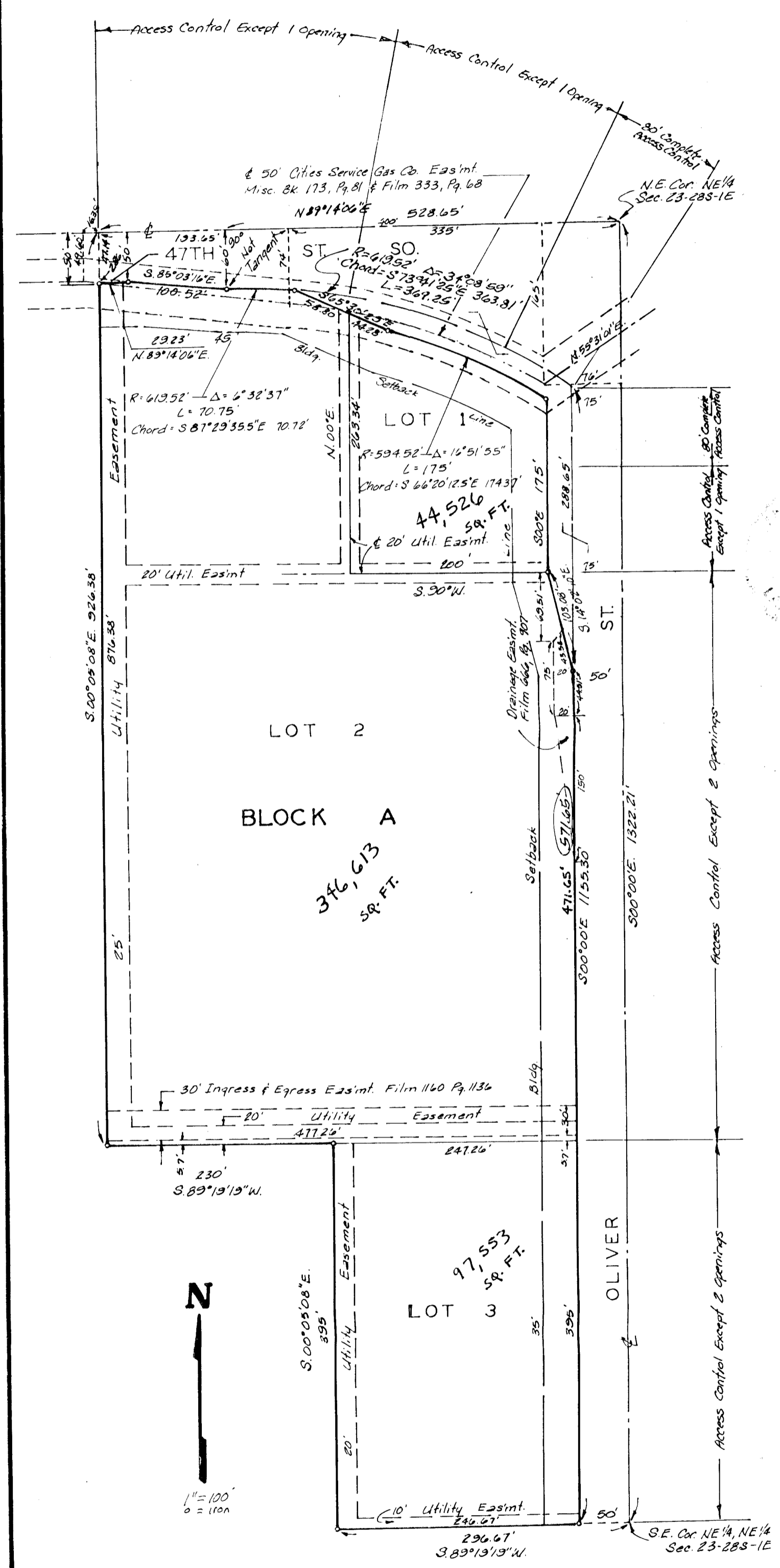
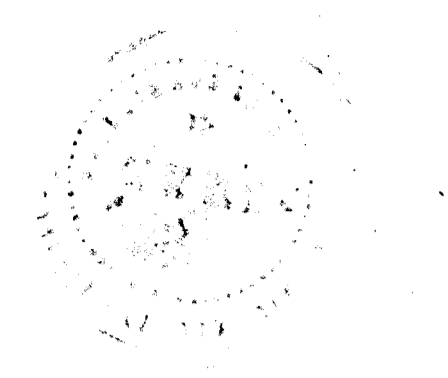


CHELSEA INDUSTRIAL PARK 2ND

SEDGWICK COUNTY, KANSAS.



State of Kansas?
 Sedgwick County, S.S. We, Baughman Company, P.A. Surveyors in aforesaid county and state do hereby certify that we have surveyed and platted "CHELSEA INDUSTRIAL PARK 2ND," Sedgwick County, Kansas and that the accompanying plat is a true and correct exhibit of the property surveyed described as the NE 1/4 of the NE 1/4 of Sec. 23, Twp. 23-S, R-1-E of the 6th, P.M., Sedgwick County, Kansas, except beginning at the N.W. Cor. of the NE 1/4 of said NE 1/4; thence east 2099 feet the north line of the NE 1/4 of said NE 1/4, 800 feet; thence south parallel with the west line of the NE 1/4 of said NE 1/4, 920.33 feet to a point 395 feet north of the south line of the NE 1/4 of said NE 1/4; thence east parallel with the south line of the NE 1/4 of said NE 1/4, 230 feet; thence south parallel with the west line of the NE 1/4 of said NE 1/4; 395 feet to the south line of the NE 1/4 of said NE 1/4; thence west, 1023.99 feet to the S.W. Corner of the NE 1/4 of said NE 1/4; thence north 1320.17 feet to beginning.
 The Streets being vacated by virtue of K.S.A. 12-512(b)

4 SEP 86 Date
 Baughman Company, P.A.
 Mark A. Sawyer Surveyor

Know all men by these presents that we, the undersigned, have caused the land described in the Surveyors certificate to be platted into Lots a Block and Streets to be known as "CHELSEA INDUSTRIAL PARK 2ND," Sedgwick County, Kansas. The utility easements are hereby granted as indicated for the construction and maintenance of all public utilities. The streets are hereby dedicated to and for the use of the public. All egress rights of access to or from 47th St So. over and across the north line of Lots 1 and 2, and to or from Oliver St. over and across the east line of Lots 1, 2 and 3 are hereby granted to the appropriate governing body, provided however that Lot 1 shall have access to 47th St So. at one point over all except the easterly 80 feet of the north line thereof and shall have access to Oliver St. at one point over all except the north 80 feet of the east line thereof and Lot 2 shall have access to 47th St So. at one point over the north line and shall have access to Oliver Street at two points over the east line and Lot 3 shall have access to Oliver St. at two points over the east line, all as shall be determined by the engineer of the appropriate governing body.

Jeffrey S. Greenberg C. Lynne Greenberg

State of Kansas?
 Sedgwick County, S.S. The foregoing instrument was acknowledged before me, this 4th day of September 1986 by Jeffrey S. Greenberg and C. Lynne Greenberg, his wife.

My Appt. Exp. 12 May 88
 Mark A. Sawyer Notary Public

This plat of "CHELSEA INDUSTRIAL PARK 2ND," Sedgwick County, Kansas, has been submitted to and approved by the Wichita-Sedgwick County Metropolitan Area Planning Commission, Wichita, Kansas.
 Dated this 1st day of May 1986.
 Wichita-Sedgwick County Metropolitan Area Planning Commission

Chairman
 Secretary
 Michael E. Underbak

This plat approved and all dedications shown hereon accepted by the Board of Commissioners of the City of Wichita, Kansas this day of 1987.

Mayor
 Deputy City Clerk
 D.W. G. ROA

This plat approved and all dedications shown hereon accepted by the Board of Commissioners of Sedgwick County, Kansas, this day of 1986.

Chairman
 Commissioner
 Commissioner
 Commissioner
 County Clerk

Entered on transfer record this day of 1986.

County Clerk

State of Kansas?
 Sedgwick County, S.S. This is to certify that this plat has been filed for record in the office of the Register of Deeds the day of 1986 at o'clock M; and is duly recorded.

Register of Deeds
 Deputy