

"JAMESBURG PARK ADD."

KEITH ST.

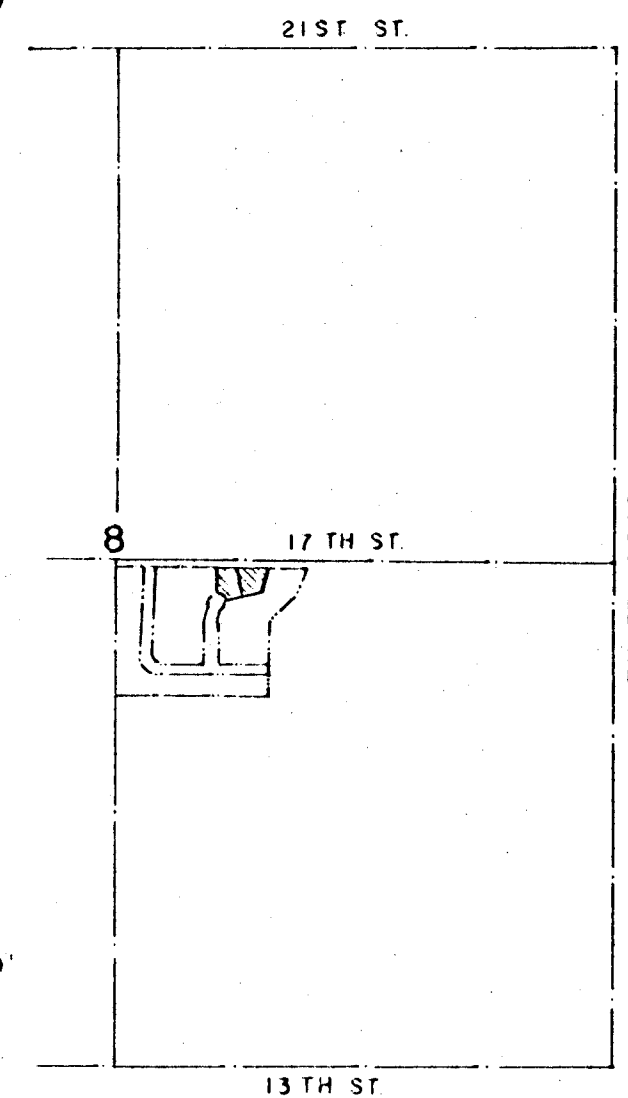
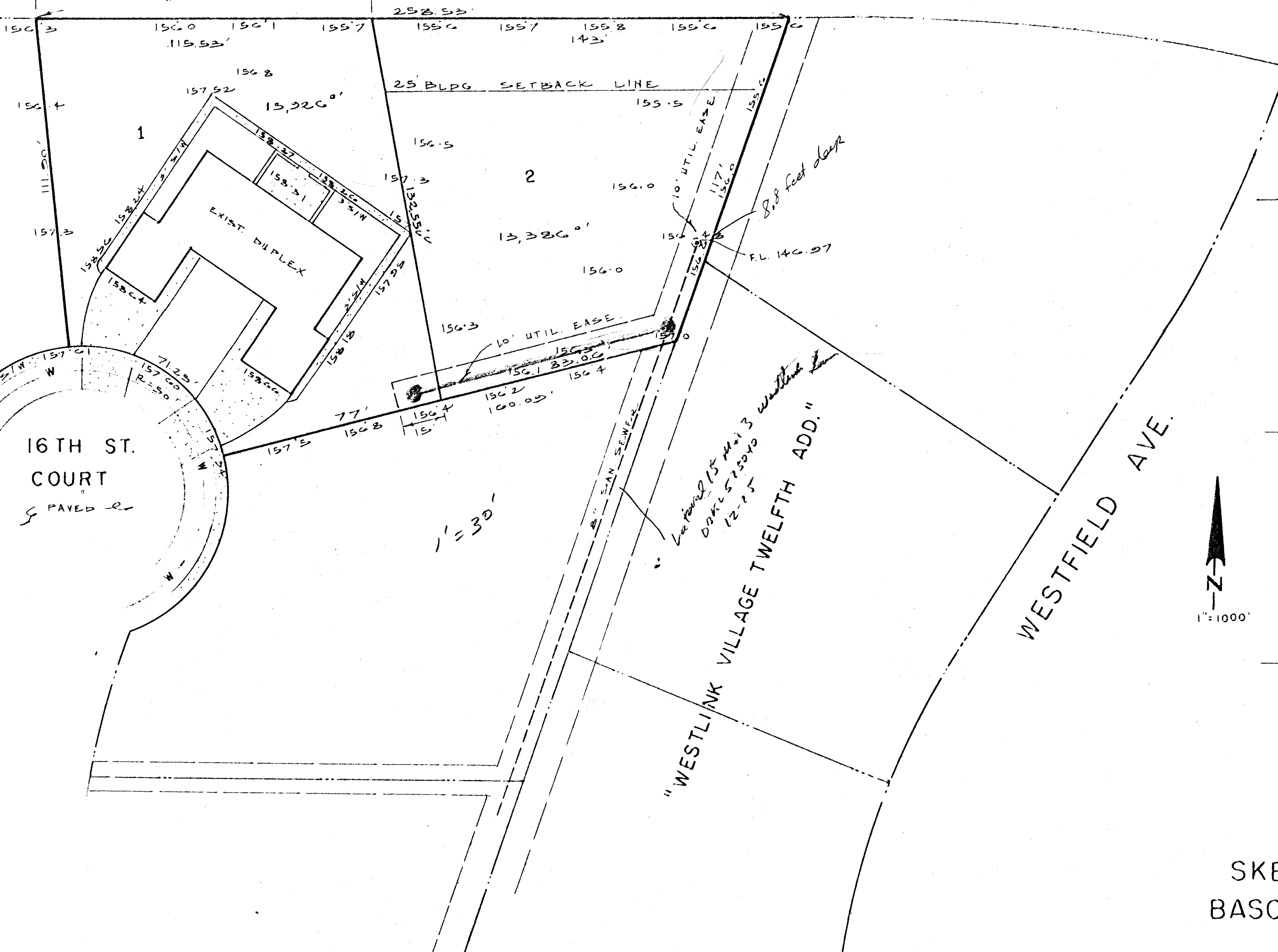
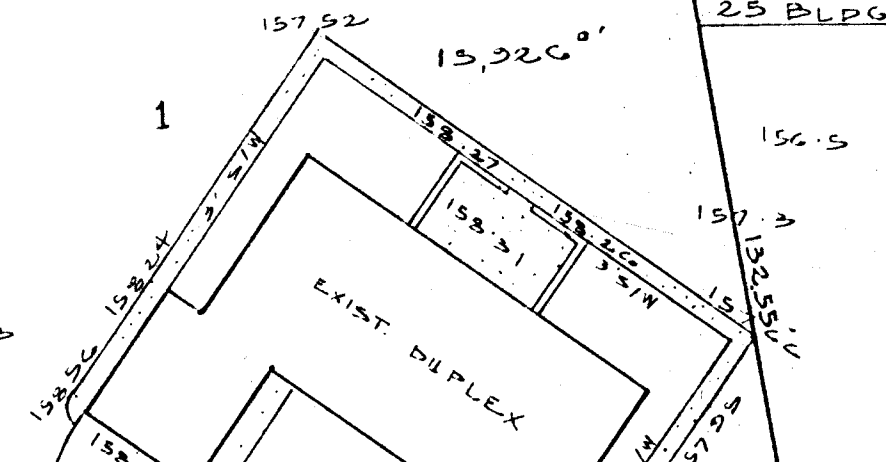
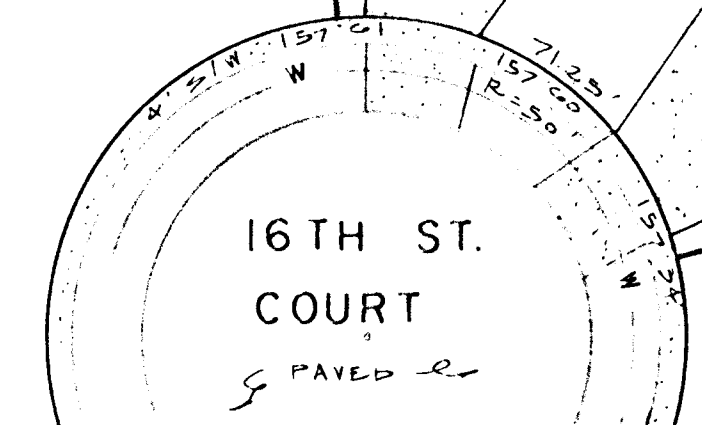
17 TH ST. NORTH

N.E. 1/4 SEC 8-27-1W

COMPLETE ACCESS CONTROL 12" WATER LINE



M-287



SKETCH PLAT
BASCUE ADDITION

B.M. - ELEV. 155.46 : "D" ON T.C. AT S.E. COR. OF 17TH & WESTFIELD, E. OF INLET

TOPO MADE AUGUST 4, 1981

LOWELL D. HIGH, L.S.
SEPTEMBER 14, 1981