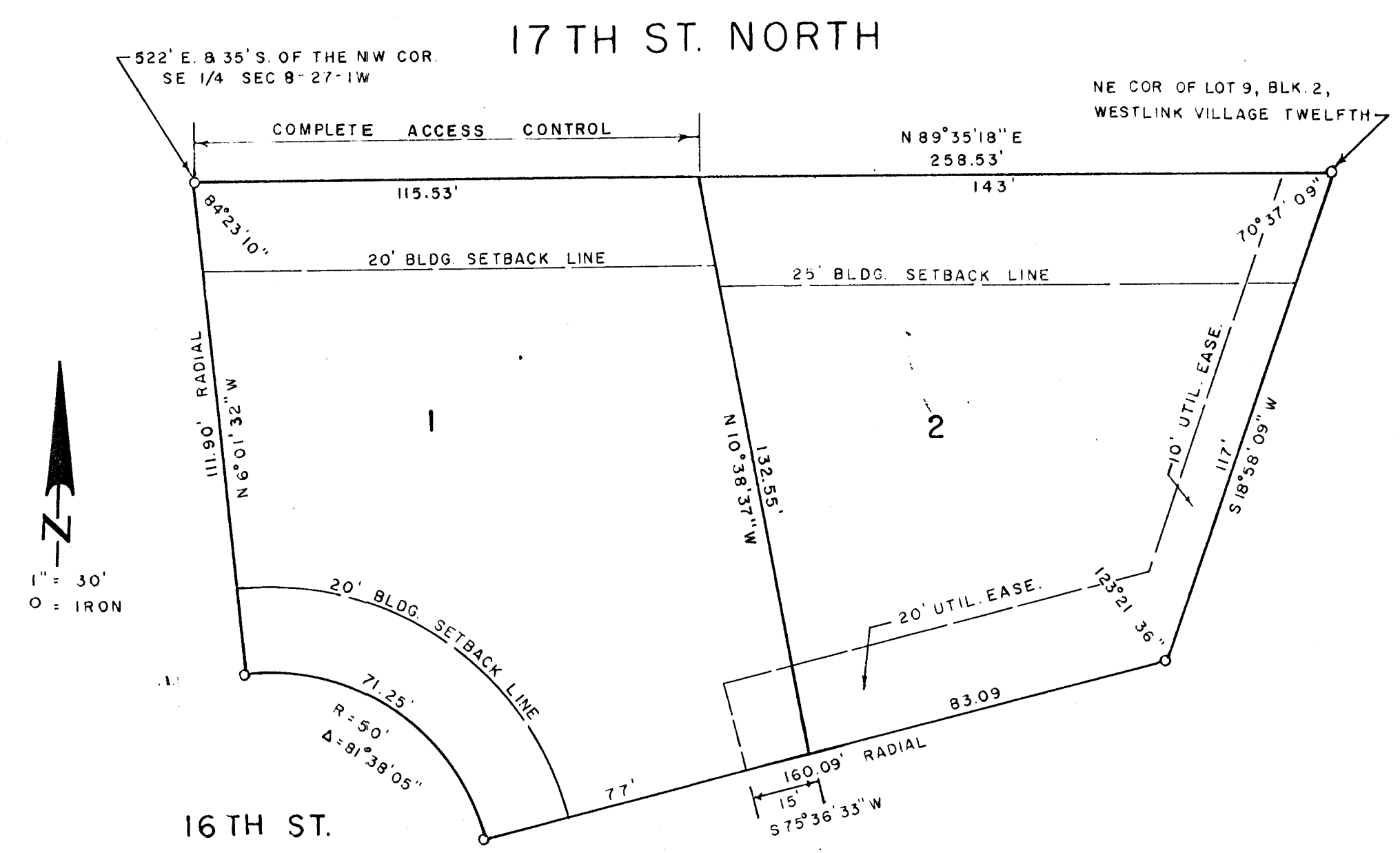


# BASCUE ADDITION

WICHITA, SEDGWICK COUNTY, KANSAS



16TH ST. COURT

This plat approved and all dedications shown hereon accepted by the Board of City Commissioners of the City of Wichita, Kansas, this 9th day of MARCH, 1982.

Tony Casarez Mayor  
Donald G. Gisick City Clerk

This plat approved and all dedications shown hereon accepted by the Board of County Commissioners of Sedgwick County, Kansas, this \_\_\_\_\_ day of \_\_\_\_\_, 1982.

\_\_\_\_\_, Chairman  
JACK SPRATT  
 \_\_\_\_\_, Commissioner  
TOM SCOTT  
 \_\_\_\_\_, Commissioner  
DONALD E. GRAGG

\_\_\_\_\_, County Clerk  
Dorothy K. White  
 Entered on transfer record this \_\_\_\_\_ day of \_\_\_\_\_, 19\_\_\_\_.  
 \_\_\_\_\_, County Clerk  
Dorothy K. White

State of Kansas, County of Sedgwick, SS.  
 This is to certify that this instrument was filed for record in the Register of Deeds Office at \_\_\_\_\_ o'clock \_\_\_\_\_ m., on the \_\_\_\_\_ day of \_\_\_\_\_, 19\_\_\_\_.  
 \_\_\_\_\_, Register of Deeds  
Bette F. McCart  
 \_\_\_\_\_, Deputy  
Pat Kettler

State of Kansas, County of Sedgwick, SS.  
 I, Lowell D. High, Land Surveyor in said State and County do hereby certify that I have surveyed and platted "BASCUE ADDITION", Wichita, Sedgwick County, Kansas and that the accompanying plat is A REPLAT OF and a true and correct exhibit of said survey described as follows: Lot 9, Block 2, Westlink Village Twelfth Addition, Wichita, Sedgwick County, Kansas. The access control to 17th Street on the east 143 feet of said Lot 9 being vacated by virtue of K.S.A. 12-512(b).

Lowell D. High, Land Surveyor  
 Lowell D. High 1-21-82

Know all men by these presents that I, Betty J. Bascue, a single person, has caused the land described in the Land Surveyor's certificate to be platted into lots to be known as "BASCUE ADDITION", Wichita, Sedgwick County, Kansas. Utility easements as indicated on the plat are hereby granted for the construction and maintenance of all public utilities.

All abutters rights of access to or from 17th St. North, over and across the north line of Lot 1 is hereby granted to the City of Wichita.

Betty J. Bascue  
 Betty J. Bascue

State of Kansas, County of Sedgwick, SS.  
 The foregoing instrument was acknowledged before me this 16th day of FEBRUARY, 1982, by Betty J. Bascue, a single person.  
 \_\_\_\_\_, Notary Public

My Commission expires: 12/15/82

Mid Kansas Federal Savings and Loan Association of Wichita, by Richard B. Stearns, 1103 DEER CREEK mortgagee of the land described in the Land Surveyor's certificate, does hereby consent to the platting of "BASCUE ADDITION", Wichita, Sedgwick County, Kansas.

Mid Kansas Federal Savings and Loan Association of Wichita  
Richard B. Stearns, Vice-President

ATTEST:  
Don McPrestel, 2-16-82  
 SECRETARY  
 State of Kansas, County of Sedgwick, SS.

The foregoing instrument was acknowledged before me this 16th day of FEBRUARY, 1982, by RICHARD B. STEARNS, VICE PRESIDENT of Mid Kansas Federal Savings and Loan Association of Wichita, a Kansas corporation, on behalf of the corporation.

\_\_\_\_\_, Notary Public

My Commission expires: 12/15/82

This plat of "BASCUE ADDITION", Wichita, Sedgwick County, Kansas has been submitted to and approved by the Wichita-Sedgwick County Metropolitan Area Planning Commission, Wichita, Kansas.

Dated this 14th day of JANUARY, 1982.

Wichita-Sedgwick County Metropolitan Area Planning Commission  
James E. Gardner II, Chairman  
Robert A. Lakin, Secretary