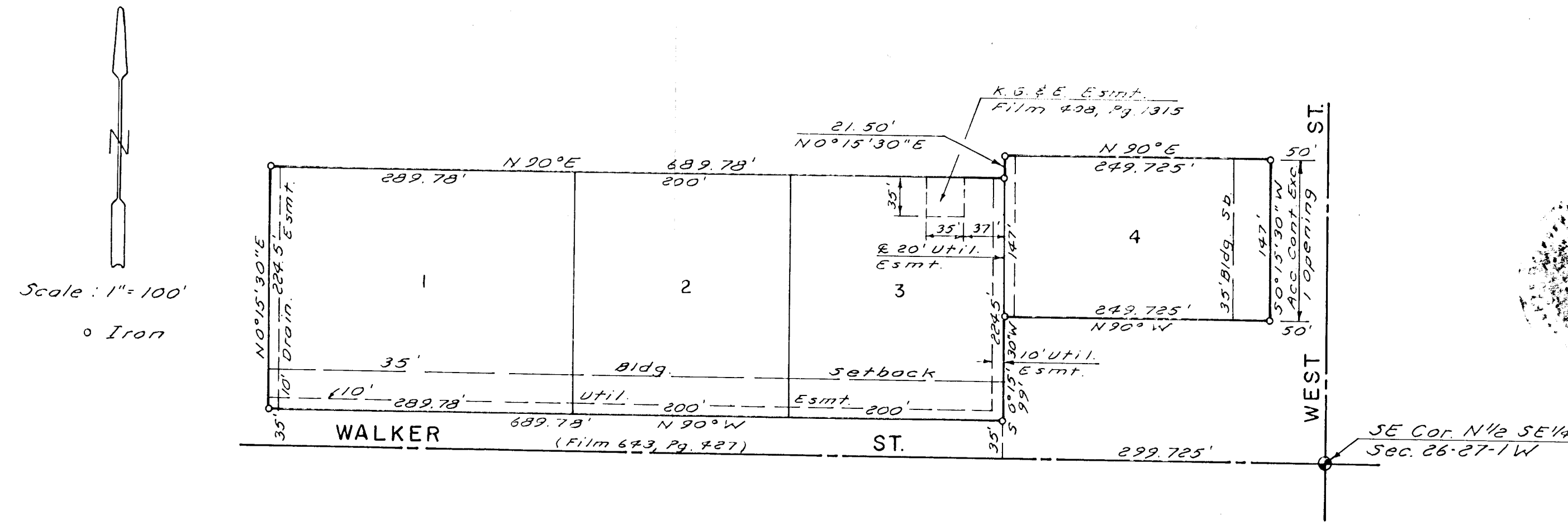


Industrial 2nd
Batson Addition

BATSON INDUSTRIAL 2ND ADDITION

WICHITA, KANSAS



State of Kansas } S.S. We, Baughman Company, P.A.,
 Sedgwick County }
 surveyors in aforesaid county county and state, do
 hereby certify that we have surveyed and platted
 "BATSON INDUSTRIAL 2ND ADDITION", Wichita, Kansas;
 and that the accompanying plat is a true and
 correct exhibit of the property surveyed, des-
 cribed as beginning at a point 222.725 feet west
 and 35 feet north of the SE corner of the N1/4
 of the SE1/4 of Section 26, T27S, R1 W of the 6th
 R.M., Sedgwick County, Kansas; thence westerly,
 parallel with the south line of said N1/4, 689.78
 feet; thence northerly, parallel with the east line
 of said N1/4, 224.50 feet; thence easterly, parallel
 with the south line of said N1/4, 689.78 feet; thence
 northerly, parallel with the east line of said N1/4,
 21.50 feet; thence easterly, parallel with the
 south line of said N1/4, 249.725 feet; thence
 southerly, parallel with the east line of said N1/4,
 147 feet; thence westerly, parallel with the south
 line of said N1/4, 249.725 feet; thence southerly,
 parallel with the east line of said N1/4, 99 feet
 to the point of beginning.

Date July 15, 1985 Baughman Company, P.A.
John E. Lundblade Surveyor
 John E. Lundblade

This plat of "BATSON INDUSTRIAL 2ND
 ADDITION", Wichita, Kansas, has been sub-
 mitted to and approved by the Wichita-
 Sedgwick County Metropolitan Area Planning
 Commission, Wichita, Kansas, dated this
 day of April, 1985.

Wichita-Sedgwick County Metropolitan
 Area Planning Commission
James E. Wittson Chairman
Mark H. Gortlieb Asst. Secretary

This plat approved and all dedications
 shown hereon accepted by the Board of City
 Commissioners, Wichita, Kansas, this 17th
 day of AUG, 1985.

John Brown Mayor
Donald G. Greck City Clerk

Entered on transfer record this
 day of _____, 1985.

Don Wright County Clerk

Know all men by these presents, that we, the
 undersigned, have caused the land described in
 the surveyors certificate to be platted into lots
 to be known as "BATSON INDUSTRIAL 2ND ADDITION",
 Wichita, Kansas. The easements are hereby granted
 as indicated for the construction and maintenance
 of public utilities. The drainage easement is here-
 by granted for drainage purposes. All abutters
 rights of access to West St. are hereby granted
 to the City of Wichita, Kansas, except, however,
 that Lot 4 shall have access to West St. at
 one location, said location to be determined by
 the City Engineer.

Batson Properties, a partnership
Dale O. Batson Managing Partners
Faye Batson

State of Kansas } S.S. The foregoing instrument was
 Sedgwick County }
 acknowledged before me this 16th day of July,
 1985, by Dale O. Batson and Faye Batson, his wife,
 Managing Partners for Batson Properties, a part-
 nership, on behalf of the partnership.

Mark A. Sawyer Notary Public
 My Commission Expires 12 May 1988

State of Kansas } S.S. This is to certify that
 Sedgwick County }
 this plat has been filed for record in the
 Office of the Register of Deeds this
 day of _____, 1985, at _____ o'clock, _____ M.,
 and is duly recorded.

Pat Kettler Register of Deeds
Ed Rosa Deputy