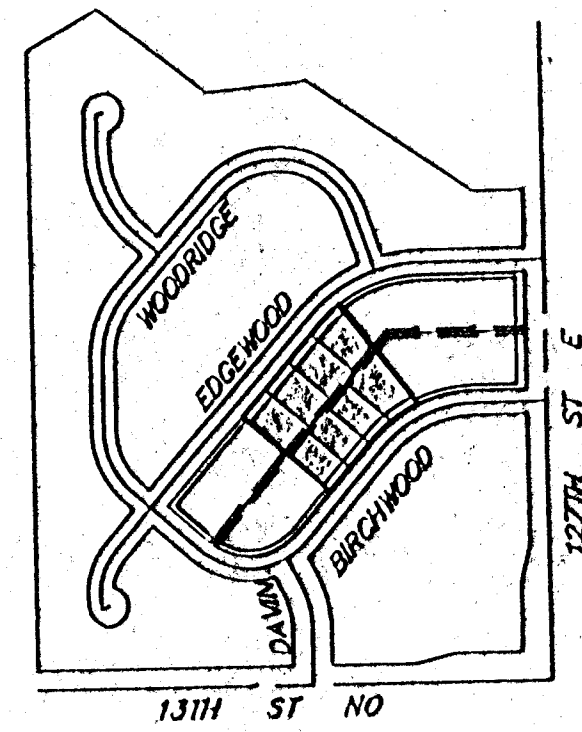


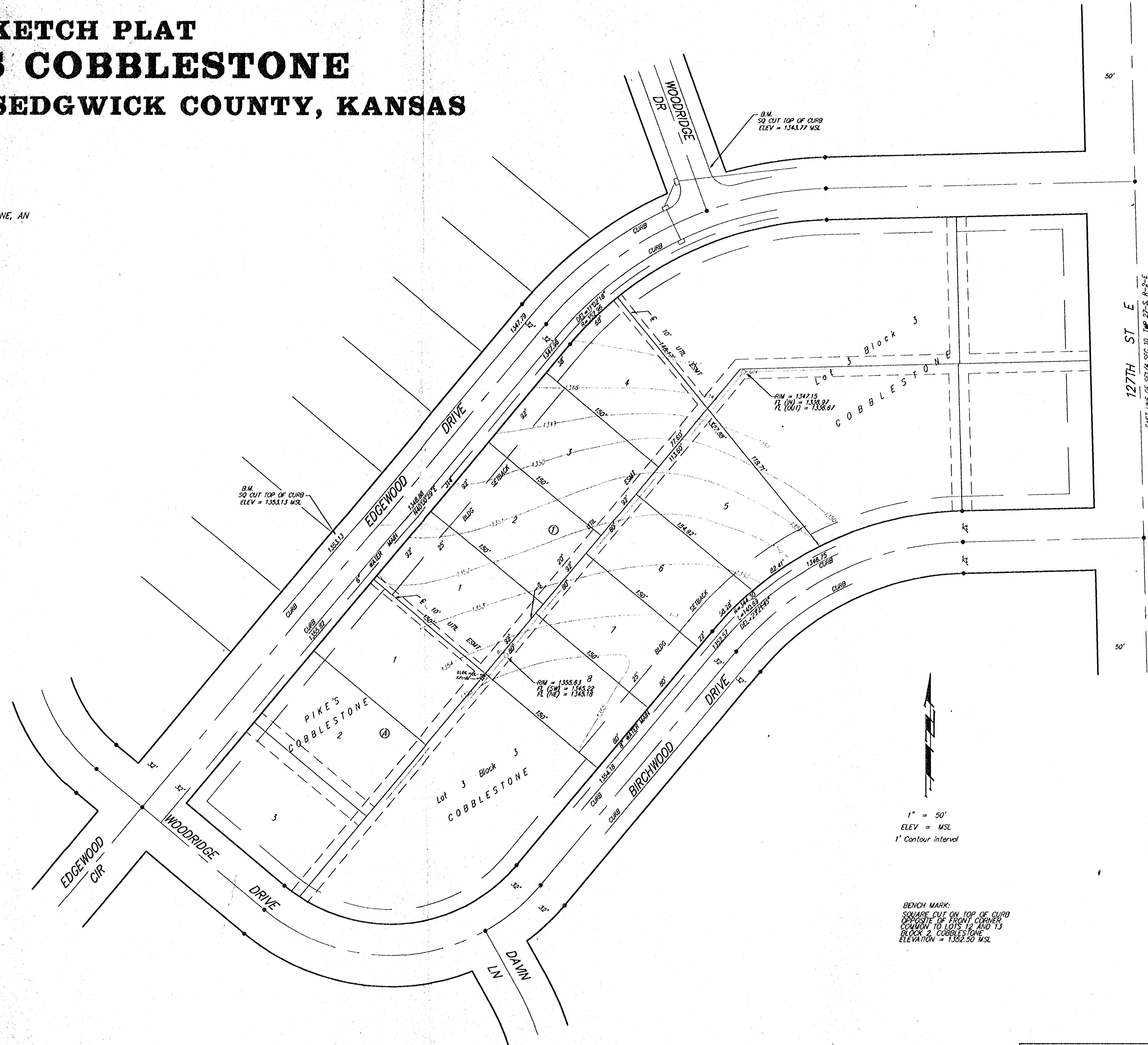
# SKETCH PLAT BAUER'S COBBLESTONE AN ADDITION TO SEDGWICK COUNTY, KANSAS

A REPLAT OF LOT 2, BLOCK 3, COBBLESTONE, AN  
ADDITION TO SEDGWICK COUNTY, KANSAS.

HAROLD V. BAUER  
6572 E. CENTRAL  
SUITE 204  
WICHITA, KS 67206  
(316) 683-1492



VICINITY PLAT



1" = 50'  
ELEV = MSL  
1' Contour Interval

BENCH MARK:  
SQUARE CUT ON TOP OF CURB  
OPPOSITE OF FRONT CORNER  
COMMON TO LOTS 12 AND 13  
BLOCK 2, COBBLESTONE  
ELEVATION = 1352.50 MSL

127TH ST E  
EAST LINE OF SE1/4 SEC 10, T4P 27-S, R-2-E