

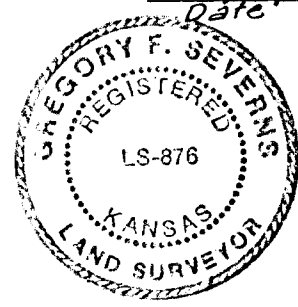
BAUGHER ADDITION

WICHITA, KANSAS

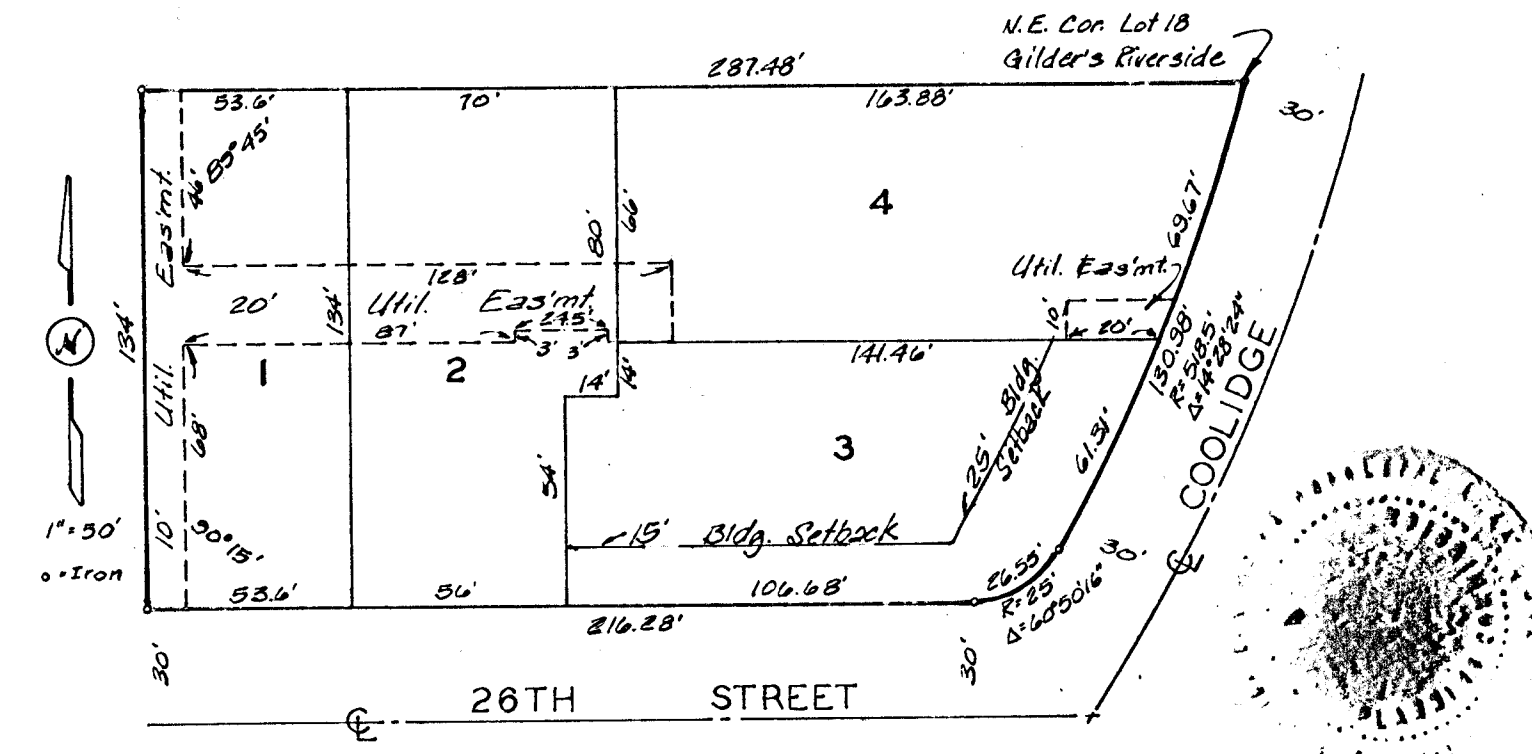
State of Kansas 33
Sedgwick County 33 We, Baughman Company P.A.,
Surveyors in aforesaid county and state, do hereby
certify that we have surveyed and platted
"BAUGHER ADDITION" Wichita, Kansas, and that the
accompanying plat is a true and correct exhibit
of the property surveyed, described as and being a
replat of Lot 18, Alder's Riverside, Sedgwick County,
Kansas. All being situated in the NE 1/4 of Sec. 6,
Twp. 21-S, R-1-E.

9/9/86
DATE

Baughman Company P.A.



Gregory F. Severns
Gregory F. Severns



Know all men by these presents that
We, the undersigned, have caused the land described
in the surveyors certificate to be platted into Lots
to be known as "BAUGHER ADDITION", Wichita,
Kansas. The utility easements are hereby granted
as indicated for the construction and maintenance
of all public utilities.

Edward Lee Baughner

Marjorie Helen Baughner

State of Kansas 33
Sedgwick County 33 The foregoing instrument was
acknowledged before me this _____ day of _____
1986, by Edward Lee Baughner and Marjorie Helen
Baughner, husband and wife.

Notary Public

My App't. Exp. _____

This plat of "BAUGHER ADDITION",
Wichita, Kansas, has been submitted to and approved
by the Wichita-Sedgwick County Metropolitan Area
Planning Commission, Wichita, Kansas.
Dated this 9th day of January 1986.

Wichita-Sedgwick County Metropolitan Area Planning Commission

David Bayouth
DAVID BAYOUTH Chairman

Michael E. Lindabak
Michael E. Lindabak Secretary

This plat approved and all dedi-
cations shown hereon accepted by the Board of
Commissioners of the City of Wichita, Kansas, this
14th day of Oct 1986.

Tony Carole
Tony Carole Mayor

Donald S. Strick
Donald S. Strick City Clerk

Entered on transfer record this
_____ day of _____ 1986.

State of Kansas 33 This is to certify that this plat
Sedgwick County 33 has been filed for record in the office of the
Register of Deeds this _____ day of _____ 1986,
and is duly recorded

Pat Kattler Register of Deeds

Ed Ross Deputy