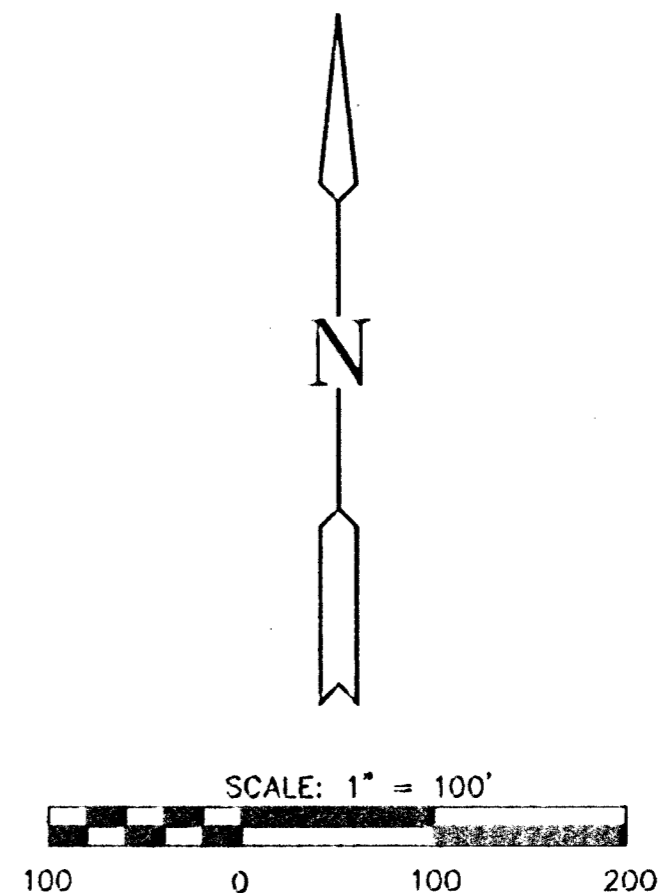
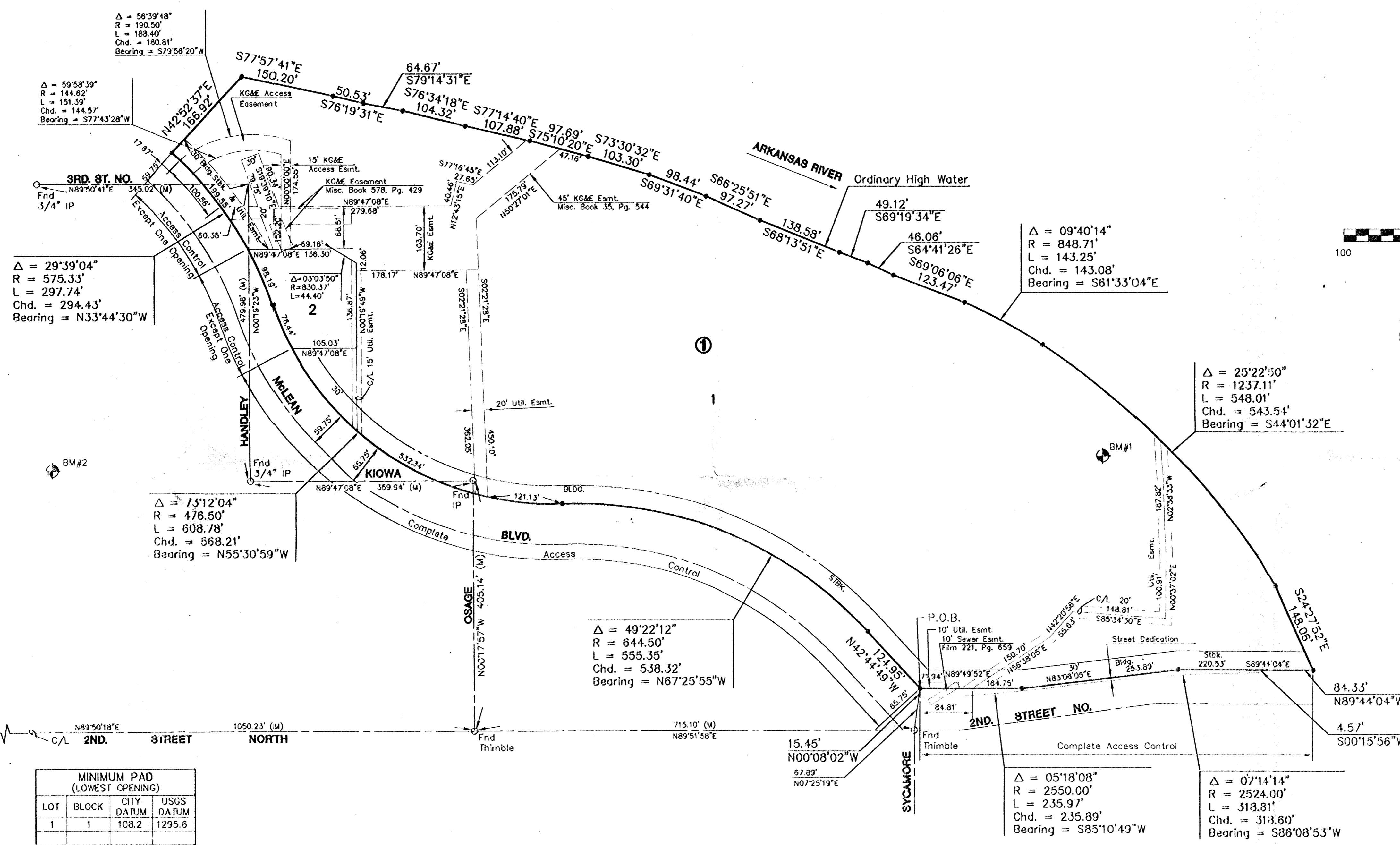


FINAL PLAT

EXPLORATION PLACE ADDITION

AN ADDITION TO WICHITA, SEDGWICK COUNTY, KANSAS



SW Cor., NW 1/4
Sec. 20, T27S, R1E

MINIMUM PAD (LOWEST OPENING)			
LOT	BLOCK	CITY DATUM	USGS DATUM
1	1	108.2	1295.6

BENCHMARKS

BM#1 \lceil Cut on top of North Retaining Wall @ Rest area on East side of Mclean North of 2nd.
Elev.=116.69

BM#2 \lceil Cut in top of curb @ East end of return, Northeast cor. Walnut & Kiowa
Elev.=110.04

FINAL PLAT
EXPLORATION PLACE ADDITION
 AN ADDITION TO WICHITA, SEDGWICK COUNTY, KANSAS

I, Kenneth H. Bengtson, a Civil Engineer and Registered Land Surveyor in Kansas, do hereby certify that I have been in responsible charge of surveying and platting of "EXPLORATION PLACE ADDITION", an addition to Wichita, Sedgwick County, Kansas, into lots, a block, and street the same being accurately set forth in the accompanying plat and described herein:

A replat of parts of or all of the following:

Reserve A, in Ford's Sixth Addition to the City of Wichita, Sedgwick County, Kansas.

Lots 140, 142, 144, 146, 148, 150, 152, 154, 156, 158, 160, 162, 164, 166, and 168 on Wichita Street, now Handley Street, in Niederlander's Addition to West Wichita, Sedgwick County, Kansas.

Lots 137, 139, 141, 143, 145, 147, 149, 151, 153, 155, 157, 159, and 161 on Osage Street, in Niederlander's Addition to West Wichita, Sedgwick County, Kansas.

Part of Reserve C, in Niederlander's Addition to West Wichita, Sedgwick County, Kansas, lying north of Second Street, as established by City of Wichita Ordinance #5785 and the Right of Way Easement filed on Film 552, Page 583.

Lots 1 and 2, Ackerman Addition to Wichita, Sedgwick County, Kansas.

That portion of the Northwest Quarter of Section 20, Township 27 South, Range 1 East of the Sixth Principal Meridian, Sedgwick County, Kansas shown as McLean Boulevard by the recorded plat of Ackerman Addition as conveyed from the State of Kansas to the City of Wichita in the Deed filed in Book 474, Page 338.

A portion of vacated Osage Street and the vacated alley lying between Wichita Street, now Handley Street and Osage Street, as platted in Niederlander's Addition to West Wichita, Sedgwick County, Kansas.

That portion of the above and the unplatted land all located in the Northwest Quarter of Section 20, Township 27 South, Range 1 East of the Sixth Principal Meridian, Sedgwick County, Kansas and more particularly described as following:

Commencing at the Southwest corner of the Northwest Quarter of Section 20, Township 27 South, Range 1 East of the 6th P.M., Sedgwick County, Kansas, thence on as assumed bearing of N 0° 17' 57" W, 2.79 feet along the West line of said Northwest Quarter to the centerline of 2nd Street North; thence N 89° 50' 18" E, 1050.23 feet along the centerline of 2nd Street North to a thimble located at the intersection of Second Street North and Osage; thence N 89° 51' 58" E, 715.10 feet along the centerline of Second Street North to a thimble located at the intersection of Second Street North and Sycamore; thence N 07° 25' 19" E, 67.89 feet to the point of beginning; thence N 42° 44' 49" W, 124.95 feet to a point on a curve to the left; thence along said curve 555.35 feet, said curve having a central angle of 49° 22' 12", a radius of 844.50 feet, and a long chord of 538.32 feet, bearing N 87° 25' 55" W to a point on a curve to the right; thence along said curve 608.78 feet, said curve having a central angle of 73° 12' 04", a radius of 476.50 feet, and a long chord of 568.21 feet, bearing N 55° 50' 39" W to a point on a curve to the left; thence along said curve 297.74 feet, said curve having a central angle of 29° 39' 04", a radius of 575.33 feet, and a long chord of 294.43 feet, bearing N 33° 44' 30" W, thence N 42° 52' 37" E, 166.92 feet; thence S 77° 57' 41" E, 150.20 feet; thence S 76° 19' 31" E, 50.53 feet; thence S 79° 14' 31" E, 67.87 feet; thence S 76° 34' 18" E, 104.32 feet; thence S 77° 14' 40" E, 107.88 feet; thence S 75° 10' 20" E, 97.69 feet; thence S 73° 30' 32" E, 103.30 feet; thence S 69° 31' 40" E, 98.44 feet; thence S 66° 25' 51" E, 97.27 feet; thence S 68° 13' 51" E, 138.58 feet; thence S 69° 19' 34" E, 49.12 feet; thence S 64° 41' 26" E, 46.06 feet; thence S 69° 06' 06" E, 123.47 feet to a point on a curve to the right; thence along said curve 143.25 feet, said curve having a central angle of 09° 40' 14", a radius of 848.71 feet, and a long chord of 143.08 feet, bearing S 61° 33' 04" E to a point on a curve to the right; thence along said curve 548.01 feet, said curve having a central angle of 25° 22' 50", a radius of 1237.11 feet, and a long chord of 543.54 feet, bearing S 44° 01' 32" E; thence S 24° 27' 52" E, 148.06 feet; thence N 89° 44' 04" W, 84.33 feet; thence S 00° 15' 56" W, 4.57 feet to a point on a curve to the left; thence along said curve 318.81 feet, said curve having a central angle of 07° 14' 14", a radius of 2524.00 feet, and a long chord of 318.60 feet, bearing S 86° 08' 53" W to a point on a curve to the right; thence along said curve 235.97 feet, said curve having a central angle of 05° 18' 08", a radius of 2550.00 feet, and a long chord of 235.69 feet, bearing S 85° 10' 49" W, thence N 00° 08' 02" W, 15.45 feet to the point of beginning.

All lots, blocks, streets, utility easements, drainage easements, access control, rail-road right of way, within the above described property are hereby vacated and replatted by virtue of K.S.A. 12-512(b).

I hereby certify that the details of this plat are correct to the best of my knowledge and belief this 21 day of April, 1997.

Kenneth H. Bengtson
 Kenneth H. Bengtson, P.E., R.L.S. 1922
 Mid-Kansas Engineering Consultants, Inc.
 411 North Webb Road
 Wichita, KS 67206

Know all men by these presents that we the undersigned property owners of the land above set forth in the Civil Engineer's and Registered Land Surveyor's Certificate, have caused the same to be surveyed and platted into lots, a block, and street the same to be known as "EXPLORATION PLACE ADDITION", an addition to Wichita, Sedgwick County, Kansas. The street is dedicated to and for the use of the public. Easements for the construction and maintenance of public utilities and drainage, are hereby granted to the public by the City of Wichita. All abutters right of access to or from McLean over and across the Southwesterly line of EXPLORATION PLACE ADDITION, are hereby granted to the public, provided however Lot 1 shall have access to McLean at four locations and Lot 2 shall have access to McLean at one location, as determined by the City Engineer. The KG&E Easements are hereby dedicated for KG&E transmission lines to Kansas Gas & Electric its successors and assigns. The location of said easements are acknowledged herewith. The KG&E access easement is dedicated to KG&E for access to Lot 2 and acknowledged herewith. Minimum pads are as indicated on the face of the plat.

THE CITY OF WICHITA, a municipal corporation
Bob Knight
 Bob Knight, Mayor

STATE OF KANSAS)
) ss:
 SEDGWICK COUNTY)

BE IT REMEMBERED, that on this 21 day of April, 1997, before me the undersigned, a Notary Public in and for the County and State aforesaid, came Bob Knight, Mayor of The City of Wichita, a municipal corporation, to me personally known to be the same person who executed the foregoing instrument of writing and duly acknowledged the execution of the same.

IN WITNESS WHEREOF, I have hereunto set my hand and affixed my official seal, the day and year last above written.

Sandra K. Swider
 Notary Public
 My appointment expires: _____
 SANDRA K. SWIDER
 NOTARY PUBLIC
 STATE OF KANSAS
 MY COMM. EX. DEC. 28, 1997

KANSAS GAS AND ELECTRIC COMPANY
William B. Moore
 William B. Moore, Chairman of the Board

STATE OF KANSAS)
) ss:
 SEDGWICK COUNTY)

BE IT REMEMBERED, that on this 22nd day of May, 1997, before me the undersigned, a Notary Public in and for the County and State aforesaid, came William B. Moore, Chairman of the Board of Kansas Gas & Electric Company, to me personally known to be the same person who executed the foregoing instrument of writing and duly acknowledged the execution of the same.

IN WITNESS WHEREOF, I have hereunto set my hand and affixed my official seal, the day and year last above written.

Connie E. Veighe
 Notary Public
 Connie E. Veighe
 My appointment expires: July 19, 2000
 CONNIE E. VEIGHE
 NOTARY PUBLIC
 STATE OF KANSAS
 MY COMM. EX. DEC. 28, 1997

This plat of "EXPLORATION PLACE ADDITION", has been submitted to and approved by the Wichita-Sedgwick County Metropolitan Area Planning Commission, Wichita, Kansas.

Dated this 27th day of JUNE, 1996.

WICHITA-SEGDWICK COUNTY METROPOLITAN PLANNING COMMISSION

Susan Osborne-Howes
 Susan Osborne-Howes, Chairman

Marvin S. Kraut
 Marvin S. Kraut, Secretary

This plat approved and all dedications shown thereon, only, accepted by the City Council of the City of Wichita, Kansas, this 22nd day of May, 1997.

Bob Knight
 Bob Knight, Mayor

Pat Burnett
 Pat Burnett, City Clerk

Entered on transfer record this _____ day of _____, 1997.

_____, County Clerk

STATE OF KANSAS)
) ss:
 SEDGWICK COUNTY)

This is to certify that this instrument was filed for record in the Register of Deeds office this _____ day of _____, 1997.

_____, Register of Deeds

_____, Deputy

