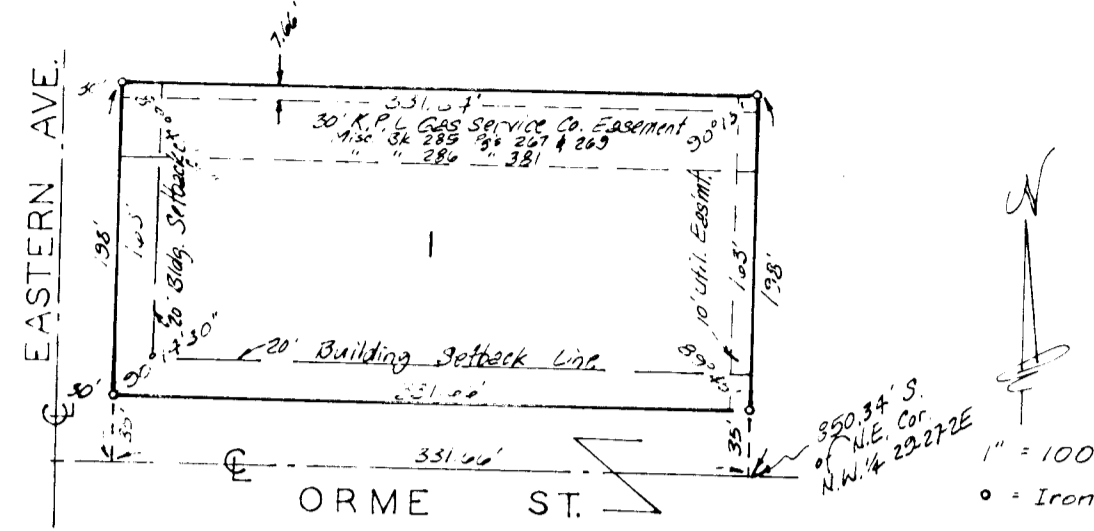


EXECUTIVES INC. ADDITION

WICHITA, KANSAS



State of Kansas } ss. We, Baughman Company, P.A. Surveyors
 Sedwick County } ss. in aforesaid county and state do hereby certify that
 we have surveyed and platted "EXECUTIVES INC. ADDITION"
 Wichita, Kansas and that the accompanying plat is a
 true and correct exhibit of the property surveyed de-
 scribed as the south 198 feet of the north 850.34 feet
 of the E. 1/4 of the NW 1/4 of Sec. 29, Twp. 27-S, R. 2-E
 of the 6th P.M., Sedwick County, Kansas.

7-18-1938
 Date
 Baughman Company P.A.
 Gregory F. Severns
 Surveyor

Know all men by these presents
 that we, the undersigned, have caused the land described
 in the surveyors certificate to be platted into a lot
 and street to be known as "EXECUTIVES INC. ADDI-
 TION," Wichita, Kansas. The utility easement is
 hereby granted as indicated for the construction
 and maintenance of all public utilities. The street
 is hereby dedicated to and for the use of the public.

Executives Inc., A Kansas Corporation
 C.W. Klein
 Title

State of Kansas } ss. The foregoing instrument was
 Sedwick County } ss. acknowledged before me this 18th day of July
 1938, by C.W. Klein, Vice President of
 Executives Inc., A Kansas Corporation, on behalf of
 the corporation.

Mark A. Savoy
 Notary Public
 My App. Exp. 12 May 1943

We, the undersigned, holders of
 a mortgage on the above described property do hereby
 consent to this plat of "EXECUTIVES INC. ADDITION,"
 Wichita, Kansas.

Fourth National Bank
 J.D. Neuman, Vice President

State of Kansas } ss. The foregoing instrument was
 Sedwick County } ss. acknowledged before me this 18th day of July
 1938 by Fourth National Bank on behalf of the bank.

My App. Exp. Conetta L. Madden, Notary Public

This plat of "EXECUTIVES INC.
 ADDITION" Wichita, Kansas, has been submitted to and
 approved by the Wichita-Sedwick County Metropolitan
 Area Planning Commission, Wichita, Kansas. Dated this
 18th day of July, 1938.

Wichita-Sedwick County Metropolitan Area Planning
 Commission
 David Bayouth, Vice Chairman
 Michael E. Lindbeck, Secretary

This plat approved and all dedica-
 tions shown hereon accepted by the Board of Com-
 missioners of the City of Wichita, Kansas, this
 18th day of July, 1938.

Tony Casado, Mayor
 Donald C. Bissell, City Clerk

Entered on transfer record this
 18th day of July, 1938.
 Don Wright, County Clerk

State of Kansas } ss. This is to certify that this plat
 Sedwick County } ss. has been filed for record in the office of the
 Register of Deeds this 18th day of July
 1938, at 10 o'clock P.M. and is duly recorded.

Pat Kehler, Register of Deeds
 Ed Reese, Deputy