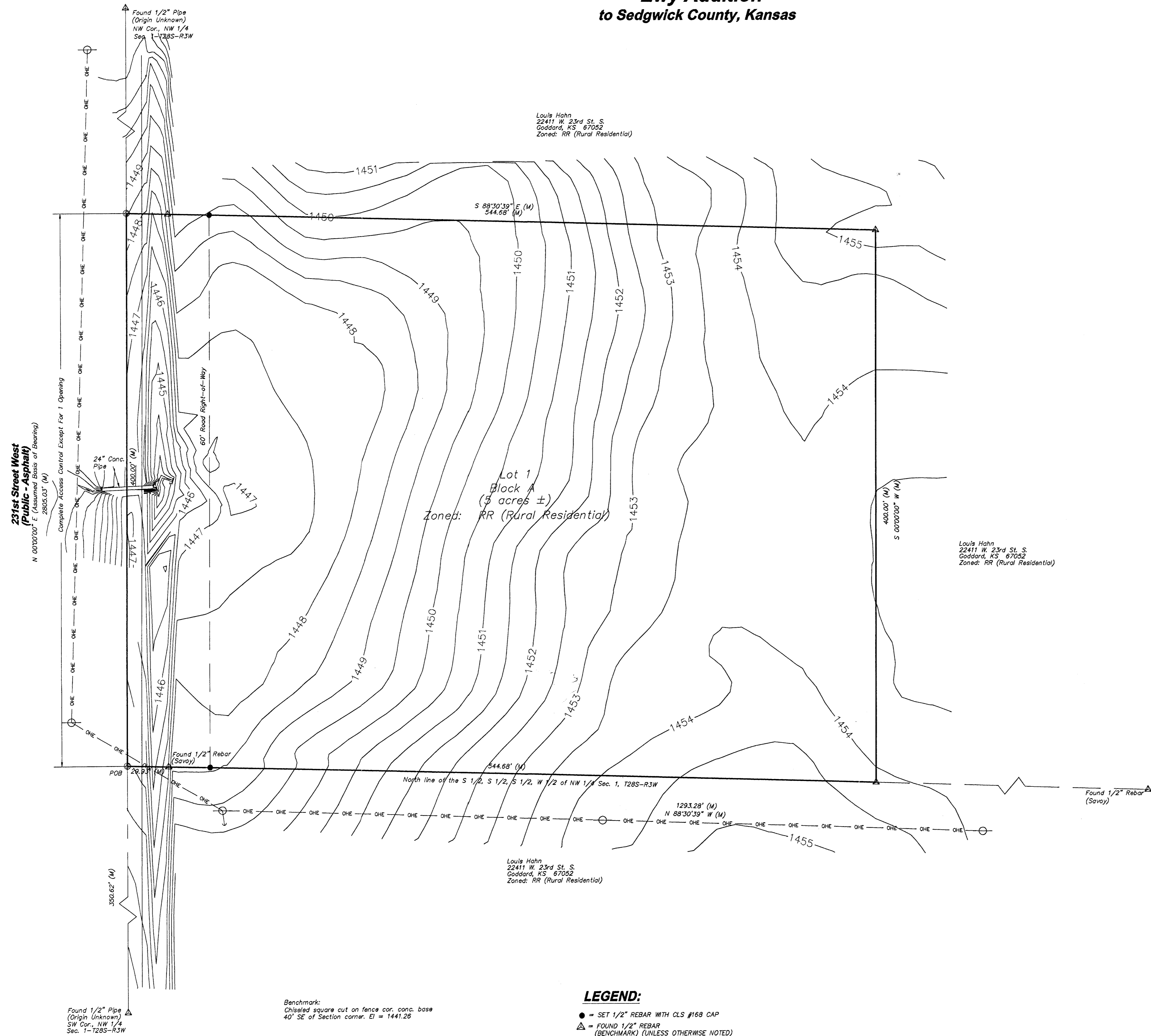


**One-Step Final Plat  
Ewy Addition  
to Sedgwick County, Kansas**



**LEGEND:**

- = SET 1/2" REBAR WITH CLS #168 CAP
- ▲ = FOUND 1/2" REBAR (BENCHMARK) (UNLESS OTHERWISE NOTED)
- (M) = MEASURED OR CALCULATED FROM MEASUREMENT
- (P) = PLATTED
- = POWER POLE
- = GUY WIRE
- O — = OVERHEAD ELECTRIC LINE

Benchmark:  
Chiseled square cut on fence cor. conc. base  
40' SE of Section corner. EI = 1441.26

Found 1/2" Pipe  
(Origin Unknown)  
NW Cor., NW 1/4  
Sec. 1-1285-R3W

CERTIFICATE OF SURVEY

State of Kansas }  
County of Sedgwick } SS

We, Benchmark Land Survey, P.A., Surveyors in aforesaid county and state do hereby certify that we have surveyed and plotted "Ewy Addition" to Sedgwick County, Kansas and that the accompanying plat is a true and correct exhibit of said survey described as follows:

A parcel in the Northwest Quarter of Section 1, Township 28 South, Range 3 West of the Sixth Principal Meridian, Sedgwick County, Kansas, described as follows: Beginning at the Northwest Corner of the South half of the South half of the West half of said Northwest Quarter; thence N00°00'00"E (Assumed) along the west line of said Northwest Quarter for 400.00 feet; thence S88°30'39"W parallel with the North line of said South half for a distance of 544.68 feet; thence S00°00'00"W for a distance of 400.00 feet to a point on said North line; thence N88°30'39"W along said line for 544.68 feet to the Point of Beginning. Said parcel contains 5.0 acres more or less. Subject to existing Road Right-of-Way.

I hereby certify that the details of this plat are correct to the best of my knowledge and belief this \_\_\_\_ day of \_\_\_\_\_, 2005.

Chad R. Abbott, L.S. #1340

OWNER'S CERTIFICATE

State of Kansas }  
County of Sedgwick } SS

Know all men by these presents that I the undersigned owner of the land as above set forth in the Surveyor's Certificate, have caused the same to be surveyed and platted into a lot and a block, the same to be known as "Ewy Addition" to Sedgwick County, Kansas. The 60' Street Right-of-Way along 231st Street is hereby dedicated to and for the use of the public. A drainage plan has been developed for the plot and all drainage easements, rights-of-way, or reserves shall remain at established grades or as modified with the approval of the applicable City or County Engineer, and will remain unobstructed to allow for the conveyance of stormwater.

David Ewy                      Paula Ewy

NOTARY CERTIFICATE

State of Kansas }  
County of Sedgwick } SS

Be it remembered that on this \_\_\_\_ day of \_\_\_\_\_, 2005, before me a notary public in and for said County and State, came David Ewy to me personally known to be the same person who executed the foregoing instrument of writing and duly acknowledged the execution of the same. I have hereunto set my hand and affixed my notarial seal the day and year above written.

Sworn before me this \_\_\_\_ day of \_\_\_\_\_, 2005.

\_\_\_\_\_, Notary Public  
My appointment expires: October 29, 2008.

NOTARY CERTIFICATE

State of Kansas }  
County of Sedgwick } SS

Be it remembered that on this \_\_\_\_ day of \_\_\_\_\_, 2005, before me a notary public in and for said County and State, came \_\_\_\_\_ to me personally known to be the same person who executed the foregoing instrument of writing and duly acknowledged the execution of the same. In testimony whereof, I have hereunto set my hand and affixed my notarial seal the day and year above written.

Sworn before me this \_\_\_\_ day of \_\_\_\_\_, 2005.

(Print Name) \_\_\_\_\_, Notary Public

My appointment expires: \_\_\_\_\_

PLANNING AGENCY CERTIFICATE

State of Kansas }  
County of Sedgwick } SS

This plat of "Ewy Addition" to Sedgwick County, Kansas, has been submitted to and approved by the Wichita-Sedgwick County Metropolitan Area Planning Commission, Wichita, Kansas.

Dated this \_\_\_\_ day of \_\_\_\_\_, 2005.

WICHITA-SEDGWICK COUNTY METROPOLITAN PLANNING COMMISSION

\_\_\_\_\_, Chairman  
Harold L. Warner, Jr.  
\_\_\_\_\_, Secretary  
John L. Schlegel

COUNTY SURVEYOR CERTIFICATE

Reviewed in accordance with K.S.A. 58-2005 on this \_\_\_\_ day of \_\_\_\_\_, 2005.

\_\_\_\_\_, #1248  
Deputy County Surveyor  
Sedgwick County, Kansas

COUNTY COMMISSIONER CERTIFICATE

State of Kansas }  
County of Sedgwick } SS

This plat approved and all dedications shown hereon, if any, accepted by the Board of County Commissioners of Sedgwick County, Kansas, this \_\_\_\_ day of \_\_\_\_\_, 2005.

\_\_\_\_\_, Chairman                      ATTEST: Don Brace, County Clerk

TRANSFER RECORD

Entered on transfer record this \_\_\_\_ day of \_\_\_\_\_, 2005.

\_\_\_\_\_, County Clerk

REGISTER OF DEEDS CERTIFICATE

State of Kansas }  
County of Sedgwick } SS

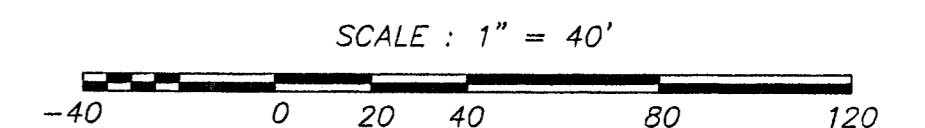
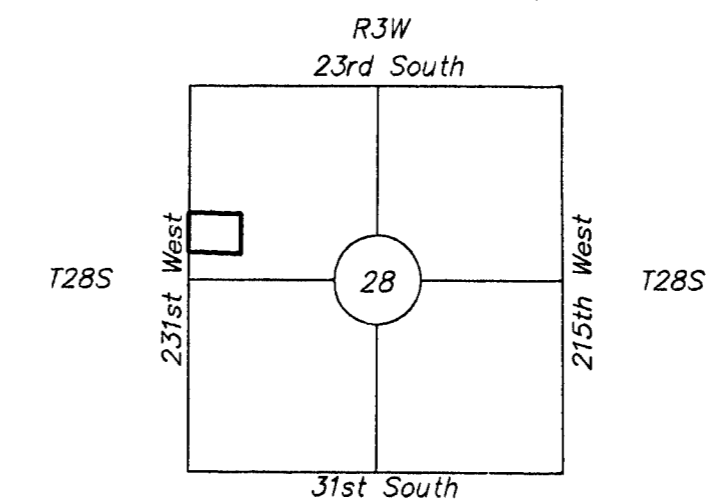
This is to certify that this instrument was filed for record in the Register of Deeds Office, at \_\_\_\_ a.m.-p.m., on the \_\_\_\_ day of \_\_\_\_\_, 2005.

\_\_\_\_\_, Register of Deeds

\_\_\_\_\_, Deputy

Entered on transfer record this \_\_\_\_ day of \_\_\_\_\_, 2005.

WIGNY MAP (NOT TO SCALE)



JOB DESCRIPTION: One-Step Final Plat	
PREPARED FOR: David Ewy	
JOB LOCATION: NW 1-28-3W	DATE OF PREPARATION: November 17, 2005
JOB NUMBER: 6237	SHEET 1 OF 1
DRAWN BY: L.A.A. CHECKED BY: C.A.L.	



617 E. WILLIAM WICHITA, KS 67202  
PH 316.262.2262 FAX 316.262.2268  
surveyors@benchmarkks.net