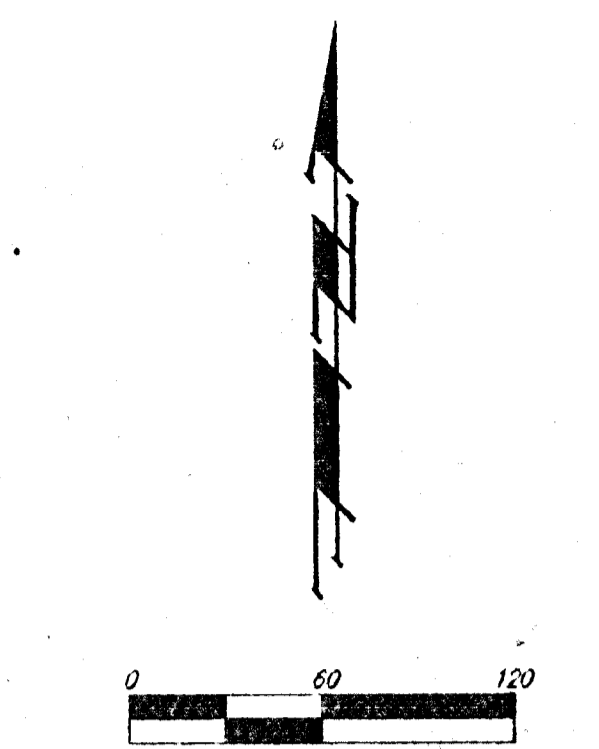
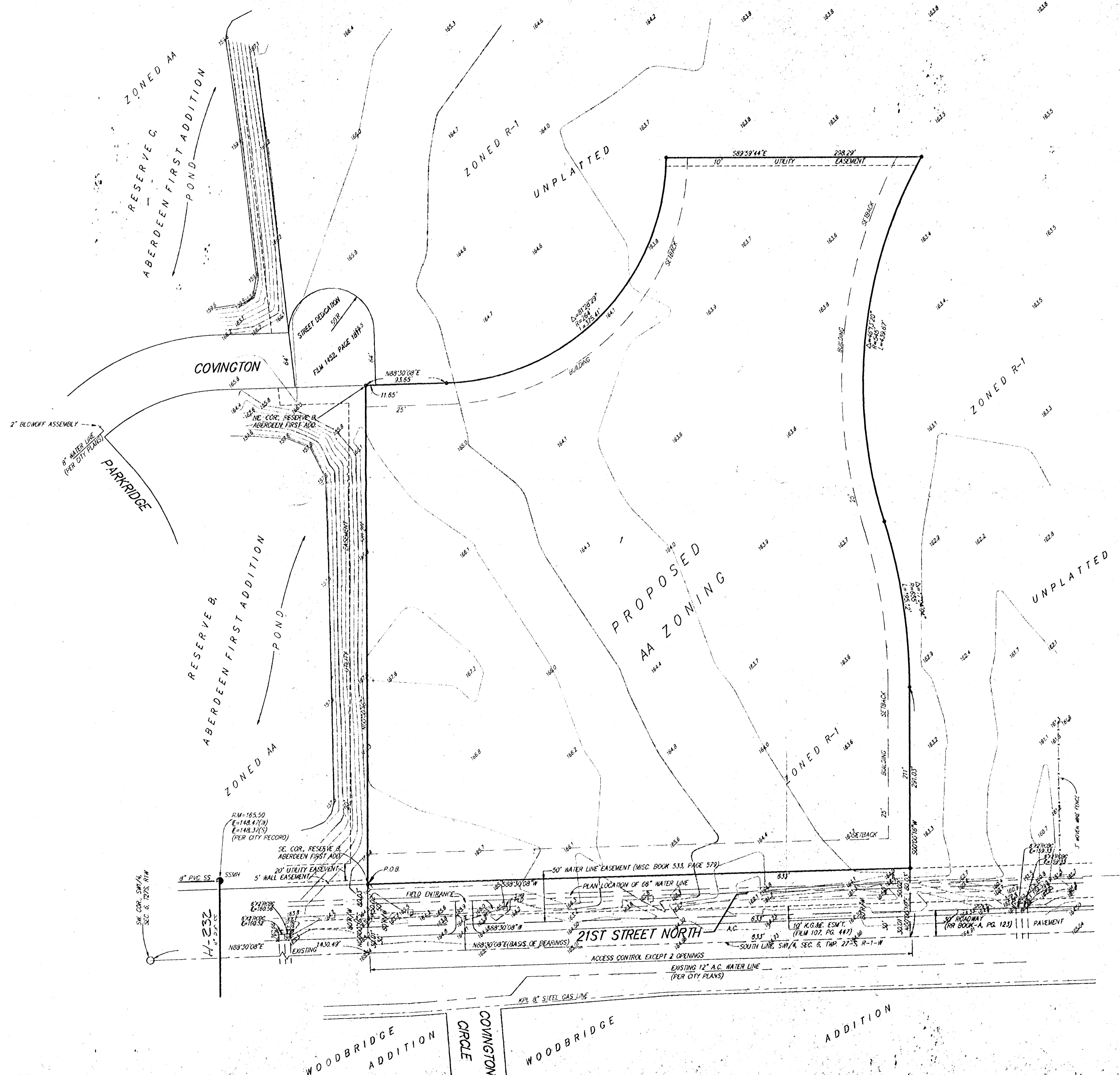


SKETCH PLAT

EVANGEL ASSEMBLY OF GOD ADDITION

WICHITA, SEDGWICK COUNTY, KANSAS



- = POWER POLE
- ↓ = GUY ANCHOR
- = SOUTHWESTERN BELL PEDESTAL
- = OVERHEAD ELECTRIC LINE
- - - = UNDERGROUND TELEPHONE LINE
- = WATER LINE
- - - = GAS LINE
- = #4 REBAR W/ 'BAUGHMAN' CAP (SET)
- = TRIMBLE (FOUND)

OWNER:
 EDWARD T. NEVILLE
 3825 MAPLE
 WICHITA, KANSAS 67209
 PH: 316-722-1730

LEGAL DESCRIPTION:
 BEGINNING AT THE SE. CORNER OF RESERVE B, ABERDEEN FIRST ADDITION, WICHITA, SEDGWICK COUNTY, KANSAS; THENCE N00°00'16"E ALONG THE EAST LINE OF SAID RESERVE B, 581.20 FEET TO THE NE. CORNER OF SAID RESERVE B; THENCE N88°30'08"E ALONG THE SOUTH LINE OF COVINGTON AS EXTENDED EAST, 93.65 FEET TO THE P.C. OF A CURVE TO THE LEFT; THENCE NORTHEASTERLY ALONG SAID CURVE, HAVING A CENTRAL ANGLE OF 88°00'22" AND A RADIUS OF 284 FEET, AN ARC DISTANCE OF 405.50 FEET, (HAVING A CHORD LENGTH OF 368.80 FEET BEARING N44°29'53"E); THENCE S89°59'44"E, 238.29 FEET TO THE P.C. OF A CURVE TO THE LEFT; THENCE SOUTHERLY ALONG SAID CURVE, HAVING A CENTRAL ANGLE OF 46°13'20" AND A RADIUS OF 545 FEET, AN ARC DISTANCE OF 439.67 FEET, (HAVING A CHORD LENGTH OF 427.84 FEET BEARING S06°02'52"W); TO THE P.I.C. OF A CURVE TO THE RIGHT; THENCE SOUTHERLY ALONG SAID CURVE, HAVING A CENTRAL ANGLE OF 170°4'04" AND A RADIUS OF 655 FEET, AN ARC DISTANCE OF 195.12 FEET, (HAVING A CHORD LENGTH OF 194.40 FEET BEARING S08°31'46"E); TO THE P.T. OF SAID CURVE; THENCE S00°00'16"W, 291.03 FEET TO A POINT ON THE SOUTH LINE OF SAID SW1/4; THENCE S89°30'08"W ALONG THE SOUTH LINE OF SAID SW1/4, 633 FEET TO A POINT OF INTERSECTION OF THE SOUTH LINE OF SAID SW1/4 WITH THE EAST LINE OF SAID RESERVE B AS EXTENDED SOUTH; THENCE N00°00'16"E ALONG SAID EXTENDED EAST LINE, 80.03 FEET TO THE POINT OF BEGINNING.

BENCHMARK:
 119TH W. & 21ST N. - CITY OF WICHITA DISC, SE. COR. OF INTERSECTION,
 67' S. & 46' E. OF @ BOTH, 79' S. OF E., 93.10' SE. OF SEC. COR. IRON.
 ELEV = 172.08 CITY DATUM

SHEFFORD & 21ST N. - CITY OF WICHITA DISC, SE. COR. OF INTERSECTION,
 52.6' S. & 35' E. OF @ BOTH, 17.5' E. OF BACK OF CURB EXTENDED.
 ELEV = 185.16 CITY DATUM

