

# EVANGEL ASSEMBLY OF GOD ADDITION

## WICHITA, SEDGWICK COUNTY, KANSAS

State of Kansas )  
 County of Sedgwick )  
 We, Baughman Company P.A., Surveyors in aforesaid county and state do hereby certify that, under the supervision of the undersigned, we have surveyed and platted "EVANGEL ASSEMBLY OF GOD ADDITION", Wichita, Sedgwick County, Kansas and that the accompanying plat is a true and correct exhibit of the property surveyed described as follows: Beginning at the SE. Corner of Reserve B, Aberdeen First Addition, Wichita, Sedgwick County, Kansas; thence N00°00'16"E along the east line of said Reserve B, 581.20 feet to the NE. Corner of said Reserve B; thence N88°30'08"E along the south line of Covington as extended east, 93.65 feet to the P.C. of a curve to the left; thence northeasterly along said curve, having a central angle of 88°00'22" and a radius of 264 feet, an arc distance of 405.50 feet, (having a chord length of 366.80 feet bearing N44°29'57"E); thence S89°59'44"E, 298.29 feet to the P.C. of a curve to the left; thence southerly along said curve, having a central angle of 46°13'20" and a radius of 545 feet, an arc distance of 439.67 feet, (having a chord length of 427.84 feet bearing S06°02'52"W), to the P.R.C. of a curve to the right; thence southerly along said curve, having a central angle of 170°4'04" and a radius of 655 feet, an arc distance of 195.12 feet, (having a chord length of 194.40 feet bearing S08°31'46"E), to the P.T. of said curve; thence S00°00'16"W, 291.03 feet to a point on the south line of said SW1/4; thence S88°30'08"W along the south line of said SW1/4, 633 feet to a point of intersection of the south line of said SW1/4 with the east line of said Reserve B as extended south; thence N00°00'16"E along said extended east line, 80.03 feet to the point of beginning.

All being situated in the SW1/4 of Sec. 6, Twp. 27-S, R-1-W of the 6th P.M., Sedgwick County, Kansas.  
 Existing public easements and dedications being vacated by virtue of K.S.A. 12-512(b).  
 Baughman Company, P.A.

Michael A. Conroy Surveyor  
 Michael C. Conroy  
 Know all men by these presents that we, the undersigned have caused the land described in the Surveyors Certificate to be platted into a Lot and a Street to be known as "EVANGEL ASSEMBLY OF GOD ADDITION", Wichita, Sedgwick County, Kansas. The utility easements are hereby granted as indicated for the construction and maintenance of all public utilities. The street is hereby dedicated to and for the use of the public. All abutters rights of access to or from 21st Street North over and across the south line of Lot 1 are hereby granted to the City of Wichita, Kansas provided, however, that Lot 1 shall have access to 21st Street North at two locations as shall be determined by the City Engineer of the City of Wichita, Kansas. The Minimum Building Pad Elevation for the lowest opening to the structures on Lot 1 shall be 166.5 City Datum (1353.9 M.S.L.).  
 Evangel Assembly of God, Wichita, Kansas

Vance A. Cauthon, Pastor  
 Vance A. Cauthon  
Josephine Satterlund, Secretary  
 Josephine Satterlund  
Nicholas L. Easter, Trustee  
 Nicholas L. Easter

State of Kansas )  
 Sedgwick County )  
 SS The foregoing instrument acknowledged before me, this 31st day of June, 1996, by Vance A. Cauthon, Pastor, and Josephine Satterlund, Secretary, and Nicholas L. Easter, Trustee, all of Evangel Assembly of God, Wichita, Kansas, on behalf of Evangel Assembly of God, Wichita, Kansas.

MARY L. RAY Notary Public  
 My App't. Exp. 3/19/98

This plat of "EVANGEL ASSEMBLY OF GOD ADDITION", Wichita, Sedgwick County, Kansas, has been submitted to and approved by the Wichita-Sedgwick County Metropolitan Area Planning Commission, Wichita, Kansas.  
 Dated this 11th day of March, 1996.  
 Wichita-Sedgwick County Metropolitan Area Planning Commission.

Susan Osborne-Howes Chair  
 Susan Osborne-Howes  
Marvin S. Krout Secretary  
 Marvin S. Krout

This plat approved and all dedications shown hereon accepted by the City Council of the City of Wichita, Kansas, this 11th day of JUNE, 1996.

Bob Knight Mayor  
 Bob Knight  
Pat Burnett City Clerk  
 Pat Burnett

Entered on transfer record this \_\_\_\_\_ day of \_\_\_\_\_, 1996.  
 \_\_\_\_\_ County Clerk  
 Susan E. Crockett-Spoon

State of Kansas )  
 Sedgwick County )  
 SS This is to certify that this plat has been filed for record in the office of the Register of Deeds, this \_\_\_\_\_ day of \_\_\_\_\_, 1996, at \_\_\_\_\_ o'clock \_\_\_\_\_ M., and is duly recorded.

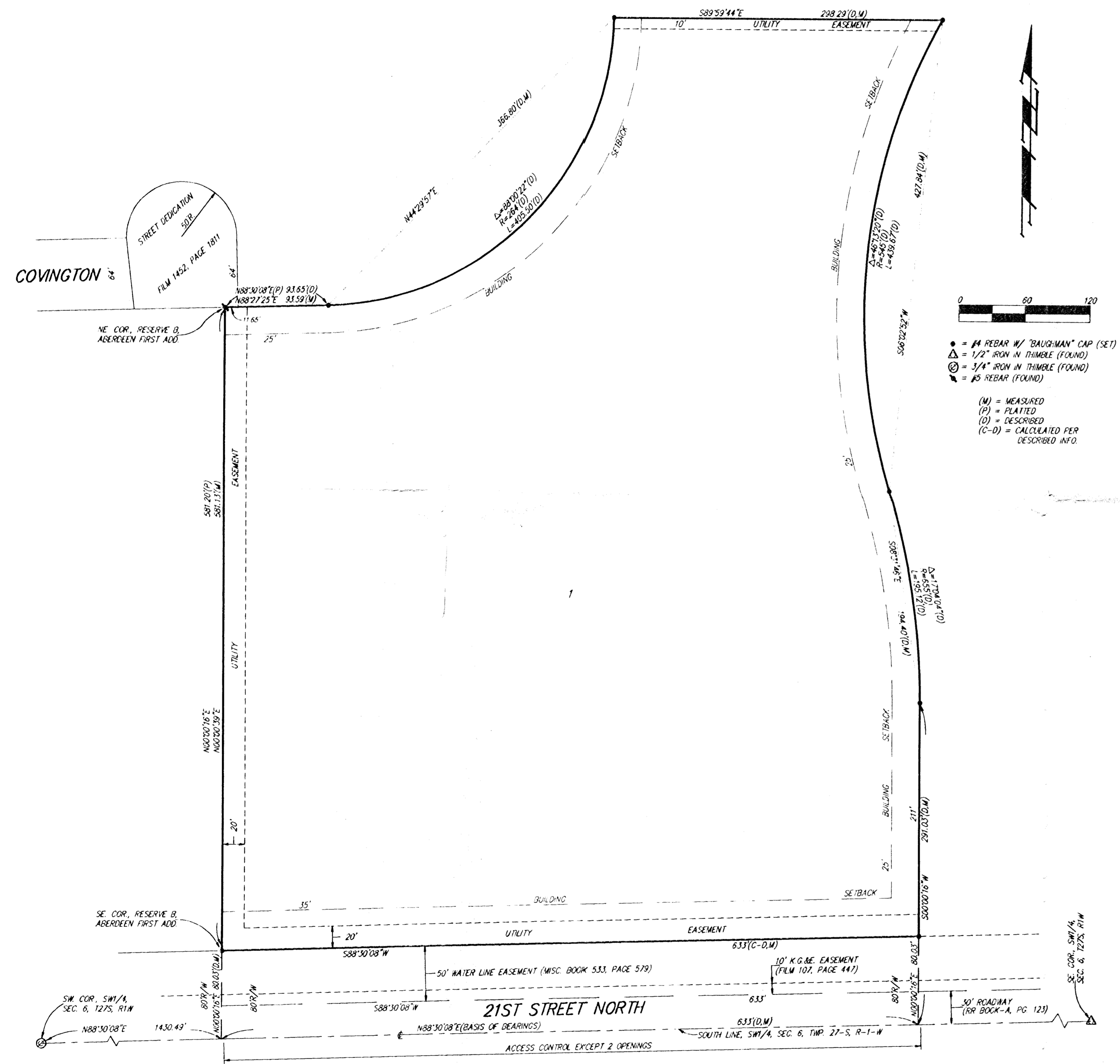
\_\_\_\_\_ Register of Deeds  
 Pat Kettler  
 \_\_\_\_\_ Deputy  
 Ed Resa

We, the undersigned, holders of a mortgage on the above described property, do hereby consent to this plat of "EVANGEL ASSEMBLY OF GOD ADDITION", Wichita, Sedgwick County, Kansas.  
 Assemblies of God Ministers Benefit Association, a Missouri Religious Corporation

Ethel M. Campbell  
 Ethel M. Campbell, Exec. Dir.

State of Missouri )  
 Greene County )  
 SS The foregoing instrument acknowledged before me, this 23rd day of April, 1996, by Ethel M. Campbell, executive director, of Assemblies of God Ministers Benefit Association, a Missouri Religious Corporation, on behalf of the corporation.

Jack E. Shank Notary Public  
 My App't. Exp. July 13, 1997



BENCHMARK:  
 119TH W. & 21ST N. - CITY OF WICHITA DISC, SE. COR. OF INTERSECTION,  
 67' S. & 46' E. OF Q. BOTH. 79' S. OF S. 93.10' SE. OF SEC. COR. IRON.  
 ELEV = 172.08 CITY DATUM  
 SHEFFORD & 21ST N. - CITY OF WICHITA DISC, SE. COR. OF INTERSECTION,  
 52.6' S. & 35' E. OF Q. BOTH. 17.5' E. OF BACK OF CURB EXTENDED.  
 ELEV = 165.16 CITY DATUM