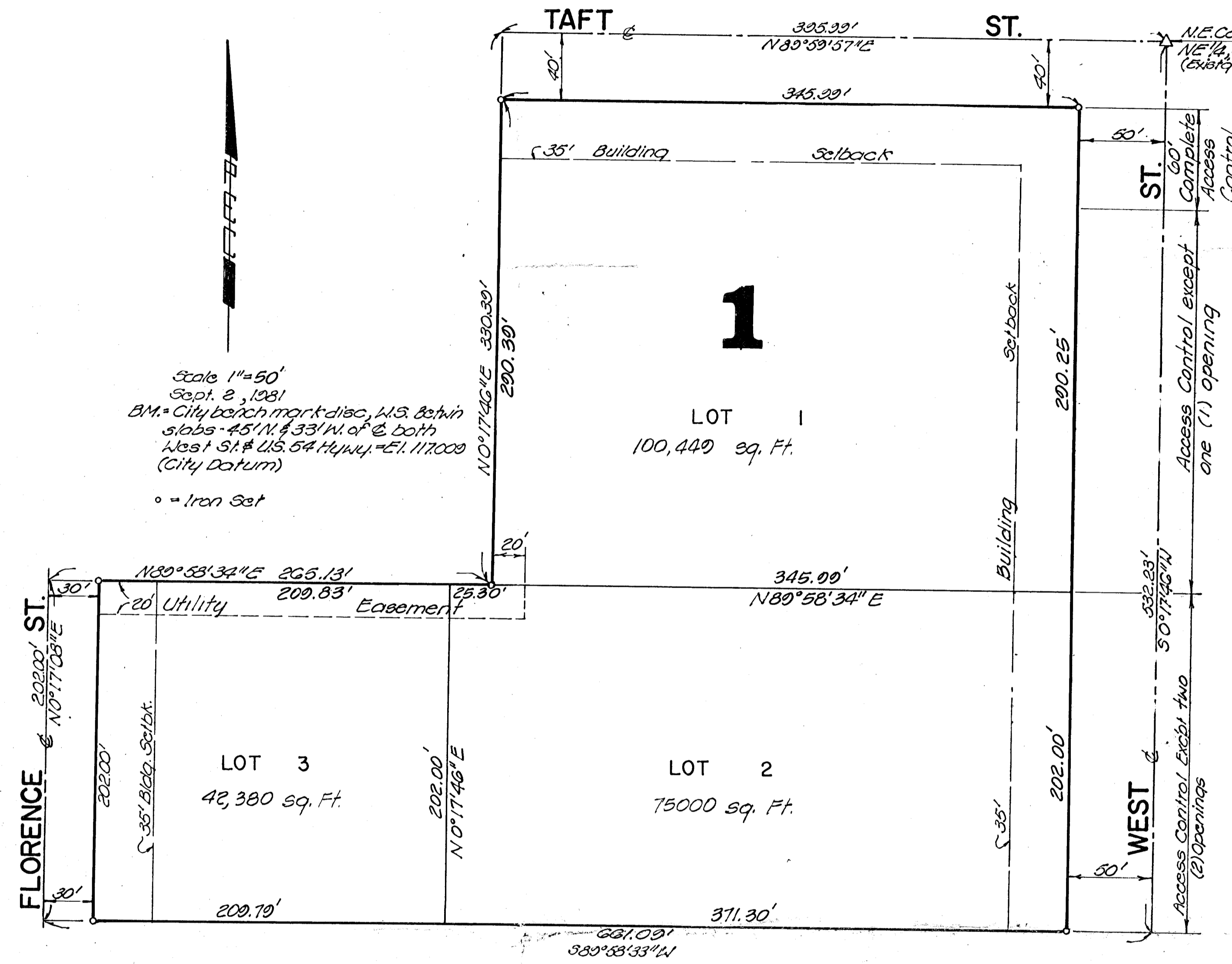


EUREKA ADDITION

TO WICHITA, SEDGWICK COUNTY, KANSAS



Scale 1"=50'
 Sept. 2, 1981
 B.M. = City bench mark disc, U.S. 2nd
 stabs - 45' N. & 33' W. of E. both
 West St. # U.S. 54 Hwy. = E. 117000
 (City Datum)
 o = Iron Set

State of Kansas SS
 County of Sedgwick

I, R.W. Linn, a Professional Engineer in aforesaid State and County, do hereby certify that on this day of _____, 1981, I have caused to be surveyed and plotted "EUREKA ADDITION" to Wichita, Sedgwick County, Kansas into lots, a Block and Streets, the same being described as: Beginning at the NE Cor. of the NE 1/4, SE 1/4, NE 1/4 of Section 26, T27S, R1W, 21 E. of the 6th PM.; thence bearing S0°17'46" W along the E.L. of said NE 1/4, SE 1/4, NE 1/4, a distance of 532.23 ft.; thence bearing S20°53'33" W a distance of 661.03 ft. to the W.L. of said NE 1/4, SE 1/4, NE 1/4; thence bearing N0°17'03" E along said W.L. a distance of 202.00 ft.; thence bearing N89°53'34" E along the S.L. of the N 1/2 of said NE 1/4, SE 1/4, NE 1/4 a distance of 265.13 ft. to the SE Cor. of said Addition; thence bearing N0°17'46" E along the E.L. of said Addition a distance of 330.39 ft. to the N.L. of said NE 1/4, SE 1/4, NE 1/4; thence bearing N80°59'51" E along said N.L. a distance of 335.39 ft. to the point of beginning.



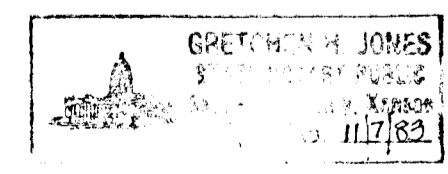
R.W. Linn
 R.W. Linn, P.E.
 #3684

Know all men by these presents that we, the undersigned property owners of the land as above set forth in the Engineer's Certificate, have caused the land to be surveyed and plotted into lots, a Block and Streets, the same to be known as "EUREKA ADDITION" to Wichita, Sedgwick County, Kansas. Easement, as indicated for the construction and maintenance of public utilities are hereby granted. The Streets are hereby dedicated to and for the use of the public. All abutters' rights of access to and from West Street, over and across the E.L. of Lots 1 & 2 as shown, are hereby granted to the City of Wichita provided, however that lot 1, shall have access to West Street at one (1) location & lot 2 at two (2) locations; said locations to be designated by the City Engineer of Wichita, Kansas.

Slowson Investment Corporation
John F. Rossillon
 John F. Rossillon, President

State of Kansas SS
 County of Sedgwick

Be it remembered that on this 7th day of October, 1981, before me, a notary public in aforesaid State and County, came Slowson Investment Corporation, by John F. Rossillon, Pres., to me personally known to be the same person who executed the foregoing instrument of writing and duly acknowledge the same for and on behalf and as the voluntary act and deed of said Corporation, in testimony whereof I have hereunto set my hand and affixed my notarial seal the day and year above written.



Gretchen H. Jones
 Notary Public

My Commission expires November 7, 1983

This plat has been submitted to and approved by the Wichita-Sedgwick County Metropolitan Area Planning Commission, Wichita, Kansas, on this 8th day of October, 1981.

James L. Gardner, II
 Chairman
Robert A. Lakin
 Secretary
 Robert A. Lakin

This plat approved and all dedications shown hereon are accepted by the City Commission of the City of Wichita, Kansas, on this 26th day of October, 1981.

R.C. Brown
 Mayor
Donald C. Giesick
 City Clerk
 Donald C. Giesick

This plat approved and all dedications shown hereon are accepted by the Board of County Commissioners of Sedgwick County, Kansas on this _____ day of _____, 1981.

Donald E. Grogg
 Chairman
Jack Spratt
 Commissioner
Tom Scott
 Commissioner

Attest:
Dorothy K. White
 County Clerk

Entered on Transfer Record this _____ day of _____, 1981.

Dorothy K. White
 County Clerk

This is to certify that this instrument was filed for record in the Register of Deeds Office at _____: _____: AM, on this _____ day of _____, 1981.

Bette F. McCort
 Register of Deeds
Pat Kettler
 Deputy