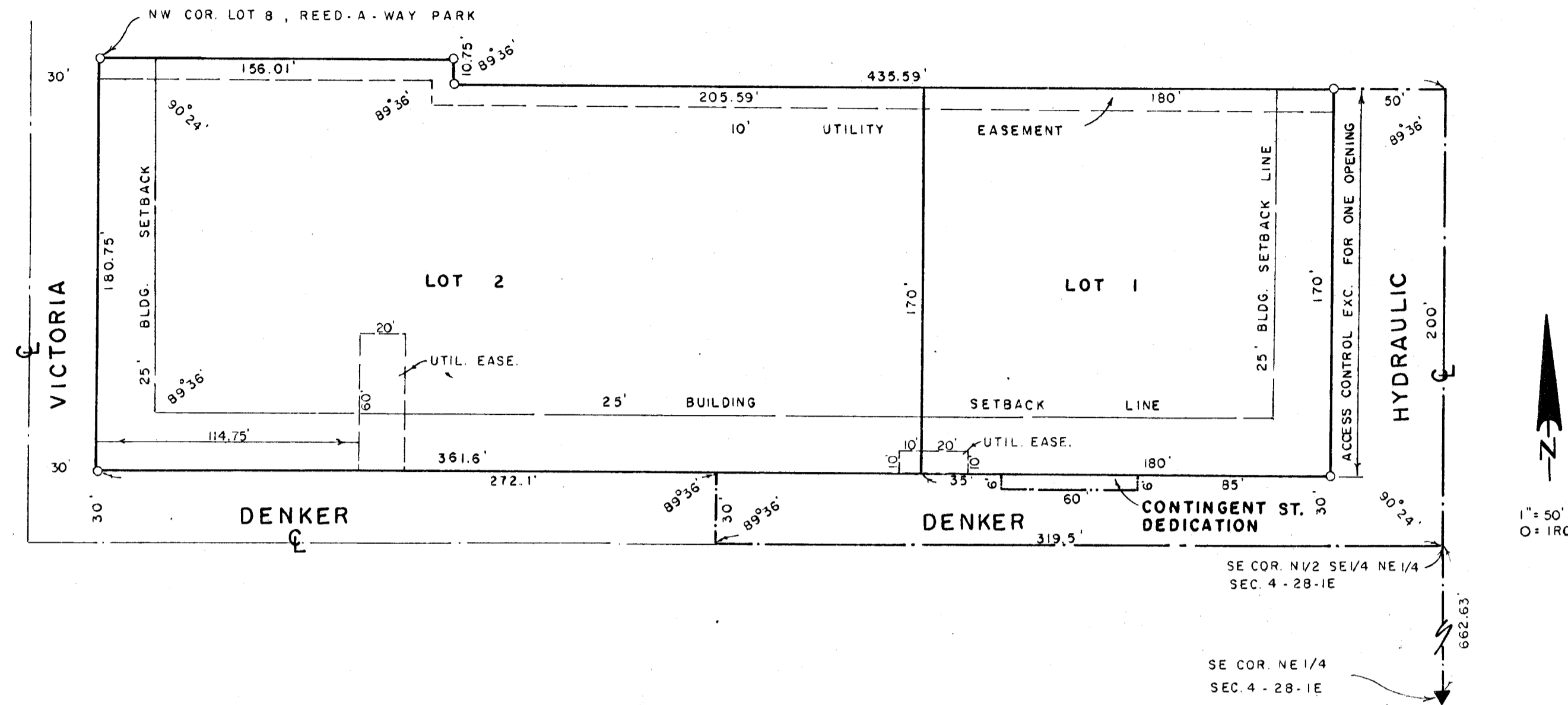


# ESTE GATE SECOND ADDITION

WICHITA, SEDGWICK COUNTY, KANSAS



State of Kansas, County of Sedgwick, SS

I, Lowell D. High, Land Surveyor in the State of Kansas do hereby certify that I have surveyed and platted "Este Gate Second Addition," Wichita, Sedgwick County, Kansas and that the accompanying plat is a true and correct exhibit of said survey described as follows: Lots 8, 9, and 10, Reed-A-Way Park, an Addition to Wichita, Kansas, Sedgwick County, Kansas.

AND

Lot 1, Este Gate Addition to Wichita, Kansas, Sedgwick County, Kansas, together with Greenwood Avenue lying adjacent to said Lot 1.

AND

A tract beginning at the Southeast corner of the North Half of the Southeast Quarter of the Northeast Quarter of Section 4, Township 28 South, Range 1 East of the Sixth Principal Meridian, Sedgwick County, Kansas; thence north 200 feet; thence west 319.51 feet; thence south 200 feet; thence east 319.51 feet to the place of beginning.

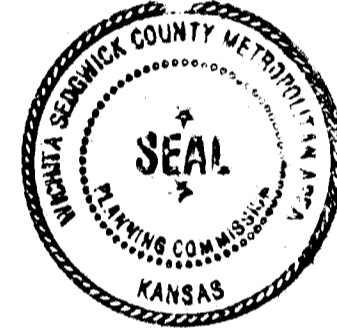
*Lowell D. High*  
Lowell D. High, L.S.  
4-11-90



This plat of "Este Gate Second Addition", Wichita, Sedgwick County, Kansas has been submitted to and approved by the Wichita-Sedgwick County Metropolitan Area Planning Commission, Wichita, Kansas.

Dated this 15th day of February, 1990, Wichita-Sedgwick County Metropolitan Area Planning Commission

*Wayne L. Brinberg*, Chairman  
Wayne L. Brinberg  
*Marvin S. Kout*, Secretary  
Marvin S. Kout



This plat approved and all dedications shown hereon, if any, accepted by the Board of City of Commissioners of the City of Wichita, Kansas this 8th day of MAY, 1990.



*U.L. Koch*, U.L. Koch, Mayor  
Bob Knight, Mayor  
*John Moir*, Deputy City Clerk  
John Moir, DEAK

Entered on transfer of record this \_\_\_\_\_ day of \_\_\_\_\_, 1990.

Don Wright, County Clerk

State of Kansas, County of Sedgwick, SS.

This is to certify that this instrument was filed for record in the Register of Deeds Office, at \_\_\_\_\_ o'clock, \_\_\_\_\_ m., on the \_\_\_\_\_ day of \_\_\_\_\_, 1990.

Pat Kettler, Register of Deeds

Ed Reso, Deputy

Know all men by these presents that we, Indian Southern Baptist Church, by Peter Begay, Trustee, Dorothy F. England, Trustee, and Elizabeth Bruner, Trustee, have caused the land described in the Land Surveyor's Certificate to be platted into lots and streets to be known as "Este Gate Second Addition," Wichita, Sedgwick County, Kansas.

The streets are hereby dedicated to and for the use of the public.

The utility easements as indicated on the plat are hereby granted for construction and maintenance of all public utilities.

That portion of Denker Street labeled on the face of the plat as Contingent Street Dedication is hereby dedicated to the public for street right-of-way contingent on removal or substantial destruction of existing building. This Contingent Street Dedication shall be a covenant running with the land and shall be binding on all heirs and subsequent owners of all parts of said property covered by said dedication.

All Abutter's Rights of access to or from Hydraulic Avenue over and across the east line of Lot 1 are granted to the City of Wichita, provided, however, that Lot 1 shall have access to Hydraulic Avenue at one location to be designated by the City Engineer.

All lots, blocks, streets, avenues, alleys, and easements not previously vacated within the boundaries of the above described property being vacated and replatted by virtue of K.S.A. 12-512 (b) amended.

*Peter T. Begay*, Peter Begay, Trustee  
*Dorothy F. England*, Dorothy F. England  
*Elizabeth Bruner*, Elizabeth Bruner, Trustee

State of Kansas, County of Sedgwick, SS

The foregoing instrument was acknowledged before me this 11th day of April, 1990 by Peter Begay, Trustee, Dorothy F. England, Trustee, and Elizabeth Bruner, Trustee, of Indian Southern Baptist Church.

*Jim E. Bishop*, Notary Public  
Jim E. Bishop

My Commission Expires: April 10, 1993

