

## GENERAL NOTES:

- The Contractor shall verify all applicable utility depths. All specifications shall be completed following current City Standard Specifications and special Provisions.
- Contractor will be required to provide notice to utility companies a minimum of seventy-two (72) hours prior to any excavation, as follows:
  - Kansas One-Call 687-2470
  - The Contractor must notify the following in cases of an emergency:
    - 1-800-256-6664
    - AT&T Hills, Energy
    - 1-316-218-8821
    - City of Wichita Water & Sewer
    - 1-316-256-4000
    - City of Wichita Stormwater
    - 1-888-248-3330
    - Cox Communications
    - 1-800-544-4557
    - Weldco Gas Service
- Utility companies shall be notified by the Contractor on the plans specifically call for their adjustment or on the plans specifically identify a utility to be removed or on the plans, represent the best information obtainable for design. The Contractor will be required to work around existing utilities within the right-of-way which do not conflict with proposed construction.
- Rubble from the removal of miscellaneous structures and excess materials shall be disposed of in accordance with the specifications provided by the Contractor. These sites shall be approved by the Engineer as to stability, appearance and site location. Locations, in the opinion of the Engineer, shall be approved by the City of Wichita, Kansas Department of Health and Environment. Material either stockpiled or disposed of in a flood plain or in waters of the United States or wetlands is subject to U.S. Corps of Engineers permitting regulations. Any means buried or archaeological investigations unless buried in a previously approved borrow location.
- Trees and shrubs in public right-of-way which are in direct conflict with proposed new construction shall be removed by the Contractor with the exception of trees and shrubs which are in direct conflict with proposed new construction and which are to be saved and protected from damage.
- The Contractor shall give all property owners and/or tenants of developed property abutting the construction of the project a minimum of ten (10) days notice prior to start of construction.
- The Contractor shall be responsible for preserving property veins. The Contractor shall be responsible for the protection of all existing structures damaged or destroyed by the construction operations. Such items shall be re-established by a licensed land surveyor in accordance with state laws.
- The Engineering Division shall field locate water valves one time during construction when requested by the Contractor. It shall be the Contractor's responsibility to provide the necessary information for the field location process. Water valves, valve boxes or fire hydrants damaged during construction shall be repaired by Contractor at his own expense. Valve locations on the project plans shall be adjusted to match field grades by the contractor.
- The Contractor shall notify the consultant engineer and Dawanda Reinhardt at 316-600-0740 with the City of Wichita with the anticipated construction start date and notify them of project completion.
- If traffic will be impacted by construction, a traffic control plan must be submitted to the City of Wichita for review and approval prior to the start of construction. The Contractor shall be responsible for all traffic control measures to facilitate construction. All construction zone markings and signage shall be installed in accordance with the Manual of Uniform Traffic Control Devices (MUTCD) as published by the US Dept. of Transportation, Federal Highway Administration. All costs associated with construction markings and signage shall be the Contractor's responsibility.
- All elevations shown are NAVD 88.
- All areas disturbed during construction that will not be under proposed pavement shall be restored to match existing conditions.
- City Maintenance of sanitary sewer mains ends at least structure within the easement or right-of-way.
- All acids and dipped pipe shall be located with green plastic tape in the trench. The Contractor shall install the extent of trench open overnight and weekends to less than 50 feet.
- Connecting to Existing Manholes:
  - Prior to laying sewer lines using existing manholes in existing manholes, the Contractor shall verify the location, depth, and condition of existing manholes and notify the Engineer of any deviation from the plans. Where the slab is unusable due to elevation, grade or alignment, the Contractor shall be responsible for providing a suitable alternative. The existing manhole invert to provide smooth flow. Where connecting to an existing manhole that does not have an existing slab, the Contractor shall be responsible for providing a suitable alternative. The Contractor shall be responsible for providing a suitable alternative. The Contractor shall be responsible for providing a suitable alternative. The Contractor shall be responsible for providing a suitable alternative.

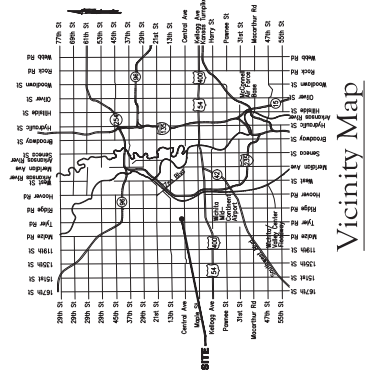
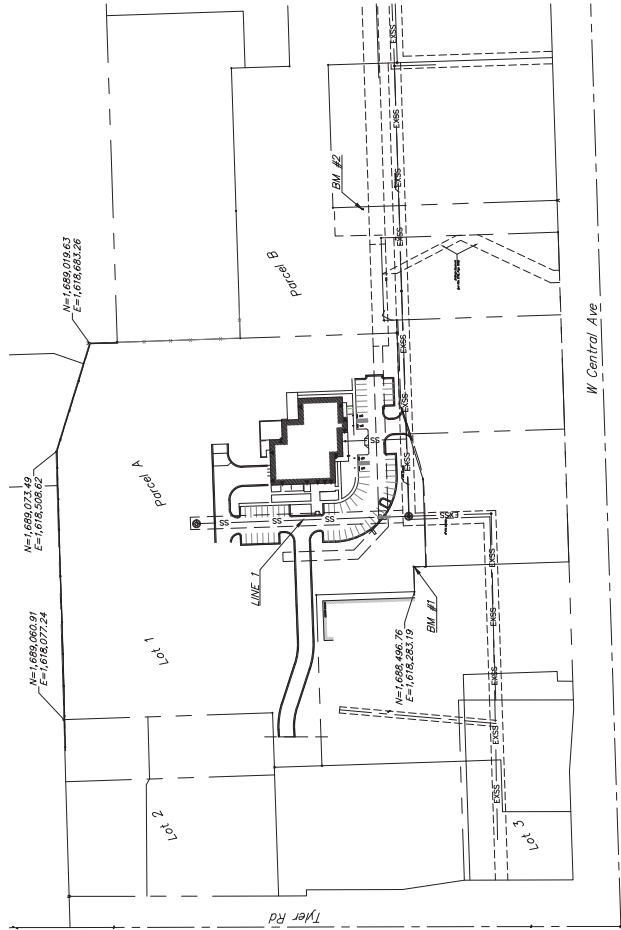
## Benchmarks

Site Benchmark - 1  
 NW corner of site  
 Elevation = 1330.85 (NAVD 88)

Site Benchmark - 2  
 SW corner of site  
 Elevation = 1331.14 (NAVD 88)

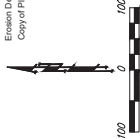
SANITARY SEWER  
 to SERVE  
**Tyler Acres 5th Addition**  
 Parcel A of Lot 1  
 Wichita, KS  
 Paul Gunzelman, P.E., City Engineer  
 2025-004896PPS  
 (53030982)

4948 C  
 CIS-07



## Sheet Index

- 1 Title Sheet
- 2 Erosion Control Plan
- 3 Manhole Detail
- 4 Manhole Detail
- 5 Erosion Details
- 6-10 Erosion Details
- 11 Copy of Plat



APPROVED AS NOTED  
 BY WICHITA PUBLIC WORKS  
 ENGINEERING DIVISION

Engineering approved by: *Shawn Helles* on 04/07/2025

Utilities approved by: *Scott Macey* on 04/07/2025

NOTE TO CONTRACTORS  
 Inspection and testing for this project is to be provided by a Licensed Consulting Engineering Firm. The Contractor shall be in accordance with the City of Wichita standard construction engineering practices and standards. The Contractor shall be responsible for obtaining all necessary permits and approvals. The Contractor shall be responsible for obtaining all necessary permits and approvals. The Contractor shall be responsible for obtaining all necessary permits and approvals.

An approved copy of these plans signed by City staff are required on-site.

**AS BUILTS**

Contractor:  
 Apex

Project Inspector:  
 Larry Gann

**KE MILLER**  
 ENGINEERING PA

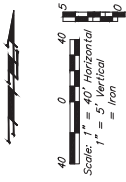
7/11/2025

117 E. Lewis, Wichita, KS 67202 (316)264-0242



Apr. 7, 2025

**BAUGHMAN COMPANY**  
 315 EIE St. Wichita, KS 67211 316-262-1271  
 BaughmanCO.com



**AS BUILTS**



**KEMILLER**  
ENGINEERING PA  
117 E. Lewis  
Wichita, KS 67202  
(316)264-0242



**BAUGHMAN**  
**COMPANY**  
315 Ellis St.  
Wichita, KS 67211  
316-262-7271  
Baughmanco.com

Tyler Acres 5th Addition

**Line 1**

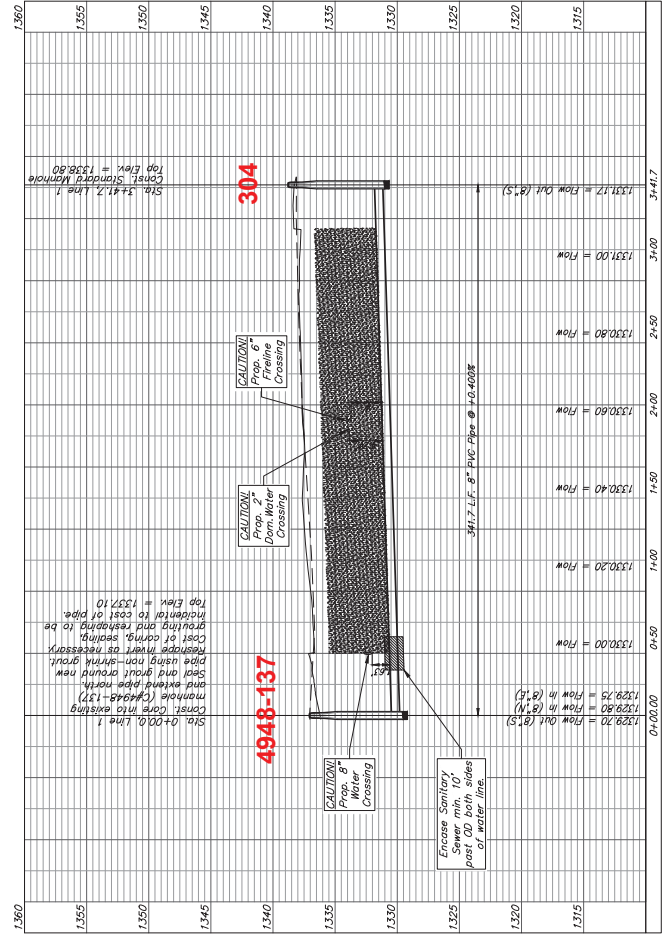
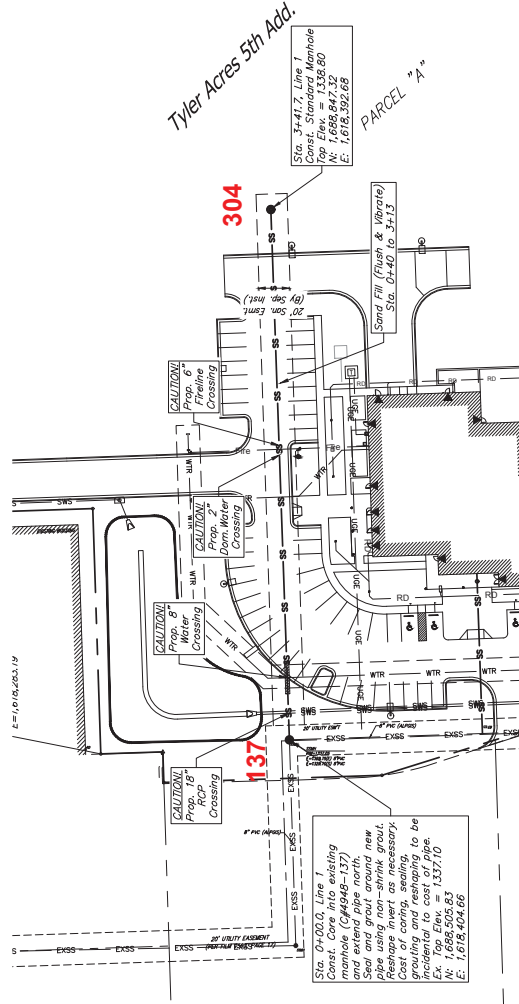
Sanitary Sewer  
Improvements

PROJECT NUMBER  
22-07-E249

DRAWN: PSB, DRAWN: PDM

DATE: Jan. 23, 2025

SHEET  
**2** OF  
**11**



**BENCHMARKS:**  
Site Benchmark 1  
Checked on top of sidewalk, SW corner of site  
Elevation = 1338.85 (NAD 83)  
Site Benchmark 2  
Checked on top of curb, 120' east of SE  
Elevation = 1336.14 (NAD 83)

