



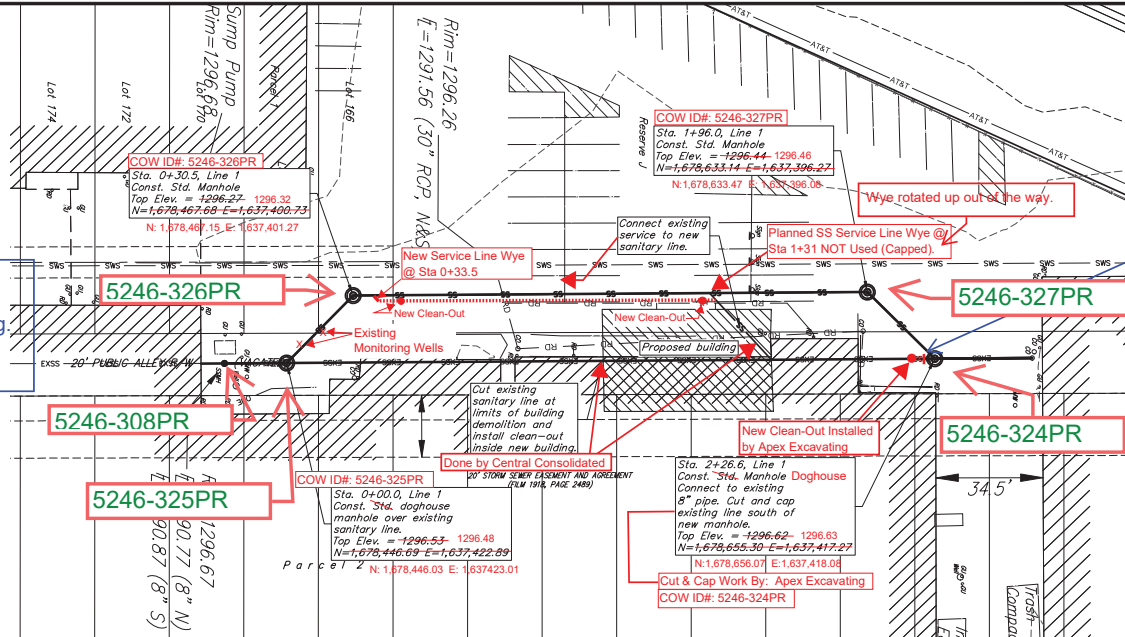
**BENCHMARKS:**

BM #1: " " chiseled on top of curb  
Elevation = 1295.30 (NAVD 88)

BM #2: " " with cross chiseled on top of catch basin  
Elevation = 1294.61 (NAVD 88)

Per Jeff Priddle on 7/18/25 - Apex installed service line from 0+33.5 to 1+31 then Central Consolidated connected from 1+31 to building

Note added by Dawnita Reinhardt - C.O.W.



Per phone conversation with Larry Powell, Baughman 7/21/25:

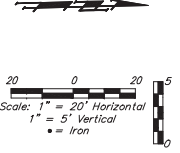
Existing line capped, then a clean-out placed south of cap on existing line. Existing line N of new building remains as a service line now, connected as shown to line shown under NW corner of the new building.

Was told N/S line under footprint of new building is gone.

Was told old SS line south of south limits of new building is still there. Unsure if that line enters manhole at 0+00.

I will check.

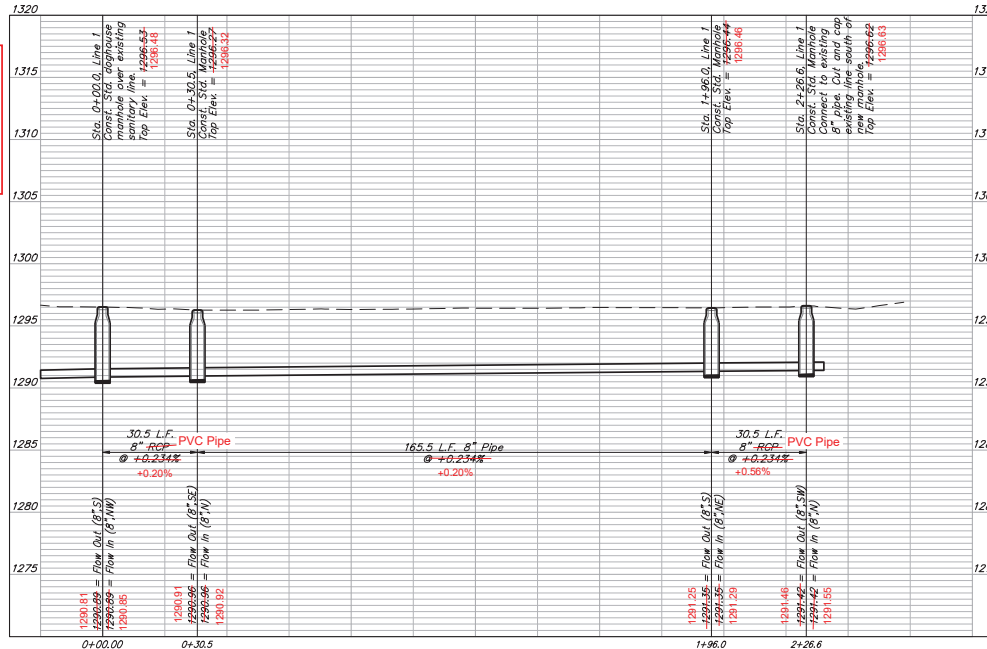
Note added by Dawnita Reinhardt, C.O.W. 7/21/25



Contractor to verify depth and location of existing utilities. Contractor to relocate any existing utilities as necessary for construction.

Contact utility companies 3 weeks prior to construction to coordinate temporary removal/replacement.  
Heide Bryan, Evergy, (316) 261-6354  
Shannon Brinkmeyer, AT&T (316) 268-2931  
Travis Taylor, Cox Comm., Travis.taylor@cox.com

Northings (N) and Eastings (E): State Plane Coordinates - Kansas Grid South - NAD83 (2011), EPOCH 2023.  
Elevations: NAVD88  
GPS As-Built Survey Shots By: Baughman Co.



**NOTES:**

- 1) Building Sanitary Sewer Service Line Work = Not Part of PPS.
- 2) New Building Sanitary Sewer Service Line Installed By: Apex Excavating (unless otherwise noted).



**BAUGHMAN COMPANY**  
315 Ellis St.  
Wichita, KS 67211  
316-262-7271  
BaughmanCo.com

GLOBE ENGINEERING  
RICHMOND'S 3rd ADD.

**Line 1**

SANITARY SEWER IMPROVEMENTS

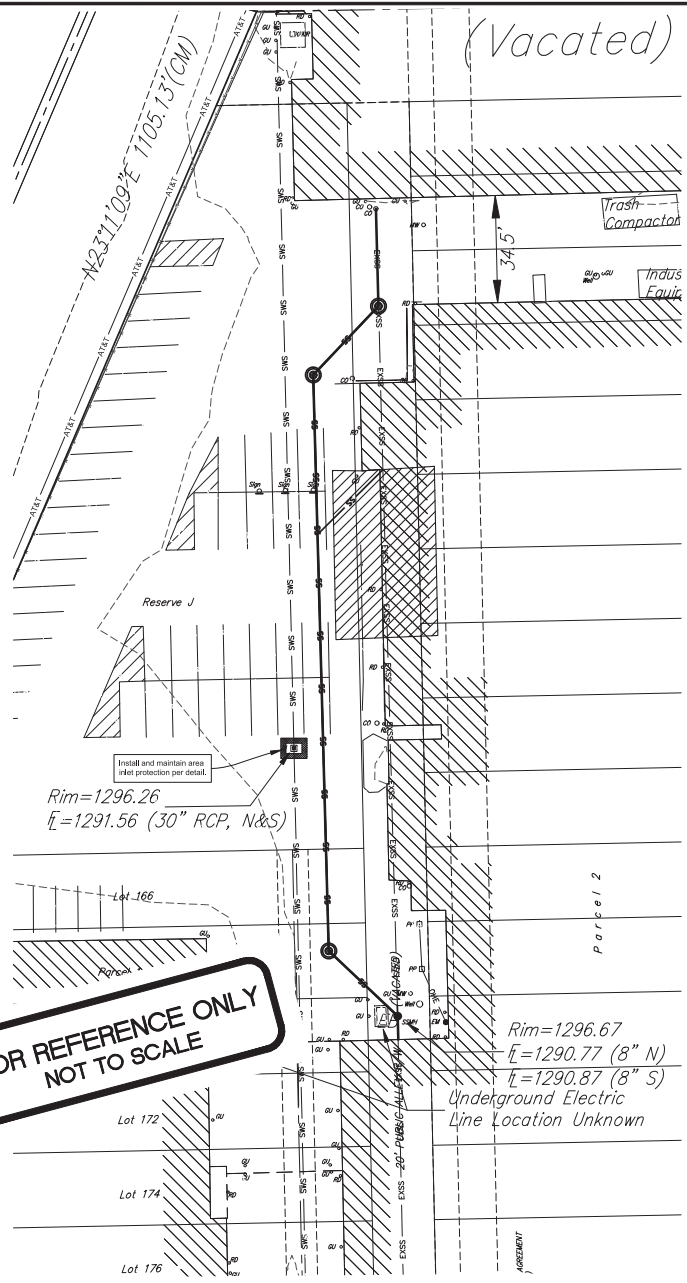
PROJECT NUMBER: 24-12-E985

DESIGN: PDM DRAWN: PDM

DATE: March 27, 2025

SHEET 2 OF 11

File: E:\Projects\2024\Engineering\Bakwood\24-12-E985\PPS.dwg



**FOR REFERENCE ONLY  
 NOT TO SCALE**

  
**BAUGHMAN COMPANY**  
 315 Ellis St.  
 Wichita, KS 67211  
 316-262-7271  
 BaughmanCo.com  
 GLOBE ENGINEERING  
 RICHMOND'S 3RD ADD.  
**EROSION CONTROL PLAN**  
 SANITARY SEWER IMPROVEMENTS  
 PROJECT NUMBER: 24-12-E985  
 DESIGN: DRAWN:  
 DATE: January 16, 2025  
 SHEET **3** OF **11**

File: E:\Projects\2024\Engineering\Berkwood\Phase2\PS\PS.dwg

