

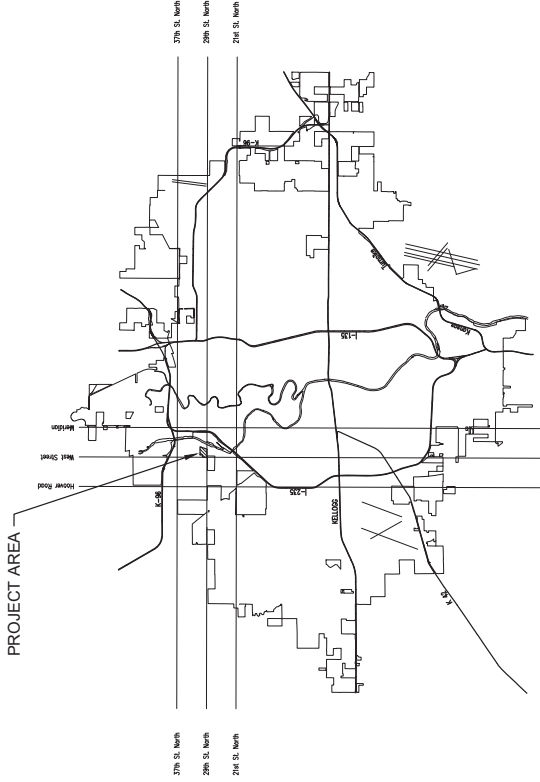
CONSTRUCTION PLANS FOR SANITARY SEWER MAIN IMPROVEMENTS

TO SERVE PINEWAY ADDITION - OFF-SITE

CITY OF WICHITA ENGINEERING PROJECT NO. 468-2024-001191
ORG CODE: 47271124, MUNIS NO.: E4042

CITY OF WICHITA, KS
PAUL GUNZELMAN, P.E. - CITY ENGINEER

BASIN: F-W-02
5150A
5151B
5151C



INDEX OF SHEETS

SHEET NO.	SHEET TITLE
1	CO01 GENERAL NOTES
2	CO02 OFFSITE SS KEYMAP AND BUBBLE MAP
3	CU101 SS MAIN A
4	CU102 SS MAIN A
5	CU103 SS MAIN A
6	CU104 SS MAIN A
7	CU105 SS MAIN A
8	CU501 PRECAST SANITARY SEWER MANHOLE
9	CU502 MANHOLE FRAME & COVER (SANITARY SEWER)
10	CU503 VERTICAL RISER ASSEMBLY SEWER DETAIL
11	CU504 EROSION CONTROL
12	CU505 BMP DETAILS
13	CU506 BMP DETAILS
14	CU507 BMP DETAILS
15	CU508 BMP DETAILS
16	CU509 BMP DETAILS
17	CU510 COPY OF PLAT
18	

Engineering _____
APPROVED AS NOTED
BY WICHITA PUBLIC WORKS
ENGINEERING DIVISION
An approved copy of these plans signed by City staff is required onsite.

OCTOBER 2024



SANITARY SEWER MAIN IMPROVEMENTS TO SERVE PINEWAY ADDITION - OFF-SITE
PAUL GUNZELMAN CITY ENGINEER
CITY OF WICHITA PROJECT NO. 468-2024-001191

JOB NO.	221170-004
DATE	OCTOBER 2024
PM	KPG
DESIGNED BY	KPG
DRAWN BY	B.J.H
CHECKED BY	TBK
TITLE SHEET	
C001	
1 OF 18	

GENERAL NOTES

- ALL CONSTRUCTION AND MATERIALS TO COMPLY WITH CITY OF WICHITA STANDARD SPECIFICATIONS AND DETAILS, UNLESS OTHERWISE INCLUDED IN THE CONTRACT DOCUMENTS.
- EACH BIDDER SHALL VISIT THE SITE OF THE PROJECT BEFORE SUBMITTING THE PROPOSAL FOR THIS WORK SO THAT THEY WILL BE FULLY INFORMED OF THE EXISTING FIELD CONDITIONS AND THE OBSTACLES WHICH MUST BE ENCOUNTERED UPONWARD OF THE PROJECT. THE CONTRACTOR SHALL BE RESPONSIBLE FOR ALL NECESSARY COMPENSATION WITH REGARD TO THE AID/MONEY FOR CONDITIONS THAT MAY HAVE BEEN EVALUATED DURING AN INSPECTION OF THE SITE.
- AT LEAST 72 HOURS PRIOR TO BEGINNING ANY EXCAVATION EXCLUDING EXISTING UTILITY LOCATIONS, THE CONTRACTOR SHALL CONTACT THE KANSAS ONE-CALL SYSTEM A UTILITY LOCATION SERVICE AT (316)487-2470 OR 811 TO REQUEST THE LOCAL UTILITY COMPANIES TO LOCATE ANY EXISTING LINES WITHIN THE PROJECT AREA.
- THE CONTRACTOR MUST NOTIFY THE FOLLOWING IN CASE OF AN EMERGENCY:
 - 911
 - EMERGENCY DISPATCH 888-249-3530
 - COX COMMUNICATIONS 800-363-1183
 - ENERGY 800-298-8313
 - AT&T 866-462-4850
 - KANSAS GAS SERVICE 866-462-4850
- THE CONTRACTOR SHALL GIVE ALL PROPERTY OWNERS AND/OR TENANTS WRITTEN NOTICE OF THE PROPOSED CONSTRUCTION OR EXCAVATION AT LEAST 72 HOURS IN WRITING PRIOR TO THE START OF CONSTRUCTION.
- THE CONTRACTOR SHALL NOT START WORK ON THE PROJECT UNTIL THE PROJECT INSPECTOR IS ASSIGNED AND IS PRESENT ON THE SITE. ANY WORK BEING PERFORMED PRIOR TO THE INSPECTOR'S ARRIVAL WILL BE UNCOVERED FOR INSPECTION AT THE CONTRACTOR'S EXPENSE.
- ALL ELEVATIONS SHOWN ARE NAVD83 DATUM. PRIOR TO CONSTRUCTION THE CONTRACTOR SHALL ESTABLISH CONTROL POINTS AND BENCHMARKS AND VERIFY THEIR ACCURACY.
- EXISTING UTILITIES AND THEIR LOCATION, AS SHOWN ON THE DRAWINGS, LOCATION INFORMATION HAS BEEN OBTAINED FROM THE VARIOUS UTILITY COMPANIES. THE CONTRACTOR SHALL VERIFY THE LOCATION OF ALL OTHER BURIED LINES AND CABLES MAY EXIST WHICH ARE NOT SHOWN ON THE DRAWINGS. THE CONTRACTOR SHALL CONTACT THE UTILITY COMPANIES LOCATED AND LOCATED NEAR THE PROJECT PRIOR TO COMMENCING WORK. THE CONTRACTOR SHALL CONTACT THE ENGINEER AND REVIEW ANY BURIED LINES LOCATED IF CONFLICTS EXIST. THE CONTRACTOR WILL BE RESPONSIBLE FOR OBTAINING THE NECESSARY RIGHTS-OF-WAY FOR THE RIGHT-OF-WAY WHICH DO NOT CONFLICT WITH PROPOSED CONSTRUCTION. THE CONTRACTOR SHALL EXERCISE EXTREME CAUTION TO PROTECT EXISTING UTILITIES AND CABLES. ANY LINES DAMAGED SHALL BE REPAIRED IMMEDIATELY AS DIRECTED BY THE ENGINEER AT THE CONTRACTOR'S EXPENSE.
- THE CONTRACTOR SHALL EXPOSE AND VERIFY THE VERTICAL AND HORIZONTAL ALIGNMENT OF ALL EXISTING UTILITIES. ALL CONFLICTS SHALL BE PERFORMED PRIOR TO THE START OF CONSTRUCTION AND ANY DISCREPANCIES SHALL BE REPORTED IMMEDIATELY TO THE ENGINEER.
- THE CONTRACTOR SHALL BE RESPONSIBLE FOR PRESERVING PROPERTY RIGHTS OF ALL ADJACENT PROPERTY OWNERS. ANY PROPERTY IRONS WHICH ARE DAMAGED OR DESTROYED BY CONSTRUCTION OPERATIONS, SUCH IRONS SHALL BE REESTABLISHED BY A LICENSED LAND SURVEYOR IN ACCORDANCE WITH STATE LAWS.
- EASEMENTS AND RIGHTS-OF-WAY PROVIDED BY THE OWNER FOR THE PROJECT ARE SHOWN ON THE DRAWINGS. THE CONTRACTOR SHALL BE RESPONSIBLE FOR THE ACQUISITION OF ANY ADDITIONAL TEMPORARY EASEMENTS OR RIGHTS-OF-WAY DESIRED TO USE IN COMPLETING THE WORK.
- THE CONTRACTOR SHALL CONTAIN THEIR OPERATIONS TO PERMIT LOCAL AND EMERGENCY TRAFFIC THROUGH AND ACROSS CONSTRUCTION AT ALL TIMES. THE CONTRACTOR SHALL MAINTAIN ACCESS TO ALL ADJACENT LOTS, BARBERCROSS AND CLARREN IN ACCORDANCE WITH THE LATEST VERSION OF THE MANUAL ON UNIFORM TRAFFIC CONTROL DEVICES (MUTCD).

- RUBBLE FROM THE REMOVAL OF MISCELLANEOUS STRUCTURES INCLUDING ANY TREES REMOVED, TREE TRIMMING, AND EXCESS EXCAVATION SHALL BE STORED IN DESIGNATED STORAGE SITES APPROVED BY THE ENGINEER TO SUITABILITY, APPEARANCE, AND SITE LOCATION. LOCATIONS THAT, IN THE OPINION OF THE ENGINEER, WILL BE UNDESIRABLE TO THE ADJACENT PROPERTY OWNERS OR THE PUBLIC SHALL NOT BE APPROVED. ANY MATERIAL DUMPED IN WATERS OF THE HEALTH AND ENVIRONMENT, MATERIAL EITHER STOCKPILED OR DUMPED, SHALL BE SUBJECT TO THE REGULATIONS OF THE KANSAS DEPARTMENT OF AGRICULTURE PERMIT. ANY MATERIAL DUMPED IN WATERS OF THE UNITED STATES, FLOODWAYS, OR WETLANDS IS SUBJECT TO U.S. CORPS OF ENGINEERS PERMITTING REGULATIONS. ANY MATERIAL BURIED OR DUMPED IN A MANNER THAT MAY BE SUBJECT TO ARCHAEOLOGICAL INVESTIGATION UNLESS BURIED IN A PREVIOUSLY APPROVED DISPOSAL LOCATION.
- THE CONTRACTOR SHALL AVOID REMOVAL OR TRIMMING OF ANY TREES REMOVED OR TRIMMING IS UNAVOIDABLE. THIS WORK SHALL BE COORDINATED WITH THE ENGINEER. TREE TRIMMING/REMOVAL SHALL BE APPROVED BY THE ENGINEER. TREE TRIMMING/REMOVAL SHALL BE APPROVED BY THE KANSAS DEPARTMENT OF WILDLIFE, PARKS, AND TOURISM RESTRICTIONS. FULL TREE REMOVAL SHALL BE NOTED ON THE PLANS AND SHALL BE BID AS "TREE REMOVED, LARGER," "TREE REMOVED, SMALL," OR "TREE ROW REMOVED."
- THE CONTRACTOR SHALL RESTORE ALL DITCHES, SWALES, ROAD SHOULDERS, AND BANKS TO THEIR ORIGINAL SIZES AND GRADES EXCEPT AS SHOWN OTHERWISE. WHERE EXISTING ENTRANCE PIPES, MANHOLES, OR STRUCTURES ARE TO BE REMOVED OR REPLACED OR RESET, UNLESS OTHERWISE NOTED ON THE DRAWINGS.
- THE CONTRACTOR SHALL LIMIT THE EXTENT OF TRENCH TO REMAIN OPEN OVERNIGHT AND REBEDDING TO LESS THAN 50 FEET.
- THE CONTRACTOR SHALL NOT BURY MANHOLES OR CLEANOUTS THAT HAVE TOP ELEVATIONS WHICH ARE LOWER THAN EXISTING GROUND. THE GROUND AROUND SUCH MANHOLES AND CLEANOUTS AND AROUND THE ELEVATION OF THE PROPOSED GROUND ELEVATION SHOWN ON THE PLAN PROFILE SHEETS. THE CONTRACTOR SHALL PROVIDE DRAINAGE AWAY FROM THESE MANHOLES OR CLEANOUTS AND SEWER LINES BY MEANS OF TEMPORARY DITCHES OR SLOPING THE GROUND AS REQUIRED.
- THE CONTRACTOR SHALL PROVIDE MOUNDING EARTH AT MANHOLES AND CLEANOUTS THAT HAVE TOP ELEVATIONS GREATER THAN 1 FOOT ABOVE FINISHED GROUND AS SHOWN ON THE DRAWINGS.
- THE CONTRACTOR SHALL PROVIDE POSITIVE DRAINAGE AWAY FROM ALL MANHOLE COVERS.
- THE CONTRACTOR SHALL BE RESPONSIBLE FOR MAINTAINING CONTINUOUS FLOW OF SEWAGE THROUGH CONSTRUCTION. EXISTING SEWER LINES SHALL BE SUBMITTED AND APPROVED BY THE ENGINEER PRIOR TO STARTING AND BY PASSING OF SEWAGE FLOWS.
- THE CONTRACTOR SHALL PREVENT ANY CONSTRUCTION DEBRIS FROM ENTERING THE EXISTING SANITARY SEWER DURING CONSTRUCTION.
- CONTRACTOR SHALL NOT DIVERT ANY SEWAGE FLOW THROUGH NEW PIPE OR MANHOLES UNTIL TESTING HAS BEEN COMPLETED AND ACCEPTED.
- CONTRACTOR SHALL PATCH ALL UTILITY CROSSINGS A MINIMUM OF 200 HDB INSTALLATION. CONTRACTOR TO NOTIFY INSPECTOR AND ENGINEER OF ANY CONFLICTS.
- THE CONTRACTOR SHALL INSTALL AND MAINTAIN EROSION CONTROL. CONTRACTOR SHALL BE RESPONSIBLE FOR MAINTAINING EROSION CONTROL THROUGH THE COMPLETION OF THIS PROJECT. INSTALLATION OF EROSION CONTROL SHALL BE THE RESPONSIBILITY OF ABATING SOIL EROSION. THE QUANTITIES ARE ESTIMATED AND SHOULD BE CONSIDERED THE MINIMUM EFFORT REQUIRED (REFERENCE THE EROSION CONTROL PLAN, SHEET NO. C0-594).
- THE CONTRACTOR SHALL TAKE CARE TO PREVENT SILT AND DEBRIS FROM ENTERING ANY STORM DRAINAGE SYSTEM DURING CONSTRUCTION. PIPES SHALL BE PROTECTED FROM DAMAGE. ALL EXISTING UTILITY CROSSINGS ACTIVITIES SHALL BE THOROUGHLY CLEANED BY THE CONTRACTOR AT THEIR OWN EXPENSE, PRIOR TO THE FINAL INSPECTION.

- RECONSTRUCTION OF EROSION CONTROL MEASURES WHICH WERE DESTROYED BY WIND, FLOOD, FIRE, OR BY THE ACTIONS OF THE CITY OF WICHITA SHALL BE RECONSTRUCTED TO ORIGINAL CONDITIONS AS DIRECTED BY THE ENGINEER. NO ADDITIONAL COST. RECONSTRUCTION ADJUSTMENTS IN QUANTITIES ARE REQUIRED BY FIELD CONDITIONS. THERE SHALL BE NO ADJUSTMENT IN UNIT PRICE.
- ALL LANDSCAPE AREAS DESTROYED BY CONSTRUCTION OF THE PROPOSED IMPROVEMENTS SHALL BE RESTORED WITH THE SAME GRASS/SHrub AS EXISTING. RESTORATION OF DISTURBED AREAS SHALL INCLUDE, BUT NOT BE LIMITED TO, SOIL, SEEDING, MULCHING, AND WEEDING. ALL SEEDING/SODDING WORK SHALL BE IN ACCORDANCE WITH THE CITY OF WICHITA STANDARD SPECIFICATIONS AND THE CITY OF WICHITA ADMINISTRATIVE REGULATION NO. 065 WHICH GOVERNS WEEDING AND MAINTENANCE OF OPEN SPACE. ALL WEEDING/FOLLOWING CONSTRUCTION.
- THE CONTRACTOR SHALL SEED ALL AREAS DISTURBED BY CONSTRUCTION ACTIVITIES WITH RYE GRASS, RYE GRASS/LEGUME MIXTURE, OR FESCUE. SEEDING SHALL BE DONE AT A RATE THAT SHALL PRODUCE FEET WITH TEMPORARY SEEDING. SEEDING SHALL BE OMITTED ONLY IF PERMANENT SEEDING/SODDING IS APPLIED. TEMPORARY SEEDING OR PERMANENT SEEDING/SODDING SHALL BE APPLIED WITHIN 14 DAYS AFTER THE AREA HAS BEEN DISTURBED.
- CITY OF WICHITA SHALL BE RESPONSIBLE FOR CONSTRUCTION STAKING. STAKING AND BENCHMARKS DESTROYED DURING CONSTRUCTION OPERATIONS SHALL BE REPLACED AT THE CONTRACTOR'S EXPENSE.
- CONTRACTOR SHALL MAINTAIN UNINTERRUPTED UTILITY SERVICE TO ADJACENT FACILITIES DURING CONSTRUCTION, UNLESS OTHERWISE APPROVED BY OWNER.
- WORKS INDICATED IN THE DRAWINGS, THE SANITARY SEWER EXCAVATION SHALL BE FULLY DUG AND UNLINED, LIFTED AND WEDGED, WITH WATER PER THE REQUIREMENTS LISTED IN THE STANDARD SPECIFICATIONS FOR THE CITY OF WICHITA, UNLESS FLOWABLE FILL OR OTHER MATERIAL IS SPECIFICALLY NOTED ON THE DRAWINGS. UNIT PRICE BID FOR "LET-TED SAND BACKFILL."
- MAINTAIN A MINIMUM OF 10-FOOT HORIZONTAL SEPARATION BETWEEN ALL WATER LINES (WATER MAINS, SERVICES, AND FIRE HYDRANTS) AND ALL SANITARY SEWER LINES (SEWER MAINS, SERVICES, AND FIRE HYDRANTS). SEPARATION DISTANCES ARE TO BE MEASURED FROM EDGE-TO-EDGE, AT THE CLOSEST POINT.
- MAINTAIN A MINIMUM OF 2-FOOT VERTICAL SEPARATION BETWEEN ALL WATER LINES (WATER MAINS AND SERVICES) AND ALL SANITARY SEWER LINES (SEWER MAINS AND SERVICES) AT CROSSINGS. WATER LINES MUST ALWAYS BE PLACED ABOVE PRESSURIZED SANITARY SEWER LINES WHERE THEY CROSS. ALL SEPARATION DISTANCES ARE TO BE MEASURED FROM EDGE-TO-EDGE, AT THE CLOSEST POINT.
- MAINTAIN A MINIMUM OF 2-FOOT VERTICAL SEPARATION BETWEEN ALL SANITARY SEWER LINES (SEWER MAINS AND SERVICES) AND ALL SANITARY SEWER LINES (SEWER MAINS AND SERVICES) AT CROSSINGS. WATER LINES MUST ALWAYS BE PLACED ABOVE PRESSURIZED SANITARY SEWER LINES WHERE THEY CROSS. ALL SEPARATION DISTANCES ARE TO BE MEASURED FROM EDGE-TO-EDGE, AT THE CLOSEST POINT.
- CONTRACTOR TO CORROBORATE UTILITY OF WICHITA FOR ACCESS TO CITY-OWNED PROPERTY FOR INSTALLATION OF SANITARY SEWER MAIN. CONTACT LOGAN WALKER AT LWALKER@WICHITA.GOV. 316-289-4766.

UTILITY CONTACTS

- KEVIN GRASBY
WICHITA SANITARY SEWER
7TH FLOOR, CITY HALL
405 N. MAIN
WICHITA, KS 67202
316-264-4329
- REG LOULEY
KANSAS GAS SERVICE
7TH FLOOR, CITY HALL
405 N. MAIN
WICHITA, KS 67202
316-264-4329
- JOE HICKLE
BLACK HILLS ENERGY
8TH FLOOR, CITY HALL
405 N. MAIN
WICHITA, KS 67202
316-264-4329
- DAVID MILAM
BERGWICK COUNTY
P.O. BOX 208
WICHITA, KS 67201
316-264-4329
- MATT BORTZ & TRAVIS TAYLOR
P.O. BOX 208
WICHITA, KS 67201
316-264-4329
- RICHARD MITTEN
ENERGY
CENTRAL (8RD FLOOR)
P.O. BOX 208
WICHITA, KS 67201
316-264-4329
- ASO/KENWARRS
WICHITA CENTRAL UNIT
154 N. BROADWAY, ROOM 210
WICHITA, KS 67202
316-264-508
- SARA PROCTOR & ADAM INCLIA
KANSAS GAS SERVICE
7TH FLOOR, CITY HALL
405 N. MAIN
WICHITA, KS 67202
316-264-4329
- ADAM INCLIA & CHRIS KELLY
BLACK HILLS ENERGY
8TH FLOOR, CITY HALL
405 N. MAIN
WICHITA, KS 67202
316-264-4329
- CHRIS KELLY 316-554-6300
RAY ORTEGA 702-540-3005
WICHITA, KS 92205

DEVELOPER CONTACT

MR. RYAN MILLS
101 W. DOLGAS
WICHITA, KS 67213
RYAN@2K3VENTURES.COM



SANITARY SEWER MAIN IMPROVEMENTS TO SERVE PINEWAY ADDITION - OFF-SITE

PAUL GUNZELMAN CITY ENGINEER
CITY OF WICHITA PROJECT NO. 466-2024-001191

DATE	JOB NO.
OCTOBER 2024	221170-004
DESIGNED BY	KPG
DRAWN BY	BJH
CHECKED BY	TBK

GENERAL NOTES
C002
2 OF 18

6

5

4

3

2

1

6

5

4

3

2

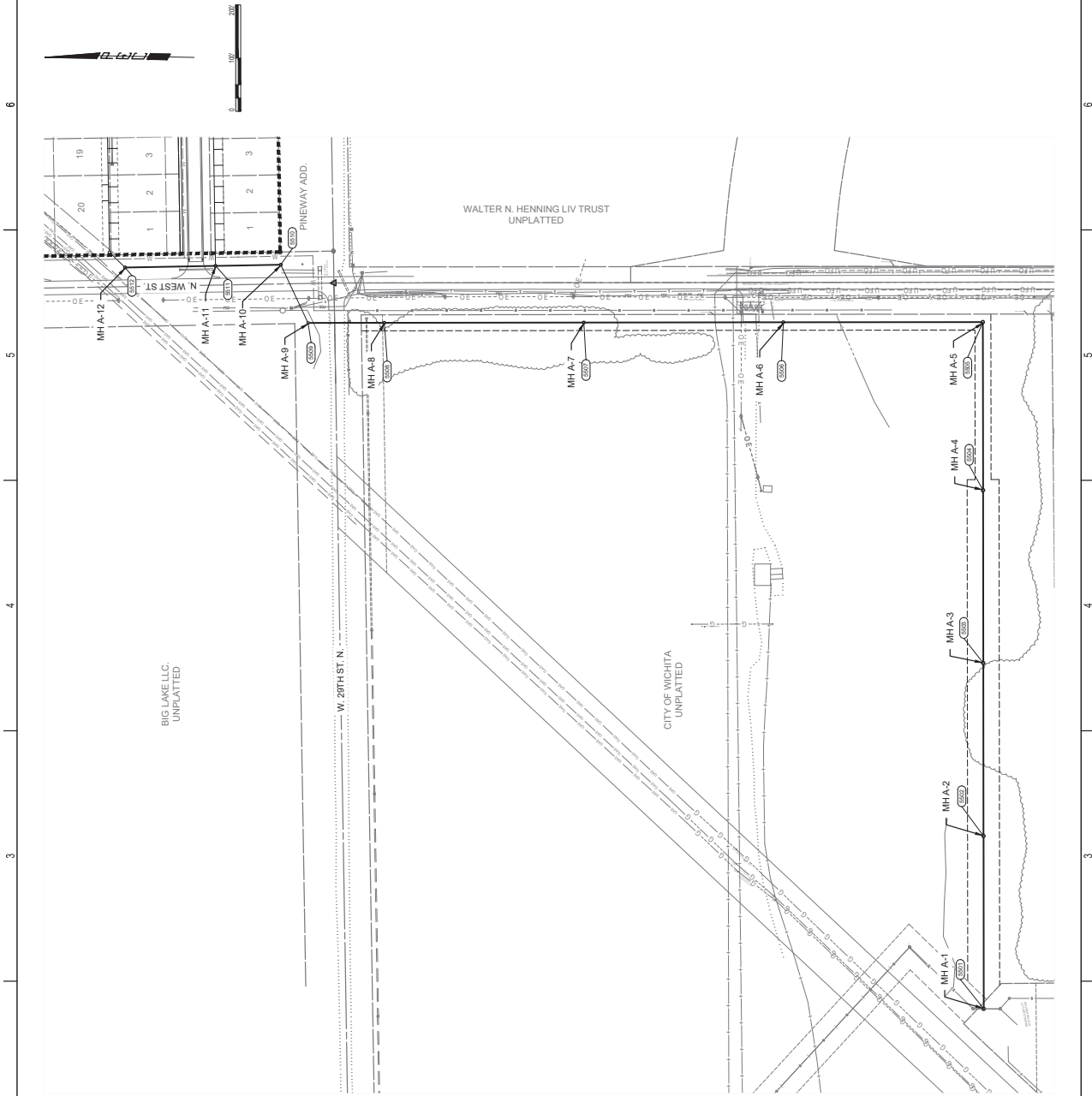
1



SANITARY SEWER MAIN IMPROVEMENTS TO SERVE PINEWAY ADDITION - OFF-SITE
 PAUL GUNZELMAN CITY ENGINEER
 CITY OF WICHITA PROJECT NO. 468-2024-001191

JOB NO.	221170-004
DATE	OCTOBER 2024
PM	KFG
DESIGNED BY	KFG
DRAWN BY	B.J.H.
CHECKED BY	T.B.K.
OFFSITE SS KEY MAP AND BUBBLE MAP	

C003
3 OF 18



- LEGEND**
- EXISTING SANITARY SEWER WITH MANHOLE
 - PROPOSED SANITARY SEWER WITH MANHOLE
 - BENEFIT DISTRICT

OFFSITE SANITARY SEWER BENEFIT DISTRICT
 LOTS 1 THRU 39, BLOCK A (NOT SHOWN),
 LOTS 1 THRU 20, BLOCK B (NOT SHOWN), &
 LOTS 1 THRU 10, BLOCK C (NOT SHOWN) IN THE
 PINEWAY ADDITION TO WICHITA, SEDGWICK
 CO., KANSAS.

DATUM BENCHMARK, VERTICAL DATUM IS NAD 88 DERIVED FROM THE NATIONAL SPATIAL REFERENCE FRAMEWORK. ORTHOMETRIC HEIGHT WAS DETERMINED USING THE GEOID 18 (CONUS) MODEL. UNITS ARE U.S. SURVEY FEET.

BENCH MARK LIST

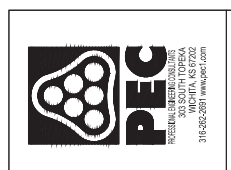
BM1, CHISELED SQUARE CUT IN NORTHEAST CORNER OF RCPD APPROXIMATELY 27.1 FEET NORTHWEST OF THE SOUTHWEST CORNER OF ELEV=112223 NAD 88

BM2, CHISELED SQUARE CUT IN NORTHWEST CORNER OF RCPD APPROXIMATELY 29.9 FEET SOUTHEAST OF THE SOUTHEAST CORNER OF ELEV=118.49 NAD 88

SOUTHWEST SECTION CORNER, RANGE 1 WEST, CENTER ROUNDED RAILROAD SPIKE, 1" RED OIL ASPHALT SURFACE

- 37.25' NE TO THE CENTER OF CITY DISC NEAR THE NORTH END
- 13.5' S TO THE CENTER OF A CHAIN LINK FENCE TO THE EAST
- 15.5' N TO THE LINE OF A CHAIN LINK FENCE TO THE EAST
- 1.5' W TO THE CENTER OF A PAVED ROADWAY

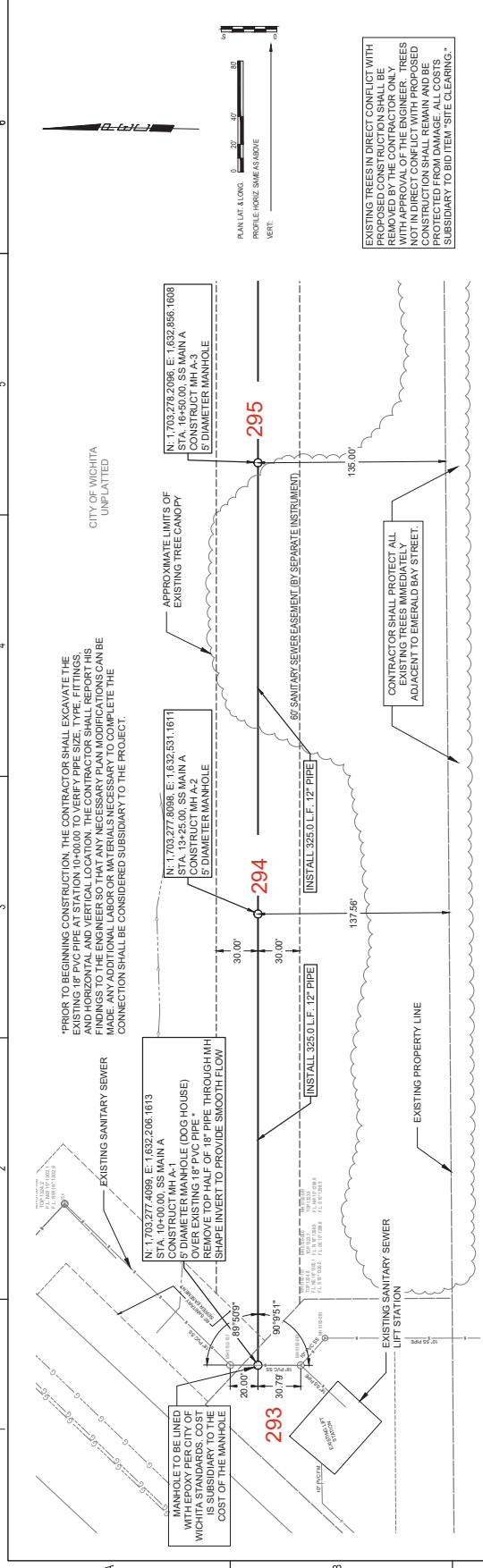
COORDINATE LIST		
POINT	NORTHING	EASTING
5501	1,703,277.4098	1,632,206.1613
5502	1,703,277.8098	1,632,331.1611
5503	1,703,278.2098	1,632,456.1608
5504	1,703,278.6094	1,633,181.1606
5505	1,703,278.9984	1,633,497.3152
5506	1,703,653.9981	1,633,456.8342
5507	1,704,028.9978	1,633,456.3926
5508	1,704,403.9975	1,633,456.8722
5509	1,704,547.3430	1,633,456.7549
5510	1,704,598.6073	1,633,605.2886
5511	1,704,721.0881	1,633,602.9099
5512	1,704,801.2855	1,633,599.9215



**SANITARY SEWER MAIN
IMPROVEMENTS
TO SERVE
PINEWAY ADDITION - OFF-SITE**

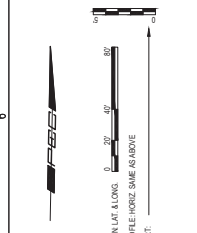
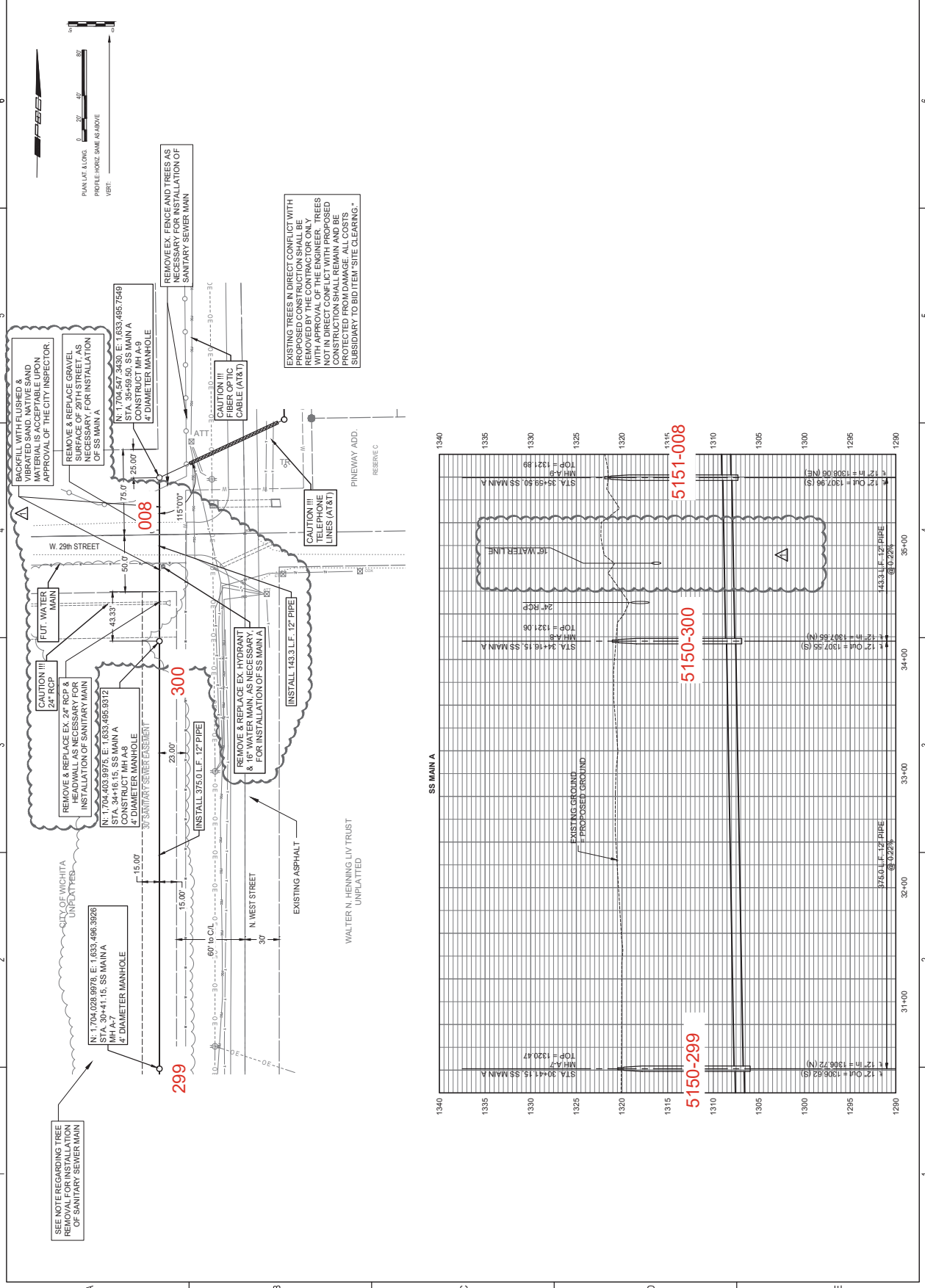
PAUL GUNZELMAN CITY ENGINEER
CITY OF WICHITA PROJECT NO.
468-2024-001191

DATE	221170-004
DATE	OCTOBER 2024
DESIGNED BY	KFG
DRAWN BY	BJH
CHECKED BY	TBK
SS MAIN A	
CU101	
4 OF 18	



EXISTING TREES IN DIRECT CONFLICT WITH PROPOSED CONSTRUCTION SHALL BE REMOVED. TREES NOT IN DIRECT CONFLICT WITH PROPOSED CONSTRUCTION SHALL REMAIN AND BE PROTECTED FROM DAMAGE. A LOGGING SUBSIDIARY TO BID THEIR SITE CLEANING.





SEE NOTE REGARDING TREE REMOVAL FOR INSTALLATION OF SANITARY SEWER MAIN

BACKFILL WITH FLUSHED & NON-FLAMMABLE MATERIALS ACCEPTABLE UPON APPROVAL OF THE CITY INSPECTOR.

REMOVE & REPLACE GRAVEL SURFACE OF 29TH STREET, AS SHOWN FOR INSTALLATION OF SS MAIN A

REMOVE & REPLACE EX. 24" RCP & 18" WATER MAIN AS NECESSARY FOR INSTALLATION OF SS MAIN A

CONSTRUCT MH A-8 4" DIAMETER MANHOLE STA. 34+16.15, SS MAIN A

CONSTRUCT MH A-9 4" DIAMETER MANHOLE STA. 35+59.50, SS MAIN A

CONSTRUCT MH A-9 4" DIAMETER MANHOLE STA. 1704.547.3430, E: 1.633.495.7549

INSTALL 143.3 L.F. 12" PIPE

INSTALL 375.0 L.F. 12" PIPE

INSTALL 143.3 L.F. 12" PIPE

REMOVE & REPLACE EX. HYDRANT & 18" WATER MAIN AS NECESSARY FOR INSTALLATION OF SS MAIN A

REMOVE EX. FENCE AND TREES AS NECESSARY FOR INSTALLATION OF SANITARY SEWER MAIN

CAUTION III FIBER OPTIC CABLE (AT&T)

CAUTION III TELEPHONE LINES (AT&T)

EXISTING TREES IN DIRECT CONFLICT WITH PROPOSED CONSTRUCTION SHALL BE REMOVED BY THE CONTRACTOR ONLY WITH APPROVAL OF THE ENGINEER. TREES NOT IN DIRECT CONFLICT WITH PROPOSED CONSTRUCTION SHALL REMAIN AND BE MAINTAINED BY THE CONTRACTOR. SUBSIDIARY TO BID ITEM "SITE CLEARING."

EXISTING ASPHALT

WALTER N. HENNING LIV TRUST UNPLATTED

CAUTION III TELEPHONE LINES (AT&T)

CAUTION III FIBER OPTIC CABLE (AT&T)

REMOVE EX. FENCE AND TREES AS NECESSARY FOR INSTALLATION OF SANITARY SEWER MAIN

CONSTRUCT MH A-9 4" DIAMETER MANHOLE STA. 1704.547.3430, E: 1.633.495.7549

REMOVE & REPLACE GRAVEL SURFACE OF 29TH STREET, AS SHOWN FOR INSTALLATION OF SS MAIN A

BACKFILL WITH FLUSHED & NON-FLAMMABLE MATERIALS ACCEPTABLE UPON APPROVAL OF THE CITY INSPECTOR.

Station	Manhole	Pipe Size	Length (L.F.)	Proposed Ground Elevation	Existing Ground Elevation
311+00	MH A-7	12"	15.00	1306.62 (S)	1306.72 (N)
324+00	MH A-8	12"	127.55	1307.55 (S)	1307.55 (N)
344+00	MH A-9	12"	59.50	1321.98	1321.98
350+00	MH A-9	12"	1.00	1307.96 (S)	1307.96 (N)

SS MAIN A

1340

1335

1330

1325

1320

1315

1310

1305

1300

1295

1290

31+00

32+00

33+00

34+00

35+00

5151-008

5150-300

5150-299

15" RCP

24" RCP

18" WATER LINE

EXISTING GROUND

PROPOSED GROUND

W. 29th STREET

N. WEST STREET

EXISTING ASPHALT

WALTER N. HENNING LIV TRUST UNPLATTED

CAUTION III TELEPHONE LINES (AT&T)

CAUTION III FIBER OPTIC CABLE (AT&T)

REMOVE EX. FENCE AND TREES AS NECESSARY FOR INSTALLATION OF SANITARY SEWER MAIN

CONSTRUCT MH A-9 4" DIAMETER MANHOLE STA. 1704.547.3430, E: 1.633.495.7549

REMOVE & REPLACE GRAVEL SURFACE OF 29TH STREET, AS SHOWN FOR INSTALLATION OF SS MAIN A

BACKFILL WITH FLUSHED & NON-FLAMMABLE MATERIALS ACCEPTABLE UPON APPROVAL OF THE CITY INSPECTOR.

SANITARY SEWER MAIN IMPROVEMENTS TO SERVE PINEWAY ADDITION - OFF-SITE

PAUL GUNZELMAN CITY ENGINEER
CITY OF WICHITA PROJECT NO. 468-2024-001191

JOB NO.	221170-004
DATE	OCTOBER 2024
DESIGNED BY	KPG
DRAWN BY	BAH
CHECKED BY	TBK

SS MAIN A

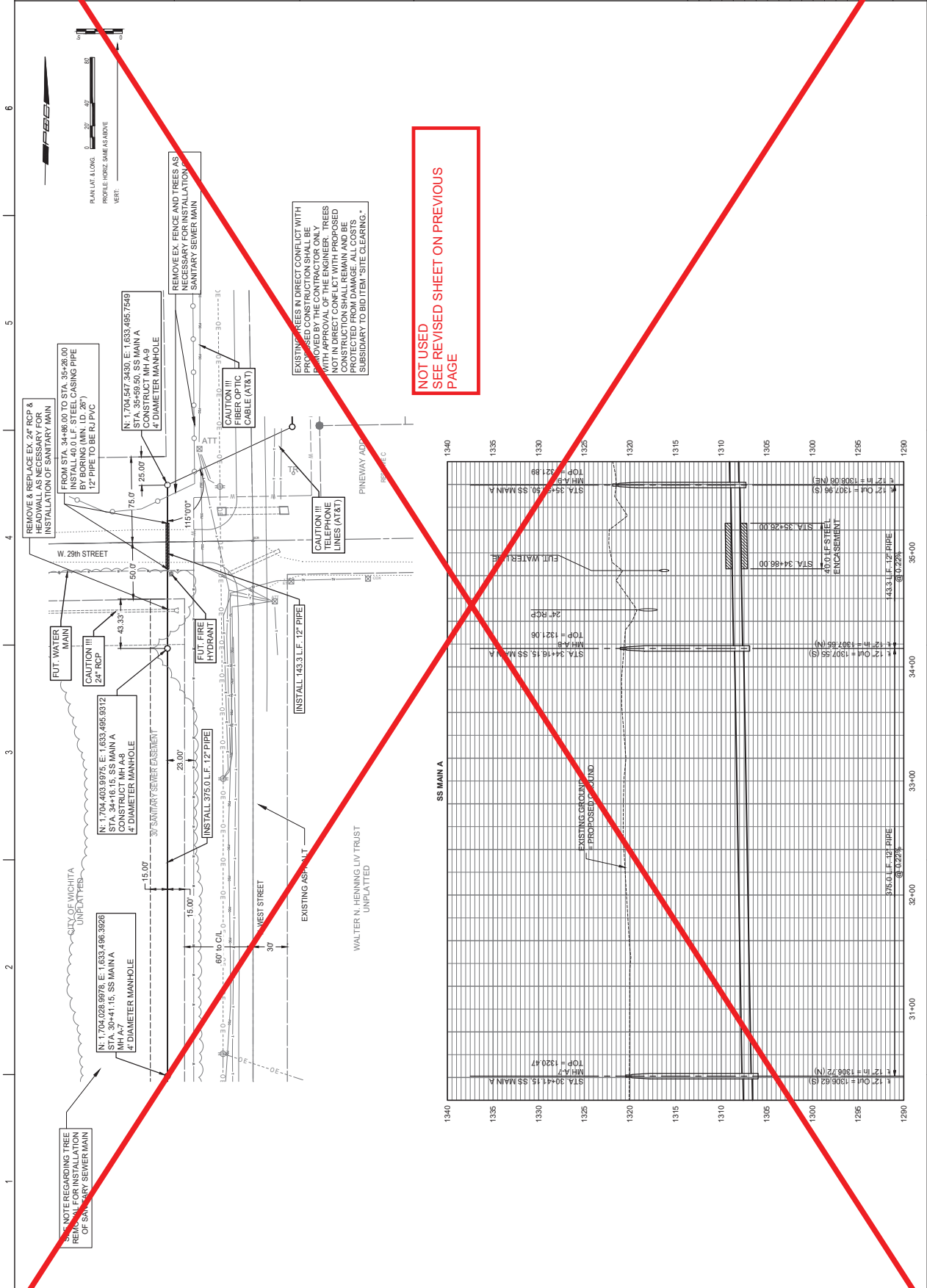
CU104

7 OF 18

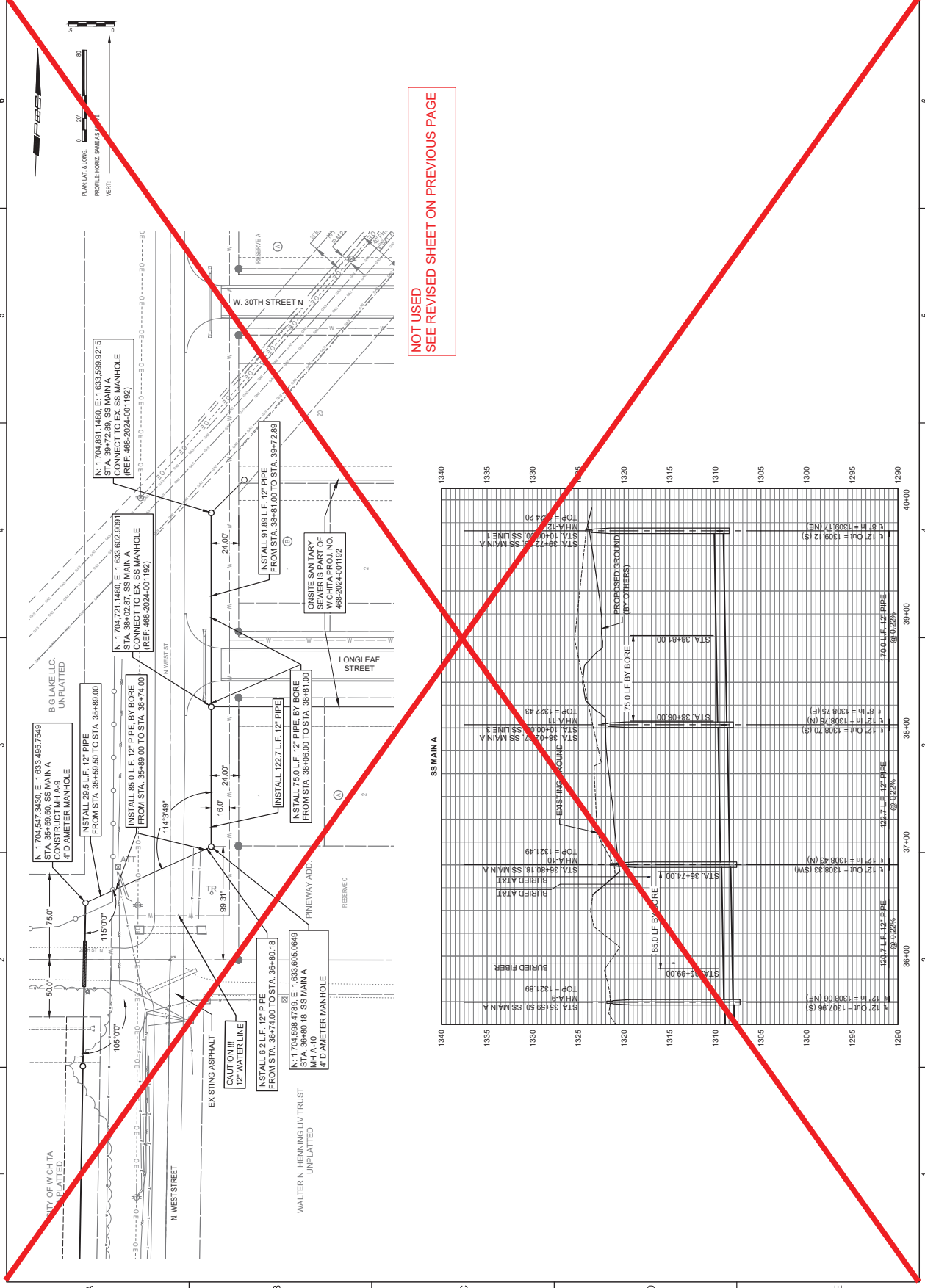


PAUL GUNZELMAN CITY ENGINEER
 CITY OF WICHITA PROJECT NO. 468-2024-001191
 IMPROVEMENTS TO SERVE
 PINEWAY ADDITION - OFF-SITE
 SANITARY SEWER MAIN

JOB NO.	221170-004
DATE	OCTOBER 2024
PM	KFG
DESIGNED BY	KFG
DRAWN BY	BJH
CHECKED BY	TBK
SS MAIN A	
CU104	
7 OF 18	



NOT USED
 SEE REVISED SHEET ON PREVIOUS PAGE



NOT USED
SEE REVISED SHEET ON PREVIOUS PAGE



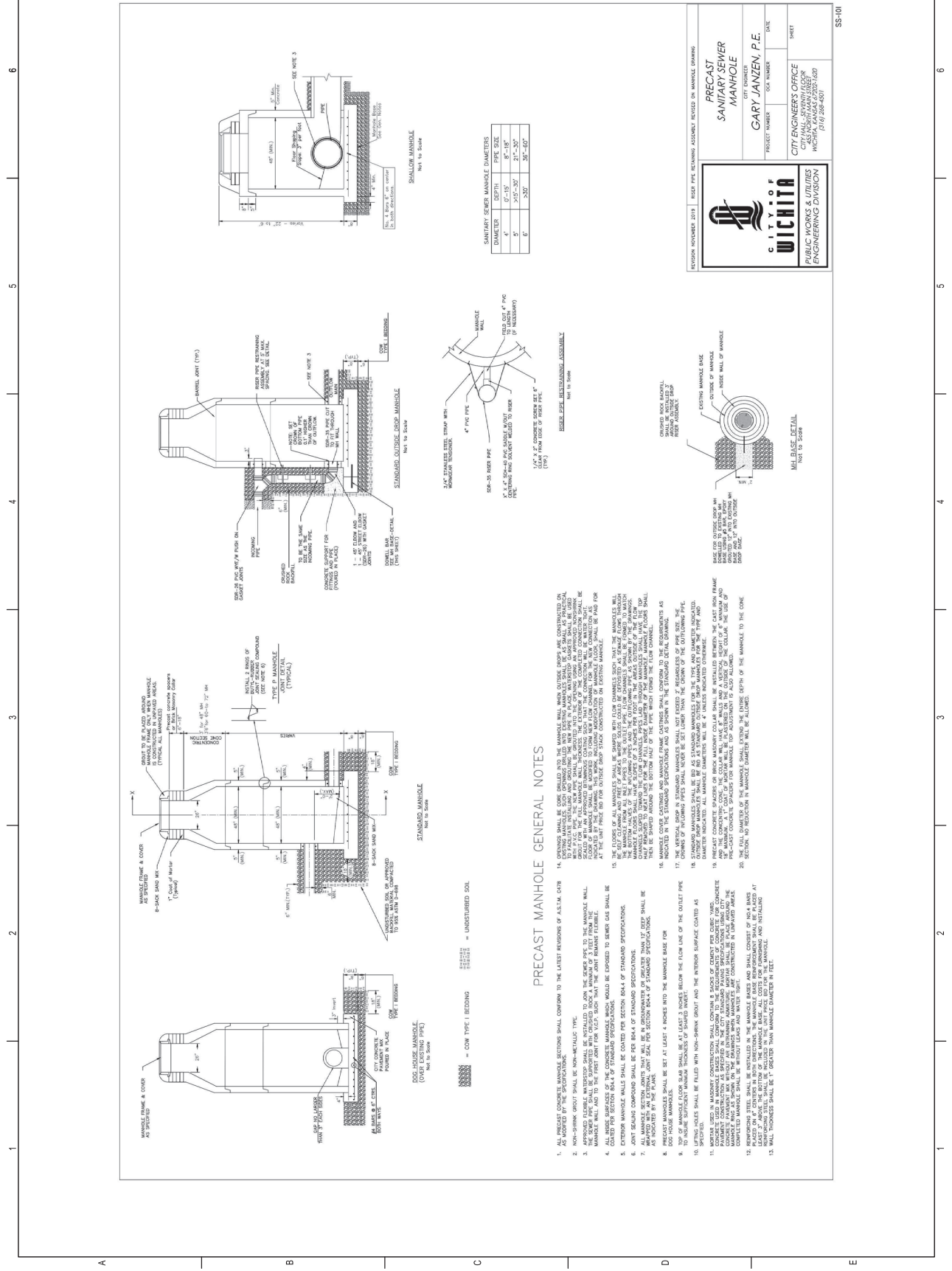
IMPROVEMENTS
TO SERVE
PINEWAY ADDITION - OFF-SITE
PAUL GUNZELMAN CITY ENGINEER
CITY OF WICHITA PROJECT NO.
468-2024-001191

JOB NO.	221170-004
DATE	OCTOBER 2024
PM	KFG
DESIGNED BY	KFG
DRAWN BY	BJH
CHECKED BY	TBK
SS MAIN A	
CU105	
8 OF 18	



SANITARY SEWER MAIN IMPROVEMENTS TO SERVE PINEWAY ADDITION - OFF-SITE
 CITY OF WICHITA PROJECT NO. 468-2024-001191
 PAUL GUNZELMAN CITY ENGINEER

JOB NO.	221170-004
DATE	OCTOBER 2024
DESIGNED BY	KPG
DRAWN BY	B.J.H.
CHECKED BY	T.B.K.
PROJECT	SANITARY SEWER MAINHOLE
CU501 9 OF 18	



REVISION NOVEMBER 2019 | RISE PIPE ELEVATION ASSEMBLY REVISED ON MANHOLE DRAWING

PRECAST SANITARY SEWER MANHOLE

GARY JANZEN, P.E.
 CITY ENGINEER

CITY ENGINEERS OFFICE
 CITY HALL - SEVEN/FLOOR
 WICHITA, KANSAS 67202-1620
 (316) 268-4507

PROJECT NUMBER: 221170-004
 SHEET: SS-101

PRECAST MANHOLE GENERAL NOTES

1. ALL PRECAST CONCRETE MANHOLE SECTIONS SHALL CONFORM TO THE LATEST EDITIONS OF ALL CEN. CEN.
2. NON-SHRINK GROUT SHALL BE NON-METALLIC TYPE.
3. THE SINKER SHALL BE SUPPORTED WITH COARSE ROCK. A MINIMUM OF 3" LIFT FROM THE MANHOLE WALL AND TO THE FIRST JOINT FOR EACH SINKER THAT THE JOINT REMAINS FULLENER.
4. COARSE ROCK SHALL BE PLACED AROUND THE SINKER AND TO THE FIRST JOINT FOR EACH SINKER THAT THE JOINT REMAINS FULLENER.
5. EXTERIOR MANHOLE WALLS SHALL BE COATED PER SECTION 804.4 OF STANDARD SPECIFICATIONS.
6. JOINT SEALING COMPOUND SHALL BE PER 804.4 OF STANDARD SPECIFICATIONS.
7. MANHOLE JOINTS SHALL BE COATED WITH AN ELASTIC JOINT SEAL PER SECTION 804.4 OF STANDARD SPECIFICATIONS.
8. PRECAST MANHOLES SHALL BE SET AT LEAST 4 INCHES INTO THE MANHOLE BASE FOR
9. TO USE AT MINIMUM THICKNESS OF 6" BELOW THE FLOOR LINE OF THE OUTLET PIPE
10. WORKER USED IN MASONRY CONSTRUCTION SHALL CONFORM TO BACKS OF JOINTS PER CEN. 548.
11. JOINTS SHALL BE COATED WITH AN ELASTIC JOINT SEAL PER SECTION 804.4 OF STANDARD SPECIFICATIONS.
12. PLACED ON 4" OF COARSE INERT FILL IN BOTH DIRECTIONS. THE MANHOLE BASE REINFORCEMENT SHALL BE PLACED AT MANHOLE BASE WITHIN THE MANHOLE WALLS AND SHALL BE SET AT LEAST 4 INCHES INTO THE MANHOLE AND INSTALLING REINFORCING STEEL SHALL BE INCLUDED IN THE FINAL PRICE FOR THE MANHOLE.
13. WALL THICKNESS SHALL BE 1" THICKER THAN MANHOLE DIAMETER IN FEET.

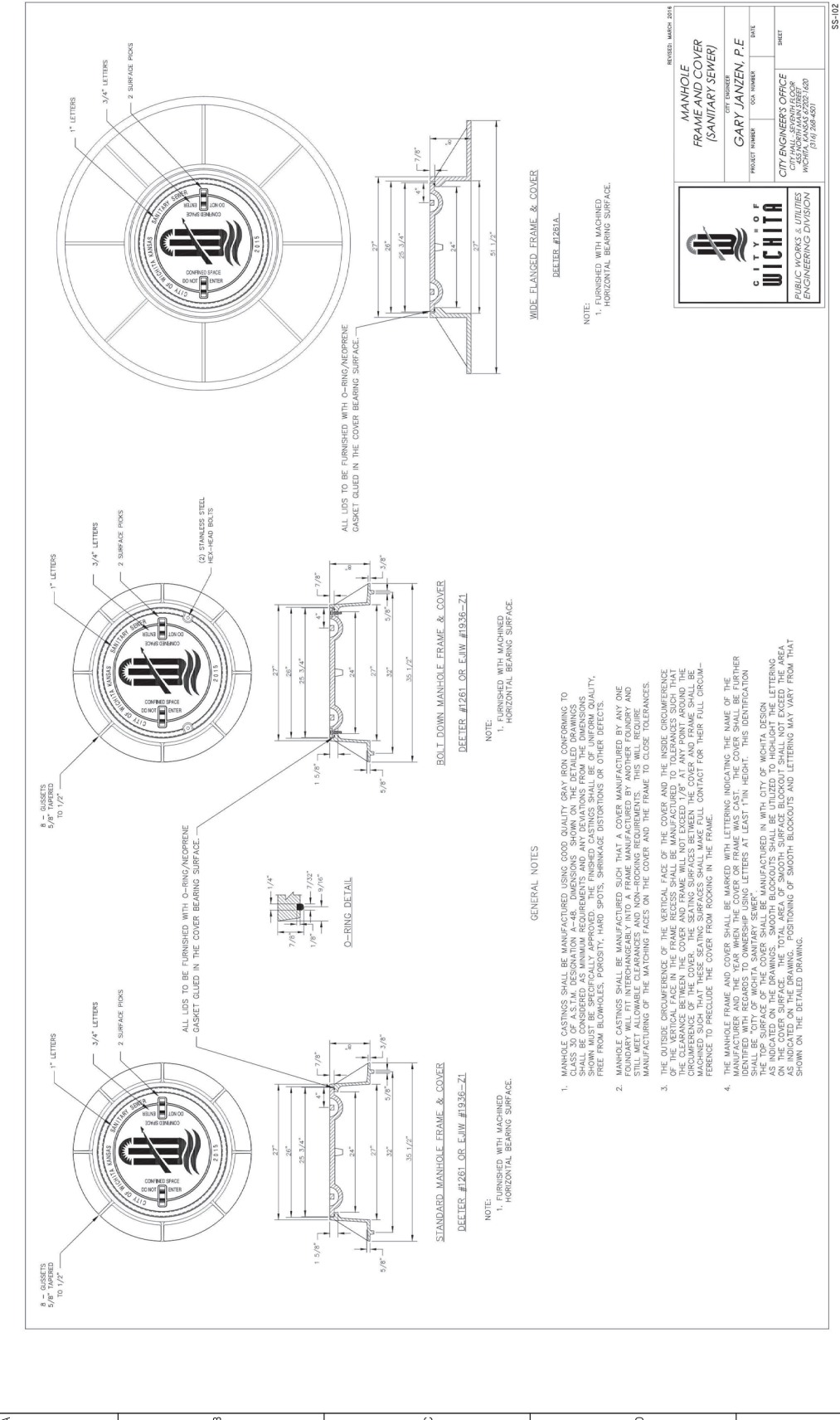
14. GROUNDING SHALL BE DONE ORBLED INTO THE MANHOLE WALL WHEN OUTSIDE SINKER ARE CONSTRUCTED ON EXISTING MANHOLES. SUCH WORKING SHALL BE DONE DURING MANHOLE INSTALLATION AS SHALL BE INDICATED BY NOTES ON DRAWING. THE MANHOLE WALL SHALL BE SET AT LEAST 4 INCHES INTO THE MANHOLE WALL AND TO THE FIRST JOINT FOR EACH SINKER THAT THE JOINT REMAINS FULLENER.
15. THE FLOORS OF ALL MANHOLES SHALL BE SHAPED WITH FLOW CHANNELS SUCH THAT THE MANHOLES WILL BE FULLY CLEANED BY THE FLOW OF SEWAGE. THE FLOORS SHALL BE SET AT LEAST 4 INCHES INTO THE MANHOLE WALL AND TO THE FIRST JOINT FOR EACH SINKER THAT THE JOINT REMAINS FULLENER.
16. THE FLOORS OF ALL MANHOLES SHALL BE SHAPED WITH FLOW CHANNELS SUCH THAT THE MANHOLES WILL BE FULLY CLEANED BY THE FLOW OF SEWAGE. THE FLOORS SHALL BE SET AT LEAST 4 INCHES INTO THE MANHOLE WALL AND TO THE FIRST JOINT FOR EACH SINKER THAT THE JOINT REMAINS FULLENER.
17. MANHOLE COVER CASTINGS AND MANHOLE FRAME CASTINGS SHALL CONFORM TO THE REQUIREMENTS AS INDICATED IN THE STANDARD SPECIFICATIONS AND AS SHOWN IN THE STANDARD DETAIL DRAWING.
18. STANDARD MANHOLES SHALL BE AS 24" STANDARD MANHOLES FOR 24" SINKERS AND 30" STANDARD MANHOLES FOR 30" SINKERS. ALL MANHOLE DIAMETERS WILL BE 4" UNDER INDICATED DIMENSION.
19. THE CONCRETE COVER, THE COLLAR WALL, THE WALL AND A VERTICAL HEIGHT OF 4" MANHOLE AND PRECAST CONCRETE SPACERS FOR MANHOLE TOP ADJUSTMENT IS ALSO ALLOWED.
20. THE FULL DIAMETER OF THE MANHOLE SHALL EXCEED THE CENTRE DEPTH OF THE MANHOLE TO THE CONE SECTION TO REDUCION IN MANHOLE DIAMETER WILL BE ALLOWED.



**SANITARY SEWER MAIN
IMPROVEMENTS
TO SERVE
PINEWAY ADDITION - OFF-SITE
CITY OF WICHITA PROJECT NO.
468-2024-001191**

JOB NO.	221170-004
DATE	OCTOBER 2024
DESIGNED BY	KPG
DRAWN BY	B.JH
CHECKED BY	TBK
MANHOLE FRAME & COVER (SANITARY SEWER)	
CU502 10" OF 18"	

1 2 3 4 5 6





PAUL GUNZELMAN CITY ENGINEER
CITY OF WICHITA PROJECT NO. 468-2024-001191
IMPROVEMENTS TO SERVE PINEWAY ADDITION - OFF-SITE

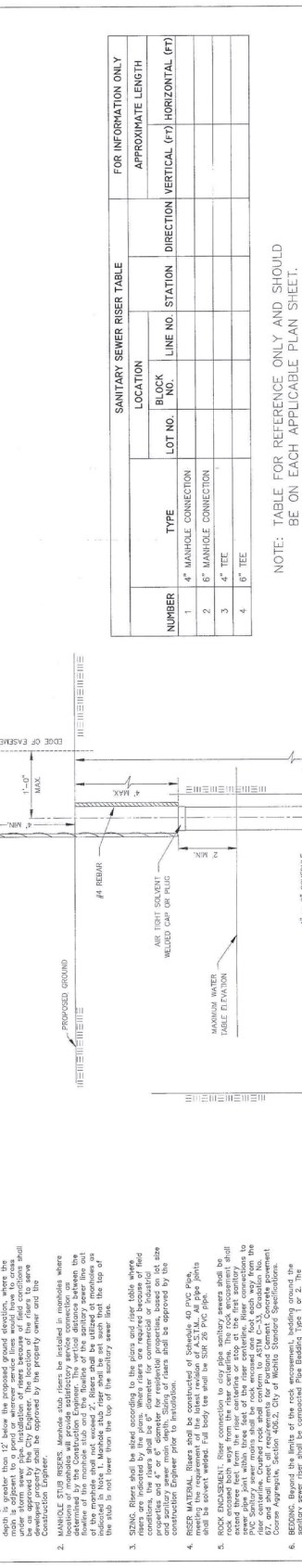
JOB NO.	221170-004
DATE	OCTOBER 2024
PM	KPG
DESIGNED BY	KPG
DRAWN BY	B.J.H.
CHECKED BY	T.B.K.
VERTICAL RISER ASSEMBLY SERVER DETAIL	
CU503	
11 OF 18	

1 2 3 4 5 6

GENERAL NOTES

- APPLICATION. Riser shall be installed to serve all lots or tracts where the sanitary sewer is shown on the sewer map. The riser shall be installed in accordance with the applicable codes and standards. The riser shall be installed in accordance with the applicable codes and standards. The riser shall be installed in accordance with the applicable codes and standards.
- MANHOLE. Manhole shall be installed in accordance with the applicable codes and standards. The manhole shall be installed in accordance with the applicable codes and standards. The manhole shall be installed in accordance with the applicable codes and standards.
- SIZE. Riser shall be installed in accordance with the applicable codes and standards. The riser shall be installed in accordance with the applicable codes and standards. The riser shall be installed in accordance with the applicable codes and standards.
- INSTALLATION. Riser shall be installed in accordance with the applicable codes and standards. The riser shall be installed in accordance with the applicable codes and standards. The riser shall be installed in accordance with the applicable codes and standards.
- CONNECTION. Riser shall be installed in accordance with the applicable codes and standards. The riser shall be installed in accordance with the applicable codes and standards. The riser shall be installed in accordance with the applicable codes and standards.
- INSULATION. Riser shall be installed in accordance with the applicable codes and standards. The riser shall be installed in accordance with the applicable codes and standards. The riser shall be installed in accordance with the applicable codes and standards.
- PLUGGING. Riser shall be installed in accordance with the applicable codes and standards. The riser shall be installed in accordance with the applicable codes and standards. The riser shall be installed in accordance with the applicable codes and standards.
- MARKING. Riser shall be installed in accordance with the applicable codes and standards. The riser shall be installed in accordance with the applicable codes and standards. The riser shall be installed in accordance with the applicable codes and standards.
- LOCATION MEASURES. Riser shall be installed in accordance with the applicable codes and standards. The riser shall be installed in accordance with the applicable codes and standards. The riser shall be installed in accordance with the applicable codes and standards.
- PAYMENT. Riser shall be installed in accordance with the applicable codes and standards. The riser shall be installed in accordance with the applicable codes and standards. The riser shall be installed in accordance with the applicable codes and standards.

NOTE: RISER PIPE REQUIREMENTS AT MANHOLE CONNECTION SHALL BE SIMILAR TO THOSE SHOWN ABOVE.



NOTE: TABLE FOR REFERENCE ONLY AND SHOULD BE ON EACH APPLICABLE PLAN SHEET.

SANITARY SEWER RISER TABLE				FOR INFORMATION ONLY	
NUMBER	TYPE	LOCATION		DIRECTION	APPROXIMATE LENGTH
		LOT NO.	LINE NO. STATION		
1	4" MANHOLE CONNECTION				
2	6" MANHOLE CONNECTION				
3	4" TEE				
4	6" TEE				

NOTE: MIN. SHEAR CONCRETS TO BE USED WHEN TROSKING TO CLAY PIPE.



NOTE: RISER PIPE REQUIREMENTS AT MANHOLE CONNECTION SHALL BE SIMILAR TO THOSE SHOWN ABOVE.

VERTICAL RISER ASSEMBLY SERVER DETAIL

CITY ENGINEER
GARY JANZEN, P.E.

PROJECT NUMBER: 221170-004
DATE: OCTOBER 2024
DESIGNED BY: KPG
DRAWN BY: B.J.H.
CHECKED BY: T.B.K.

CITY ENGINEERING OFFICE
CITY OF WICHITA
155 SOUTH MAIN STREET
WICHITA, KS 67202
(316) 266-4501

REVISION: JULY 2015

SS-103

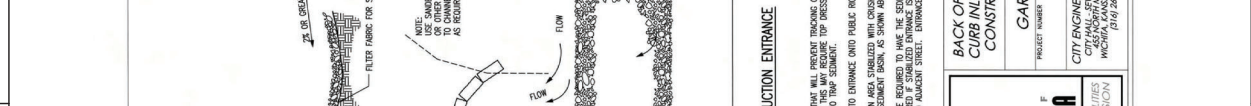


PAUL GUNZELMAN CITY ENGINEER
CITY OF WICHITA PROJECT NO. 468-2024-001191
PINEWAY ADDITION - OFF-SITE
IMPROVEMENTS
TO SERVE
SANITARY SEWER MAIN

JOB NO.	221170-004
DATE	OCTOBER 2024
PM	KPG
DESIGNED BY	KPG
DRAWN BY	B.JH
CHECKED BY	TBK
BMP DETAILS	
CU505	
13-OF-18	

1 2 3 4 5 6

A B C D E

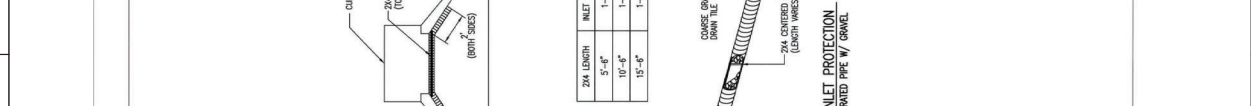


2x4 LENGTH	INLET TYPE	INLET OPENING
5'-6"	1-A	5'-0"
10'-6"	1-A	10'-0"
15'-6"	1-A	15'-0"



GENERAL NOTES

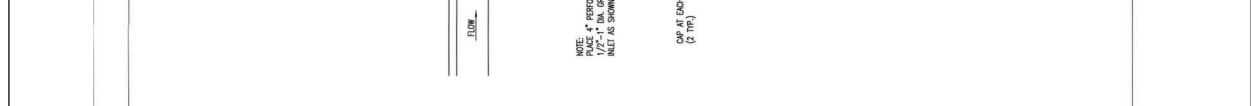
- EXCURSION MAT TO BE INSTALLED WHEN SO2 IS NOT SPECIFIED ON PROJECT.
- EXCURSION BLANKET TO BE INSTALLED OVER SEED AND FERTILIZER, AS SPECIFIED IN THE PROJECT SPECIFICATIONS.
- AFTER INSTALLATION OF EXCURSION BLANKET, AT LOCATIONS WHERE THE GUTTER, SUPERSEPARATOR, EROSION CONTROL DEVICES WILL BE INSTALLED BY THE CONTRACTOR AS NEEDED TO FIX THE PROBLEM.



BACK OF CURB PROTECTION DETAIL

12" SPACING

6" SEAM OVERLAP (N.A.T.Y. - RECOMMENDED BY MANUFACTURER)



GENERAL NOTES

- THE ENTRANCE SHALL BE MAINTAINED IN A CONDITION THAT WILL PREVENT TRACKING OR SPREADING OF MATERIALS ONTO ADJACENT STREETS, DRIVEWAYS, OR SIDEWALKS. REPAIR AND/OR CLEANUP OF ANY MATERIALS USED TO TRAP SEDIMENT SHALL BE THE RESPONSIBILITY OF THE CONTRACTOR.
- WHEN NECESSARY, WHEELS SHALL BE CLEANED PRIOR TO ENTRANCE ONTO PUBLIC ROAD-OF-WAY.
- WHEN WASHING IS REQUIRED, IT SHALL BE DONE ON A DIRT COURSE WITH CHIPPED CONCRETE THAT DRAINS INTO AN APPROVED SEDIMENT TRAP OR SEDIMENT BASIN, AS SHOWN ABOVE.
- DRIVE ENTRANCES ONTO RESIDENTIAL LOTS WILL NOT BE REQUIRED TO HAVE THE SEDIMENT BARRIER SHOWN, BUT WHEEL WASHING MAY BE REQUIRED IF STABILIZED ENTRANCE IS NOT USED. WHEEL WASHING SHALL BE PROVIDED ONTO ADJACENT STREET. ENTRANCE SHALL EXTEND FROM BACK OF CURB TO DRILLING.



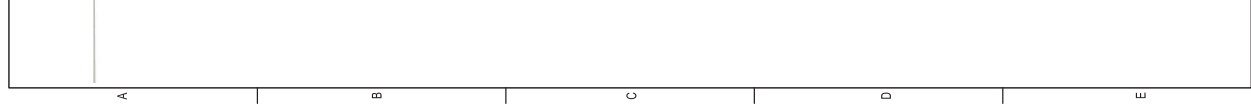
GENERAL NOTES

- THE ENTRANCE SHALL BE MAINTAINED IN A CONDITION THAT WILL PREVENT TRACKING OR SPREADING OF MATERIALS ONTO ADJACENT STREETS, DRIVEWAYS, OR SIDEWALKS. REPAIR AND/OR CLEANUP OF ANY MATERIALS USED TO TRAP SEDIMENT SHALL BE THE RESPONSIBILITY OF THE CONTRACTOR.
- WHEN NECESSARY, WHEELS SHALL BE CLEANED PRIOR TO ENTRANCE ONTO PUBLIC ROAD-OF-WAY.
- WHEN WASHING IS REQUIRED, IT SHALL BE DONE ON A DIRT COURSE WITH CHIPPED CONCRETE THAT DRAINS INTO AN APPROVED SEDIMENT TRAP OR SEDIMENT BASIN, AS SHOWN ABOVE.
- DRIVE ENTRANCES ONTO RESIDENTIAL LOTS WILL NOT BE REQUIRED TO HAVE THE SEDIMENT BARRIER SHOWN, BUT WHEEL WASHING MAY BE REQUIRED IF STABILIZED ENTRANCE IS NOT USED. WHEEL WASHING SHALL BE PROVIDED ONTO ADJACENT STREET. ENTRANCE SHALL EXTEND FROM BACK OF CURB TO DRILLING.



GENERAL NOTES

- THE ENTRANCE SHALL BE MAINTAINED IN A CONDITION THAT WILL PREVENT TRACKING OR SPREADING OF MATERIALS ONTO ADJACENT STREETS, DRIVEWAYS, OR SIDEWALKS. REPAIR AND/OR CLEANUP OF ANY MATERIALS USED TO TRAP SEDIMENT SHALL BE THE RESPONSIBILITY OF THE CONTRACTOR.
- WHEN NECESSARY, WHEELS SHALL BE CLEANED PRIOR TO ENTRANCE ONTO PUBLIC ROAD-OF-WAY.
- WHEN WASHING IS REQUIRED, IT SHALL BE DONE ON A DIRT COURSE WITH CHIPPED CONCRETE THAT DRAINS INTO AN APPROVED SEDIMENT TRAP OR SEDIMENT BASIN, AS SHOWN ABOVE.
- DRIVE ENTRANCES ONTO RESIDENTIAL LOTS WILL NOT BE REQUIRED TO HAVE THE SEDIMENT BARRIER SHOWN, BUT WHEEL WASHING MAY BE REQUIRED IF STABILIZED ENTRANCE IS NOT USED. WHEEL WASHING SHALL BE PROVIDED ONTO ADJACENT STREET. ENTRANCE SHALL EXTEND FROM BACK OF CURB TO DRILLING.



GENERAL NOTES

- THE ENTRANCE SHALL BE MAINTAINED IN A CONDITION THAT WILL PREVENT TRACKING OR SPREADING OF MATERIALS ONTO ADJACENT STREETS, DRIVEWAYS, OR SIDEWALKS. REPAIR AND/OR CLEANUP OF ANY MATERIALS USED TO TRAP SEDIMENT SHALL BE THE RESPONSIBILITY OF THE CONTRACTOR.
- WHEN NECESSARY, WHEELS SHALL BE CLEANED PRIOR TO ENTRANCE ONTO PUBLIC ROAD-OF-WAY.
- WHEN WASHING IS REQUIRED, IT SHALL BE DONE ON A DIRT COURSE WITH CHIPPED CONCRETE THAT DRAINS INTO AN APPROVED SEDIMENT TRAP OR SEDIMENT BASIN, AS SHOWN ABOVE.
- DRIVE ENTRANCES ONTO RESIDENTIAL LOTS WILL NOT BE REQUIRED TO HAVE THE SEDIMENT BARRIER SHOWN, BUT WHEEL WASHING MAY BE REQUIRED IF STABILIZED ENTRANCE IS NOT USED. WHEEL WASHING SHALL BE PROVIDED ONTO ADJACENT STREET. ENTRANCE SHALL EXTEND FROM BACK OF CURB TO DRILLING.

REVISION DATE: MAY 2013

BACK OF CURB PROTECTION, CURB INLET PROTECTION AND CONSTRUCTION ENTRANCE

CITY ENGINEER: GARY JANZEN, P.E.

PROJECT NUMBER: 221170-004

CITY ENGINEER'S OFFICE: CITY OF WICHITA, KANSAS

DESIGNED BY: KPG

DRAWN BY: B.JH

CHECKED BY: TBK

REVISION DATE: MAY 2013

BACK OF CURB PROTECTION, CURB INLET PROTECTION AND CONSTRUCTION ENTRANCE

CITY ENGINEER: GARY JANZEN, P.E.

PROJECT NUMBER: 221170-004

CITY ENGINEER'S OFFICE: CITY OF WICHITA, KANSAS

DESIGNED BY: KPG

DRAWN BY: B.JH

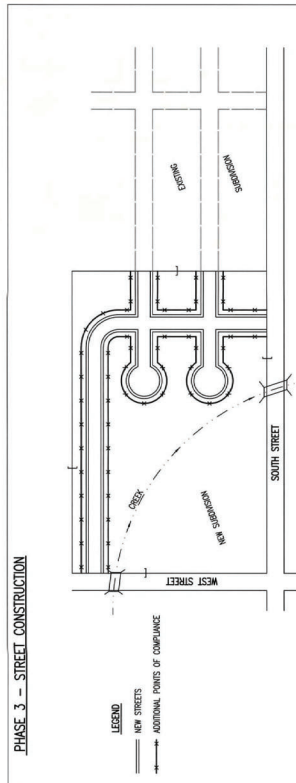
CHECKED BY: TBK



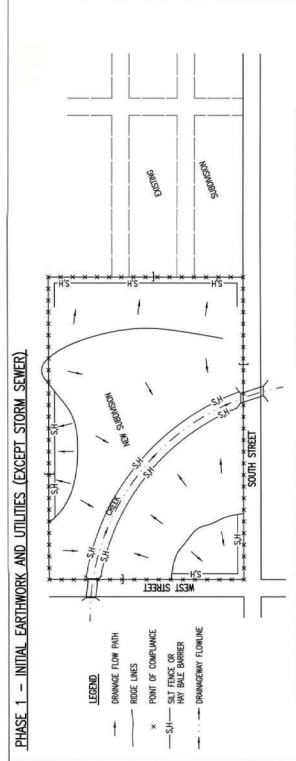
PAUL GUNZELMAN CITY ENGINEER
CITY OF WICHITA PROJECT NO. 468-2024-001191
IMPROVEMENTS TO SERVE
PINEWAY ADDITION - OFF-SITE
SANITARY SEWER MAIN

ISSUE	
DATE	
DESIGNED BY	KPG
DRAWN BY	B.J.H.
CHECKED BY	TBK
BMP DETAILS	
CU509	
17 OF 18	

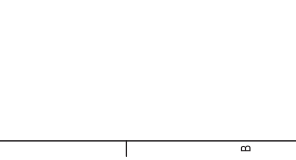
1 2 3 4 5 6



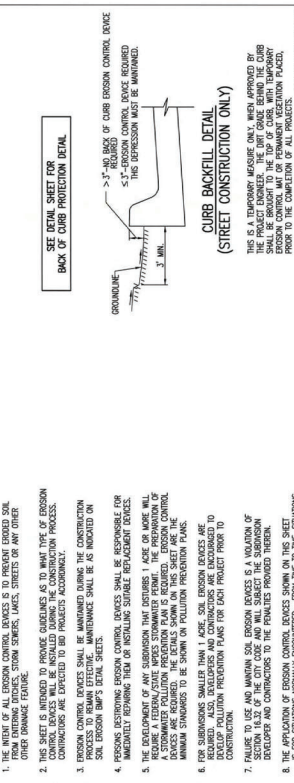
- DURING THIS PHASE OF SUBDIVISION CONSTRUCTION, NEW STREETS ARE INSTALLED. ALL EROSION CONTROL DEVICES INSTALLED DURING PHASE 1 AND 2 MUST STILL BE MAINTAINED THROUGHOUT THIS PHASE. THE POINTS OF COMPLIANCE MUST REMAIN IN PLACE THROUGHOUT THE CONSTRUCTION PROCESS.
- CURB OPENING INLET PROTECTION:
 - ALL CURB OPENING INLET PROTECTION SHALL BE PROVIDED WHEN STREET SURFACING IS COMPLETED.
 - NON-SHADE LOCATIONS - PROVIDE INLET PROTECTION AS SOON AS BASE COURSE IS PLACED TO PREVENT EROSION OF THE SURFACE COURSE.
 - SHADE LOCATIONS - PROVIDE INLET PROTECTION AS SOON AS BASE COURSE IS PLACED TO PREVENT EROSION OF THE SURFACE COURSE.
- PROTECT ALL EXISTING AND NEW EROSION CONTROL DEVICES FROM DAMAGE DURING CONSTRUCTION. THE DEVELOPER SHALL BE RESPONSIBLE FOR MAINTAINING THE DEVICES UNTIL COMPLETION OF THE PROJECT. AT WHICH TIME THE DEVELOPER WILL BE RESPONSIBLE FOR MAINTAINING THE DEVICES UNTIL COMPLETION OF THE PROJECT. THE DEVELOPER SHALL BE RESPONSIBLE FOR MAINTAINING AND MAINTAINING THESE DEVICES.
- WITHIN 14 DAYS OF COMPLETION OF EARTHWORK ACTIVITIES IN ANY OPEN AREA, THAT AREA SHALL BE TEMPORARILY OR PERMANENTLY SEEDING AND MULCHED.



- CONTRACTORS WORKING WITHIN THE SITE WILL NOT BE REQUIRED TO USE EROSION CONTROL DEVICES OR ANY OTHER EROSION CONTROL MEASURES ON THE BOUNDARY LINE STREETS OR ON ADJACENT PROPERTIES TO EXISTING UTILITIES ARE EXPECTED TO USE EROSION CONTROL DEVICES AT THEIR WORK LOCATIONS, AS NECESSARY.
- CONTRACTORS SHALL MAINTAIN ALL EXISTING EROSION CONTROL DEVICES AND MAINTAINING THESE DEVICES.
- IF THE INITIAL EARTHWORK AND UTILITIES ARE DONE AS PART OF A PUBLIC IMPROVEMENT PROJECT, THESE EROSION CONTROL DEVICES WILL BE INSTALLED BY THE CONTRACTOR AS PART OF THE PROJECT. THE DEVELOPER SHALL BE RESPONSIBLE FOR MAINTAINING THE DEVICES UNTIL COMPLETION OF THE PROJECT. AT WHICH TIME THE DEVELOPER WILL BE RESPONSIBLE FOR MAINTAINING THE DEVICES UNTIL COMPLETION OF THE PROJECT. THE DEVELOPER SHALL BE RESPONSIBLE FOR MAINTAINING AND MAINTAINING THESE DEVICES.
- WITHIN 14 DAYS OF COMPLETION OF EARTHWORK ACTIVITIES IN ANY OPEN AREA, THAT AREA SHALL BE TEMPORARILY OR PERMANENTLY SEEDING AND MULCHED.

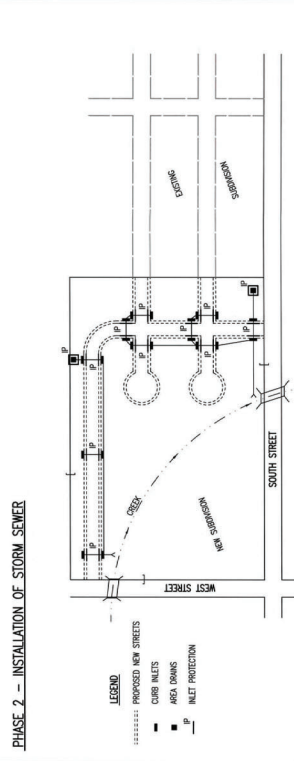


- DURING THIS PHASE OF SUBDIVISION DEVELOPMENT, ALL EROSION CONTROL DEVICES INSTALLED DURING PHASE 1 SHALL REMAIN IN PLACE AND BE MAINTAINED.
- AS NEW STORM SEWERS WITH INLETS ARE INSTALLED, THE STORM SEWERS MUST BE PROTECTED SO ALL NEW INLETS BECOME POINTS OF COMPLIANCE.
- AREA DRAINS - AS SOON AS WATER CAN FLOW INTO THESE DRAINS, SILT FENCE OR SILT BALE BARRIER SHALL BE INSTALLED UPSTREAM OF THEM.
- CURB OPENING INLETS - AS SOON AS WATER CAN FLOW INTO THESE DRAINS, SILT FENCE OR SILT BALE BARRIER SHALL BE INSTALLED UPSTREAM OF THEM.
- THE STORM SEWER CONTRACTOR WILL BE RESPONSIBLE FOR INSTALLING THESE DEVICES.



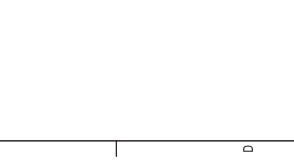
SEE DETAIL SHEET FOR BACK OF CURB PROTECTION DETAIL.

THE INDIVIDUAL LOT OWNERS WILL BE RESPONSIBLE FOR MAINTAINING THE EROSION CONTROL DEVICES THROUGHOUT THE CONSTRUCTION PROCESS. THE STREET CONTRACTOR SHALL BE RESPONSIBLE FOR MAINTAINING THE DEVICES UNTIL COMPLETION OF THE PROJECT. AT WHICH TIME THE DEVELOPER WILL BE RESPONSIBLE FOR MAINTAINING THE DEVICES UNTIL COMPLETION OF THE PROJECT. THE DEVELOPER SHALL BE RESPONSIBLE FOR MAINTAINING AND MAINTAINING THESE DEVICES.



SEE DETAIL SHEET FOR BACK OF CURB PROTECTION DETAIL.

THE INDIVIDUAL LOT OWNERS WILL BE RESPONSIBLE FOR MAINTAINING THE EROSION CONTROL DEVICES THROUGHOUT THE CONSTRUCTION PROCESS. THE STREET CONTRACTOR SHALL BE RESPONSIBLE FOR MAINTAINING THE DEVICES UNTIL COMPLETION OF THE PROJECT. AT WHICH TIME THE DEVELOPER WILL BE RESPONSIBLE FOR MAINTAINING THE DEVICES UNTIL COMPLETION OF THE PROJECT. THE DEVELOPER SHALL BE RESPONSIBLE FOR MAINTAINING AND MAINTAINING THESE DEVICES.



SEE DETAIL SHEET FOR BACK OF CURB PROTECTION DETAIL.

THE INDIVIDUAL LOT OWNERS WILL BE RESPONSIBLE FOR MAINTAINING THE EROSION CONTROL DEVICES THROUGHOUT THE CONSTRUCTION PROCESS. THE STREET CONTRACTOR SHALL BE RESPONSIBLE FOR MAINTAINING THE DEVICES UNTIL COMPLETION OF THE PROJECT. AT WHICH TIME THE DEVELOPER WILL BE RESPONSIBLE FOR MAINTAINING THE DEVICES UNTIL COMPLETION OF THE PROJECT. THE DEVELOPER SHALL BE RESPONSIBLE FOR MAINTAINING AND MAINTAINING THESE DEVICES.

CITY OF WICHITA
PUBLIC WORKS & UTILITIES
ENGINEERING DIVISION

GARY JANZEN, P.E.
CITY ENGINEER

PROJECT NUMBER: 468-2024-001191
JOB NUMBER: 221170-004
DATE: OCTOBER 2024
PM: KPG
DESIGNED BY: KPG
DRAWN BY: B.J.H.
CHECKED BY: TBK

DATE: 10/10/2024

BY: GARY JANZEN, P.E.

PROJECT NUMBER: 468-2024-001191

JOB NUMBER: 221170-004

DATE: OCTOBER 2024

PM: KPG

DESIGNED BY: KPG

DRAWN BY: B.J.H.

CHECKED BY: TBK

CITY OF WICHITA
PUBLIC WORKS & UTILITIES
ENGINEERING DIVISION

GARY JANZEN, P.E.
CITY ENGINEER

PROJECT NUMBER: 468-2024-001191
JOB NUMBER: 221170-004
DATE: OCTOBER 2024
PM: KPG
DESIGNED BY: KPG
DRAWN BY: B.J.H.
CHECKED BY: TBK

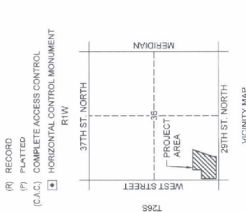
PINEWAY ADDITION

CITY OF WICHITA, SEDGWICK COUNTY, KANSAS

FINAL PLAT



- LEGEND**
- ▲ FOUND CORNER AS NOTED
 - FOUND MONUMENT AS NOTED
 - SET 1/2 IRON WITH ARMSTRONG CAP
 - SET AS NOTED
 - (M) MEASURED
 - (R) RECORDED
 - (C.A.C.) COMPLETE ACCESS CONTROL
 - HORIZONTAL CONTROL MONUMENT



ALL MONUMENTS, SURVEY DATA AND NOTES ARE DERIVED FROM SURVEY DATA PROVIDED BY THE SURVEYOR. THE SURVEYOR'S LIABILITY IS LIMITED TO THE CONVEYANCE OF THE SURVEY DATA TO THE CONVEYANCE MODEL. UNLESS OTHERWISE SPECIFIED, ALL DIMENSIONS ARE IN FEET AND DECIMALS THEREOF. THE SURVEYOR HAS CONDUCTED A VISUAL INSPECTION OF THE SURVEY DATA AND HAS FOUND IT TO BE ACCURATE AND COMPLETE. THE SURVEYOR HAS CONDUCTED A VISUAL INSPECTION OF THE SURVEY DATA AND HAS FOUND IT TO BE ACCURATE AND COMPLETE. THE SURVEYOR HAS CONDUCTED A VISUAL INSPECTION OF THE SURVEY DATA AND HAS FOUND IT TO BE ACCURATE AND COMPLETE.

PROPERTY RECORDS

SECTION 16, T23S, R10E, S4

RECORD 1 TO LOT A

RECORD 1 TO LOT C

RECORD 1 TO LOT D

RECORD 1 TO LOT E

RECORD 1 TO LOT F

RECORD 1 TO LOT G

RECORD 1 TO LOT H

RECORD 1 TO LOT I

RECORD 1 TO LOT J

RECORD 1 TO LOT K

RECORD 1 TO LOT L

RECORD 1 TO LOT M

RECORD 1 TO LOT N

RECORD 1 TO LOT O

RECORD 1 TO LOT P

RECORD 1 TO LOT Q

RECORD 1 TO LOT R

RECORD 1 TO LOT S

RECORD 1 TO LOT T

RECORD 1 TO LOT U

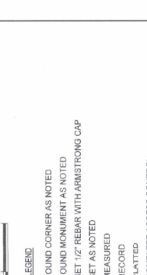
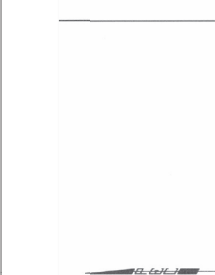
RECORD 1 TO LOT V

RECORD 1 TO LOT W

RECORD 1 TO LOT X

RECORD 1 TO LOT Y

RECORD 1 TO LOT Z



SANITARY SEWER MAIN IMPROVEMENTS TO SERVE PINEWAY ADDITION - OFF-SITE

PAUL GUNZELMAN CITY ENGINEER
CITY OF WICHITA PROJECT NO. 468-2024-001191

JOB NO.	221170-004
DATE	OCTOBER 2024
PM	KPG
DESIGNED BY	KPG
DRAWN BY	BJH
CHECKED BY	TBK

COPY OF PLAT
CU510
18" OF 18

PEC
PROFESSIONAL ENGINEERING CONSULTANTS
WICHITA, KS 67202
316.262.2881 www.pec.com

PAGE 1 OF 2

PC 318-88

FOR INFORMATION ONLY